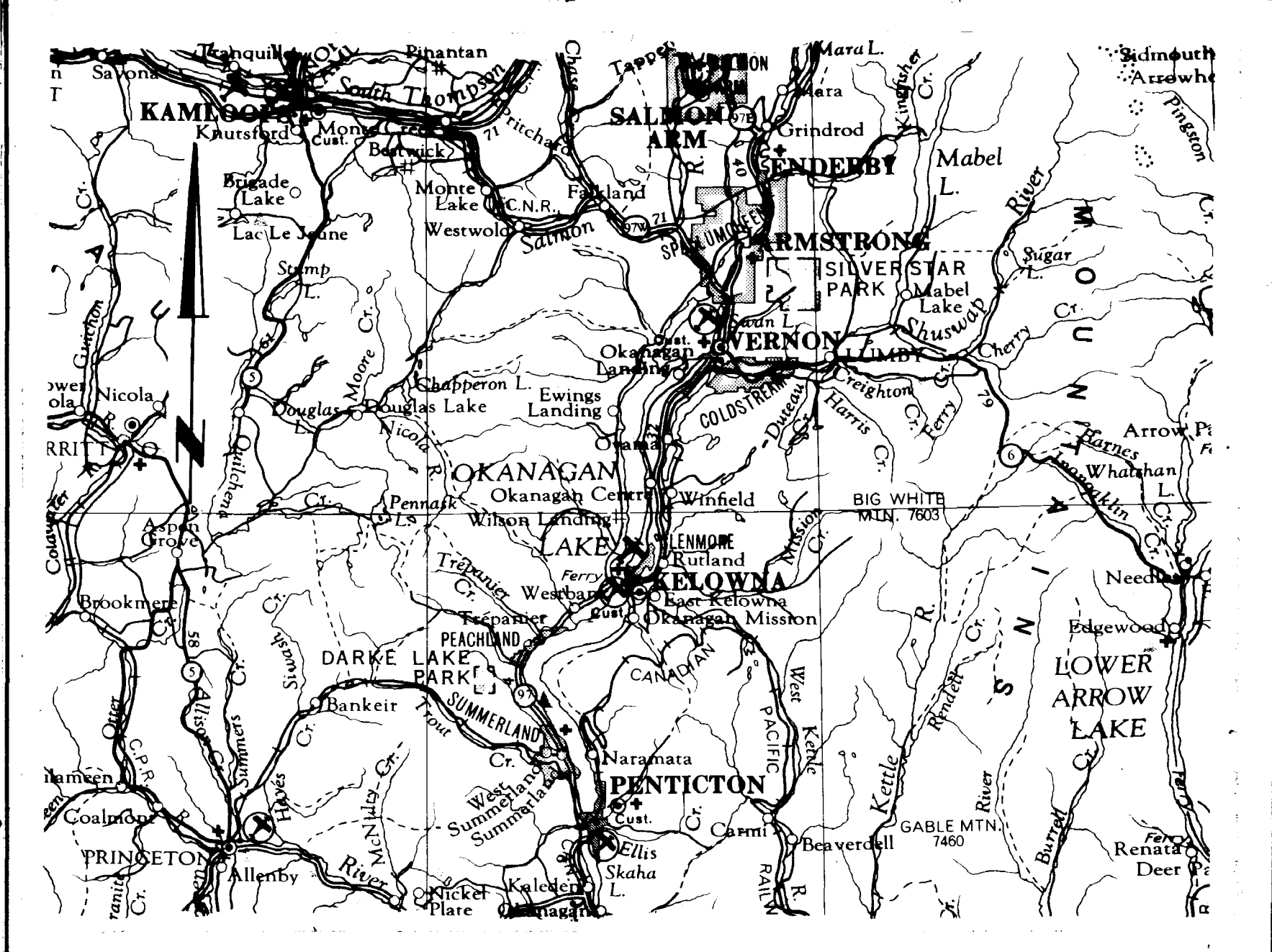
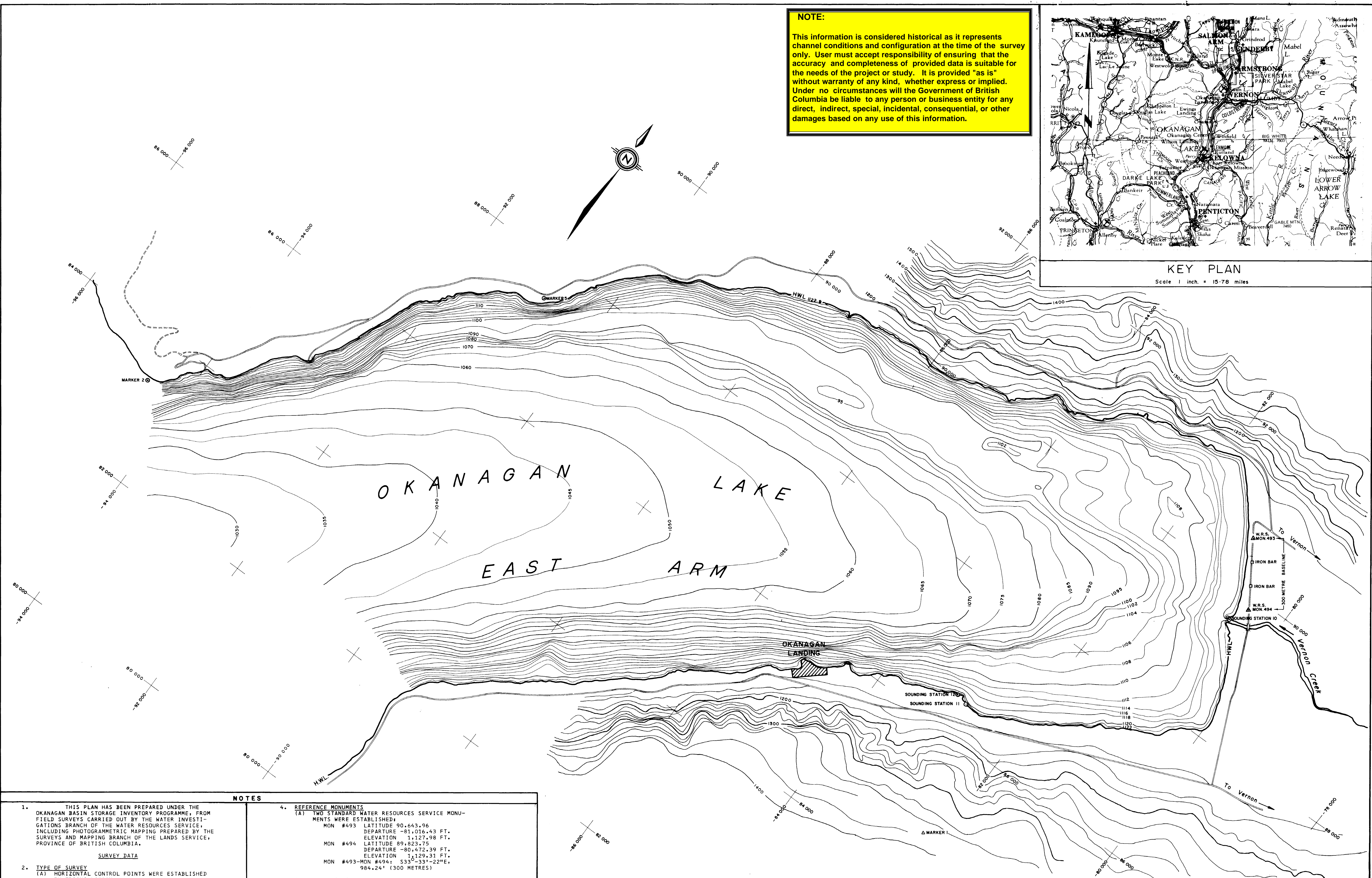


**NOTE:**  
 This information is considered historical as it represents channel conditions and configuration at the time of the survey only. User must accept responsibility of ensuring that the accuracy and completeness of provided data is suitable for the needs of the project or study. It is provided "as is" without warranty of any kind, whether express or implied. Under no circumstances will the Government of British Columbia be liable to any person or business entity for any direct, indirect, special, incidental, consequential, or other damages based on any use of this information.



**KEY PLAN**  
 Scale 1 inch = 15.78 miles



**NOTES**

- THIS PLAN HAS BEEN PREPARED UNDER THE OKANAGAN BASIN STORAGE INVENTORY PROGRAMME, FROM FIELD SURVEYS CARRIED OUT BY THE WATER INVESTIGATIONS BRANCH OF THE WATER RESOURCES SERVICE, INCLUDING PHOTOGRAMMETRIC MAPPING PREPARED BY THE SURVEYS AND MAPPING BRANCH OF THE LANDS SERVICE, PROVINCE OF BRITISH COLUMBIA.  
SURVEY DATA
- TYPE OF SURVEY**  
 (A) HORIZONTAL CONTROL POINTS WERE ESTABLISHED BY TRIANGULATION.  
 (B) BATHYMETRIC DETAIL WAS OBTAINED BY USING A RAYTHEON RECORDING FATHOMETER, MODEL DE 719.  
 (C) SURVEYS WERE CARRIED OUT DURING THE MONTH OF JULY, 1972.
- DATUM**  
 (A) ELEVATIONS ARE REFERRED TO GEODETIC DATUM AND ARE BASED ON G.S.C. MONUMENT 257-J-3, ELEV. 1165.911 (155).  
 (B) HORIZONTAL CONTROL IS BASED ON THE BALANCED POSITION OF STATION SNARF ESTABLISHED BY THE SURVEY AND MAPPING BRANCH, AND STATION O'KEEFE - MONUMENT 149 ESTABLISHED BY THE WATER INVESTIGATIONS BRANCH IN 1963.  
 (C) CO-ORDINATES ARE POLYCONIC RECTANGULAR AND REFERRED TO LAT. 50° AND LONG. 119°  
 (D) BEARINGS ARE REFERRED TO 119°
- REFERENCE MONUMENTS**  
 (A) TWO STANDARD WATER RESOURCES SERVICE MONUMENTS WERE ESTABLISHED:  
 MON #493 LATITUDE 90.643.96  
 DEPARTURE -81,016.43 FT.  
 ELEVATION 1,127.98 FT.  
 MON #494 LATITUDE 89.823.75  
 DEPARTURE -80,472.39 FT.  
 ELEVATION 1,129.31 FT.  
 MON #493-MON #494: S33°-33'-22"E,  
 984.24' (300 METRES)
- AIR PHOTOGRAPHS**  
 B. C. 5499: NOS. 210-212 (INCL.), EXPOSED AUGUST 25, 1972, SURVEYS AND MAPPING BRANCH, LANDS SERVICE.
- FIELD BOOKS**  
 FIELD DATA ARE RECORDED IN W.R.S. FIELD BOOKS, NUMBERED 2007A-2007E
- MISCELLANEOUS**  
 (A) WATER LEVEL DATE OF PHOTOGRAPHY AUGUST 25, 1972, ELEVATION 1122.9'  
 (B) CONTROLLED HIGHWATER LEVEL 1123.79 FT.

LEGEND	STORAGE LICENCES				REFERENCES		REVISIONS		
	LICENCE	PRIORITY DATE	AUTHORIZED ACRE - FEET	DEVELOPED ACRE - FEET	DWG NO.	DESCRIPTION	NO.	DESCRIPTION	DATE
▲ WATER RESOURCES MONUMENT									
● BENCH MARK									
○ SOUNDING STATION									
— ROAD									
- - - TRAIL									
~ CREEK									
~ CREEK INTERMITTENT									
~ CREEK INDEFINITE									
100'-CONTOURS & ELEVATIONS									

SURVEYED: B. SCHUBERT DATE: AUG. 1972	BRITISH COLUMBIA DEPARTMENT OF LANDS, FORESTS, AND WATER RESOURCES WATER RESOURCES SERVICE <b>WATER INVESTIGATIONS BRANCH</b> STORAGE INVENTORY PROGRAMME OKANAGAN BASIN - COLUMBIA SYSTEM <b>OKANAGAN LAKE</b> <b>BATHYMETRIC PLAN OF EAST ARM</b>	FILE NO. INVENTORY: 0305080-1
DRAWN: G.R. TRACED: G.R. CHECKED: J. [Signature] DATE: JUNE, 1974		SCALE: 1 inch = 500 feet
	DWG. NO. <b>4567-76C</b>	SHEET 3 of 4