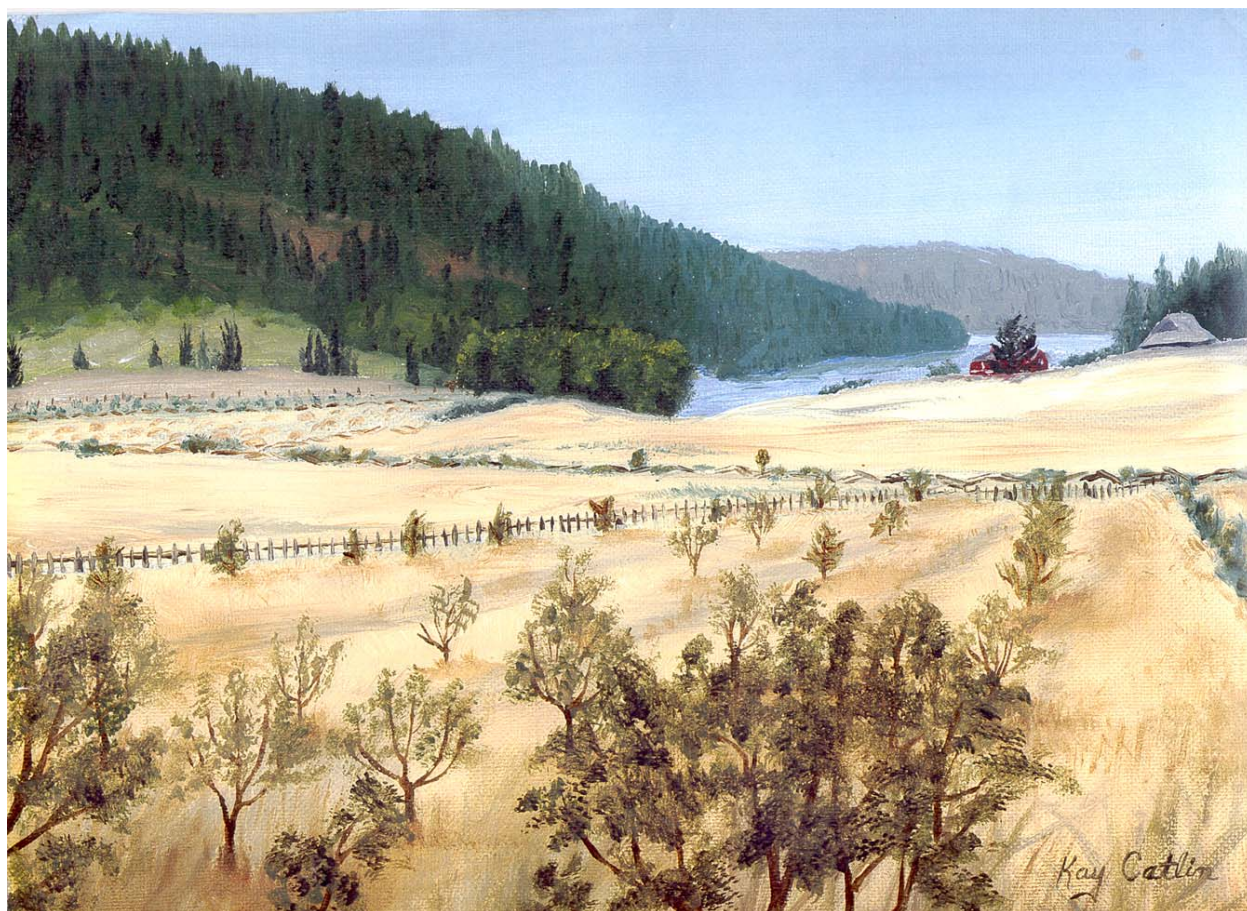


Background Report for Burgoyne Bay Protected Area on Salt Spring Island

Colour Atlas



Prepared for:
Environmental Stewardship Division
Ministry of Water, Land & Air Protection
PO Box 9338 Stn Prov Govt
Victoria, BC V8W 9M1

Prepared by:
Friends of Saltspring Parks Society
960 Rainbow Road
Salt Spring Island, BC V8K 2M9

March 2003

List of Figures

Burgoyne Bay Background Report

- Figure 2. Burgoyne Valley geological cross-section.
- Figure 3. Burgoyne Valley geological planimetric view.
- Figure 4. Soils mapped by parent soil material for Burgoyne Bay Protected Area.
- Figure 5. Hydrology of Burgoyne Bay area.
- Figure 6. Vegetation cover of Burgoyne Bay Protected Area.
- Figure 7. Physical shorezone units for Burgoyne Bay.
- Figure 8. Oil spill countermeasures for Physical Shorezone Units in Burgoyne Bay.
- Figure 9. Archaeological sites - Burgoyne Bay Protected Area.
- Figure 12. Burgoyne Bay Protected Area roads, trails and routes.
- Figure 13. Islands Trust land designation in and around Burgoyne Bay Protected Area.
- Figure 14. Islands Trust Development Permit Areas in and around Burgoyne Bay Protected Area.

All other figures are in the text of the report.

Cover Illustration

Burgoyne Bay from the Maxwell home; a painting by Fulford Harbour resident Kay Catlin from a historic photo taken c. 1920 - 1940. Courtesy of Barbara Lyngard.

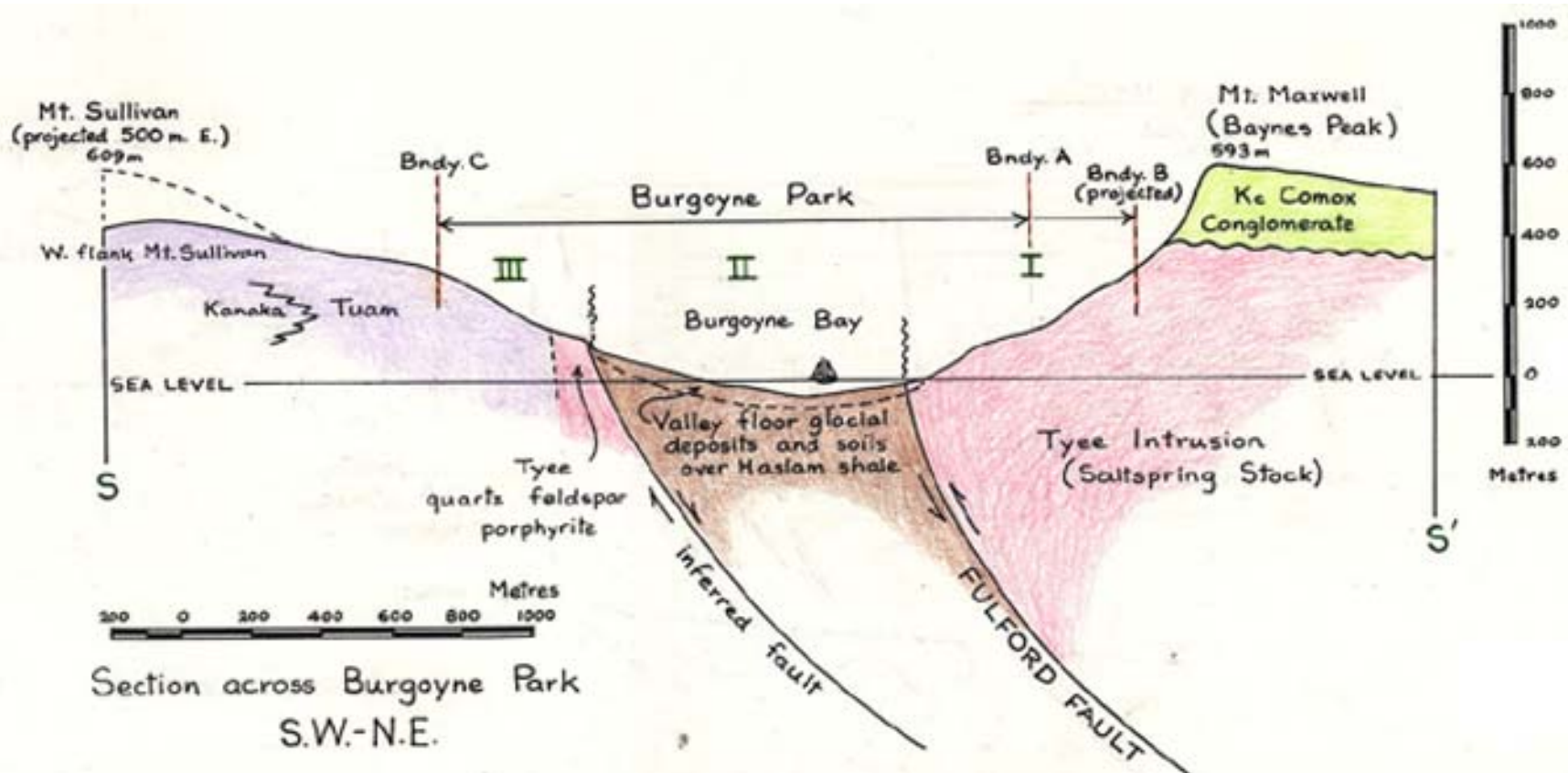


Figure 2: Burgoyne Valley geological cross-section.

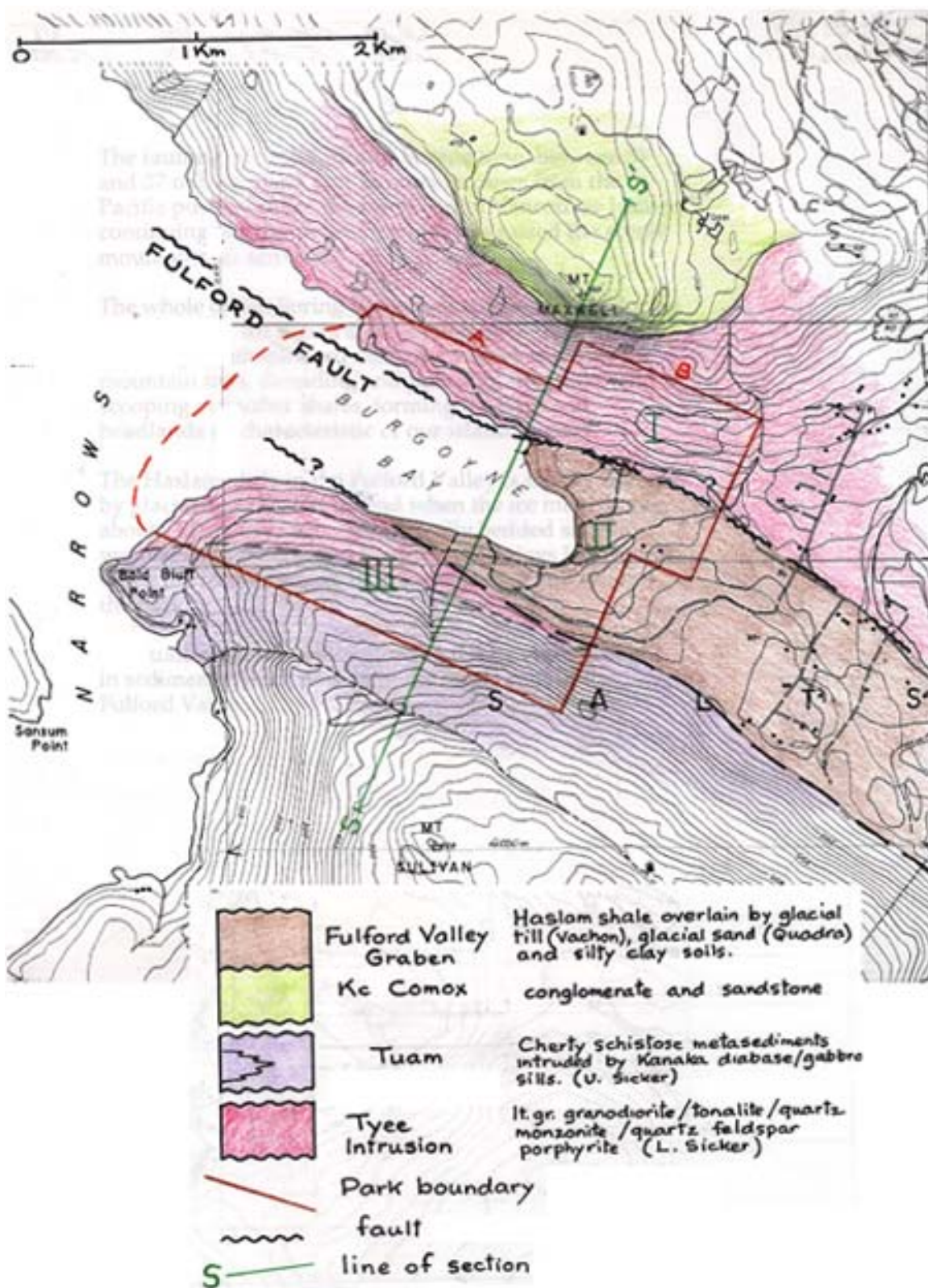


Figure 3: Burgoyne Valley geological planimetric view.

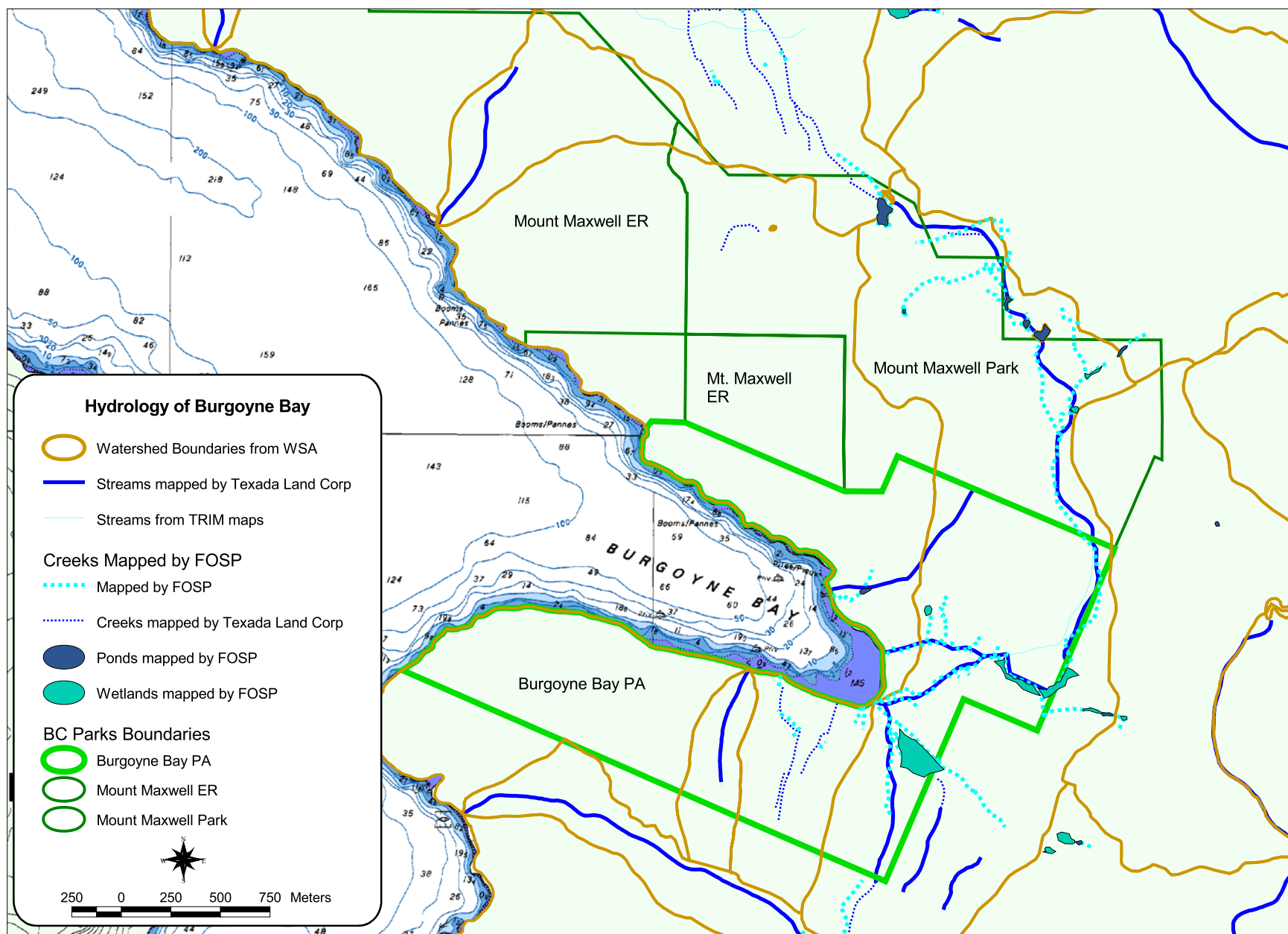


Figure 5: Hydrology of Burgoyne Bay area.

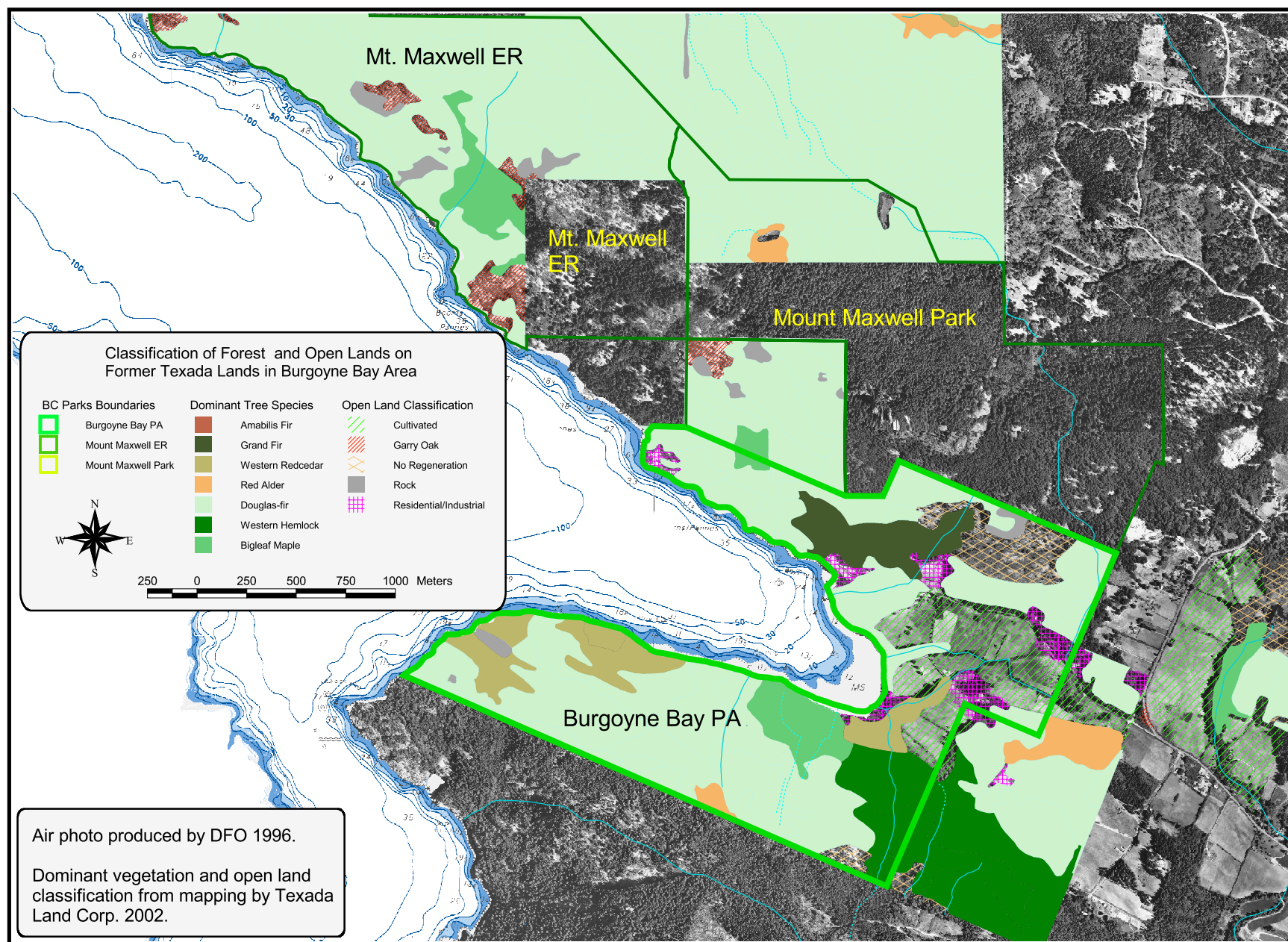


Figure 6: Vegetation cover of Burgoyne Bay Protected Area.

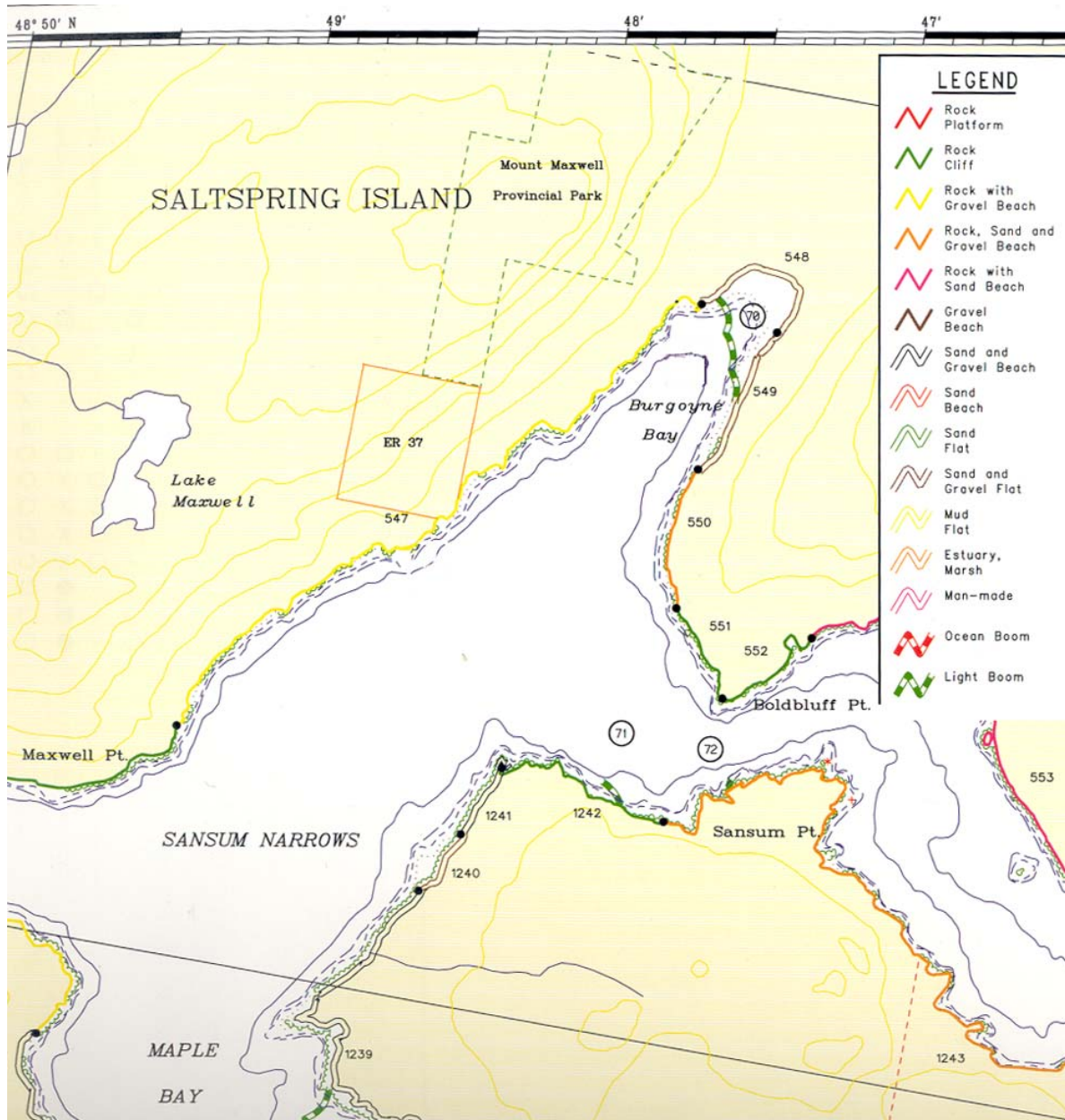


Figure 7: Physical shorezone units for Burgoyne Bay.

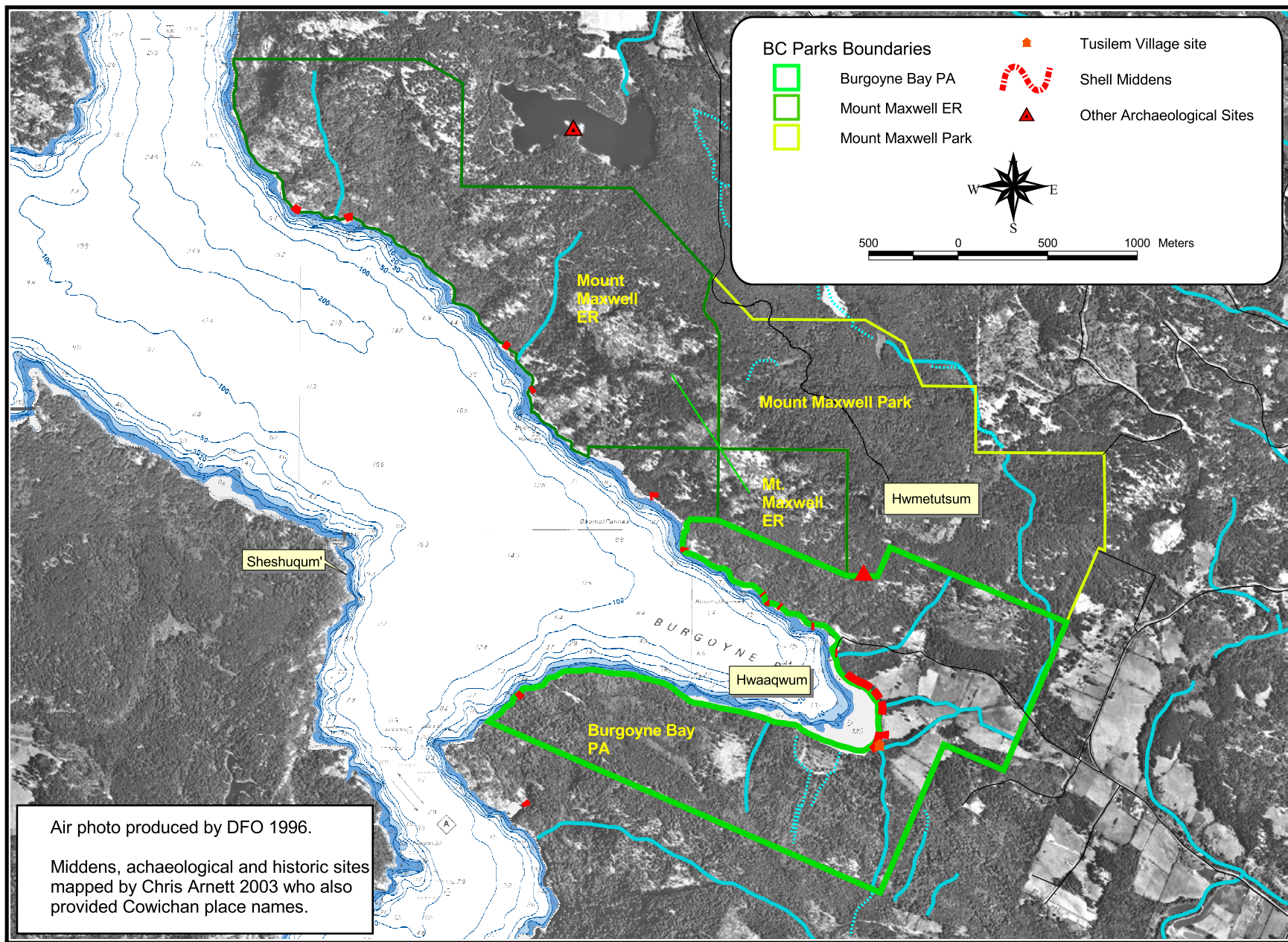


Figure 9: Archaeological sites - Burgoyne Bay Protected Area.

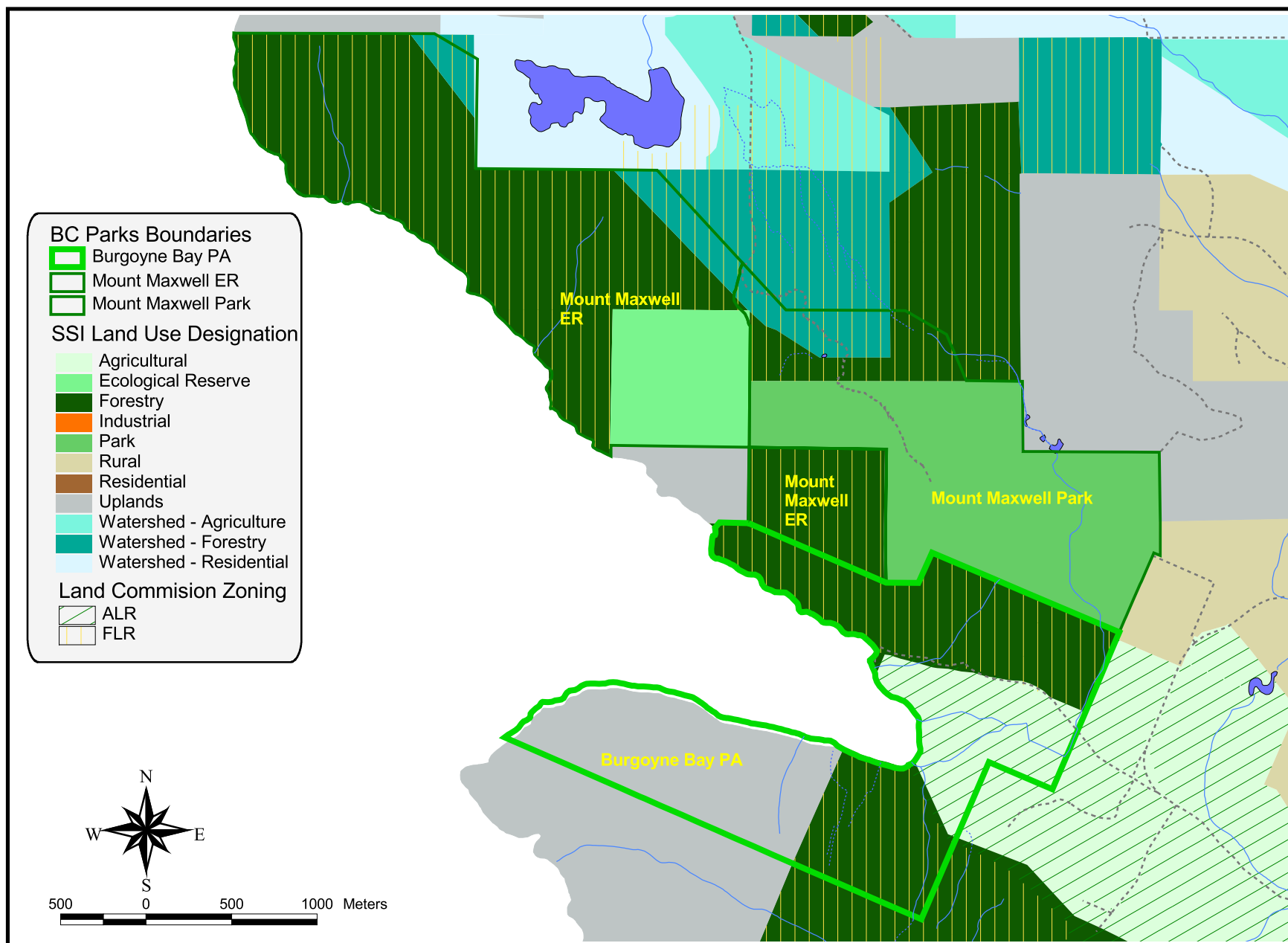


Figure 13: Islands Trust land designation in and around Burgoyne Bay Protected Area.

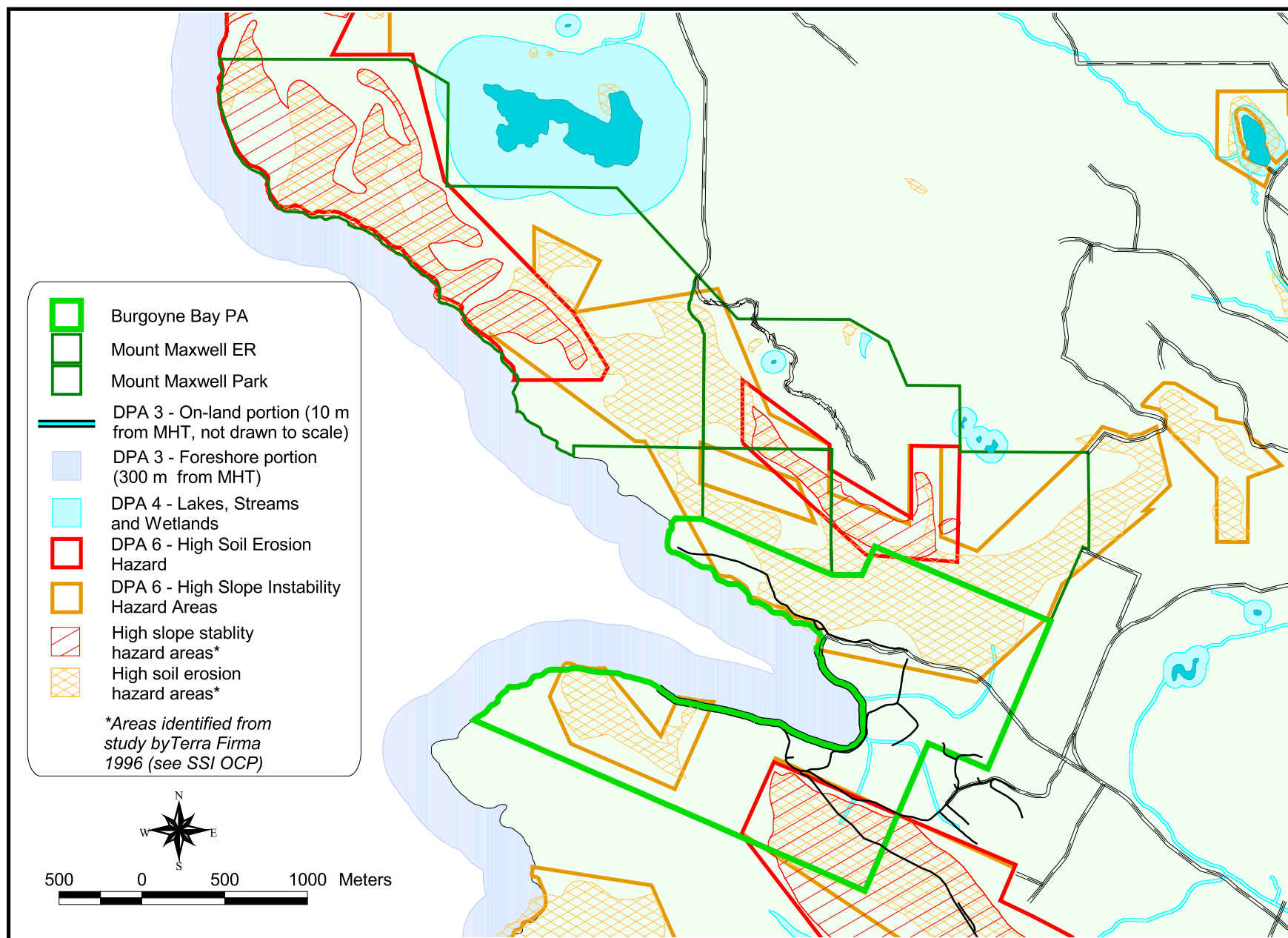


Figure 14: Islands Trust Development Permit Areas (DPAs) in and around Burgoyne Bay Protected Area.