

# Sensitive Ecosystem Inventory

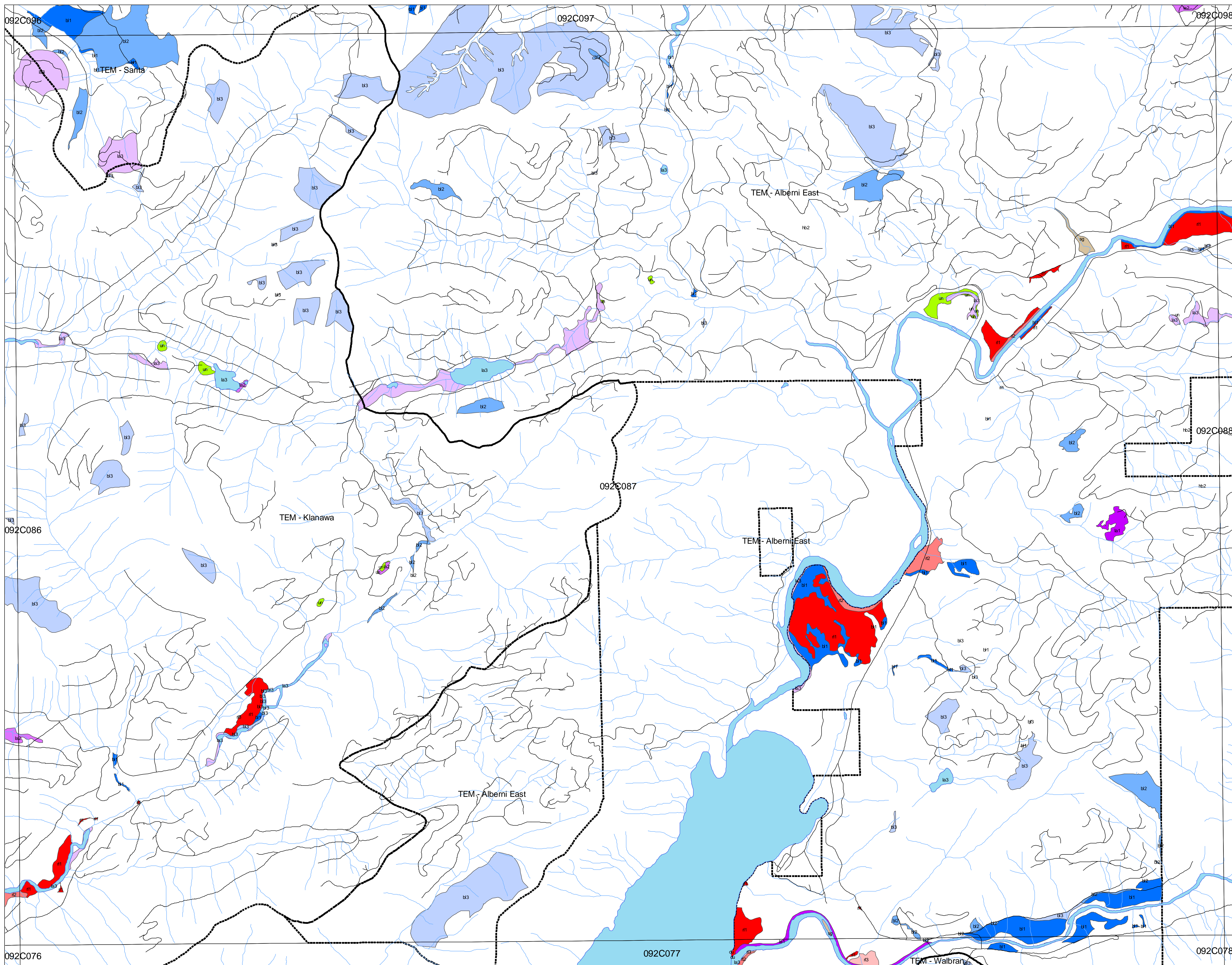
## West Island Timberlands

### Legend

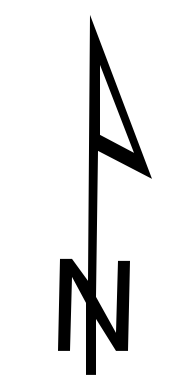
- SEI Classification**
- Red List - > 70% Area
  - Red List - 30% - 70% Area
  - Red List - < 30% Area
  - Blue List - > 70% Area
  - Blue List - 30% - 70% Area
  - Blue List - < 30% Area
  - Landscape Rarity - 0 - 10 ha
  - Landscape Rarity - 10 - 50 ha
  - Landscape Rarity - 50 - 210 ha
  - Cliffs
  - Sparsely Vegetated
  - Wetland
  - Riparian
  - Woodland

### Other Features

- Roads
- Streams
- TEM Project Boundary
- Water
- 1:20000 Mapsheet




Plot Date: March 30, 2004



1:20,000

<b>Cliffs</b>	CL	Steep slopes, often with exposed bedrock. Most have shallow soils and bedrock outcrops.	<b>Sparsely Vegetated / Herbaceous</b>	SV/HB	Non-forested ecosystems with <10% tree cover. Most have shallow soils and bedrock outcrops.	<b>Wetland</b>	WN	Areas characterized by daily, seasonal or year-round water at or over the surface.	<b>Riparian</b>	RI	Streamside areas along creeks, streams, and larger floodplains.	<b>Woodland</b>	WD	Dry, open stands of woodland, generally with between 10 - 25% tree cover.	<b>Rare Communities</b>	RC	Rare plant communities or site series of rare occurrence within the DFA.	
cc	coastal cliffs		hb*	Herbaceous: a mix of grasses and forbs, as well as mosses and lichens.	bg	Bog	rl	low bench: areas flooded at least once every 2 years for part of the growing season	rl	low bench: areas flooded at least once every 2 years for part of the growing season	mx	Mixed conifer - deciduous	r1	Red-listed, CDC				
ic	inland cliffs		cs	Coastal herbaceous: windswept shorelines and slopes influenced by proximity to the ocean.	fn	Fen	fm	medium bench: areas flooded every 1 - 6 years for short periods; usually deciduous or mixed	fm	medium bench: areas flooded every 1 - 6 years for short periods; usually deciduous or mixed			r2	Blue-listed, CDC				
			sg	Spl: sand and gravel deposits with low to moderate cover of grasses and herbs	sw	Swamp	fh	High bench: areas periodically and briefly inundated by high waters; typically conifer-dominated	sw	Shallow water			r3	Class 1 Landscape rarity within the DFA (TFL44) - less than 10 ha				
			du	Dunes: sand dunes with low cover of grasses and herbs	es	Estuary			ta	Talus slopes				r4	Class 2 Landscape rarity within the DFA (TFL44) - 10 to 50 ha			
			sh	Shrub: shrubs account for more than 20% of the vegetation	un	Undifferentiated wetland			ap	Alpine				r5	Class 3 Landscape rarity within the DFA (TFL44) - 50 to 210 ha			
			ro	Talus slopes														
			ro	Alpine														



**Map Note**  
Inquiries relating to this map should be directed to Weyerhaeuser, West Island Timberlands Planning Group, 3406 3rd Avenue, Port Alberni, B.C. V9Y 4E5

**Disclaimer**  
Although we take great care in the preparation of this information and are confident that it is accurate, we do not give any warranty as to its accuracy or suitability for any purpose that it might be used for. Users assume the risk associated with the accuracy and results of the contents of this document.