

# Sensitive Ecosystem Inventory

## West Island Timberlands

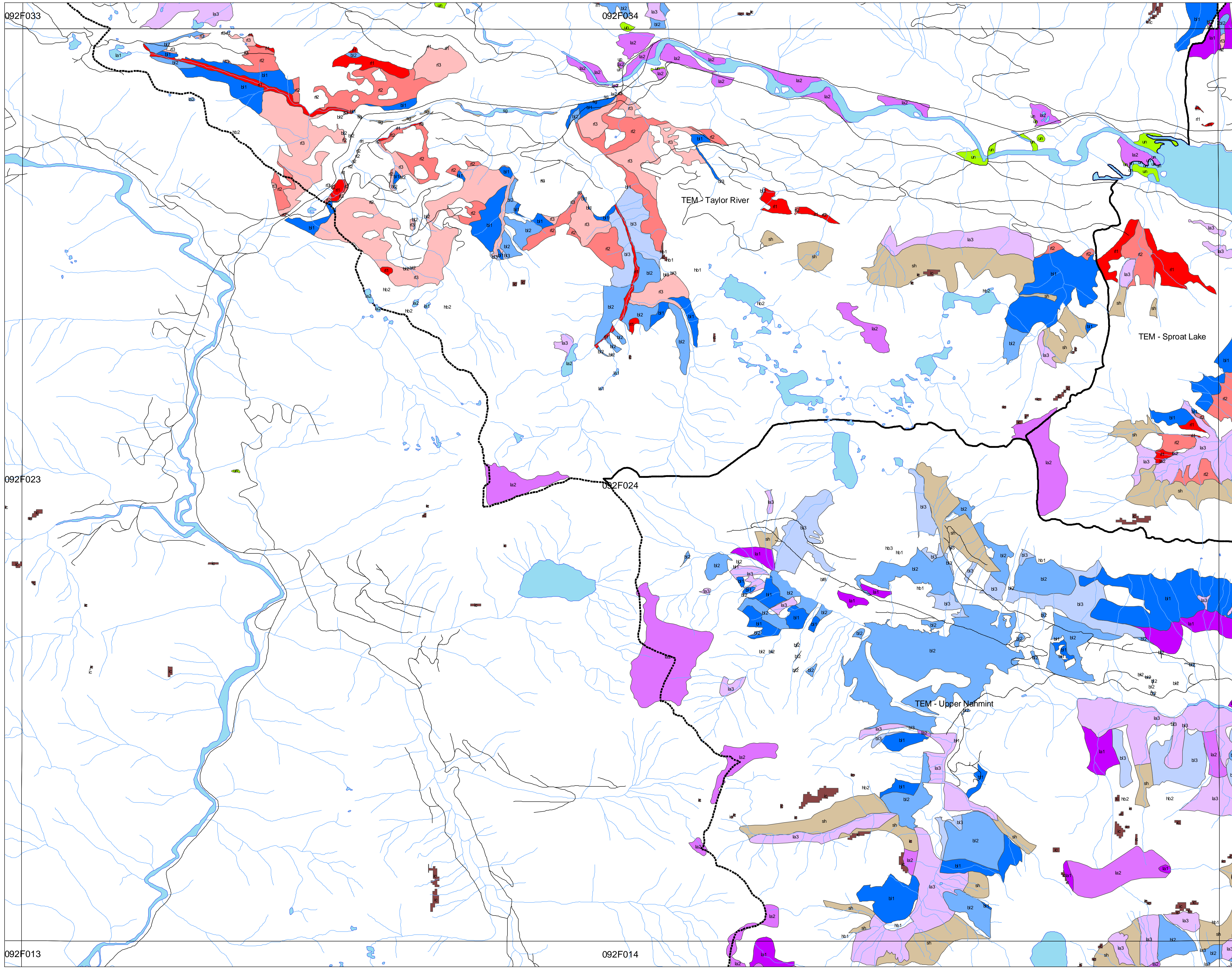
### Legend

#### SEI Classification

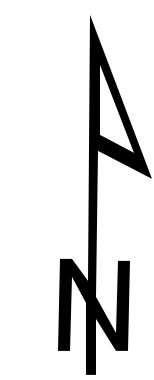
- Red List - > 70% Area
- Red List - 30% - 70% Area
- Red List - < 30% Area
- Blue List - > 70% Area
- Blue List - 30% - 70% Area
- Blue List - < 30% Area
- Landscape Rarity - 0 - 10 ha
- Landscape Rarity - 10 - 50 ha
- Landscape Rarity - 50 - 210 ha
- Cliffs
- Sparsley Vegetated
- Wetland
- Riparian
- Woodland

#### Other Features

- Roads
- Streams
- TEM Project Boundary
- Water
- 1:20000 Mapsheet




Plot Date: March 30, 2004



1:20,000

<p><b>Cliffs</b></p> <p>CL Steep slopes, often with exposed bedrock.</p> <p>cc coastal cliffs</p> <p>ic inland cliffs</p>	<p><b>Sparsely Vegetated / Herbaceous</b></p> <p>SV/HB Non-forested ecosystems with &lt;10% tree cover. Most have shallow soils and bedrock outcrops.</p> <p>hb* Herbaceous: a mix of grasses and forbs as well as mosses and lichens</p> <p>cs Coastal herbaceous: windswept shorelines and slopes influenced by proximity to the ocean</p> <p>sg Spit: sand and gravel deposits with low to moderate cover of grasses and herbs</p> <p>du Dunes: sand dunes with low cover of grasses and herbs</p> <p>sh Shrub: shrubs account for more than 20% of the vegetation</p> <p>ta Talus slopes</p> <p>ap Alpine</p> <p>hb1 &gt; 50% RO, hb2 20% - 40% RO, hb3 10% RO</p>	<p><b>Wetland</b></p> <p>WN Areas characterized by daily, seasonal or year-round water at or over the surface.</p> <p>bg Bog</p> <p>fn Fen</p> <p>sw Swamp</p> <p>sw Shallow water</p> <p>es Estuary</p> <p>un Undifferentiated wetland</p>	<p><b>Riparian</b></p> <p>RI Streamside areas along creeks, streams, and larger floodplains.</p> <p>fl low bench: areas flooded at least once every 2 years for part of the growing season</p> <p>fm medium bench: areas flooded every 1 - 6 years for short periods; usually deciduous or mixed</p> <p>fh High bench: areas periodically and briefly inundated by high waters; typically conifer-dominated</p>	<p><b>Woodland</b></p> <p>WD Dry, open stands of woodland, generally with between 10 - 25% tree cover</p> <p>mx Mixed conifer - deciduous</p>	<p><b>Rare Communities</b></p> <p>RC Rare plant communities or site series of rare occurrence within the DFA</p> <p>r1 Red-list, CDC</p> <p>r2 Blue-list, CDC</p> <p>r3 Class 1 Landscape rarity within the DFA (TFL44) - less than 10 ha</p> <p>r4 Class 2 Landscape rarity within the DFA (TFL44) - 10 to 50 ha</p> <p>r5 Class 3 Landscape rarity within the DFA (TFL44) - 50 to 210 ha</p>
---	--	---	---	---	--



**Weyerhaeuser**  
The future is growing™

**Map Note**  
Inquiries relating to this map should be directed to Weyerhaeuser, West Island Timberlands Planning Group, 3406 3rd Avenue, Fort Albert, B.C. V9Y 4E5

**Disclaimer**  
Although we take great care in the preparation of this information and are confident that it is accurate, we do not give any warranty as to its accuracy or suitability for any purpose that it might be used for. Users assume the risk associated with the accuracy and results of the contents of this document.