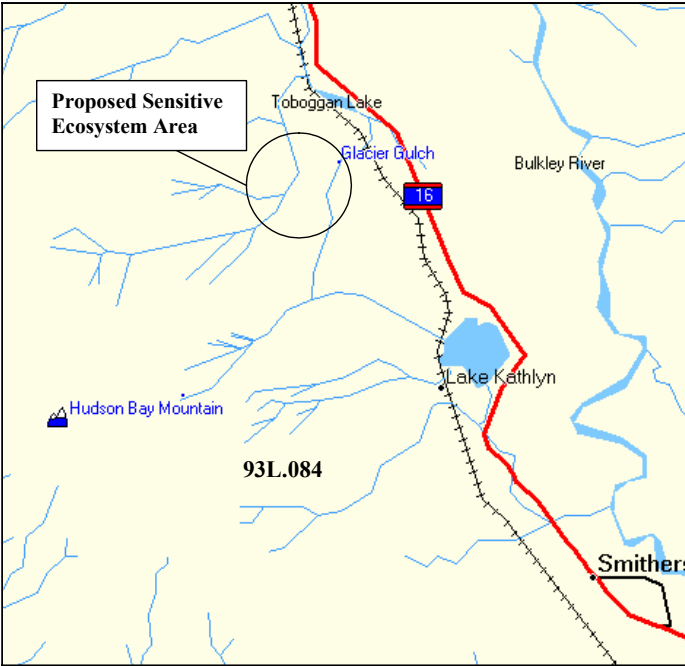


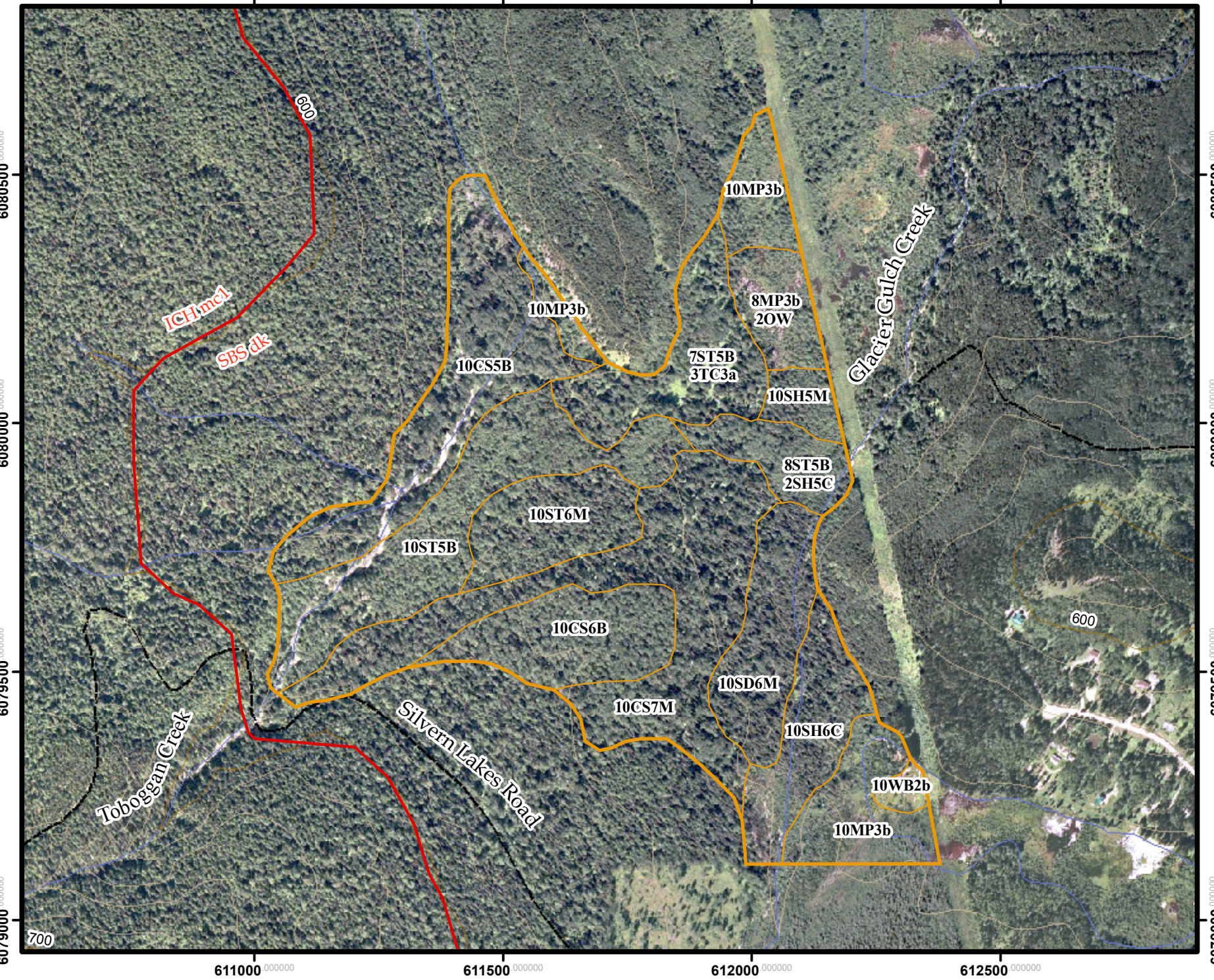
Toboggan Creek Fan Proposed Sensitive Ecosystem Area Terrestrial Ecosystem Map



The Toboggan Creek Fan Proposed Sensitive Ecosystem Area is composed of fans formed by the combined action of Toboggan and Glacier Gulch creeks. A portion of the fan is being proposed as a sensitive area under the Forest Practices Code because of the rarity and good condition of the ecosystems. Significantly, active fluvial deposition processes continue to maintain a unique diversity of ecosystems. Site series designations follow those used in Trowbridge (2006). This map accompanies the project report documented in de Groot (2003).

de Groot A.J. 2003. Toboggan Creek Fan Sensitive Area Management Plan, prepared for Ministry of Sustainable Resource Management, Smithers, BC.

Trowbridge A. 2006. Terrestrial Ecosystem Mapping and Rare Plant and Community Survey for the Davidson Project. Contract Report to Rescan Environmental Services Ltd., Smithers, BC.



Map Code	Site Series	Ecosystem Name	Site Description	Moisture Regime	Nutrient Regime
CS	Fm03	Cottonwood – Subalpine Fir – Devil’s Club	Fluvial fan community with complex mixed conifer and deciduous overstory and vigorous understorey.	5 to 6+	D to E
MP	Ws02	Mountain alder – Pink Spirea – Sitka sedge	Sedge marshes at the toe of fluvial landforms with patchy mountain alder canopy.	6+ to 7	C to D
SD	ICH mc2 05	Sx – Devil’s club – Lady fern	Toe slopes with significant near surface seepage. Mixed or deciduous stands of complex structure, horsetail present, minor MW component.	6- to 6+	D to E-
SH	SBS dk 07	Sxw – Horsetail	Wet soils on fluvial fans with abundant horsetail.	5 to 7	B to C
ST	SBS dk 06	Sxw – Twinberry – Coltsfoot	Moderately well to imperfectly drained mid to lower slopes on glacial till. Seral vegetation with abundant thimbleberry.	4+ to 5+	C- to D+
TC	00	Thimbleberry – Cow Parsnip	Moist fluvial thickets and meadows with scattered trembling aspen, soils have sandy capping over coarse gravels.	4+ to 5+	C to D
WB	Wm01	Beaked sedge – Water sedge	Sedge marshes at the toe of fluvial landforms with no shrub cover.	7 to 8	C to D
OW	00	Open Water	Patches of open water, typically associated with wetlands and beaver ponding.		

Decile 1 Ecosystem Code 1 Structural Stage 1

7CS6B

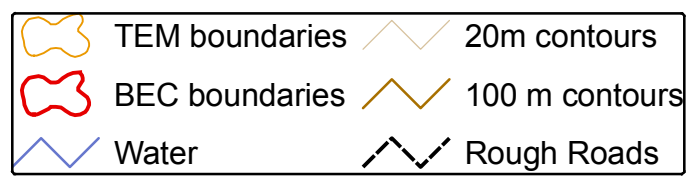
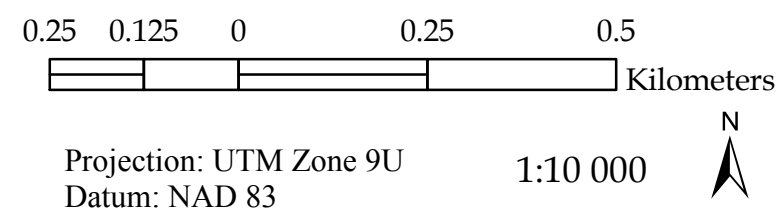
Decile 2 Ecosystem Modifier Structural Stage 2

3STe5M

Stand Type

Structural Stage	
1	Sparse/bryoid
2	Herb
3	Shrub/Herb
3a	Low shrub
3b	Tall shrub
4	Pole/Sapling
5	Young Forest
6	Mature Forest
7	Old Forest

Stand Type		
Modifier Code	Class	Definition
C	Coniferous	> 75% of total tree cover is coniferous
B	Broadleaf	> 75% of total tree cover is broadleaf
M	Mixed	neither coniferous or broadleaf account for > 75% of total tree cover



Ecosystem Mapping:
Adrian de Groot, Drosera Ecological Consulting

GIS and Cartography:
Aaron Trowbridge

