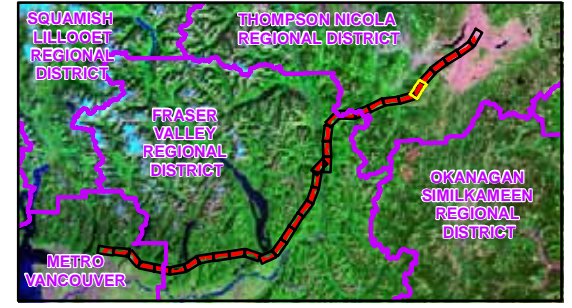
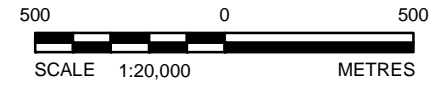


LEGEND

- Node
- ⊠ Existing Tower
- Indian Reserve
- Park/Protected Area
- ILM Project Preferred Alignment
- Existing ROW
- Existing Transmission Line
- Proposed Capacitor Station Site (Ruby Creek)
- Access to ILM Project Corridor
- Road
- Water Feature

REFERENCE

Orthophoto WMS data provided by the BC Ministry of Environment. All other data provided by BCTC.
 Projection: Transverse Mercator Datum: NAD 83 Coordinate System: UTM Zone 10



	INTERIOR TO LOWER MAINLAND TRANSMISSION PROJECT (ILM)		
	TITLE ILM PROJECT ALIGNMENT ORTHOPHOTOS (6 OF 34)		
	PROJECT No. 06-1422-034	SCALE AS SHOWN	REV. 0
	DESIGN SW 01 Oct. 2008		
	GIS MCM 01 Oct. 2008		
	CHECK		
	REVIEW		
Burnaby, B.C.			FIGURE 4-1