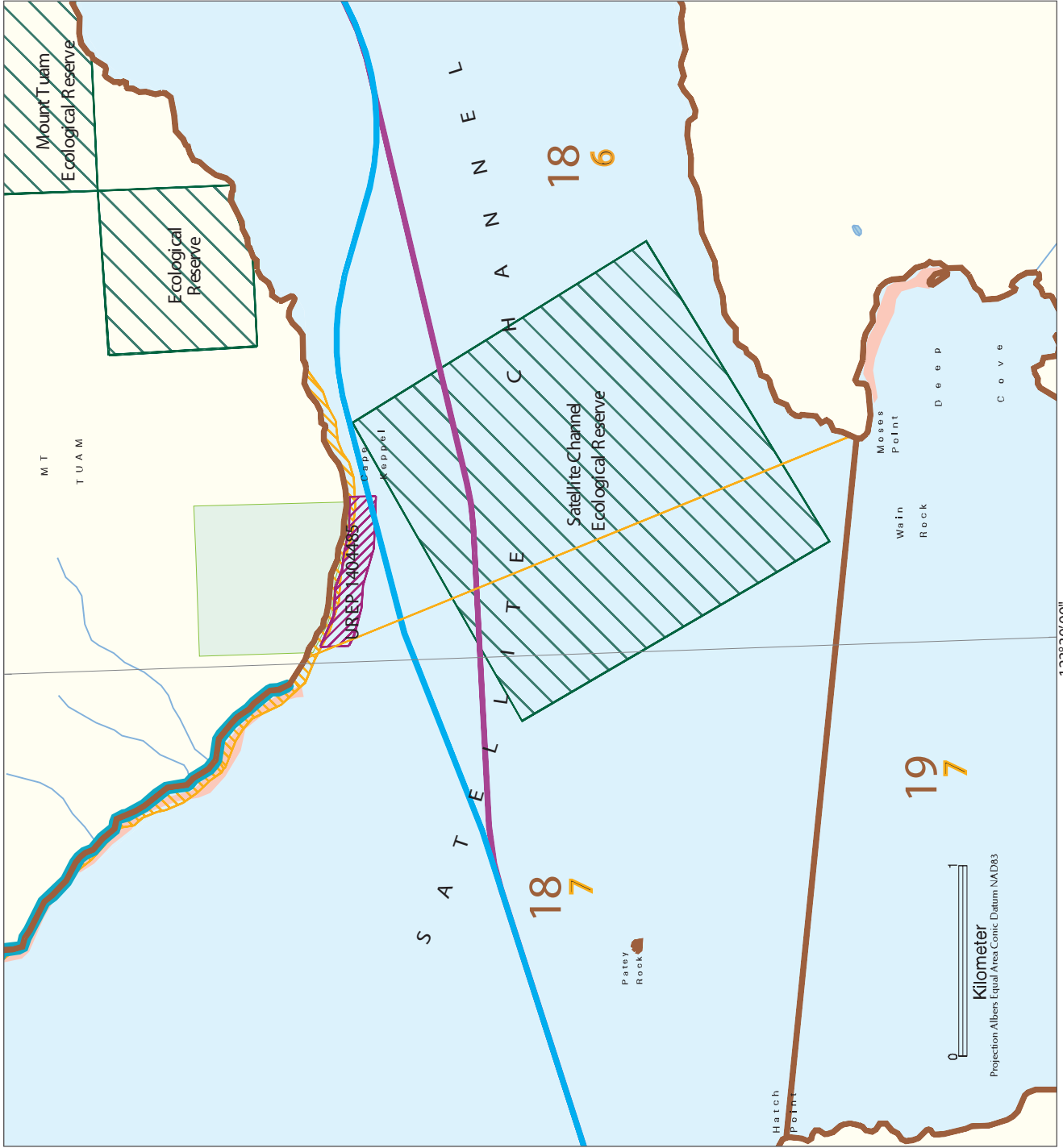


Figure 22 Satellite Channel - Recreational Invertebrate Fisheries



Ministry of Sustainable Resource Management
Decision Support Services

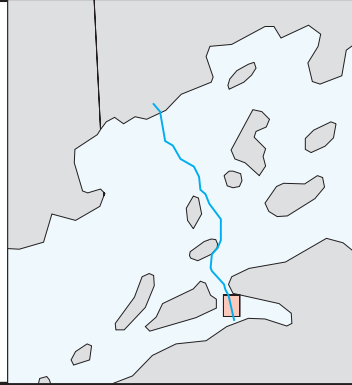
Prepared for:
Water Land and Air Protection

Legend

- Clam Beds from DFO Clam Atlas
- DFO Shellfish Closures
- Clam and Oyster
- DFO Statistical Areas
- DFO Statistical Sub Areas
- Existing Protected Areas
- UREP 1404485
- Municipal Parks
- Proposed GSX Pipeline Route
- Proposed Alternate GSX Pipeline Route

Data Source(s):

1:40,000 MSRM Coastal Resource Information
Pipeline routes - Aker Maritime, Aker Engineering, Inc.



Created By: SS

Date: March 26, 2002

Pathname: /georgia/maps/map5_8x11.map

Filename: /georgia/maps/map5_8x11.aml



123° 30' 00"