

Sensitive and Terrestrial Ecosystems Labels



Sensitive Ecosystems Inventory of the Sunshine Coast and Adjacent Islands



Table with 5 columns: Polygon Number, SE Class, SE Subclass, and Site Unit Names. Lists various polygons and their corresponding ecosystem classifications.

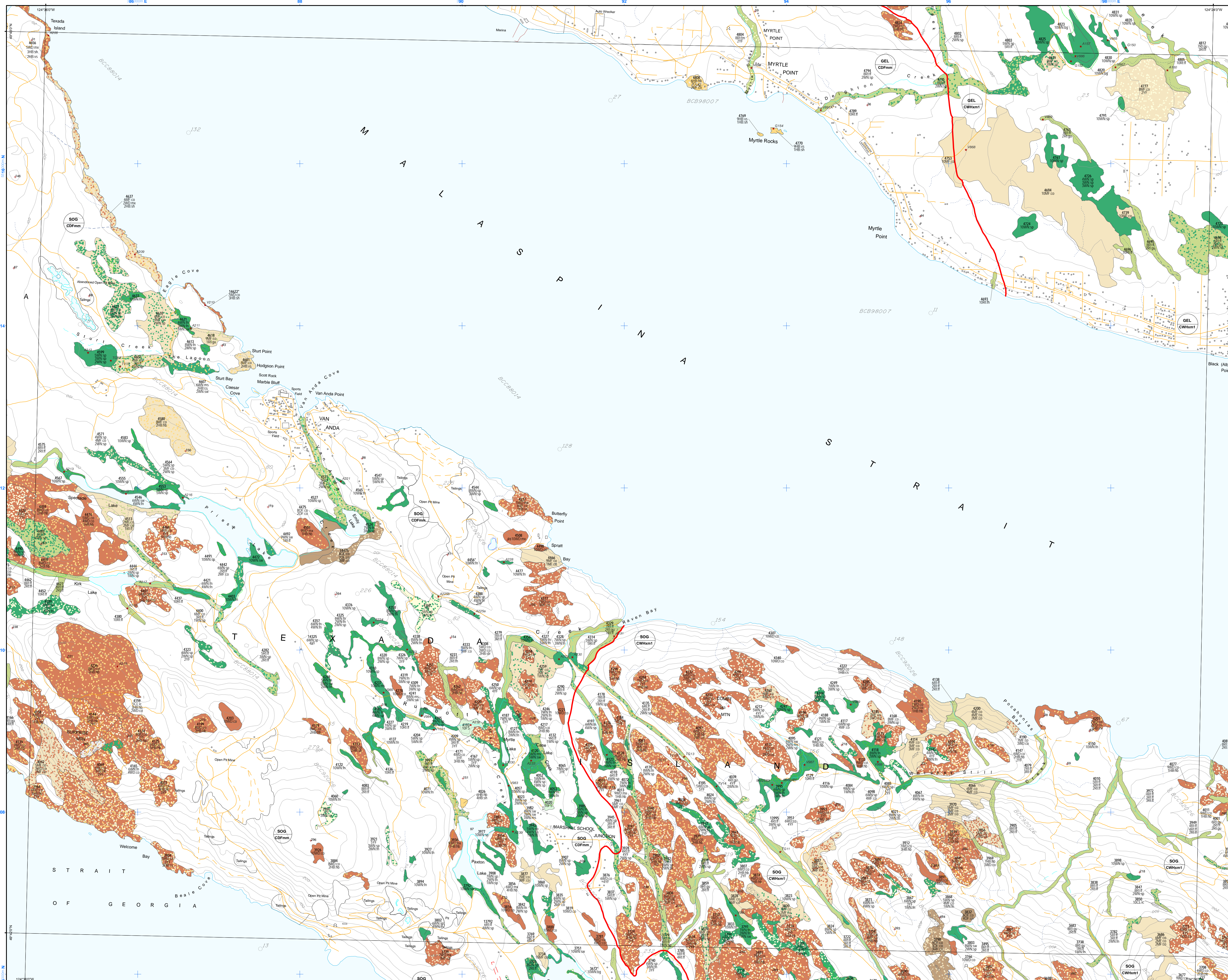


Table defining ecosystem components and labels. Includes sections for Sensitive Ecosystems (Old Forest, Woodland, Herbaceous, Riparian, Wetland, Cliffs), Other Important Ecosystems (Mature Forests, Seasonally Flooded Agricultural Fields, Other Mapped Ecosystems, Young Forests), Polygon Label, Ecosystem Components, Biogeoclimatic Units, and Ecosystems.

Table titled 'Sensitive and Terrestrial Ecosystems Label' and 'Terrestrial Ecosystem Map Codes and Site Unit Names'. Provides detailed codes and names for various ecosystems and site units.

What is a Sensitive Ecosystem? For the purpose of this study, an ecosystem is considered to be a portion of the landscape with relatively uniform dominant vegetation.

Rationale Ecologically significant lands and important wildlife habitats are fast disappearing throughout the lowlands surrounding the Strait of Georgia. Intense development pressures...

Methodology The mapping methods are based on the Vancouver Island SEI project and the Resources Information Standards Committee (RISC) Standard for Terrestrial Ecosystem Mapping (TEM) in BC.

Plan and implement all development activities in a manner that will not adversely affect or disturb the sensitive ecosystem. Consult a qualified professional to interpret the ecological inventory data and work to incorporate designs that maintain the functions and values of the natural ecosystem.

Acknowledgements Environment Canada (Canadian Wildlife Service) and the B.C. Ministry of Sustainable Resource Management (MSRM) jointly managed the project.

