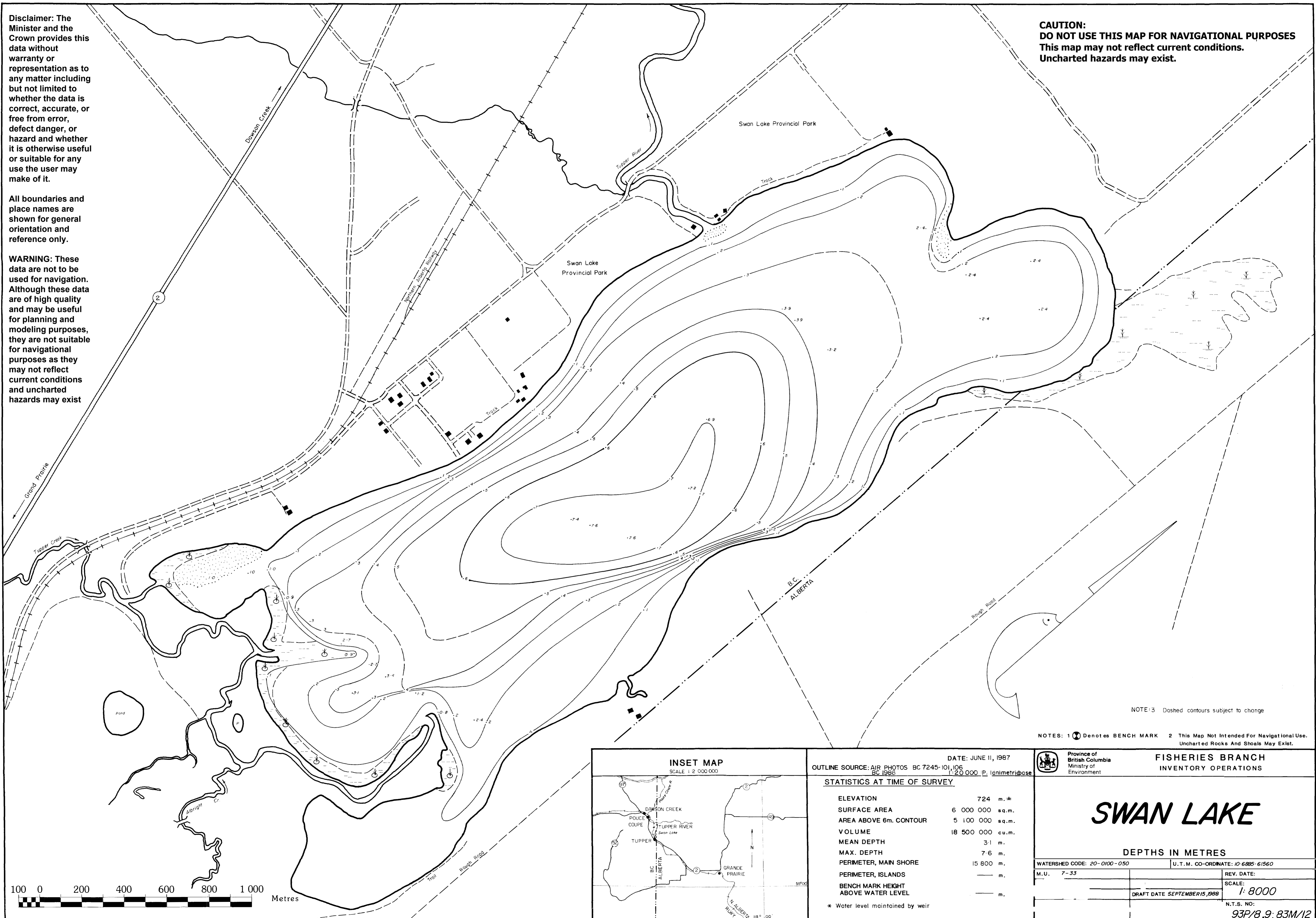


Disclaimer: The Minister and the Crown provides this data without warranty or representation as to any matter including but not limited to whether the data is correct, accurate, or free from error, defect danger, or hazard and whether it is otherwise useful or suitable for any use the user may make of it.

All boundaries and place names are shown for general orientation and reference only.

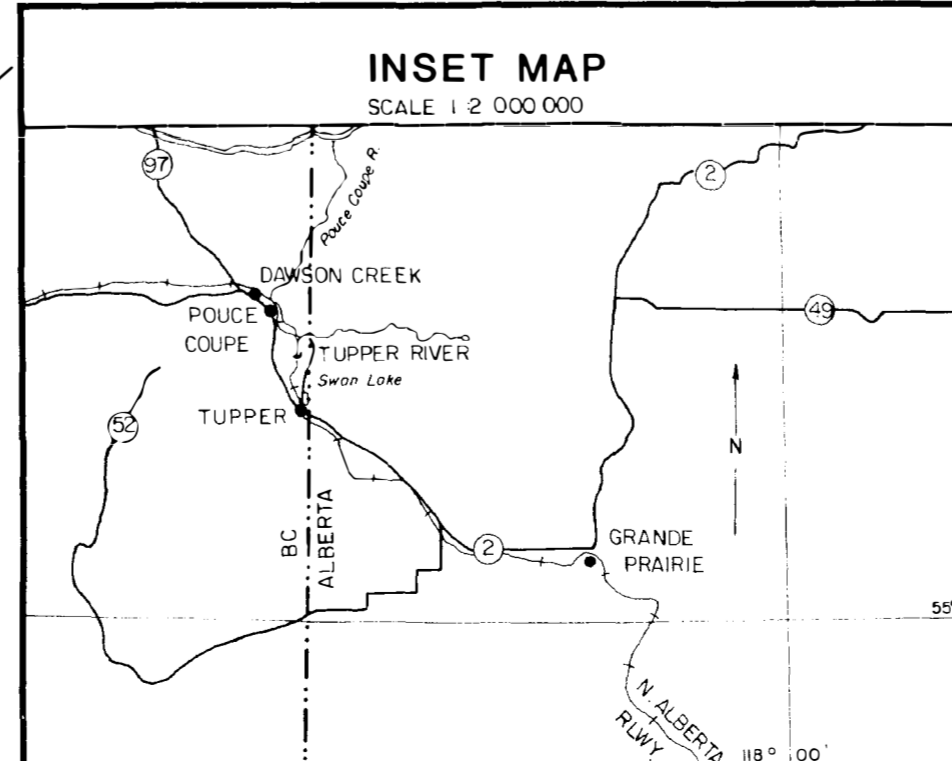
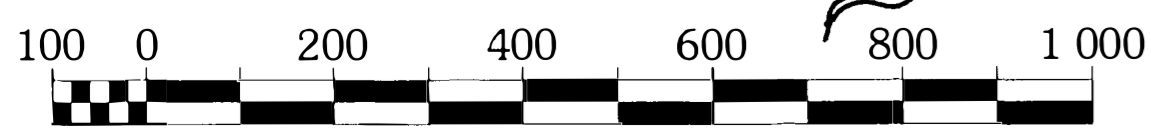
WARNING: These data are not to be used for navigation. Although these data are of high quality and may be useful for planning and modeling purposes, they are not suitable for navigational purposes as they may not reflect current conditions and uncharted hazards may exist

CAUTION:
DO NOT USE THIS MAP FOR NAVIGATIONAL PURPOSES
This map may not reflect current conditions.
Uncharted hazards may exist.



NOTE: 3 Dashed contours subject to change

NOTES: 1 (X) Denotes BENCH MARK 2 This Map Not Intended For Navigational Use. Uncharted Rocks And Shoals May Exist.



DATE: JUNE 11, 1987
OUTLINE SOURCE: AIR PHOTOS BC 7245-101, 106 BC 1986
SCALE: 1:20 000 P. Iametricbase

STATISTICS AT TIME OF SURVEY	
ELEVATION	724 m. ±
SURFACE AREA	6 000 000 sq.m.
AREA ABOVE 6m. CONTOUR	5 100 000 sq.m.
VOLUME	18 500 000 cu.m.
MEAN DEPTH	3.1 m.
MAX. DEPTH	7.6 m.
PERIMETER, MAIN SHORE	15 800 m.
PERIMETER, ISLANDS	— m.
BENCH MARK HEIGHT ABOVE WATER LEVEL	— m.

* Water level maintained by weir

Province of British Columbia
Ministry of Environment
FISHERIES BRANCH
INVENTORY OPERATIONS

SWAN LAKE

DEPTHS IN METRES

WATERSHED CODE: 20-0100-050	U.T.M. CO-ORDINATE: 10 6885 61560
M.U. 7-33	REV. DATE:
	SCALE: 1:8000
	DRAFT DATE SEPTEMBER 15, 1988
	N.T.S. NO: 93P/8,9; 83M/12