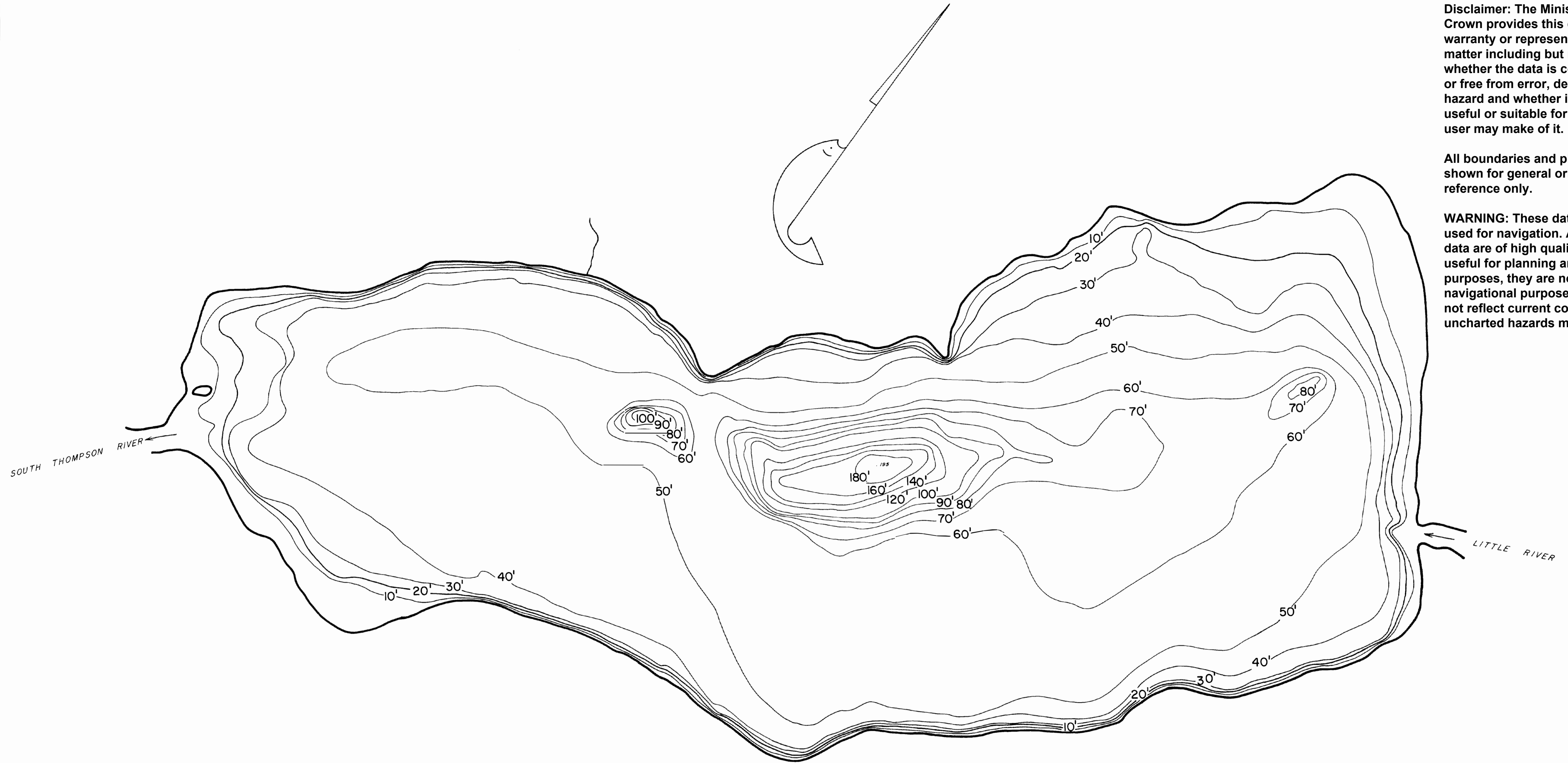


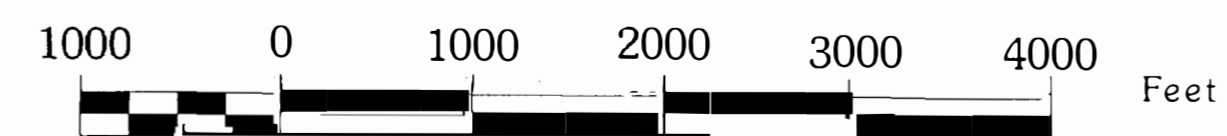
Disclaimer: The Minister and the Crown provides this data without warranty or representation as to any matter including but not limited to whether the data is correct, accurate, or free from error, defect danger, or hazard and whether it is otherwise useful or suitable for any use the user may make of it.


All boundaries and place names are shown for general orientation and reference only.

WARNING: These data are not to be used for navigation. Although these data are of high quality and may be useful for planning and modeling purposes, they are not suitable for navigational purposes as they may not reflect current conditions and uncharted hazards may exist.



**CAUTION: DO NOT USE THIS MAP FOR NAVIGATIONAL PURPOSES**  
 This map may not reflect current conditions. Uncharted hazards may exist.



NOTE:  DENOTES BENCH MARK

SHORE OUTLINE FROM :

DATE: AUG. 1949.

STATISTICS AT TIME OF SURVEY

1. ELEVATION 1,137 FT.
2. SURFACE AREA 4,480 AC.
3. VOLUME 211,300 AC.-FT.
4. EST. ANNUAL FLUCTUATION
5. MEAN DEPTH 47 FT.
6. MAX. DEPTH 195 FT.
7. PERIMETER
8. AREA 20FT. CONTOUR
9. HEIGHT OF BENCH MARK ABOVE WATER LEVEL

FISH AND WILDLIFE BRANCH  
 DEPARTMENT OF RECREATION AND TRAVEL INDUSTRY

*LITTLE SHUSWAP L.*

DATE: \_\_\_\_\_ SCALE: 1" = 1000 FT.  
 DWG. No: 82 L/13-E