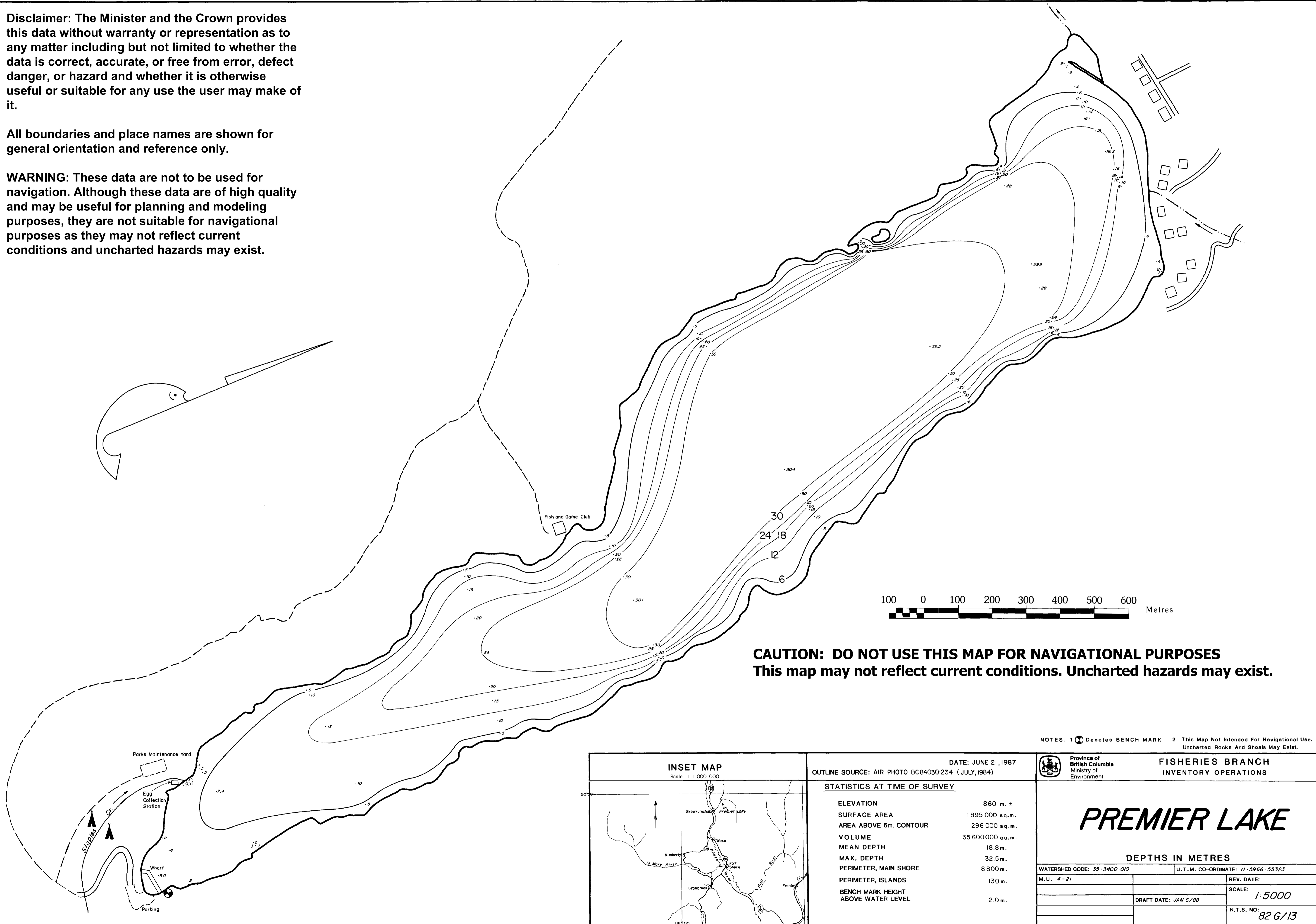


Disclaimer: The Minister and the Crown provides this data without warranty or representation as to any matter including but not limited to whether the data is correct, accurate, or free from error, defect danger, or hazard and whether it is otherwise useful or suitable for any use the user may make of it.

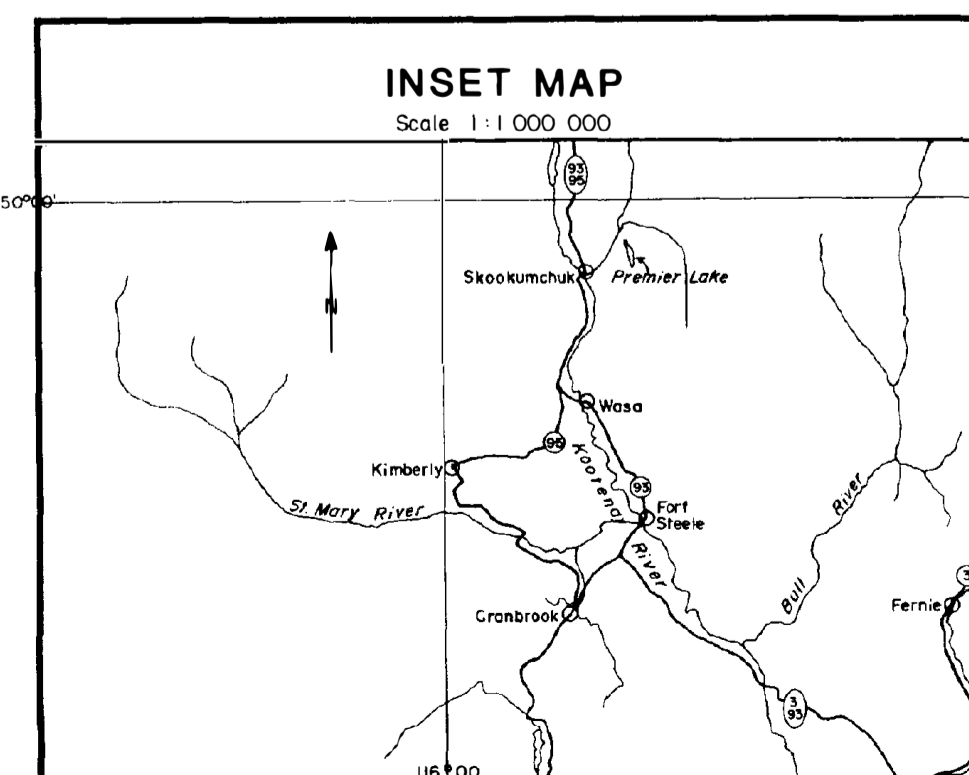
All boundaries and place names are shown for general orientation and reference only.

WARNING: These data are not to be used for navigation. Although these data are of high quality and may be useful for planning and modeling purposes, they are not suitable for navigational purposes as they may not reflect current conditions and uncharted hazards may exist.



CAUTION: DO NOT USE THIS MAP FOR NAVIGATIONAL PURPOSES
 This map may not reflect current conditions. Uncharted hazards may exist.

NOTES: 1 (X) Denotes BENCH MARK 2 This Map Not Intended For Navigational Use. Uncharted Rocks And Shoals May Exist.



DATE: JUNE 21, 1987
 OUTLINE SOURCE: AIR PHOTO BC84030-234 (JULY, 1984)

STATISTICS AT TIME OF SURVEY

ELEVATION	860 m. ±
SURFACE AREA	1 895 000 sq.m.
AREA ABOVE 6m. CONTOUR	296 000 sq.m.
VOLUME	35 600 000 cu.m.
MEAN DEPTH	18.8 m.
MAX. DEPTH	32.5 m.
PERIMETER, MAIN SHORE	8 800 m.
PERIMETER, ISLANDS	130 m.
BENCH MARK HEIGHT ABOVE WATER LEVEL	2.0 m.

Province of British Columbia
 Ministry of Environment
FISHERIES BRANCH
 INVENTORY OPERATIONS

PREMIER LAKE

DEPTHS IN METRES

WATERSHED CODE: 35-3400-010	U.T.M. CO-ORDINATE: 11-5966-55323
M.U. 4-21	REV. DATE:
DRAFT DATE: JAN 6/88	SCALE: 1:5000
	N.T.S. NO: 82 6/13