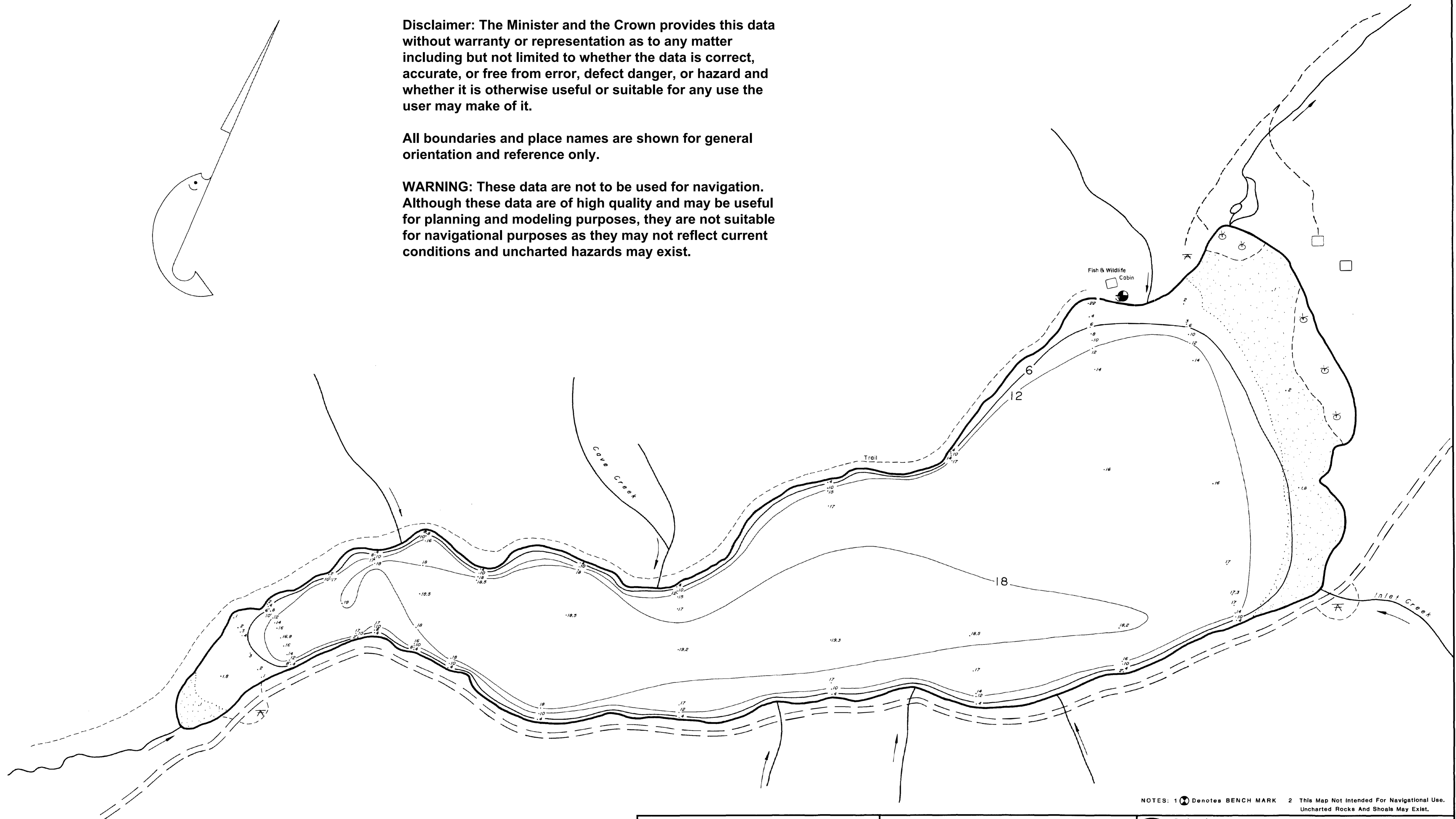
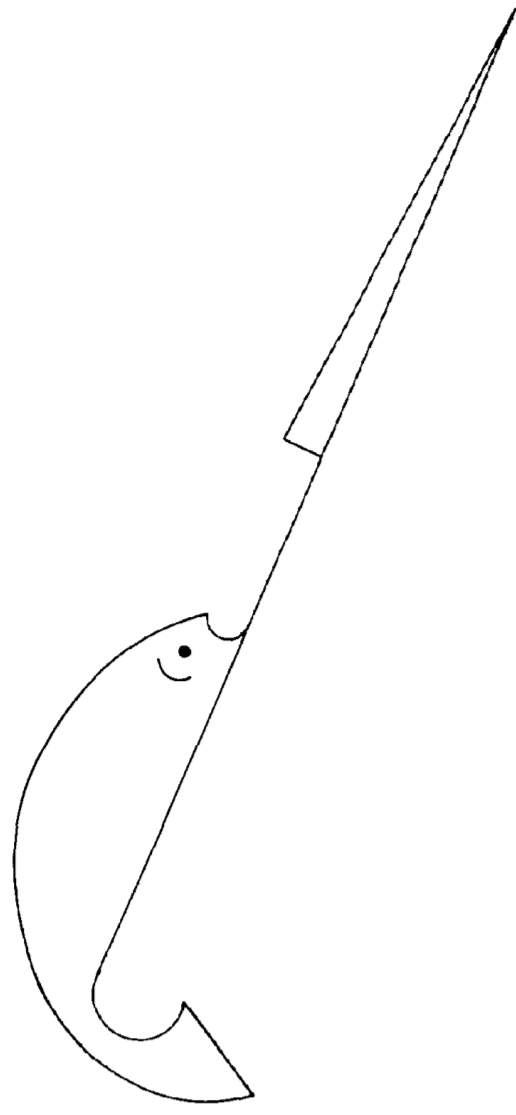


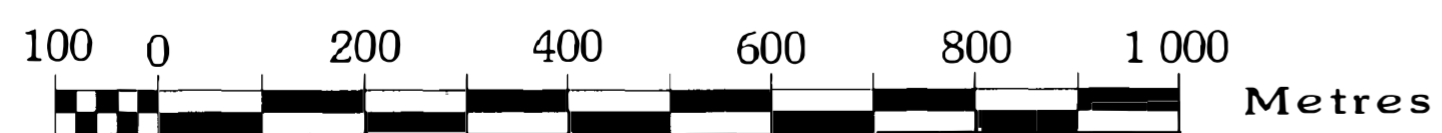
Disclaimer: The Minister and the Crown provides this data without warranty or representation as to any matter including but not limited to whether the data is correct, accurate, or free from error, defect danger, or hazard and whether it is otherwise useful or suitable for any use the user may make of it.

All boundaries and place names are shown for general orientation and reference only.

WARNING: These data are not to be used for navigation. Although these data are of high quality and may be useful for planning and modeling purposes, they are not suitable for navigational purposes as they may not reflect current conditions and uncharted hazards may exist.

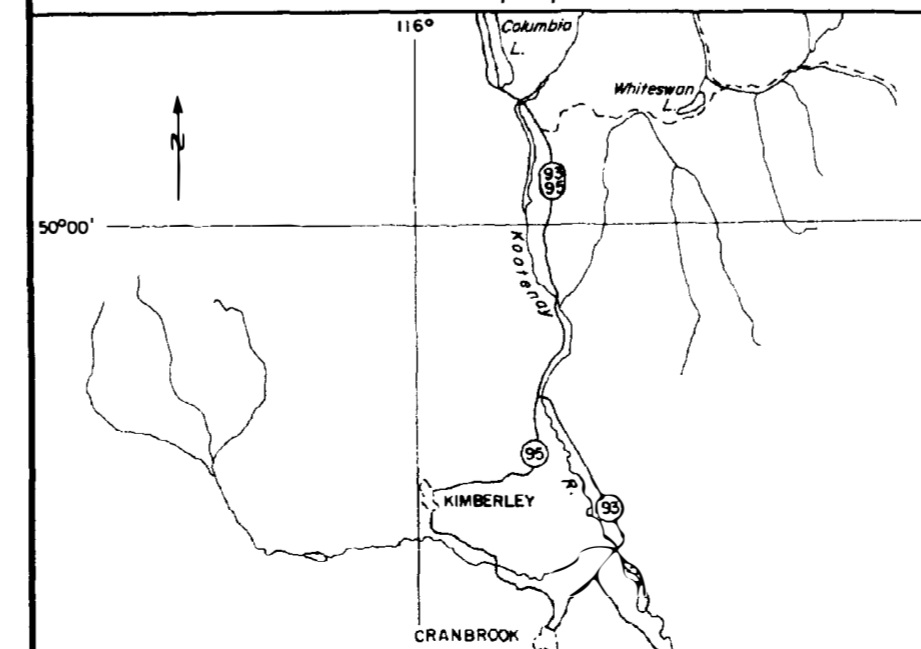


NOTES: 1 Denotes BENCH MARK 2 This Map Not Intended For Navigational Use. Uncharted Rocks And Shoals May Exist.



CAUTION: DO NOT USE THIS MAP FOR NAVIGATIONAL PURPOSES
This map may not reflect current conditions. Uncharted hazards may exist.

INSET MAP
Scale 1:1,000,000



DATE: JUNE 20, 1987.
OUTLINE SOURCE: AIR PHOTO BC 84035:034 (JULY, 1984)

STATISTICS AT TIME OF SURVEY

ELEVATION	1150 m. ±
SURFACE AREA	3 780 000 sq.m.
AREA ABOVE 6m. CONTOUR	720 000 sq.m.
VOLUME	49 000 000 cu.m.
MEAN DEPTH	13.0 m.
MAX. DEPTH	19.3 m.
PERIMETER, MAIN SHORE	11 900 m.
PERIMETER, ISLANDS	— m.
BENCH MARK HEIGHT ABOVE WATER LEVEL	2.0 m.

Province of British Columbia
Ministry of Environment
FISHERIES BRANCH
INVENTORY OPERATIONS

WHITESWAN LAKE

DEPTHS IN METRES

WATERSHED CODE: 35-4700-070	U.T.M. CO-ORDINATE: 11,6087,55592
M.U. 4-24	REV. DATE:
	SCALE: 1:7 500
	DRAFT DATE: MARCH 26, 1990
	N.T.S. NO: 82J/3,4