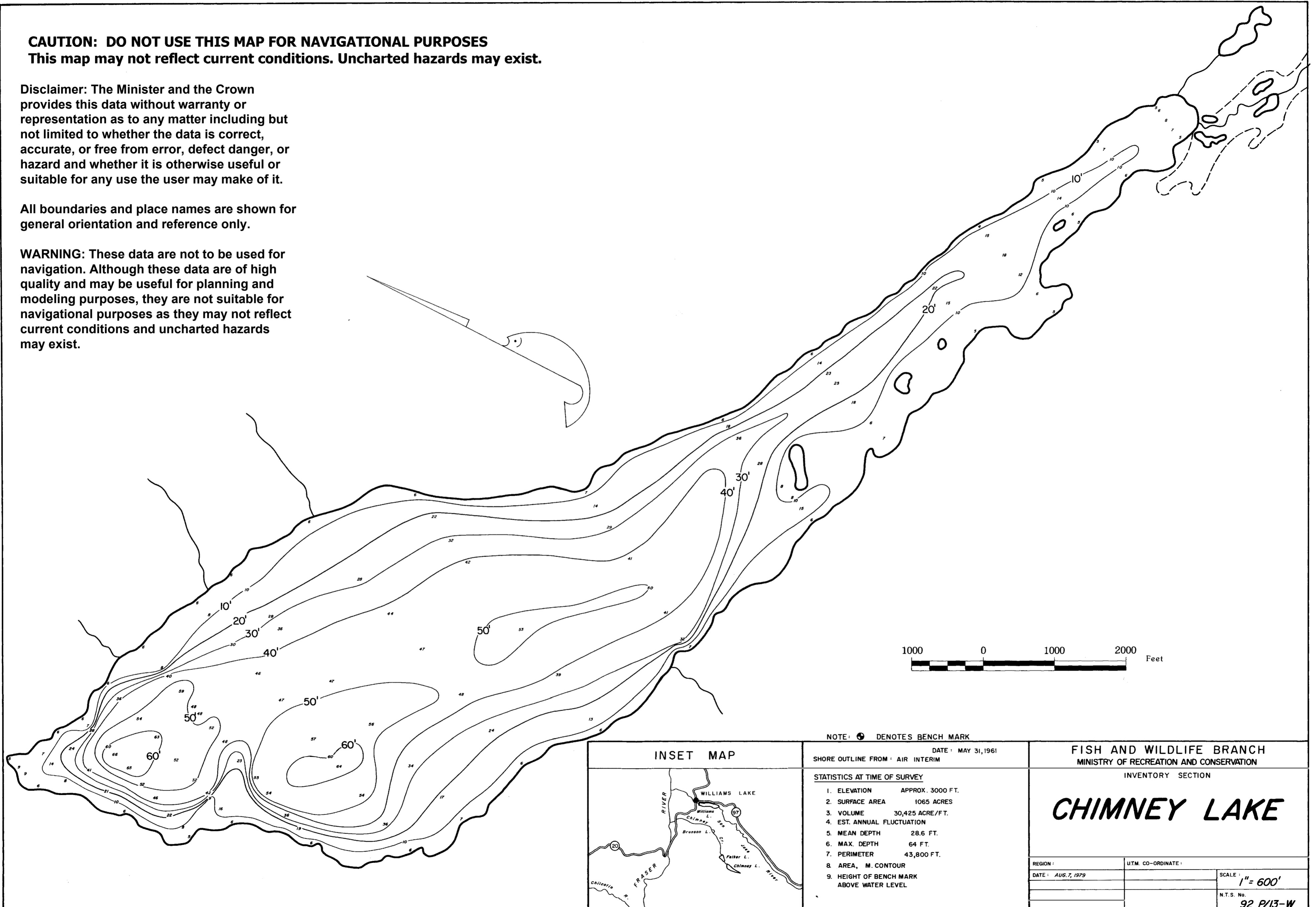


CAUTION: DO NOT USE THIS MAP FOR NAVIGATIONAL PURPOSES
 This map may not reflect current conditions. Uncharted hazards may exist.

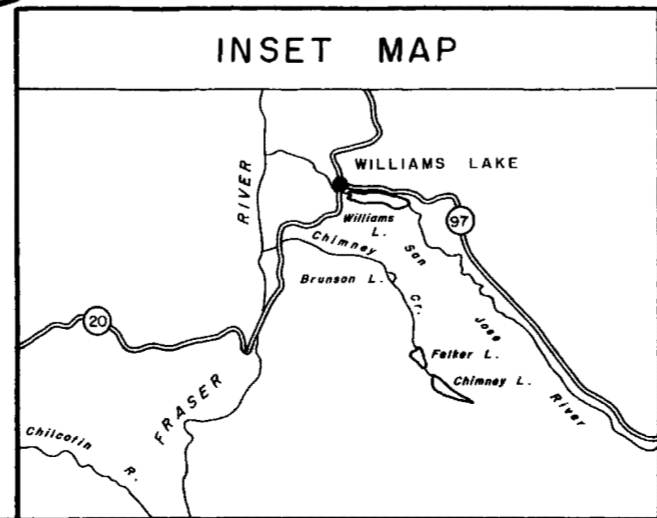
Disclaimer: The Minister and the Crown provides this data without warranty or representation as to any matter including but not limited to whether the data is correct, accurate, or free from error, defect danger, or hazard and whether it is otherwise useful or suitable for any use the user may make of it.

All boundaries and place names are shown for general orientation and reference only.

WARNING: These data are not to be used for navigation. Although these data are of high quality and may be useful for planning and modeling purposes, they are not suitable for navigational purposes as they may not reflect current conditions and uncharted hazards may exist.



NOTE: ● DENOTES BENCH MARK



DATE: MAY 31, 1961
 SHORE OUTLINE FROM: AIR INTERIM

STATISTICS AT TIME OF SURVEY

1. ELEVATION	APPROX. 3000 FT.
2. SURFACE AREA	1065 ACRES
3. VOLUME	30,425 ACRE/FT.
4. EST. ANNUAL FLUCTUATION	
5. MEAN DEPTH	28.6 FT.
6. MAX. DEPTH	64 FT.
7. PERIMETER	43,800 FT.
8. AREA, M. CONTOUR	
9. HEIGHT OF BENCH MARK ABOVE WATER LEVEL	

FISH AND WILDLIFE BRANCH MINISTRY OF RECREATION AND CONSERVATION	
INVENTORY SECTION	
CHIMNEY LAKE	
REGION:	UTM. CO-ORDINATE:
DATE: AUG. 7, 1979	SCALE: 1" = 600'
	N.T.S. No. 92 P/13-W