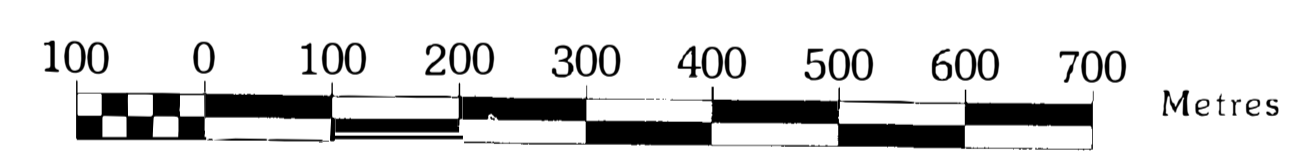


**Disclaimer:** The Minister and the Crown provides this data without warranty or representation as to any matter including but not limited to whether the data is correct, accurate, or free from error, defect danger, or hazard and whether it is otherwise useful or suitable for any use the user may make of it.

All boundaries and place names are shown for general orientation and reference only.

**WARNING:** These data are not to be used for navigation. Although these data are of high quality and may be useful for planning and modeling purposes, they are not suitable for navigational purposes as they may not reflect current conditions and uncharted hazards may exist.

**CAUTION: DO NOT USE THIS MAP FOR NAVIGATIONAL PURPOSES**  
 This map may not reflect current conditions. Uncharted hazards may exist.



NOTE:  DENOTES BENCH MARK

REVISED FEB. 1984. J.A.B.

SHORE OUTLINE FROM: AIR PHOTO DATE: AUG. 1958.

FISH AND WILDLIFE BRANCH  
 DEPARTMENT OF RECREATION AND TRAVEL INDUSTRY

STATISTICS AT TIME OF SURVEY

- 1. ELEVATION APPROX. 1,800 FT.
- 2. SURFACE AREA 785 ACRES
- 3. VOLUME 28,600 ACRE FT.
- 4. EST ANNUAL FLUCTUATION
- 5. MEAN DEPTH 36.4 FT.
- 6. MAX. DEPTH 73 FT.
- 7. PERIMETER 32,000 FT.
- 8. AREA 20 FT CONTOUR 613 ACRES
- 9. HEIGHT OF BENCH MARK ABOVE WATER LEVEL

# TYHEE LAKE

|           |         |
|-----------|---------|
| DATE      | SCALE   |
|           | 1:6,000 |
| UNCL. NO. | 93 L/11 |