

**TFL 23**

**Caribou Assessment & Monitoring Report:  
Pool Creek, Coffee Creek and  
St. Leon South East**

March 2008

**Submitted to:**

Ron Palmer, RPF  
Pope & Talbot  
Nakusp, BC

**Prepared by:**

Paul Seaton<sup>1</sup>  
&  
Dennis Hamilton, RPBio<sup>2</sup>

---

<sup>1</sup> Ingersol, Nakusp, BC

<sup>2</sup> Nanuq Consulting Ltd., Nelson, BC

## **BACKGROUND**

This report is for reconnaissance-level assessments conducted in 2007 on TFL 23. The Pool Creek, Coffee Creek, and St. Leon South East Planning Units is depicted in Appendix 1.

Field sampling procedures followed provincial wildlife habitat assessment procedures (RIC 1998), as reported previously by Hamilton et al (2004). The procedures outline a five-step process:

- Step 1 - defining the planning unit;
- Step 2 - inventory collation and mapping
- Step 3 - the reconnaissance-level field assessment;
- Step 4 - stand-level field assessment; and,
- Step 5 - reporting.

## **RESULTS AND DISCUSSION**

In 2007 P&T filed for bankruptcy protection and we were informed to stop work. This direction combined with weather constraints meant only Steps 1, 2 and part of 3 of planned field work was able to be completed. The remainder of the summer field sampling funding was transferred to the winter monitoring program.

In summer 2007, we completed some of initial planning and some field work; however, reporting was curtailed due to the stop work order. One day in each Planning Unit was spent in the field to confirm access, Planning Unit boundaries, HLPO Management Zones and to confirm the proposed reconnaissance routes from Steps 1 & 2. The results are illustrated in Appendix 1. During the field review any evidence of caribou use was transferred to the monitoring program component. The Coffee Creek drainage had an extensive burn in 2003 and had not been taken into consideration with the Capability/Suitability habitat mapping. Extra time was taken when doing the planning and monitoring to map out this burn. It was then transferred to the Caribou Assessment map for future reference.

As part of Steps 1 & 2 we identified gaps regarding historical information, which was compiled and added to the GIS database. A summary is provided in Table 1.

Monitoring was conducted in various locations throughout TFL 23. These locations were historical Planning Units or areas that have been previously monitored. A summary of the 2007 monitoring is in Table 2 & 3.

**Table 1. Historical Caribou sampling in TFL 23.**

<b>Planning unit</b>	<b>Total Hectares</b>	<b>Recon. Routes</b>	<b>WHA plots</b>	<b>Monitoring</b>	<b>Summer Plots</b>	<b>Winter Plots</b>
Turner	3164	5	11	7	8	4
Cape Horn	4666	5	15	5		1
St. Leon	4996	3	8	8	7	
Middle St. Leon	1738	1	4	5		
St. Leon Face	902	1	7	4		
Halfway	18104	3	10	10	6	1
MacKenzie	2697	2	4	4		
Hill Cr.	1864	1	4	2		
Pearson	1889	3	11	2	1	1
Peak	3711	2	8	3		1
Thompson	1522	2	6	2		
Ferguson	1817	1	2	6	1	
Mnt. Goat	2003	1		2		
Finckle Cr.	3807	2	2	1	4	
Lardeau	1928	2	6	2	1	
Circle City	3656	2				
Mohawk	2810	3	8	2	3	
Nacillewaet	1222	1	5	2		
Halcyon Ridge	2246	1	4	5		
St Leon East	670	2	8	6	1	
St Leon (SE)	1644	1		2		
Coffee Cr.	1051	1		1	1	1
Pool	1232			1		
<b>Total</b>	<b>69339</b>	<b>45</b>	<b>123</b>	<b>82</b>	<b>33</b>	<b>9</b>

**Table 2. Monitoring and Overview Flights**

Date	Observation Caribou	Est. #	Location	UTM	Comments
Jan 25, 08	Tracks	4	Cape Horn / St. Leon	445741 5579309	Sled tracks through caribou tracks.
	Tracks	2	Cape Horn / St. Leon face	442694 5581150	Working along ridgeline.
	Tracks	6	Nacillewaet	443106 5601807	Tracks from Halcyon - Nacillewaet
	Tracks	6	Trout Mountain	457099 5606990	Old sign above Roca mine
	Tracks	2	Wilkie Creek	453080 5600106	
	Tracks	6	Halfway	453031 5591162	Above the back hot springs
	nil		Mohawk , Ferguson, Alpha & Coffee Creek		
Feb 19, 08	Tracks	4	Cape Horn	445202 5577921	Caribou tracks moved south of sleds.
	Tracks	6	Nacillewaet	443415 5601655	
	Tracks	4-6	Trout Mountain	456697 5606861	
	Visual	2	St. Leon	452174 5585628	Back end on steep slopes away from skiers
	nil		Coffee Creek & Halfway		

**Table 3. Reconnaissance Monitoring****St Leon.** Mainline and Face

Date	Observation Caribou	Est. #	Location	UTM	Snow cm.	other	No. H,M,L
Oct 10, 07	Tracks	2	15 km on St. Leon road	445675 5584734	0	Deer by Grady lake pass and in back end.	M
	Track	1	From 17km junction to 19km.	448955 5584886	0		
	Tracks	2	Crossing last bridge	453938 5583781	5		
	Tracks	2	Back end heading towards halfway pass.	454302 5583064	10	Wolf tracks (3) on top caribou tracks.	
Oct 24, 07	nil					Wolf tracks in back end and by Grady pass. Deer tracks by Grady Pass	M
Jan 7, 08	nil						
Jan 14, 08	nil					Deer tracks on St. Leon face.	M

**Halfway,** River road, halfway road and lower St. Leon

Date	Observation Caribou	Est. #	Location	UTM	Snow cm.	other	No. H,M,L
Oct 9, 07	nil					Deer sign throughout Halfway road and up Coffee Creek	
Jan 2, 08	nil					Moose and deer sign to 11km river road. Visual of 3 moose in clear-cut at 10 km.	H
Jan 7,	nil					Moose and deer sign to 7 km on Halfway road. Visual of 1 Moose up west fork of Deep creek. Deer and moose sign lower St. Leon	H L H
Jan 17	nil					Moose sign to 8km deer to 5km on river road. Large cougar track at 1km.	H

**Mohawk, Pool**

Date	Observation Caribou	Est. #	Location	UTM	Snow cm.	other	No. H,M,L
Oct 11 07	nil					Moose track top of Mohawk road.	

**Halcyon**

Date	Observation Caribou	Est. #	Location	UTM	Snow cm.	other	No. H,M,L
Jan 2, 08	nil					Deer and moose tracks first 4km.	H
Jan 17 08	nil					Deer and moose tracks first 3km.	L

**Ferguson, Broadview and Alpha**

Date	Observation Caribou	Est. #	Location	UTM	Snow cm.	other	No. H,M,L
Nov 3, 07	nil					Deer tracks on lower Alpha	L
Jan 18, 08	nil					Possible old lynx track on Alpha road.	

**Cape Horn** south side, north side

Date	Observation Caribou	Est. #	Location	UTM	Snow cm.	other	No. H,M,L
Dec 28, 07	nil					Deer and moose tracks on south side.	H
Jan 14, 08	nil					Deer and moose tracks on both sides.	H

**Peak Rd.**

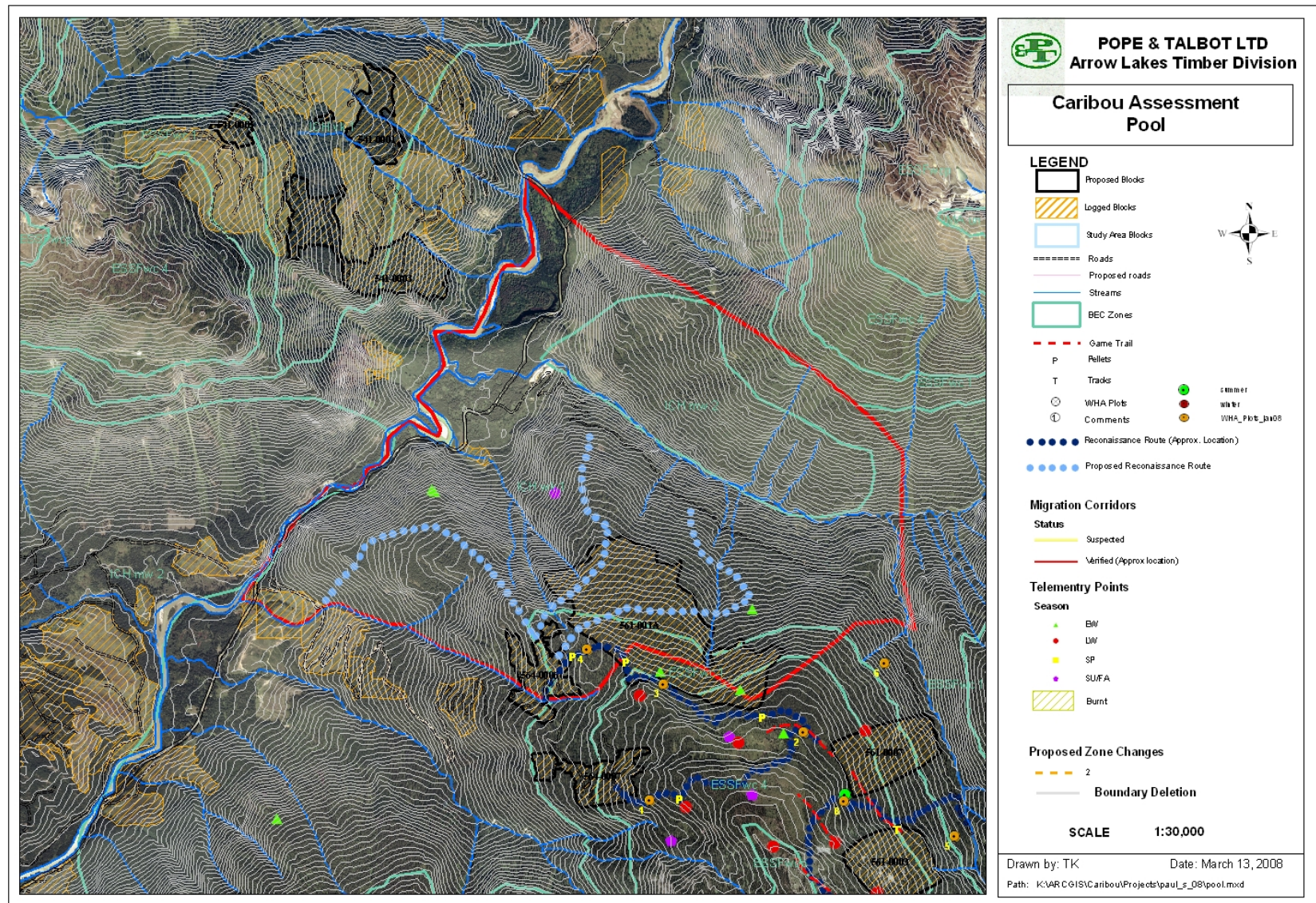
Date	Observation Caribou	Est. #	Location	UTM	Snow cm.	other	No. H,M,L
Oct 11 07	nil					Deer tracks throughout.	M
Nov 3 07	nil					Deer tracks throughout	L
Jan 18, 08	nil						

**Turner**

Date	Observation Caribou	Est. #	Location	UTM	Snow cm.	other	No. H,M,L
Dec 28 07	nil					Deer and moose tracks up to 7km.	H
Jan 6 08	track	1	Mt. Abriel	4409610 5576216	110	Deer and moose tracks up to 7km. Visual of 1 moose towards Cape horn	H

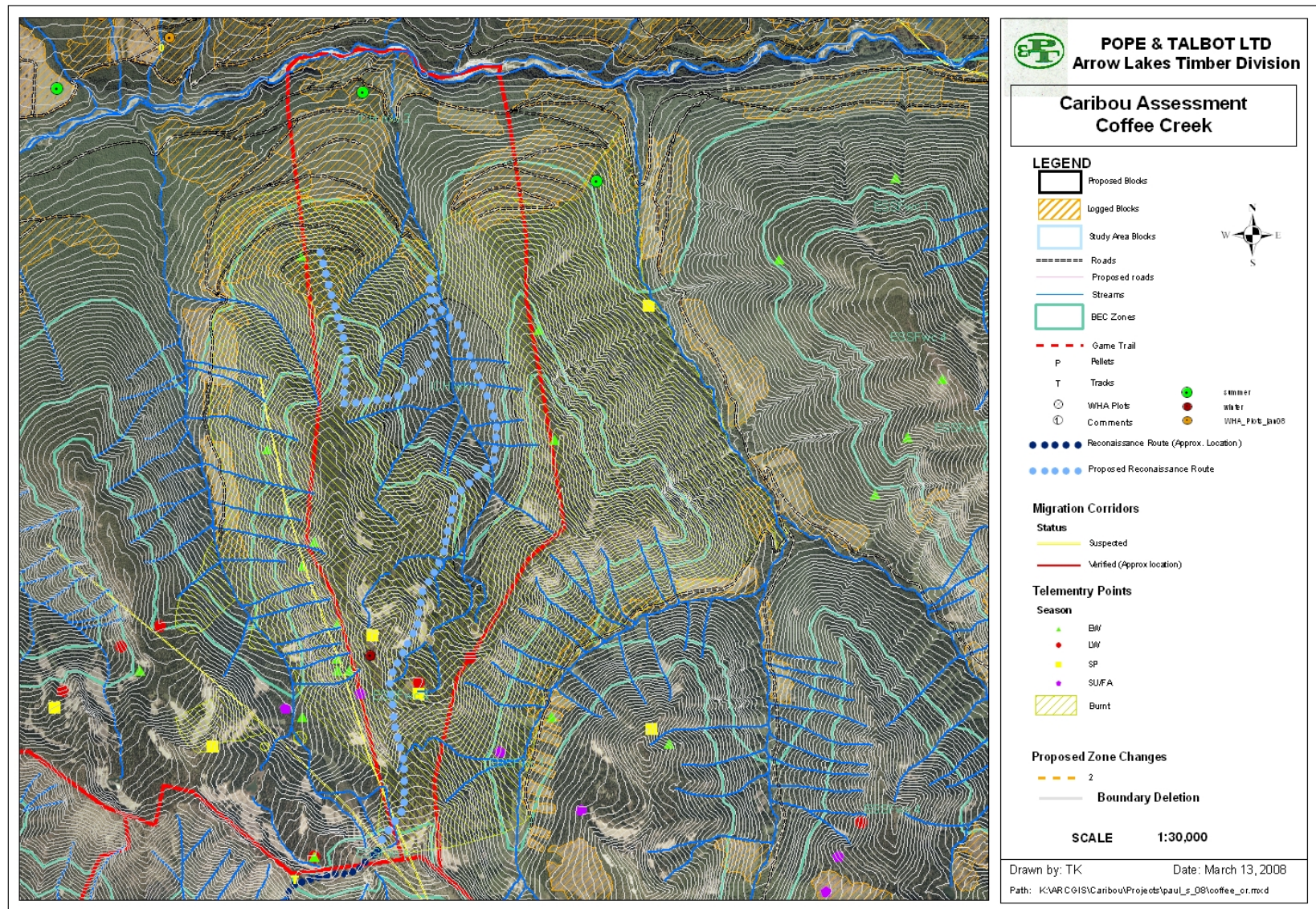
## **Appendix 1. Caribou Assessment Maps**





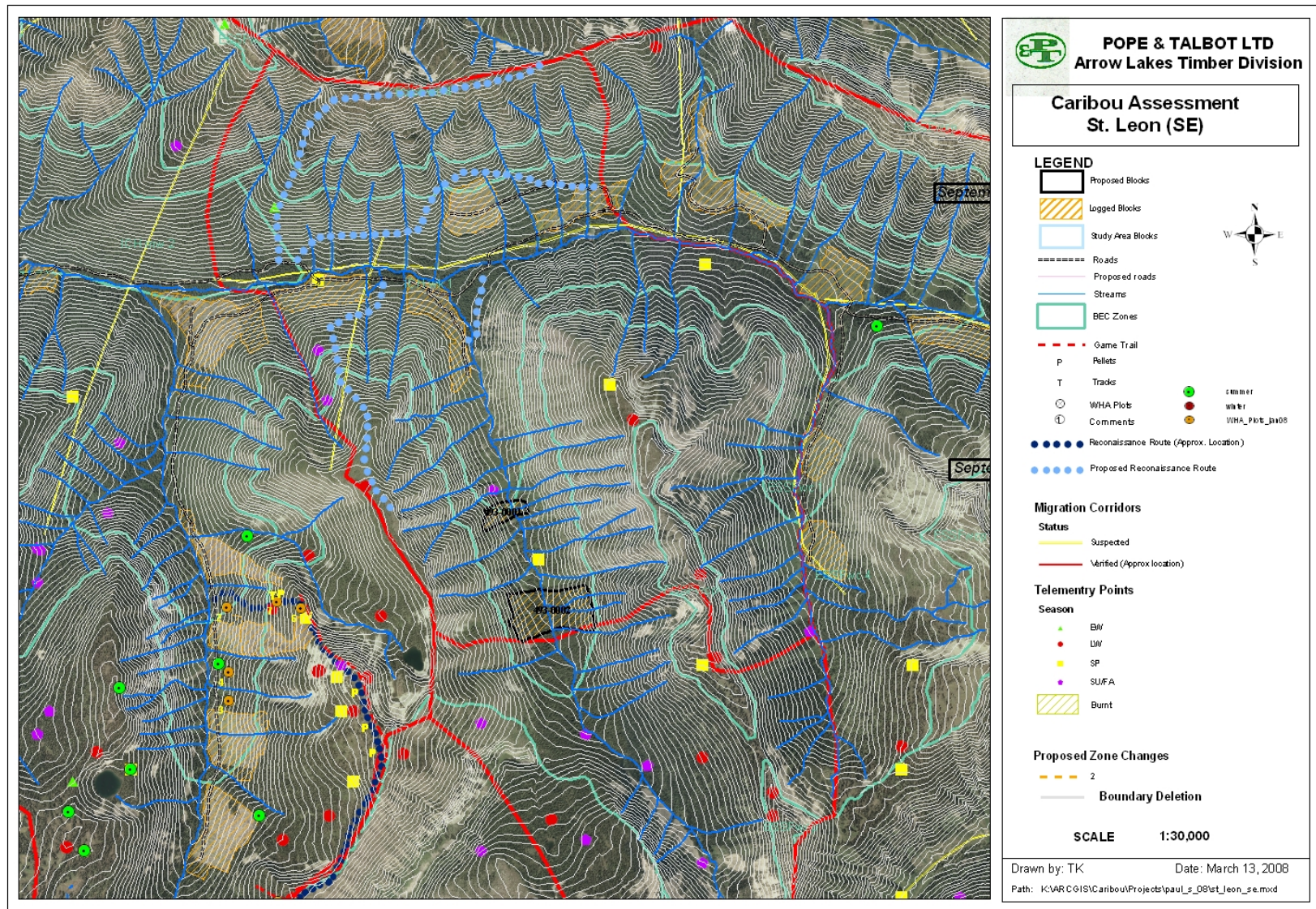
Pool Creek Planning Unit Indicating Proposed Reconnaissance Routes.





Coffee Creek Planning Unit Indicating Proposed Reconnaissance Routes.





St. Leon SE Planning Unit Indicating Proposed Reconnaissance Routes.

## References Cited

- Armleder, H.M., S. Stevenson, and S.D. Walker. 1992. Estimating the Abundance of Arboreal Forage Lichens. Land Management Handbook Field Guide Insert 7. Ministry of Forests, Research Program, Victoria, BC.
- Hamilton, D., and S.F. Wilson. 2002. Central Selkirk Mountain Caribou Habitat Use and Species-habitat Model for TFL23. Prepared for Pope & Talbot, Nakusp, BC.
- Hamilton, D., D. Seaton and C. Leitch. 2004. TFL23 Mountain Caribou Landscape Unit Planning and Reporting Procedures, Version 3.0. Arrow Forest District.
- LUP (Landscape Unit Planning) Working Group. 2002. Caribou Management in TFL#23: Agreement for District-Level Implementation Issues. Prepared for Arrow Forest District, Castlegar, BC.
- Resource Inventory Committee. 1998. Field manual for describing terrestrial ecosystems, Land Management Handbook No. 25. BC Ministry of Forests and BC Ministry of Environment, Lands and Parks, Victoria, BC.