

FISH & WILDLIFE REGIONAL OFFICE  
**RECEIVED**

MAR 14 1995

NELSON, B. C.

78700-30  
Caribou data

March 7, 1995

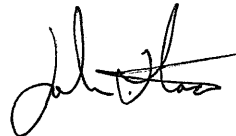
Re: Caribou censuses in the Kinbasket Lake and Duncan River areas

Enclosed are the results of caribou censuses for the Kinbasket Lake area in the Golden Forest District and the Duncan River / Lardeau River areas of the Kootenay Lake Forest District. The censuses were flown in a 206 B helicopter with a pilot and three observers. The censuses were 5-6 days after the last snowfall. Sightability of animals was probably high as recent monitoring of collared caribou in the censused areas showed them to be at treeline and easily observed.

This was a cooperative effort between the Min. of Forests, the Min. of ELP and Parks Canada with funding for the Kinbasket survey coming from the Columbia Basin Wildlife Compensation Program.

If you have any further questions you can contact John Flaa at 837-7504.

Sincerely



c.c.: Guy Woods MOELP  
Bob Bradly B.C. Hydro  
Darcy Monchuk M of For Golden  
Dale Anderson M of For Kootenay Lakes  
Larry Ingram CBFWCP  
Bob Ferguson MOELP  
Mike Knapik MOELP

① ENTER on  
UIDB.

② Copy to CMH.

DUNCAN/LARDEAU  
CARIBOU CENSUS

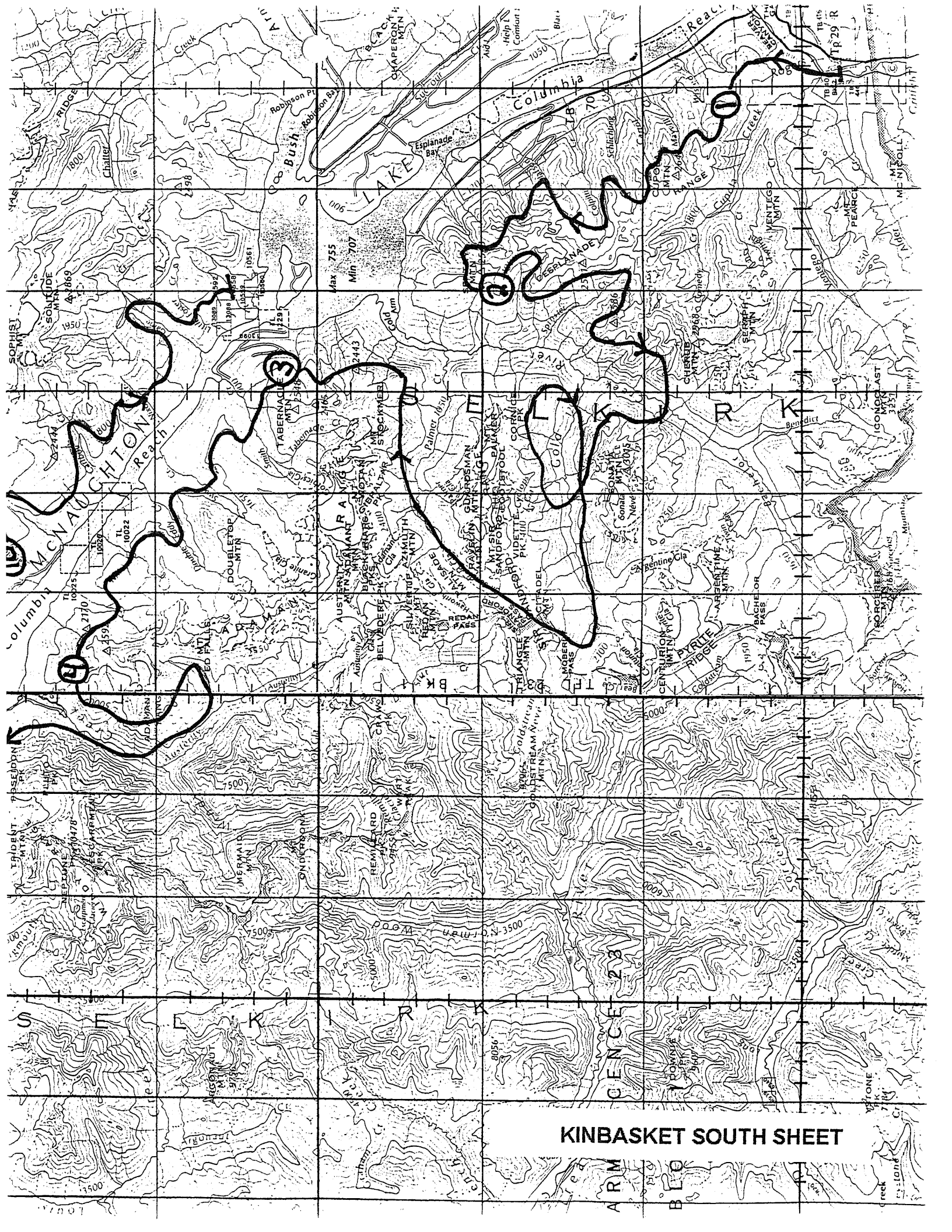
CARIBOU CENSUS								
LOCATION: DUNCAN/LARDEAU								
DATE: FEBRUARY 28, 1995								
OBSERVERS: MCLELLAN/FLAA/KNAPIK								
PILOT: D. WASSIK								
	SIGHTING#	ZONE	EASTING	NORTHING	TOTAL	CALF	ADULTS	UNC
	1	MG	878	434	8	2	6	
	2	MG	933	115	3		3	
	3	MG	920	120	2		2	
	4	MG	872	178	8	2	6	
	5	MG	797	244	3		3	
	6	MG	560	170	7	1	6	
	7	MG	610	200	11	2	9	
	8	MG	700	90	6		6	
	9	MG	820	60	5		5	
	10	MG	810	70				10TRACKS
	11	MG	790	10	12	2	10	
	12	MF	907	945				4TRACKS
	13	MF	927	975	2	1	1	
<b>TOTAL</b>					67	10	57	14TRACKS
<b>CALVES/100ADULTS:</b>		18						
<b>ESTIMATE FOR AREA: 81 CARIBOU</b>								





KINBASKET LAKE  
CARIBOU CENSUS

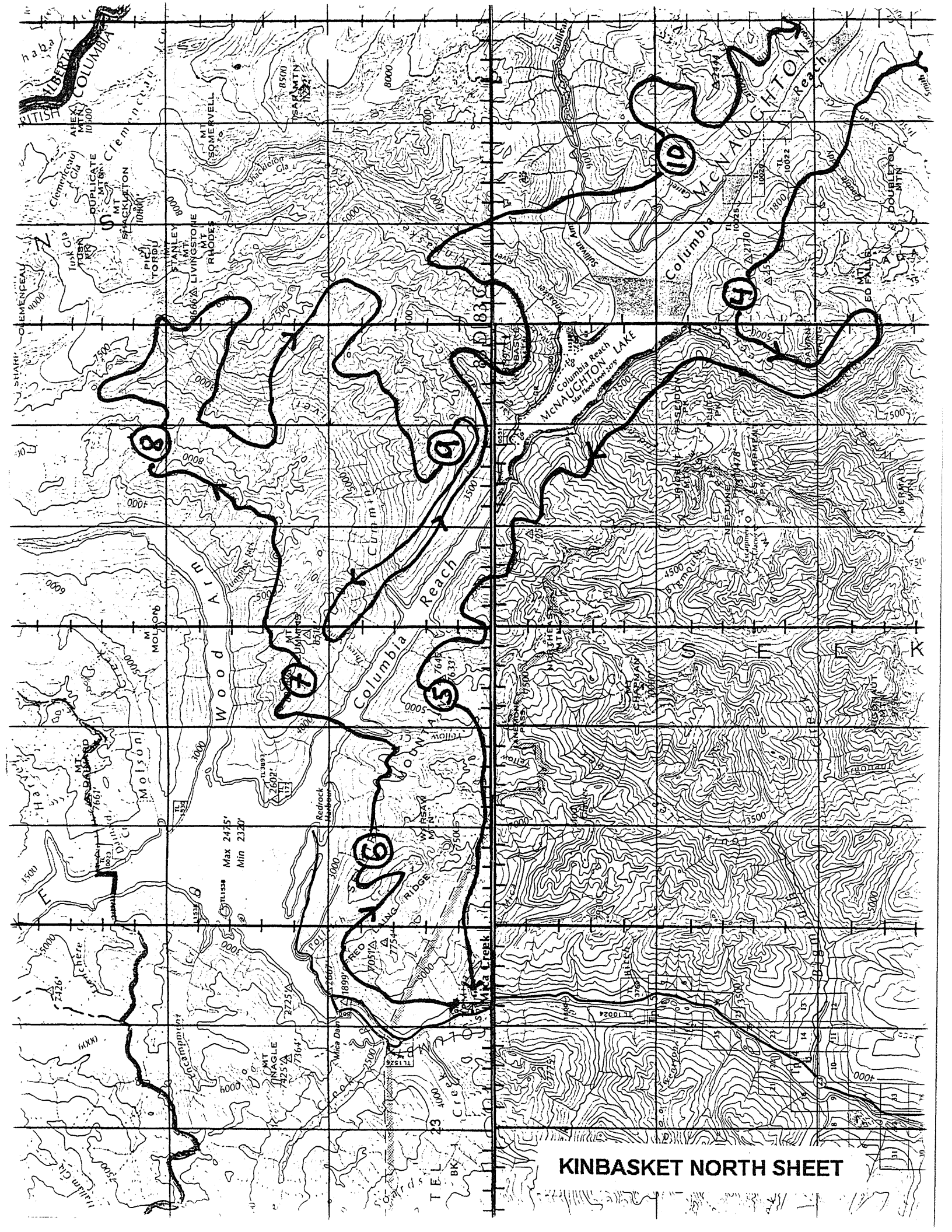
CARIBOU CENSUS							
LOCATION: KINBASKET LAKE							
DATE: MARCH 1, 1995							
OBSERVERS: FLAA/MCCLELLAN/POLSTER							
PILOT: D. WASSIK							
SIGHTING#	ZONE	EASTING	NORTHING	TOTAL	CALF	ADULTS	UNC
1	MH	640	100				4TRACKS
2	MH	540	260	4	1	3	
3	MH	480	340	4		4	
4	MH	330	470	11			*11
5	MH	90	620	5	1	4	
6	MH	30	680				3TRACKS
7	MH	110	730	6		6	
8	MH	250	810	6	2	4	
9	MH	240	640	6	2	4	
10	MH	390	530				2TRACKS
<b>TOTAL</b>				<b>42</b>	<b>6</b>	<b>25</b>	<b>9TRACKS</b>
<b>CALVES/100ADULTS:</b>		<b>24 * DOES NOT INCLUDE 11 UNCLASSIFIED OF SIGHTING #4</b>					
<b>ESTIMATE FOR AREA:51 CARIBOU</b>							



KINBASKET SOUTH SHEET

CENCE 23

ARM BLO



KINBASKET NORTH SHEET