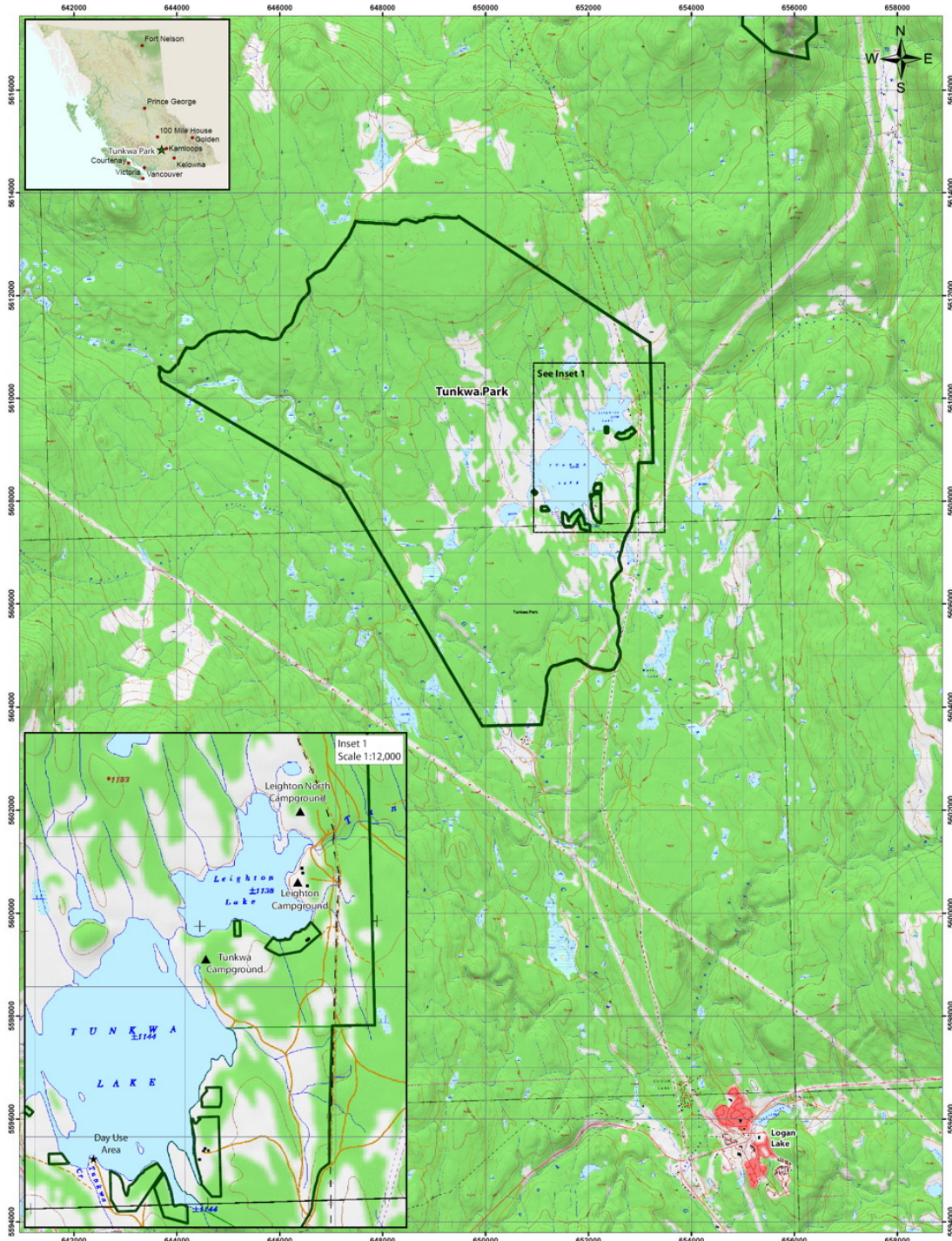


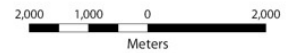
# Map 1

# Tunkwa Provincial Park



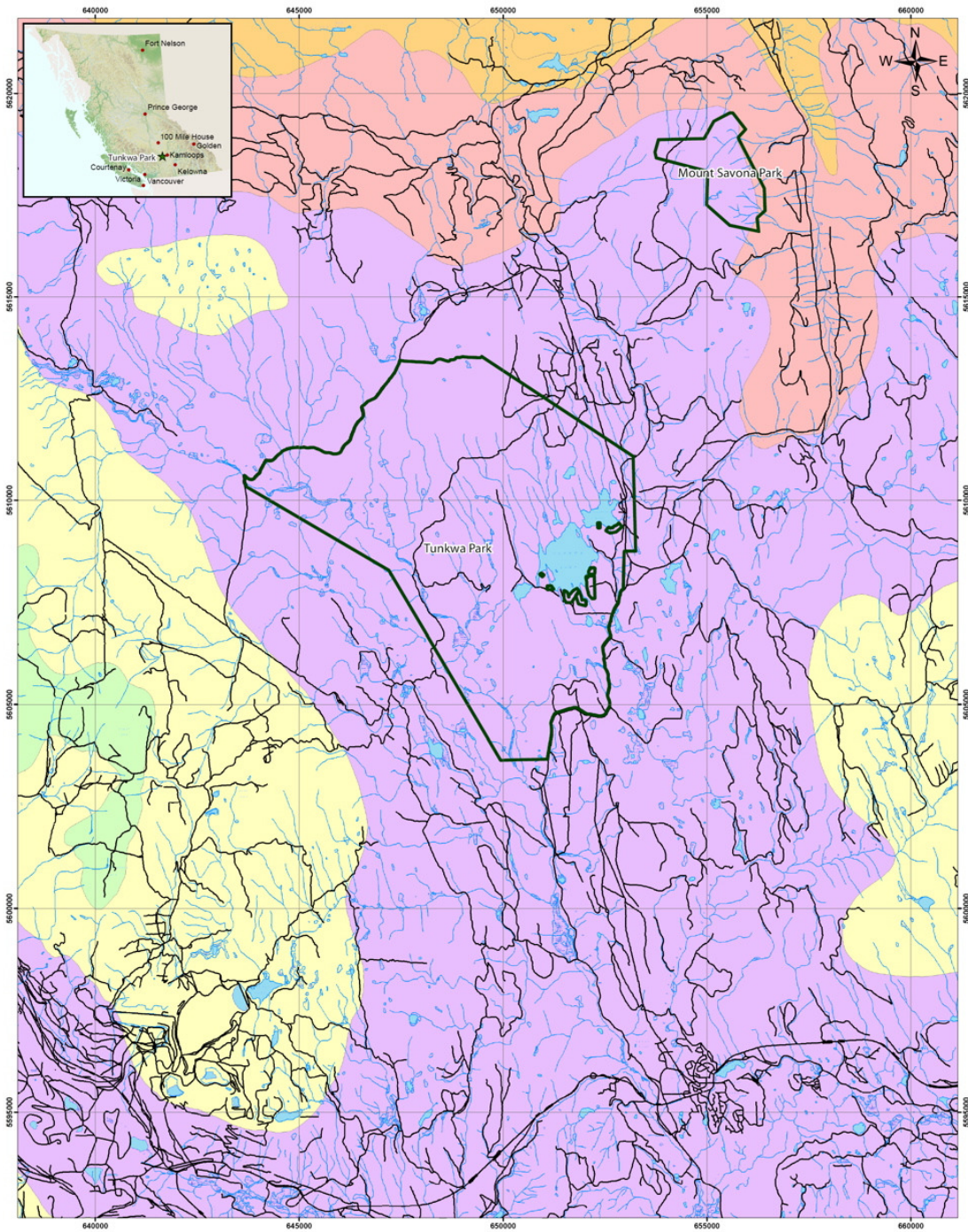
## Legend

- Forested Land
- Non Forested Land
- Water body
- Park Boundary
- Contours (20m)
- Watercourse
- Roads
- Trails

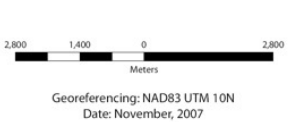


Georeferencing: NAD83 UTM 10N  
 Date: November, 2007

# Tunkwa Provincial Park Biogeoclimatic Subzones



Legend	
	Park Boundary
	TRIM Roads
	TRIM Rivers
	TRIM Water
	TRIM Wetlands
Biogeoclimatic Zones	
	ESSFxc - Engelmann Spruce Sub-alpine Fir very dry cold
	IDFdK1 - Interior Douglas-Fir dry cool Thompson variant
	IDFhx2 - Interior Douglas-Fir very dry hot Thompson variant
	MSxk2 - Montane Spruce very dry cool South Thompson variant
	PPxh2 - Ponderosa Pine very dry hot Thompson variant

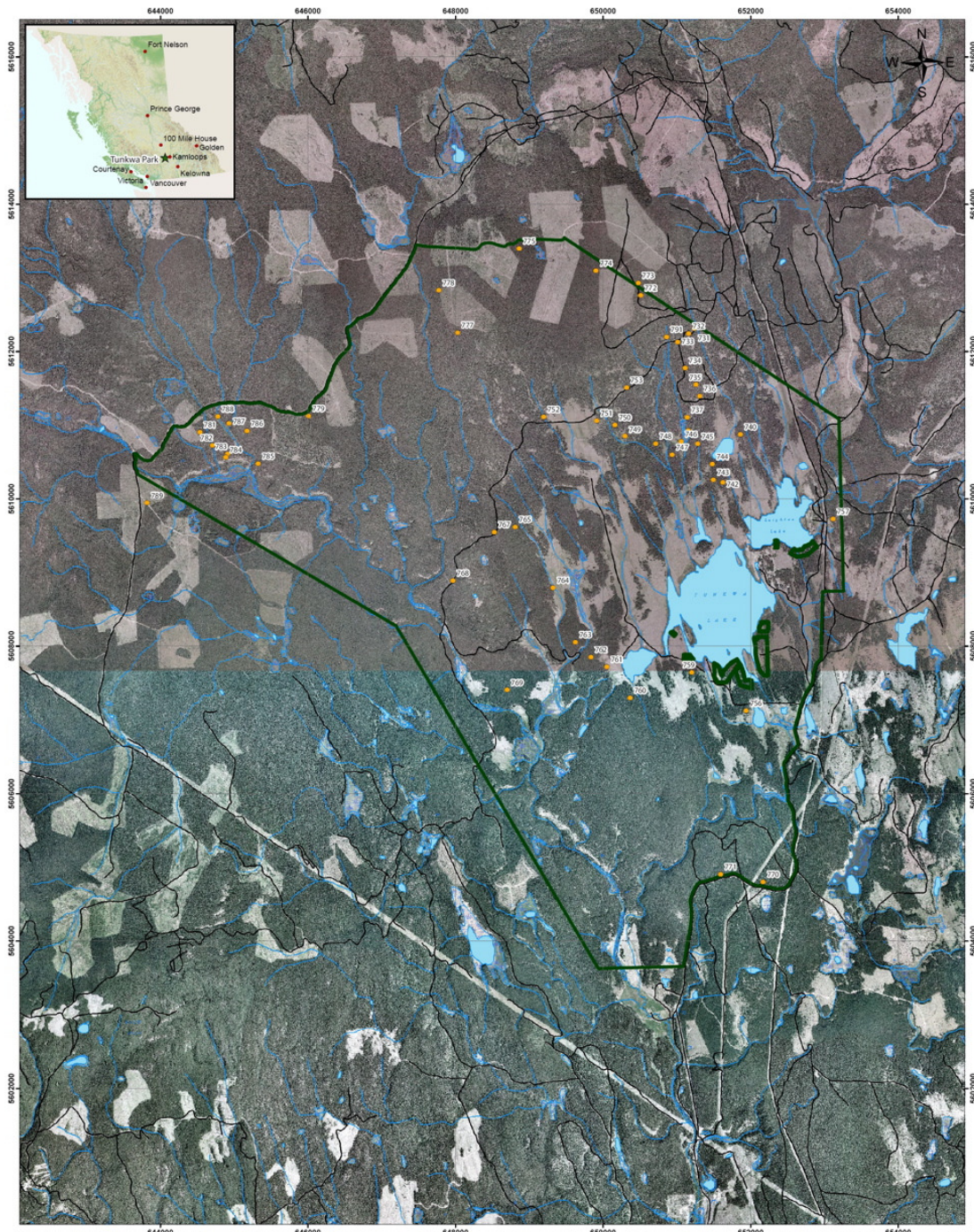


**Data Sources**  
WHSE\_FOREST\_VEGETATION.RES\_BIOGEOCLIMATIC

# Map 3

# Tunkwa Provincial Park Ortho Photo Map

CLOVER POINT  
DATA CENTRAL



**Legend**

- Tunkwa\_waypoints
- TRIM Roads
- TRIM Rivers
- TRIM Water
- TRIM Wetlands

1,500 750 0 1,500  
Meters

Georeferencing: NAD83 UTM 10N  
Date: November, 2007

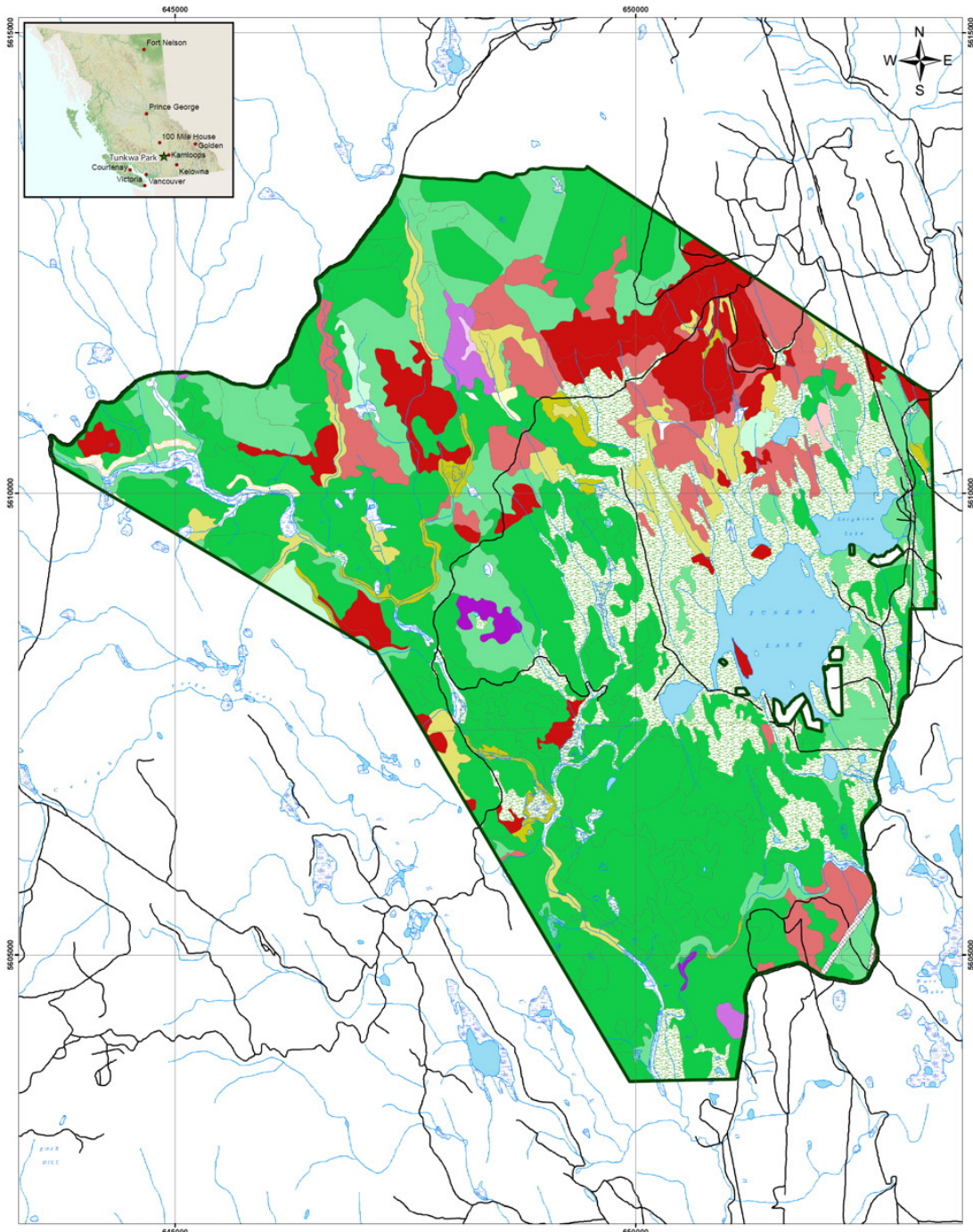
**Data Sources**

British Columbia Imagery WMS 1995-2004 (1m)  
Recce Way Points

# Map 4

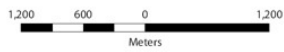
## Tunkwa Provincial Park Leading Tree Species and Percentage of Stand Composition

CLOVER POINT  
GIS CONSULTING



### Legend

Park Boundary	<b>Percent Composition</b>	Douglas-fir	Lodgepole pine
TRIM Roads	Aspen	35 - 49	35 - 49
TRIM Rivers	35 - 49	50 - 81	50 - 81
TRIM Water	50 - 81	82 - 100	82 - 100
TRIM Wetlands	82 - 100	Interior spruce	
Grassland		35 - 49	
Pipeline		50 - 81	
Sagebrush		82 - 100	

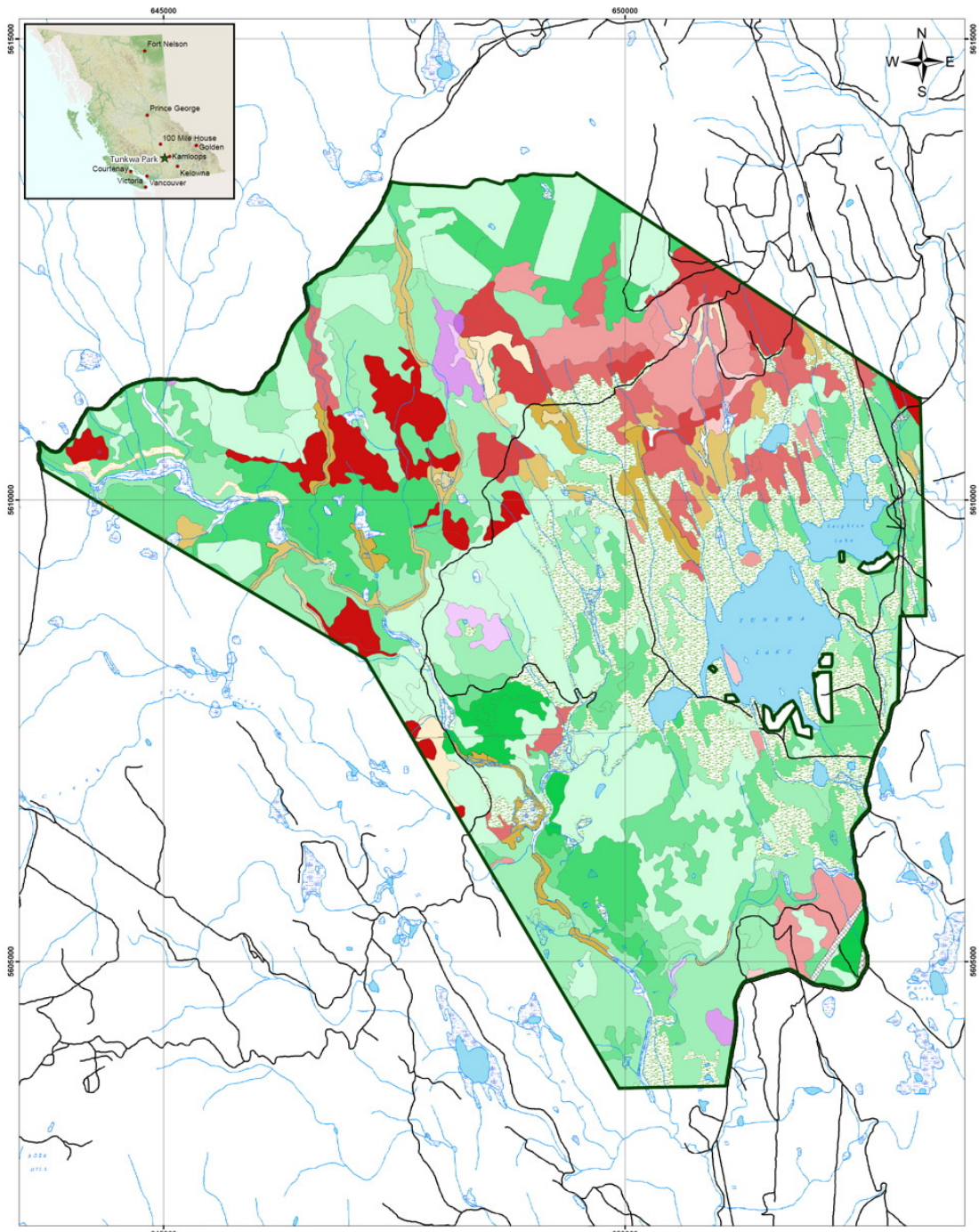


Georeferencing: NAD83 UTM 10N  
Date: November, 2007

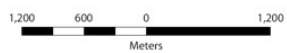
### Data Sources

WHSE\_FOREST\_VEGETATION.VEG\_COMP\_POLY  
WHSE\_FOREST\_VEGETATION.VEG\_COMP\_LYR\_R1\_VW

# Tunkwa Provincial Park Age Class of Leading Species



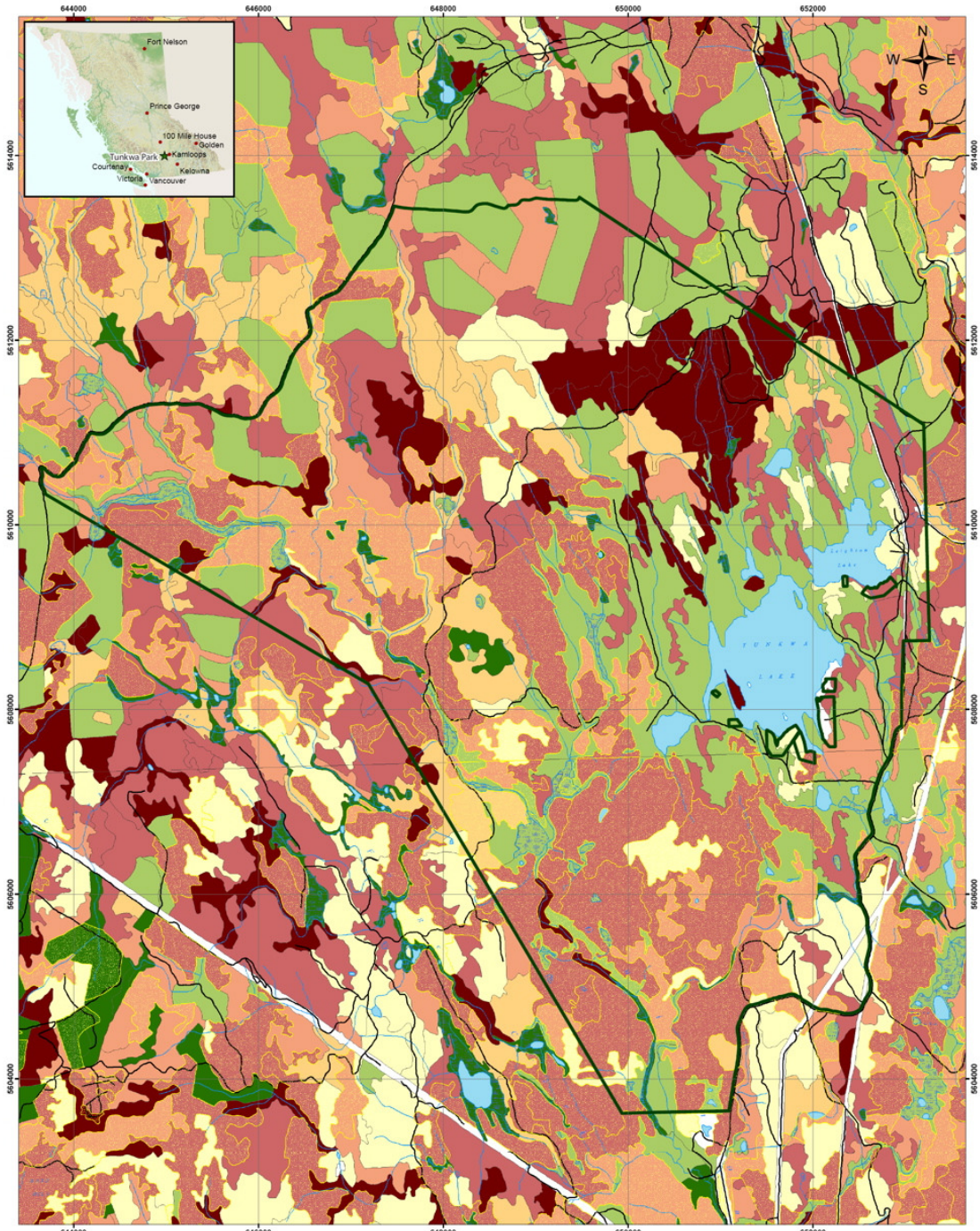
Legend		Age Class	Douglas-fir	Interior spruce	Lodgepole pine
Park Boundary			1-4	1-4	1-4
TRIM Roads			5	5	5
TRIM Rivers		1-4	6	6	6
TRIM Water		5	7	7	7
TRIM Wetlands		6	8-9	8-9	8-9
Grassland		7			
Pipeline		8-9			
Sagebrush					



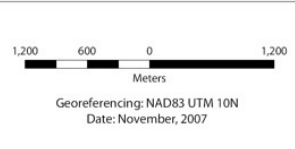
Georeferencing: NAD83 UTM 10N  
Date: November, 2007

**Data Sources**  
 WHSE\_FOREST\_VEGETATION.VEG\_COMP\_POLY  
 WHSE\_FOREST\_VEGETATION.VEG\_COMP\_LYR\_R1\_VW

# Tunkwa Provincial Park Fuel Type Map



Legend		FBP System Fuel Types	
TRIM Roads	C-2 Boreal Spruce	S-1	S-3
TRIM Rivers	C-4 Mature Jack or Lodgepole Pine	O-1b Standing Grass	D-1 Leafless Aspen
TRIM Water	C-3 Immature Jack or Lodgepole Pine	Non Fuel	
TRIM Wetlands	M-2 Boreal Mixedwood - Green		
Pine Dominant	C-7 Ponderosa Pine/Douglas Fir		



Data Sources
WHSE_PARKS.PA_PROTECTED_AREA_POLY
WHSE_FOREST_VEGETATION.VEG_COMP_POLY
WHSE_FOREST_VEGETATION.VEG_COMP_POLY