

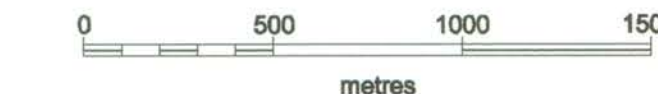
ECOGAT ID 14185-21

33.95616
T323
1997b
Map 21
c.1

DUCKLING CREEK

Fish Habitat and Stream Inventory

SCALE 1:20 000



SYMBOL EXPLANATION

T.R.I.M. TOPOGRAPHY:	STREAM INVENTORY:
Roads	GPS Flight Line
Buildings	Back Channel, Left, Right
Slide Area	Culvert
Treed Swamp	Slumping Bank Start
Marsh	Slumping Bank End
Wooded Area	Slumping Bank Left
	Slumping Bank Right
	Barrier, Probable
	Beaver Dam
	Side Channel
	Side Channel Start
	Side Channel End
	Bedrock - Confined
	Bedrock - Confined Start
	Bedrock - Confined End
	Island, Vegetated
	Bedrock - Outcrop
	Wetlands
	Wetlands - Right Bank
	Wetlands - Left Bank
	Falls Class 1
	Falls Class 2
	Cascades
	Chutes
	Tributary - Left Bank
	Tributary - Right Bank
	Crossing - Bridge
	Crossing - Ford
	Pool - Class 1
	Pool - Class 2
	Pool - Class 3
	Boulder Garden
	Gravel Bar
	Riffle
	Riffle Start
	Riffle End
	Braded Stream
	Reach Break
	Logging
	Upstream Extent
	Downstream Extent
	Left Bank, Right Bank

As an attempt to reduce clutter, Large Organic Debris features (X) (Y) (Z) were left off the maps. These features still remain in the digital file and database.

WATERBODY IDENTIFIER:

VIDEO REFERENCE:

GPS Time Stamp: 08/23/97 Date: 08/23/97
Filename: 082307C-S2 Tape #

AREA OF DRAINAGE:

ROAD PRESENT (not in TRIM):

ROAD LEFT BANK, RIGHT BANK:

KILOMETER MARKER:

CONTOUR INTERVAL 20 METRES
Elevation in Metres above Mean Sea Level

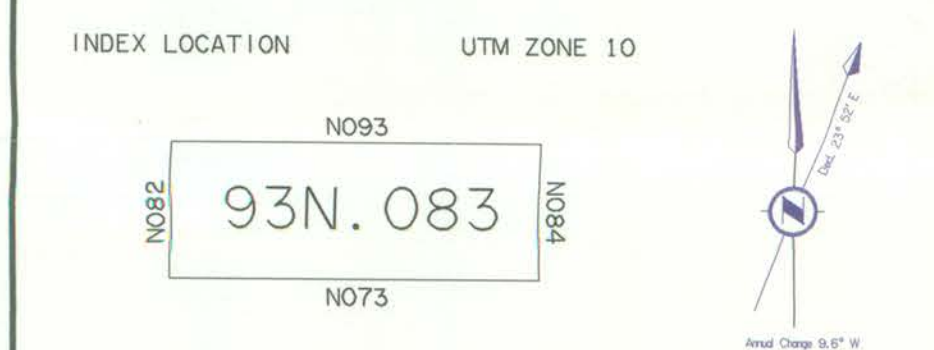
SOURCE:

BASE: TR	STR SYM: INV
LOC: VDC	LK SYM: N/A
HAB: VID	
FISH: N/A	
DATE INV: Summer '97	INV MGMT: OTH

BASE MAP: 093N.083 DATE: 02/09/98
GEODEIC DATUM: NAD 83 COMPILED BY: RTR
SURVEYED BY:



Survey information collected through aerial reconnaissance; locations established with GPS positioning. 3D Differential Correction GPS accuracies do not apply to unmonitored features.



B.C. ENVIRONMENT
LIBRARY
PRINCE GEORGE