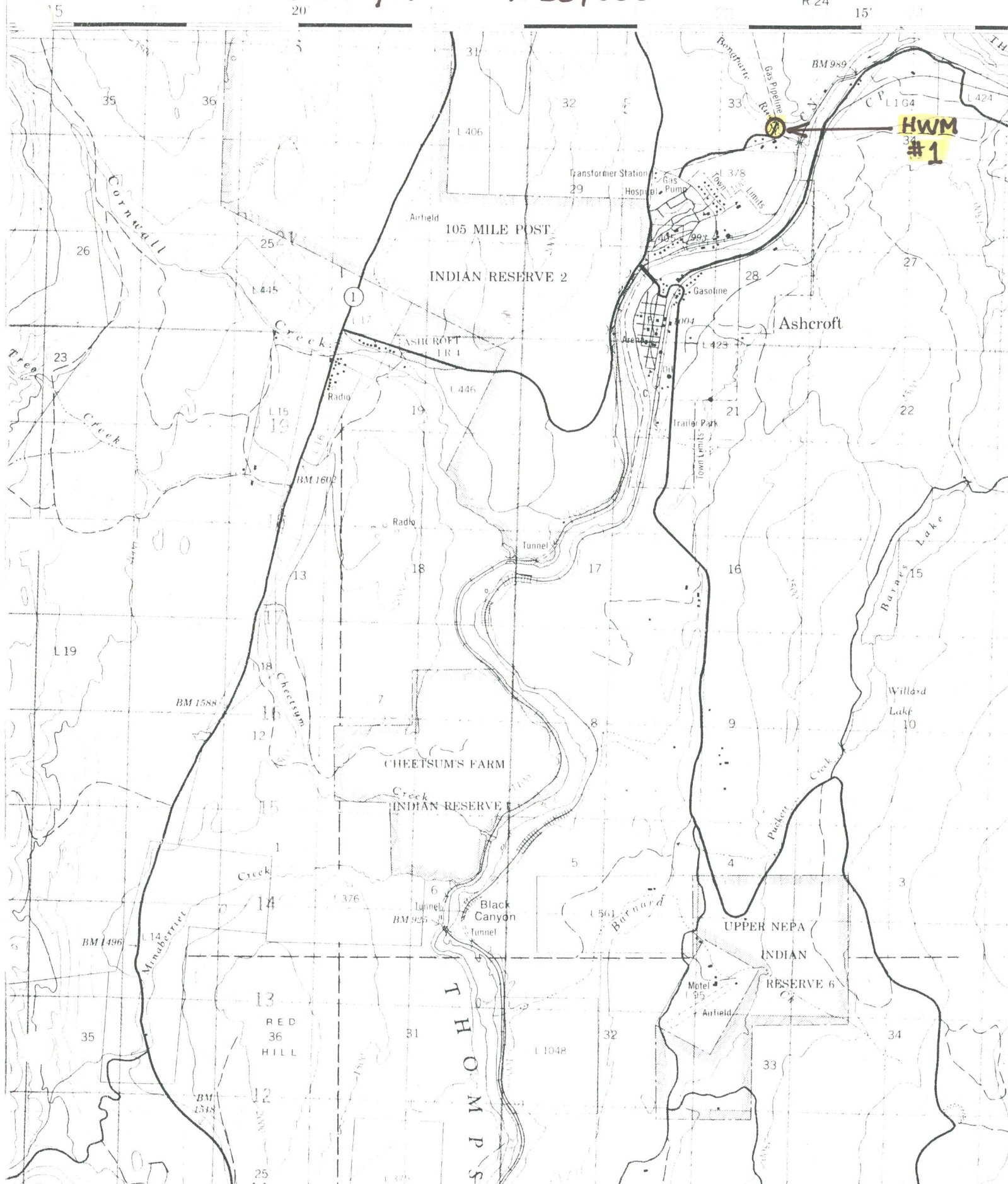


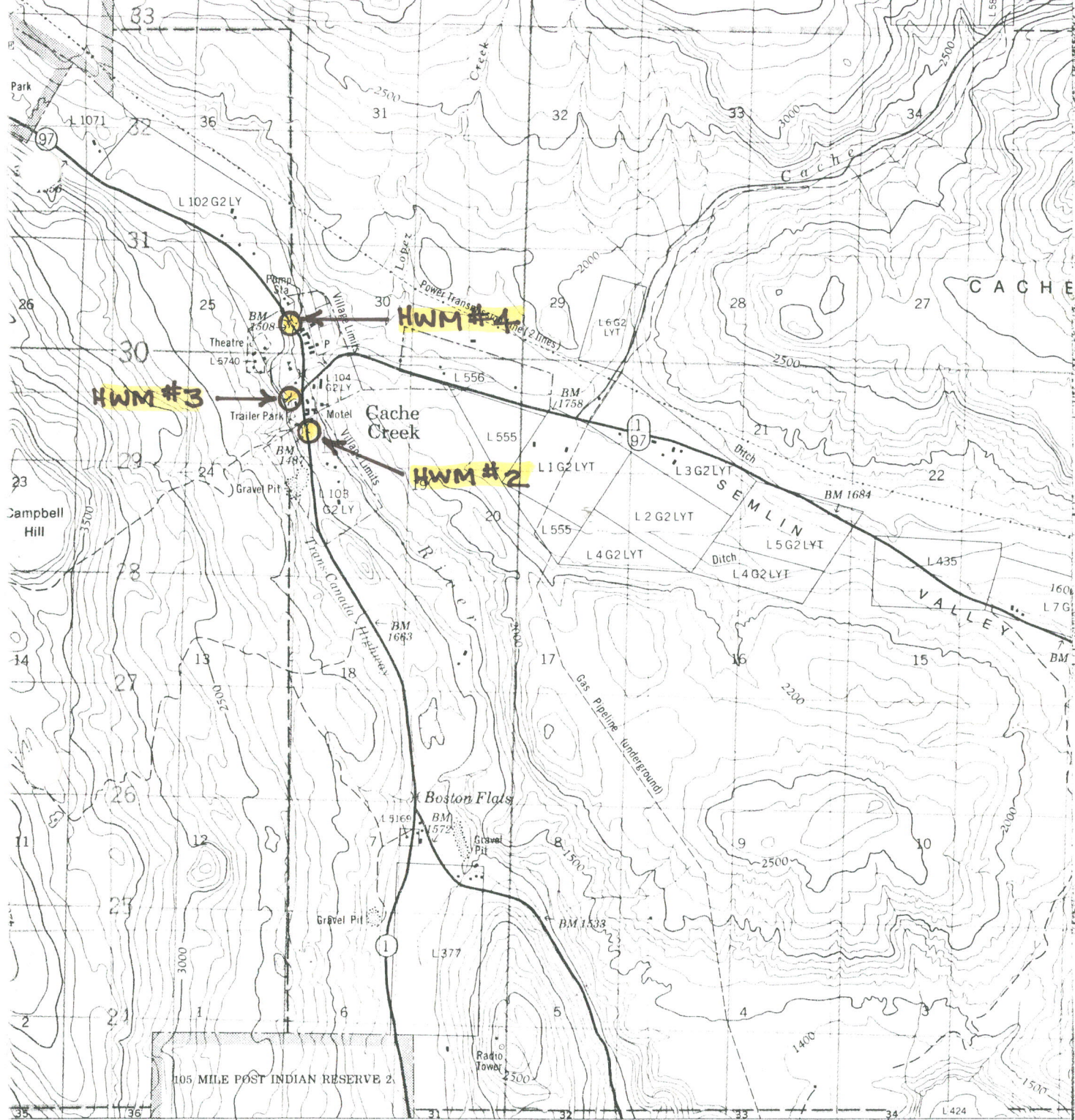
PROJECT 9020 F056
BONA PARTE RIVER
JUNE 1990 HIGHWATER MARKS

CANADA

92 I/11 1:50,000

R 24 15'





92 I/14

1:50,000

CACHE CREEK

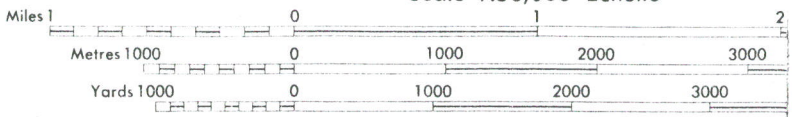
BRITISH COLUMBIA

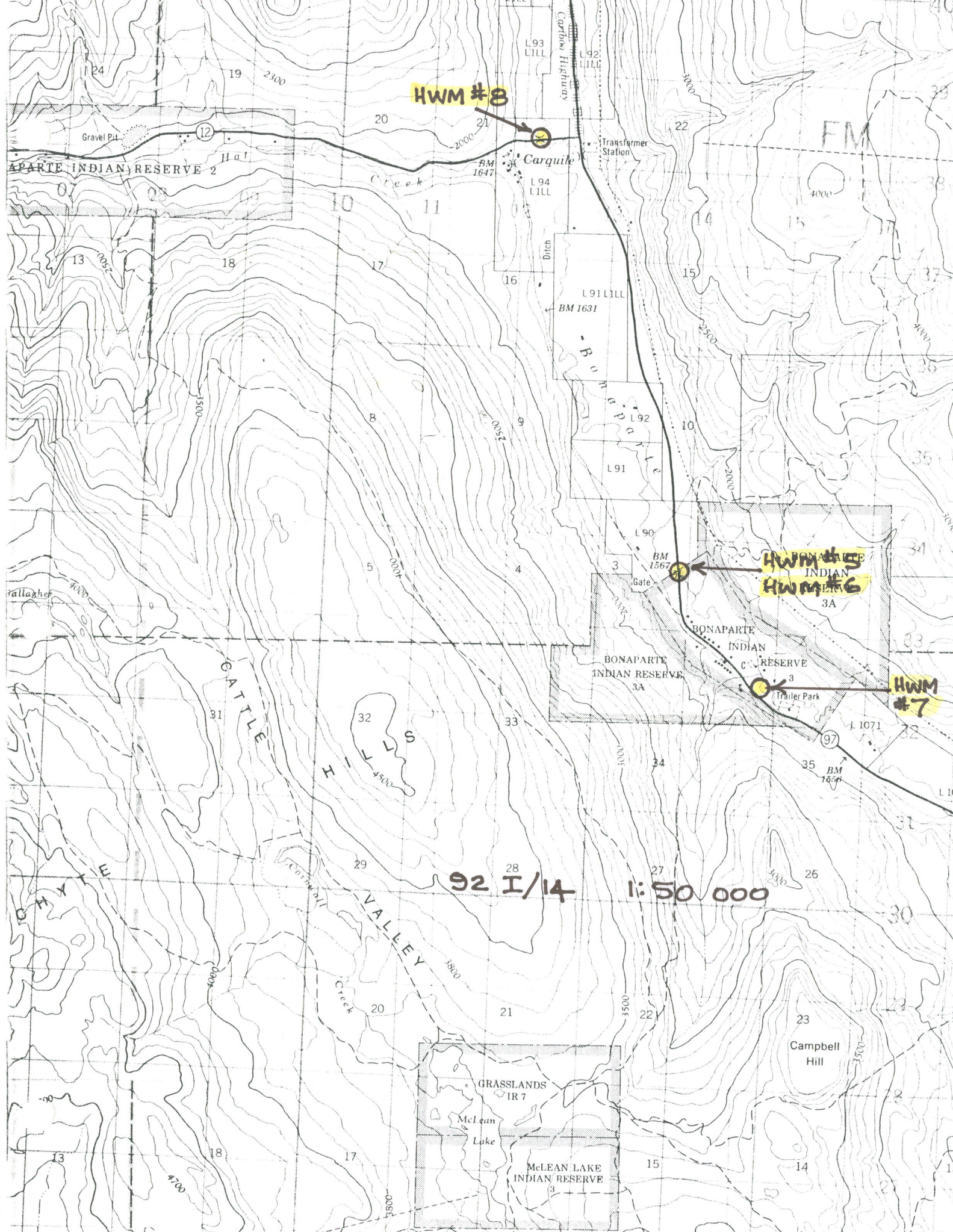
WEST OF SIXTH MERIDIAN - OUEST DU SIXIÈME M

Scale 1:50,000 Échelle

Routes:

pavée, toute saison.....	dual highway 2 chaussées séparées	more than 2 lanes plus de 2 voies
pavée, toute saison.....	2 lanes 2 voies	less than 2 lanes moins de 2 voies
gravier aggloméré, toute saison.....	2 lanes or more 2 voies ou plus	less than 2 lanes moins de 2 voies
de gravier, temps sec et rues hors classe.....		
de terre.....		
ser	rcée ou portage	



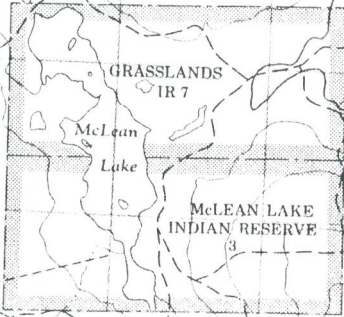


HWM #8

HWM #5
HWM #6

HWM #7

92 I/14 1:50,000

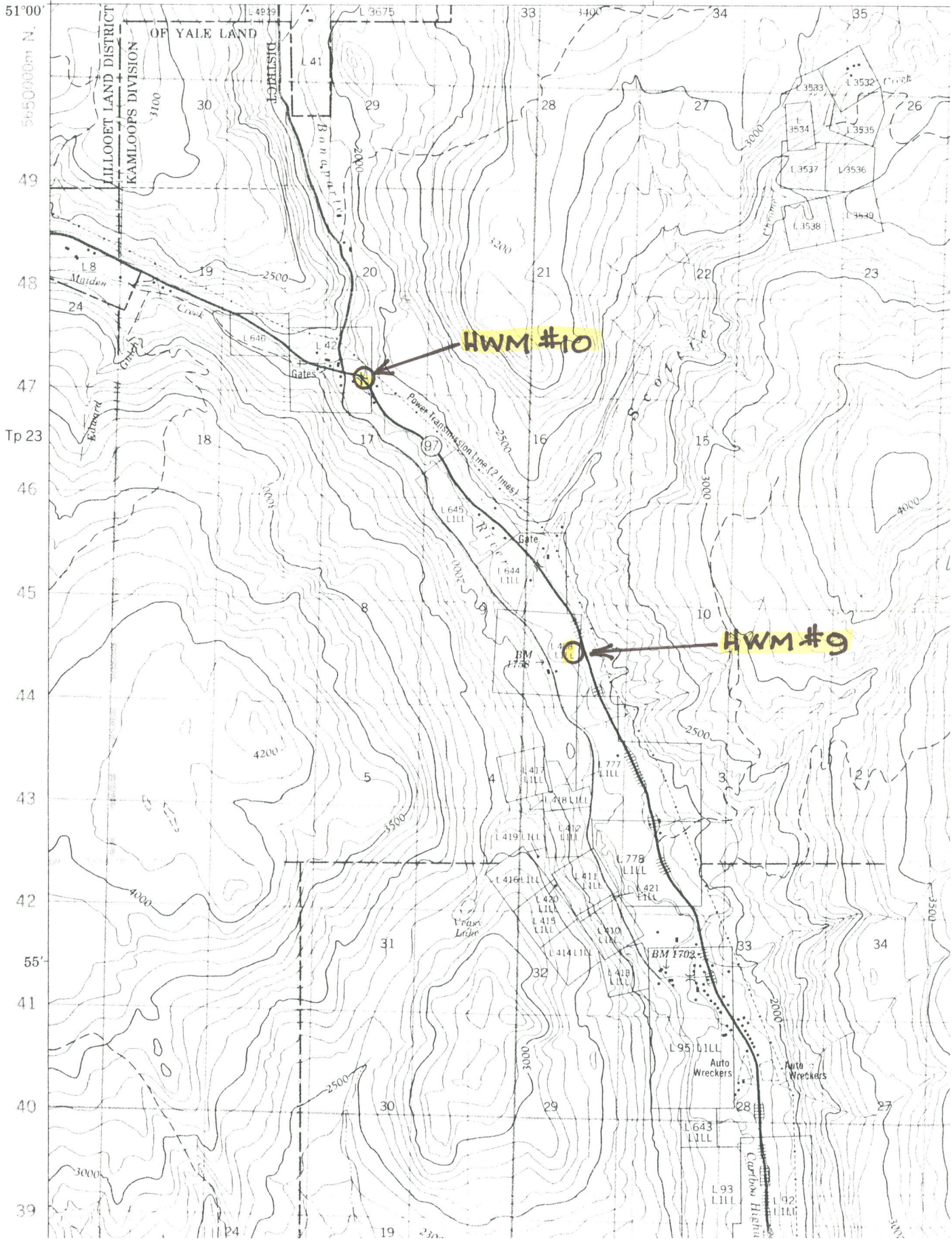


92-I/14 R 26

1:50,000

121°30'

R 25



Bonaparte River H.W.M.s



H.W.M. #1 Bonaparte River Bridge at Ashcroft, upstream side.

Elevation of Reference Point	300.861
Difference to HWM	- 3.380
Elevation of HWM	<u>297.481</u>

Bonaparte River H.W.M.s



H.W.M. #2 Hwy#1 Bridge at south end of Cache Creek, northeast abutment.

Elevation of Reference Point	453.355
Difference to HWM	- 2.910 (29/05/90)
Elevation of HWM	<u>450.445</u>

Bonaparte River H.W.M.s



H.W.M. #3 Middle of Cache Creek behind Oasis Hotel.

Elevation of Reference Point	456.765
Difference to HWM	- 2.950
Elevation of HWM	<u>453.815</u>

Bonaparte River H.W.M.s



H.W.M. #4 Hwy.#97 Bridge at north end of Cache Creek.

Elevation of Reference Point	459.395
Difference to HWM	- 2.590
Elevation of HWM	<u>456.805</u>

Bonaparte River H.W.M.s



H.W.M. #5 Hwy.#97 Bridge at north boundary of Indian Reserve,
(first bridge north of Cache Creek.)

Elevation of Reference Point	476.419
Difference to HWM	- 1.65
Elevation of HWM	<u>474.769</u>

Bonaparte River H.W.M.s



H.W.M. #6 Power pole @ first bridge north of Cache Creek,
20m. north of H.W.M. #5.

Elevation of Reference Point 474.906

Difference to HWM 0.00

Elevation of HWM 474.906

Bonaparte River H.W.M.s



H.W.M. #7 Wooden bridge @ side road east of Hwy.#97, approx.
200m. south of Bonaparte I.R. administration buildings.

Elevation of Reference Point 469.719

Difference to HWM - 0.140

Elevation of HWM 469.579

Bonaparte River H.W.M.s



H.W.M. #8 First Hwy.#12 bridge, top of decking on north side.

Elevation of Reference Point 498.879

Difference to HWM - 1.64

Elevation of HWM 497.239

Bonaparte River H.W.M.s



H.W.M. #9 At Crawford's place in Carquile, bottom of orange line on fence post, at hay bales south of pig pen.

Elevation of Reference Point 509.281

Difference to HWM + 0.180

Elevation of HWM 509.461

Bonaparte River H.W.M.s



H.W.M. #10 Old Hwy.#97 Bridge just south of Loon Lake turnoff,
east of new bridge.

Elevation of Reference Point 541.504

Difference to HWM - 0.720

Elevation of HWM 540.784