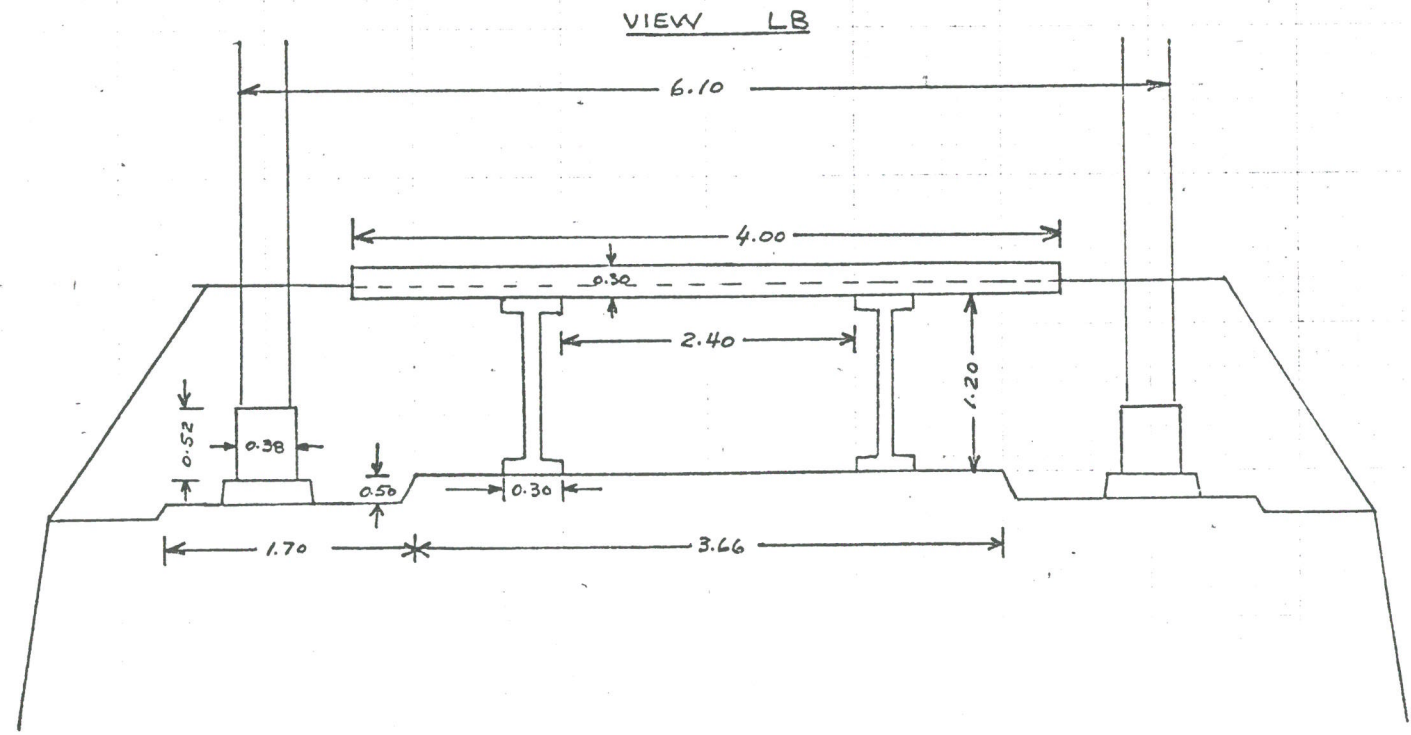
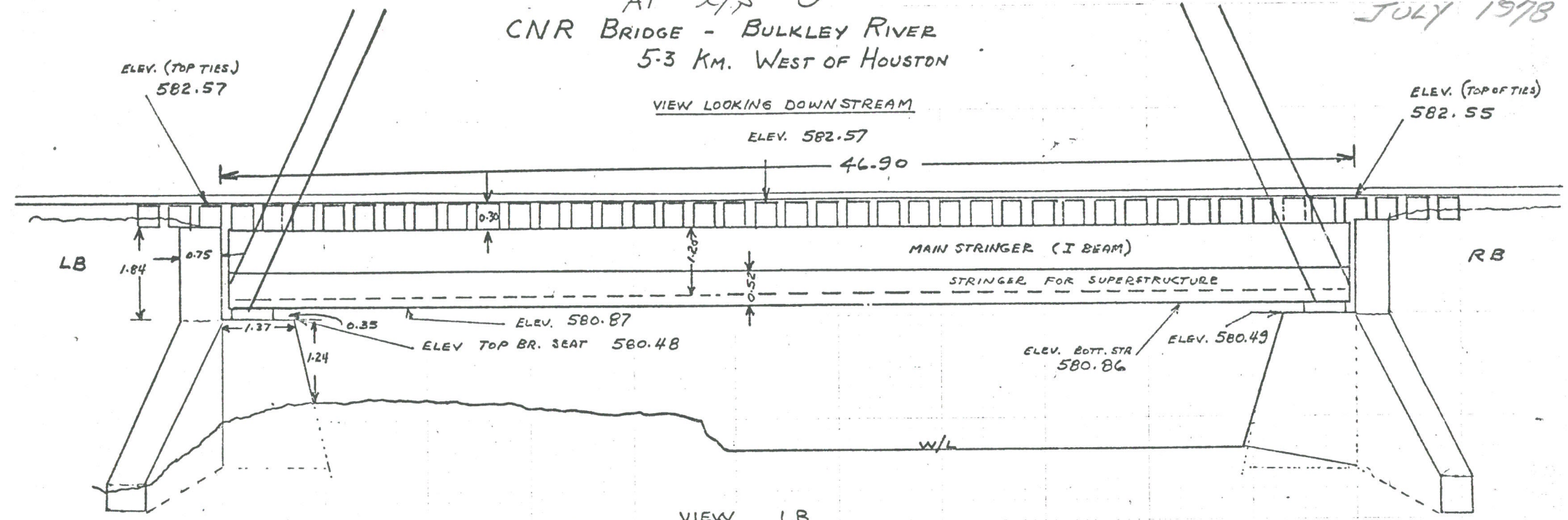


AT X/S 0
 CNR BRIDGE - BULKLEY RIVER
 5-3 KM. WEST OF HOUSTON

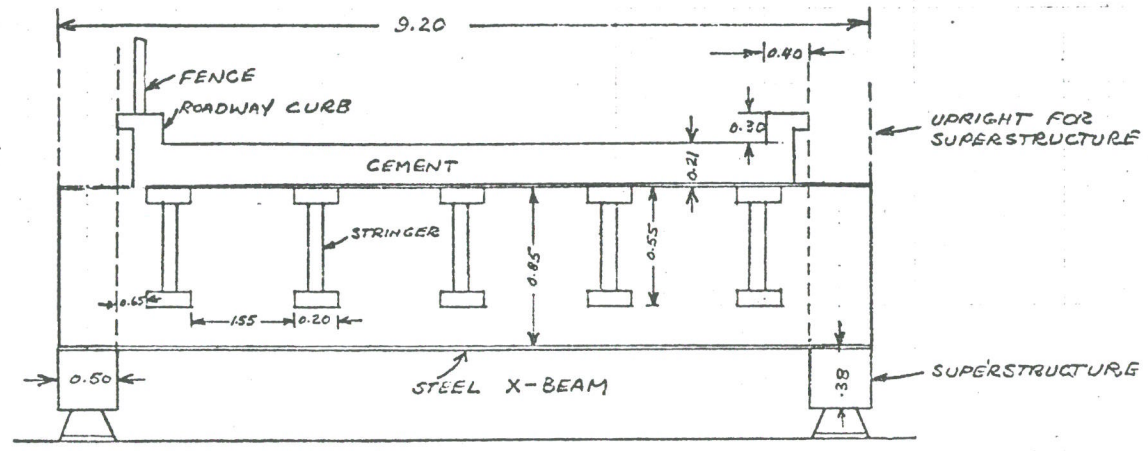
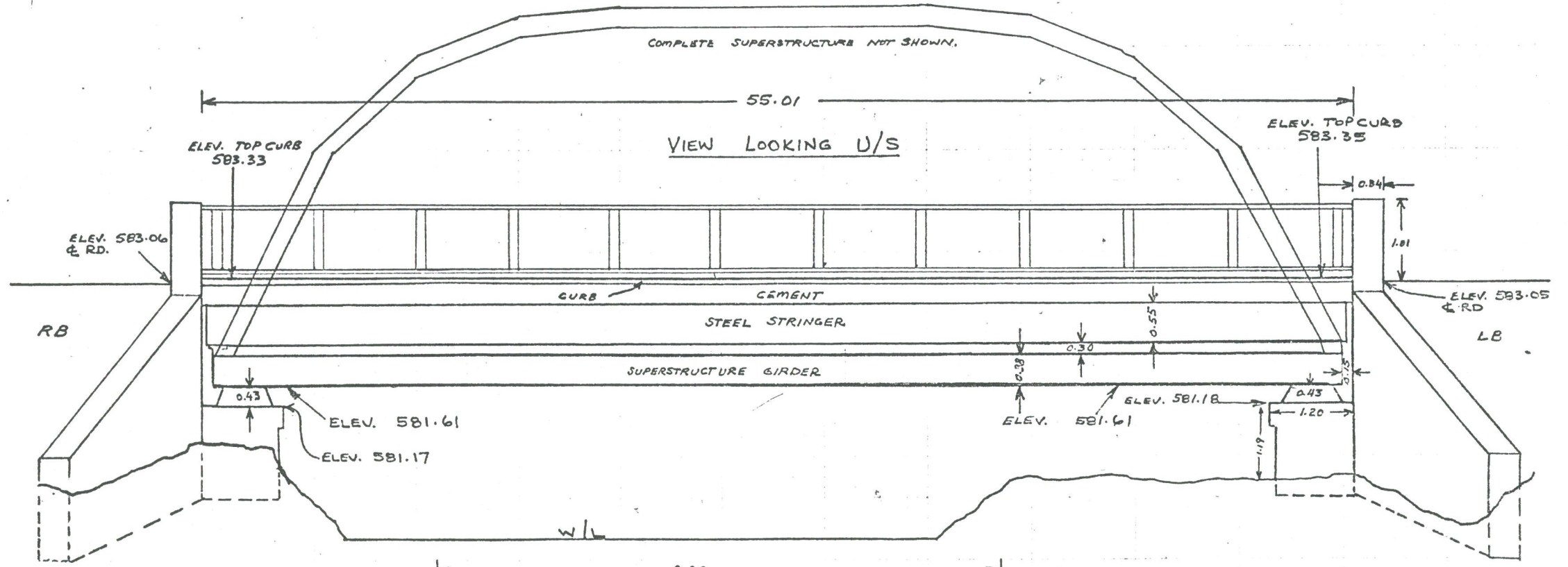
PROJECT 76FDC 18
 JULY 1978



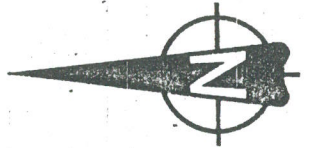
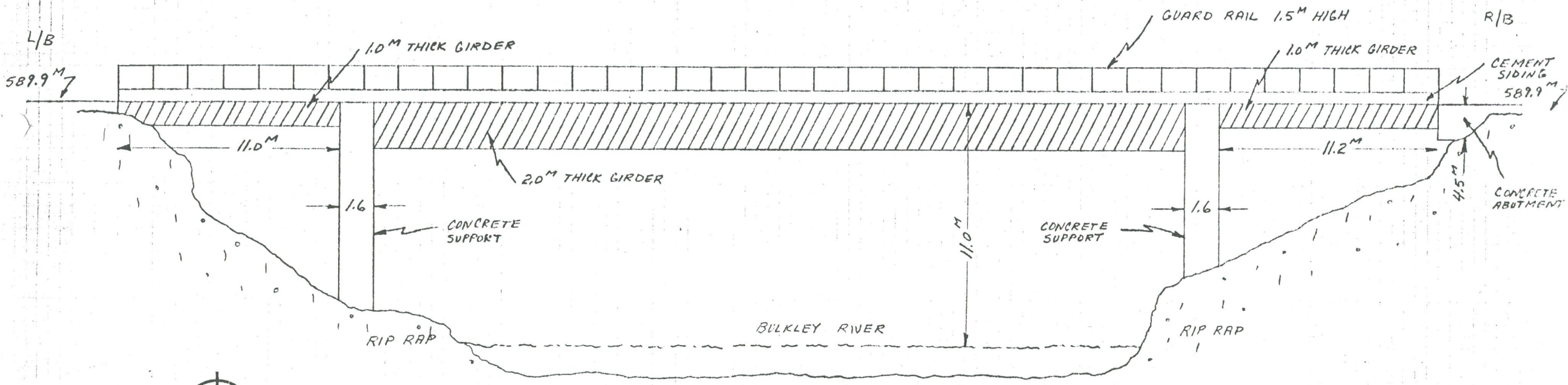
NOTE:
 This information is considered historical as it represents channel conditions and configuration at the time of the survey only. User must accept responsibility of ensuring that the accuracy and completeness of provided data is suitable for the needs of the project or study. It is provided "as is" without warranty of any kind, whether express or implied. Under no circumstances will the Government of British Columbia be liable to any person or business entity for any direct, indirect, special, incidental, consequential, or other damages based on any use of this information.

NOT TO SCALE
 ELEVATIONS AND MEASUREMENTS
 ARE IN METRES.

AT 2/5 1
 HWY 16 BRIDGE - BULKLEY RIVER @ HOUSTON.
 5.3 KM WEST OF TOWNSITE



VIEW L/B



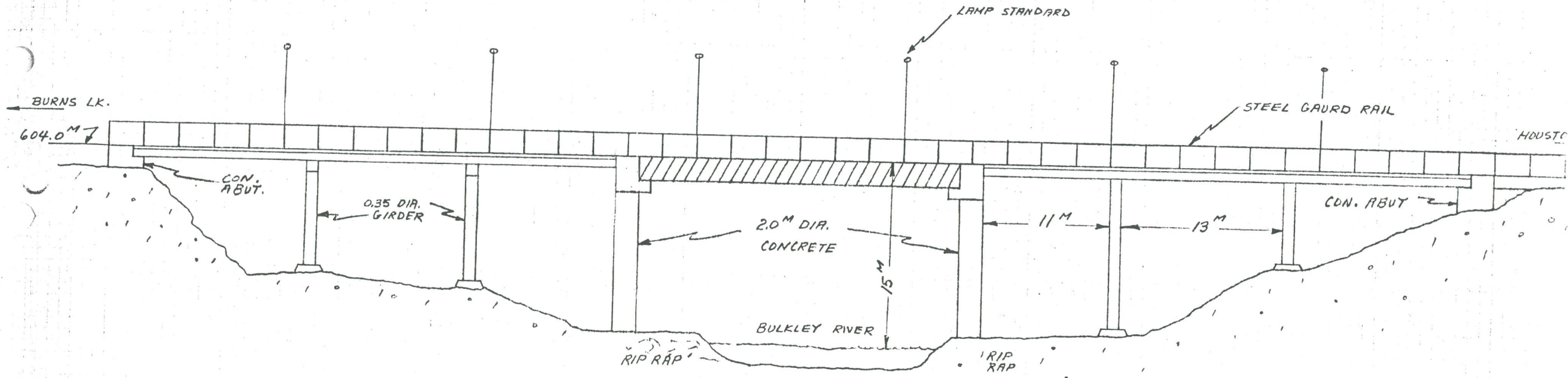
LOG HAUL BRIDGE OVER BULKLEY R.
 VIEW LOOKING DOWNSTREAM
 AT X/S 3 -

OVERALL LENGTH 60
 WIDTH 6.0

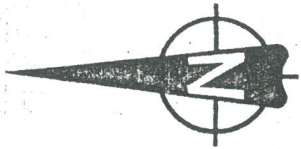
NOT DRAWN TO SCALE

ALL MEASUREMENTS METRIC

JULY 1978



NOTE: BRIDGE VIEW ONLY
OVER BULKLEY R.



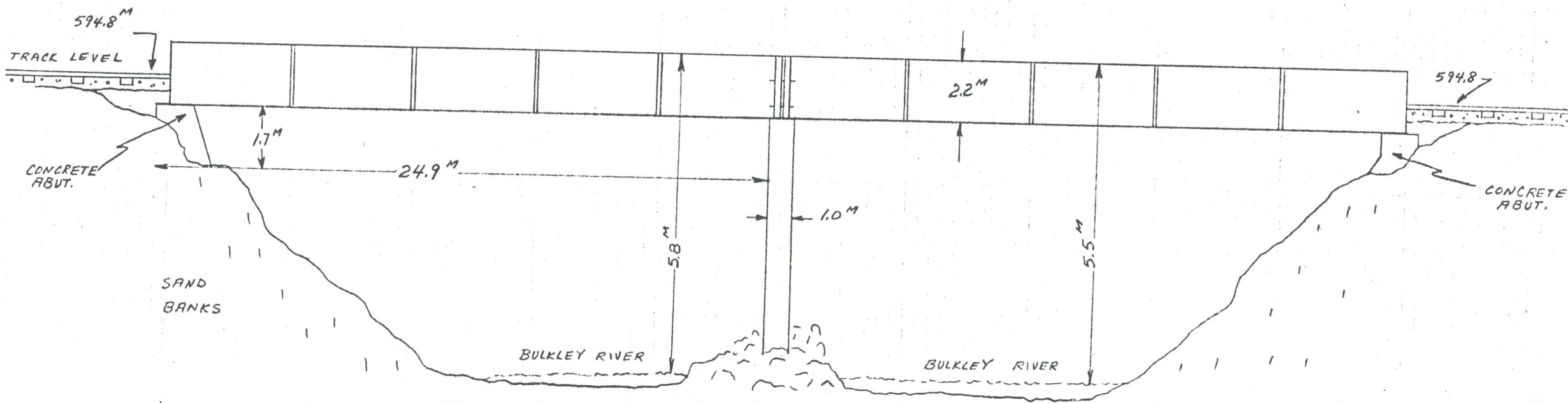
HWY 16 BRIDGE OVER BULKLEY R.
 VIEW LOOKING UPSTREAM
 AT X/S 15 + 15-1

OVERALL LENGTH 123.5 M
 WIDTH 13.1 M

NOT TO SCALE

ALL MEASUREMENTS METRIC

JULY 1978



CN RAILWAY BRIDGE OVER BULKLEY R.

VIEW LOOKING DOWNSTREAM

AT 24/5 17418

OVERALL LENGTH 50'
WIDTH (APPROX.) 3.0'

NOT TO SCALE

ALL MEASUREMENTS METRIC