

NANAIMO RIVER PROJECT 83FDC15 HIGH WATER MARKS NOVEMBER 1983

1.	HEAD	NANAIMO HIGH WATER MARKS 1983		83FDC15		
2.	ZERO	1-998			ELEV.	
3.	ENTC	101	0.0	0.0	2.684	METRES HWM 101
4.	ENTC	102	0.0	0.0	3.098	HWM 102
5.	ENTC	103	0.0	0.0	4.136	HWM 103
6.	ENTC	104	0.0	0.0	4.392	HWM 104
7.	ENTC	105	0.0	0.0	4.927	HWM 105
8.	ENTC	106	0.0	0.0	5.367	HWM 106
9.	ENTC	107	0.0	0.0	5.606	HWM 107
10.	ENTC	108	0.0	0.0	6.198	HWM 108
11.	ENTC	109	0.0	0.0	6.696	HWM 109
12.	ENTC	110	0.0	0.0	6.493	HWM 110
13.	ENTC	111	0.0	0.0	6.532	HWM 111
14.	ENTC	112	0.0	0.0	5.534	HWM 112
15.	ENTC	113	0.0	0.0	7.254	HWM 113
16.	ENTC	114	0.0	0.0	7.542	HWM 114
17.	ENTC	115	0.0	0.0	7.843	HWM 115
18.	ENTC	116	0.0	0.0	8.260	HWM 116
19.	ENTC	117	0.0	0.0	9.212	HWM 117
20.	ENTC	118	0.0	0.0	10.285	HWM 118
21.	ENTC	119	0.0	0.0	11.875	HWM 119
22.	ENTC	120	0.0	0.0	12.731	HWM 120
23.	ENTC	121	0.0	0.0	12.588	HWM 121
24.	ENTC	122	0.0	0.0	13.039	HWM 122
25.	ENTC	123	0.0	0.0	14.081	HWM 123
26.	ENTC	124	0.0	0.0	13.990	HWM 124
27.	ENTC	125	0.0	0.0	15.136	HWM 125
28.	ENTC	126	0.0	0.0	16.551	HWM 126
29.	ENTC	127	0.0	0.0	18.231	HWM 127
30.	ENTC	128	0.0	0.0	19.805	HWM 128
31.	ENTC	129	0.0	0.0	19.842	HWM 129
32.	ENTC	130	0.0	0.0	20.206	HWM 130
33.	ENTC	131	0.0	0.0	20.546	HWM 131
34.	ENTC	132	0.0	0.0	21.106	HWM 132
35.	ENTC	133	0.0	0.0	23.029	CUN. FLOOR RECORD
36.	ENTC	134	0.0	0.0	14.794	STAFF TO MCBLD.

NOTE:

This information is considered historical as it represents channel conditions and configuration at the time of the survey only. User must accept responsibility of ensuring that the accuracy and completeness of provided data is suitable for the need of the project or study. It is provided "as is" without warranty of any kind, whether express or implied. Under no circumstances will the Government of British Columbia be liable to any person or business entity for any direct, indirect, special, incidental, consequential, or other damages based on any use of this information.

NANAIMO RIVER

ANNUAL PEAK FLOW DATA AS OBTAINED FROM MACMILLAN FLOEDEL PUMPHOUSE
AT CASSIDY. C.F.S. RELATED TO FEDERAL GAUGE No. 8 HR 034 LOCATED
APPROXIMATELY 1/2 MILE UPSTREAM.

YEAR	DATE	C.F.S.	MAC/PLO ELEV.	GEODETIC ELEV. (FEET)
1955	NOV. 4	40,500	178.30(-109.45)	68.85
1961	JAN. 15	45,000	177.90 "	68.45
1965	DEC. 4	10,200		
1966	DEC.18	17600		
1967	DEC. 24	11,600		
1968	JAN. 19	26,000		
1969	DEC. 22	7,850		
1970	DEC. 7	8,725		
1971	FEP. 14	13,000		
1972	DEC. 26	24,200		
1973	DEC. 16	21,020		
1974	JAN. 16	32,400	178.00 "	68.55
1975	NOV. 13	18,160		
1976	DEC. 27	6,274		
1977	NOV. 1	11,490		
1978	NOV. 18	6,240		
1979	DEC. 17	26,840		
1980	DEC. 26	34,326	178.00 "	68.55
1981	OCT. 31	20,514		
1982	DEC. 16	11,870		
1983	FEP. 12	29,000	177.10 "	67.65
1983	NOV. 15	30,500	177.30 "	67.85

GEODETIC ELEVATION OF PUMPHOUSE FLOOR LEVEL (CONTROL ELEVATION) AT
GAUGE : 75.554 feet.

HIGH 2200hrs 83/11/15

177-109.45: 67.55
(67.90) G.S.C.

176 " 66.55

175 " 65.55

174 " 64.55

173 " 63.55

172

171

170 " 60.55
Low 1600hrs 83/11/15

170.05
(60.60) G.S.C.

169 "

STEVENS WATER LEVEL RECORDER - TYPE F

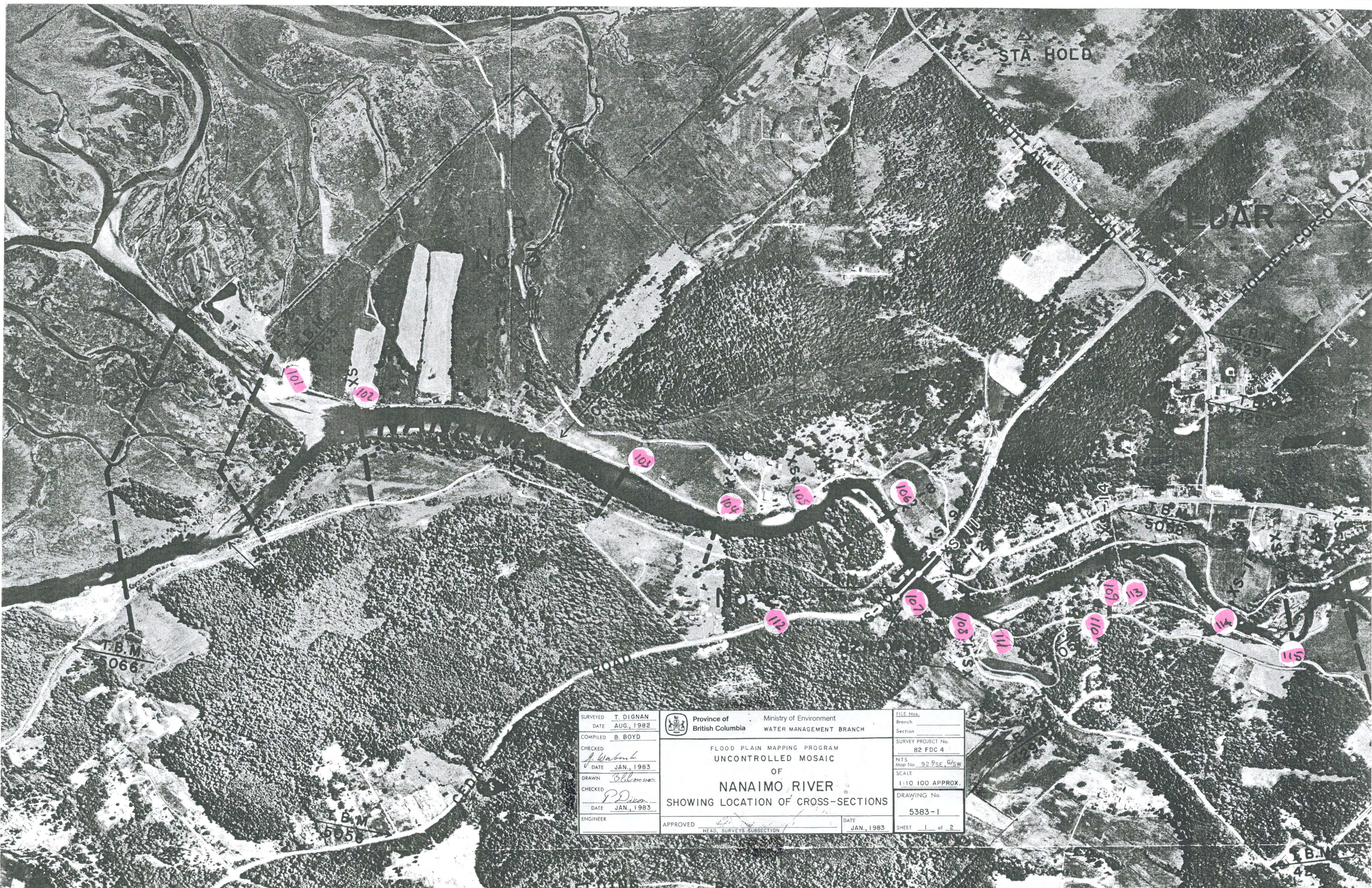
CANADIAN
CHARTING AND SURVEYING LTD.
OTTAWA

LD7-R (F-2)

Mac/Bio Recorder

Their Ref = floor level 185' - 106' = 79.00'

Actual floor level = 75.554' (G.S.C.)



STA. HOLD

EDAR

T.B.M.
5066

T.B.M.
5056

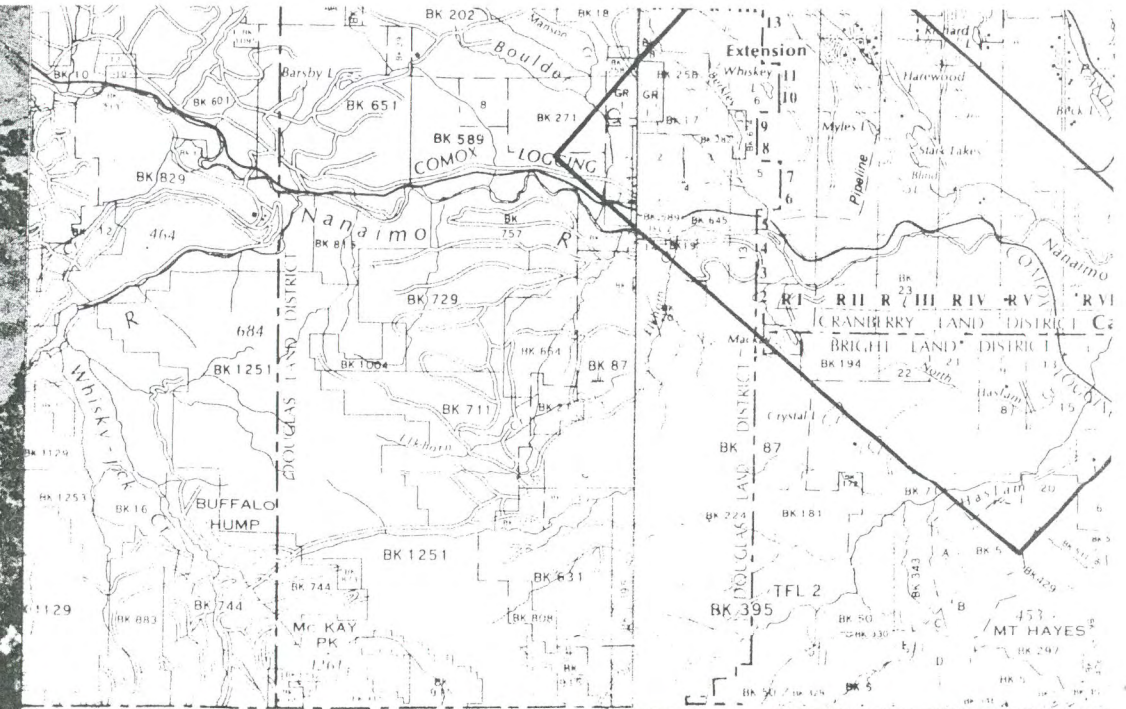
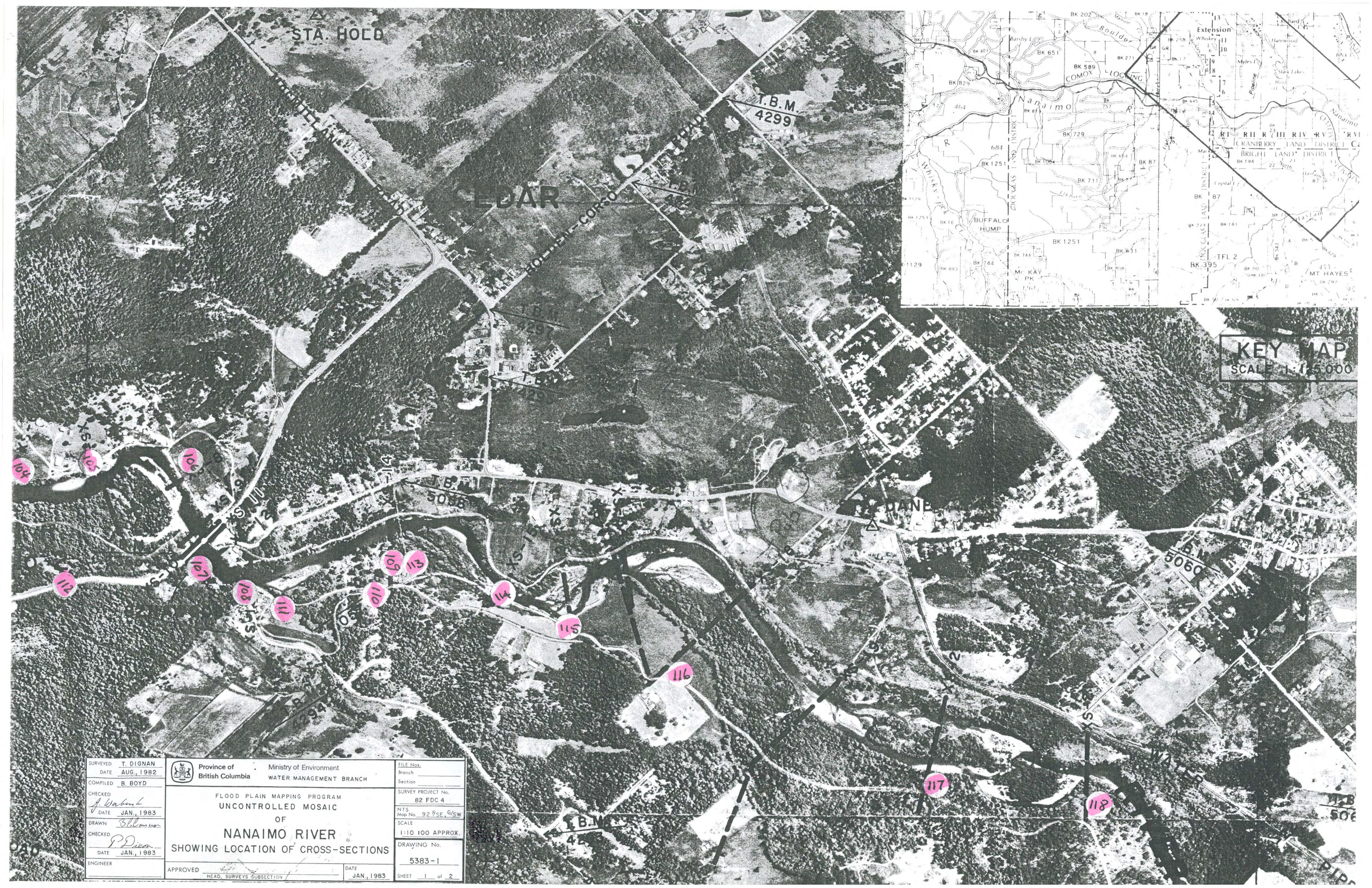
T.B.M.
42

SURVEYED T. DIGNAN
 DATE AUG., 1982
 COMPILED B. BOYD
 CHECKED *J. Wabank*
 DATE JAN., 1983
 DRAWN *B. Blomquist*
 CHECKED *P. Dixon*
 DATE JAN., 1983
 ENGINEER


Province of British Columbia
 Ministry of Environment
 WATER MANAGEMENT BRANCH
 FLOOD PLAIN MAPPING PROGRAM
 UNCONTROLLED MOSAIC
 OF
NANAIMO RIVER
 SHOWING LOCATION OF CROSS-SECTIONS

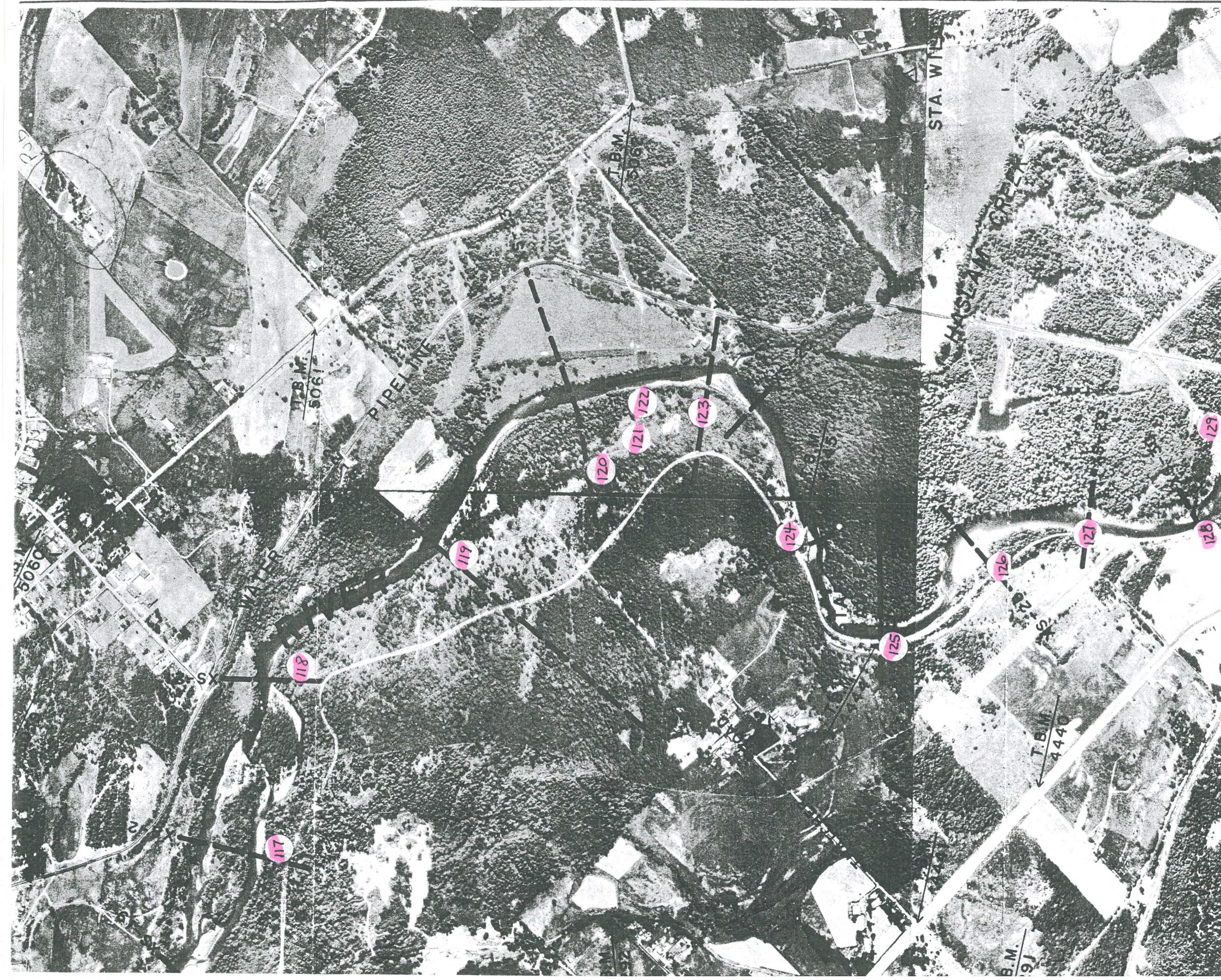
FILE No.
 Branch
 Section
 SURVEY PROJECT No.
 82 FDC 4
 NTS
 Map No. 92 FSE, G/SW
 SCALE
 1:10 100 APPROX.
 DRAWING No.
 5383-1
 SHEET 1 of 2

APPROVED _____ DATE JAN., 1983
 HEAD, SURVEYS SUBSECTION



KEY MAP
SCALE 1:125,000

SURVEYED DATE AUG., 1982	 Province of British Columbia	Ministry of Environment WATER MANAGEMENT BRANCH	FILE Nos. Branch Section
COMPILED B. BOYD			SURVEY PROJECT No. 82 FDC 4
CHECKED <i>J. Wabon</i> DATE JAN., 1983	FLOOD PLAIN MAPPING PROGRAM UNCONTROLLED MOSAIC OF NANAIMO RIVER SHOWING LOCATION OF CROSS-SECTIONS		NTS Map No. 92 FDC 4 G/SW
DRAWN <i>B. Boyd</i>			SCALE 1:10 100 APPROX.
CHECKED <i>P. Dixon</i> DATE JAN., 1983			DRAWING No. 5383-1
ENGINEER	APPROVED <i>[Signature]</i> HEAD, SURVEYS SUBSECTION	DATE JAN., 1983	SHEET 1 of 2



FILE Nos.	Branch	Section
SURVEY PROJECT No. 82 FDC 4		
NTS Map No. 92 FSE, G/SW		
SCALE 1:10 100 APPROX.		
DRAWING No. 5383-1		
SHEET 1 of 2		

Province of British Columbia	Ministry of Environment WATER MANAGEMENT BRANCH
FLOOD PLAIN MAPPING PROGRAM UNCONTROLLED MOSAIC OF NANAIMO RIVER SHOWING LOCATION OF CROSS-SECTIONS	
APPROVED	DATE JAN., 1983
HEAD, SURVEYS SUBSECTION	

SURVEYED	T. DIGNAN
DATE	AUG., 1982
COMPILED	B. BOYD
CHECKED	<i>J. Warburton</i>
DATE	JAN., 1983
DRAWN	<i>B. Boyd</i>
CHECKED	<i>P. Dixon</i>
DATE	JAN., 1983
ENGINEER	

SURVEYED T. DIGNAN	Province of British Columbia	Ministry of Environment WATER MANAGEMENT BRANCH	FILE No.
DATE AUG., 1982			Branch
COMPILED B. BOYD	FLOOD PLAIN MAPPING PROGRAM UNCONTROLLED MOSAIC OF NANAIMO RIVER SHOWING LOCATION OF CROSS-SECTIONS		Section
CHECKED <i>J. Weir</i>			SURVEY PROJECT No. 82 FDC 4
DATE JAN., 1983			NTS Map No. 92 F/SE, G/SW
DRAWN <i>B. Lawson</i>			SCALE 1:10 100 APPROX.
CHECKED <i>P. Dico</i>	APPROVED <i>[Signature]</i>	DATE JAN., 1983	DRAWING No. 5383-2
ENGINEER	HEAD, SURVEYS SUBSECTION	SHEET 2 of 2	

