

NOTE:

This information is considered historical as it represents channel conditions and configuration at the time of the survey only. User must accept responsibility of ensuring that the accuracy and completeness of provided data is suitable for the needs of the project or study. It is provided "as is" without warranty of any kind, whether express or implied. Under no circumstances will the Government of British Columbia be liable to any person or business entity for any direct, indirect, special, incidental, consequential, or other damages based on any use of this information.

SUMMARY

PROJECT 86RPP16

High water marks - North Thompson River

Field: June 18 to 20, 1986 inclusive.

Office: July 14, 1986

Verbal request by: R. W. Nichols, Special Projects Section

Survey carried out by 4 man crew under the supervision of T. M. Dignan. Some field assistance was given by Messrs. P. Doyle and P. Schroeder of Kamloops Regional office and R. W. Nichols of the Victoria office.

Levelled points were selected and marked by regional staff. Some additional information at the "Erler" property was required by Mr. Nichols and obtained with his assistance.


All elevations were obtained by direct levelling and are referred to Geodetic Survey of Canada datum.

Points 1 to 9 inclusive were levelled by Regional staff and are accepted and listed as received.

Data returns computed and assembled by R. B. Edward and consist of:

1 volume containing list of derived elevations and parts of pertinent map sheets showing point location.

Distribution: Original & 1 copy to R. W. Nichols
1 copy to Survey Section file


86/07/14

NORTH THOMPSON RIVER
HIGH WATER MARKS JUNE 1986

H.W.M.	ELEVATION	GENERAL AREA	SURVEYED BY
1	397.36	BLACKPOOL	REGIONAL DATA
2	397.44	BLACKPOOL	REGIONAL DATA
3	397.65	BLACKPOOL	REGIONAL DATA
4	395.59	BLACKPOOL	REGIONAL DATA
5	393.73	BLACKPOOL	REGIONAL DATA
6	394.17	BLACKPOOL	REGIONAL DATA
7	397.50	BLACKPOOL	REGIONAL DATA
8	396.53	BLACKPOOL	REGIONAL DATA
9	396.90	BLACKPOOL	REGIONAL DATA
10	351.76	HEFFLEY	SURVEY SECTION
12	359.53	McLURE	SURVEY SECTION
13	379.71	BARRIERE-LITTLE FORT	SURVEY SECTION
14	381.58	BARRIERE-LITTLE FORT	SURVEY SECTION
15	382.83	BARRIERE-LITTLE FORT	SURVEY SECTION
16	383.60	LITTLE FORT	SURVEY SECTION
17	396.27 ✓	BLACKPOOL	SURVEY SECTION
18	401.75 -2	BLACKPOOL	SURVEY SECTION
19	396.14	BLACKPOOL	SURVEY SECTION
19A	396.04	BLACKPOOL	SURVEY SECTION
22	406.91	CLEARWATER	SURVEY SECTION
26	423.27	BIRCH ISLAND	SURVEY SECTION
27	419.14	BIRCH ISLAND	SURVEY SECTION
28	419.70	BIRCH ISLAND	SURVEY SECTION

EARLER' FARM

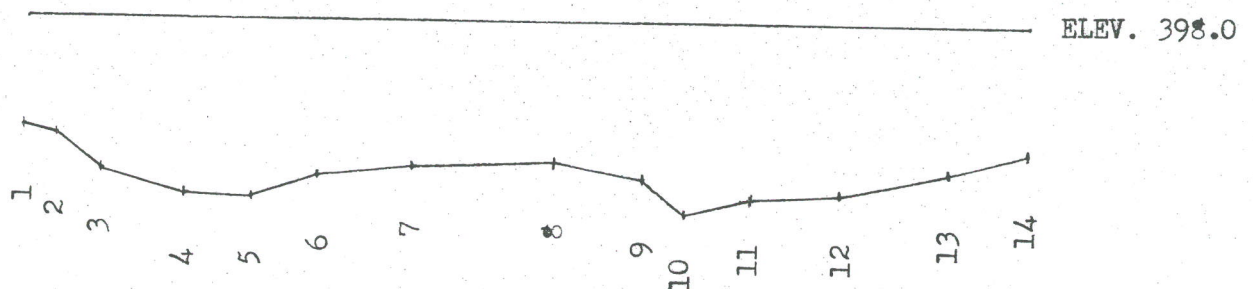
Farmhouse floor elevation 396.44
 Groundlevel @ sandbags elevation 396.29
 NE corner of hay barn elevation 396.26
 C/L Road adjacent driveway elevation 396.53

NO.	DISTANCE	CHAINAGE	ELEVATION	REMARKS
1	0.0	0.0	396.53	C/L Road
2	4.64	4.64	396.44	Edge pavement
3	5.28	9.92	396.00	Toe
4	10.88	20.80	395.69	Fencecorner
5	8.82	29.62	395.65	
6	8.60	38.22	395.93	
7	12.74	50.96	396.06	
8	18.99	69.95	396.13	
9	11.41	81.36	395.94	Fencecorner
10	5.46	86.82	395.46	
11	8.79	95.61	395.69	Fencecorner
12	10.47	106.08	395.75	
13	15.19	121.27	396.06	
14	10.57	131.84	396.36	GL @ Barn

Cross section thru Earler's farm runs parallel with
 fence on west side of driveway from C/L Old N. Thompson
 Highway to edge of barn

XS EARLER'S FARM

HSCALE 1:1000 VSCALE 1:100



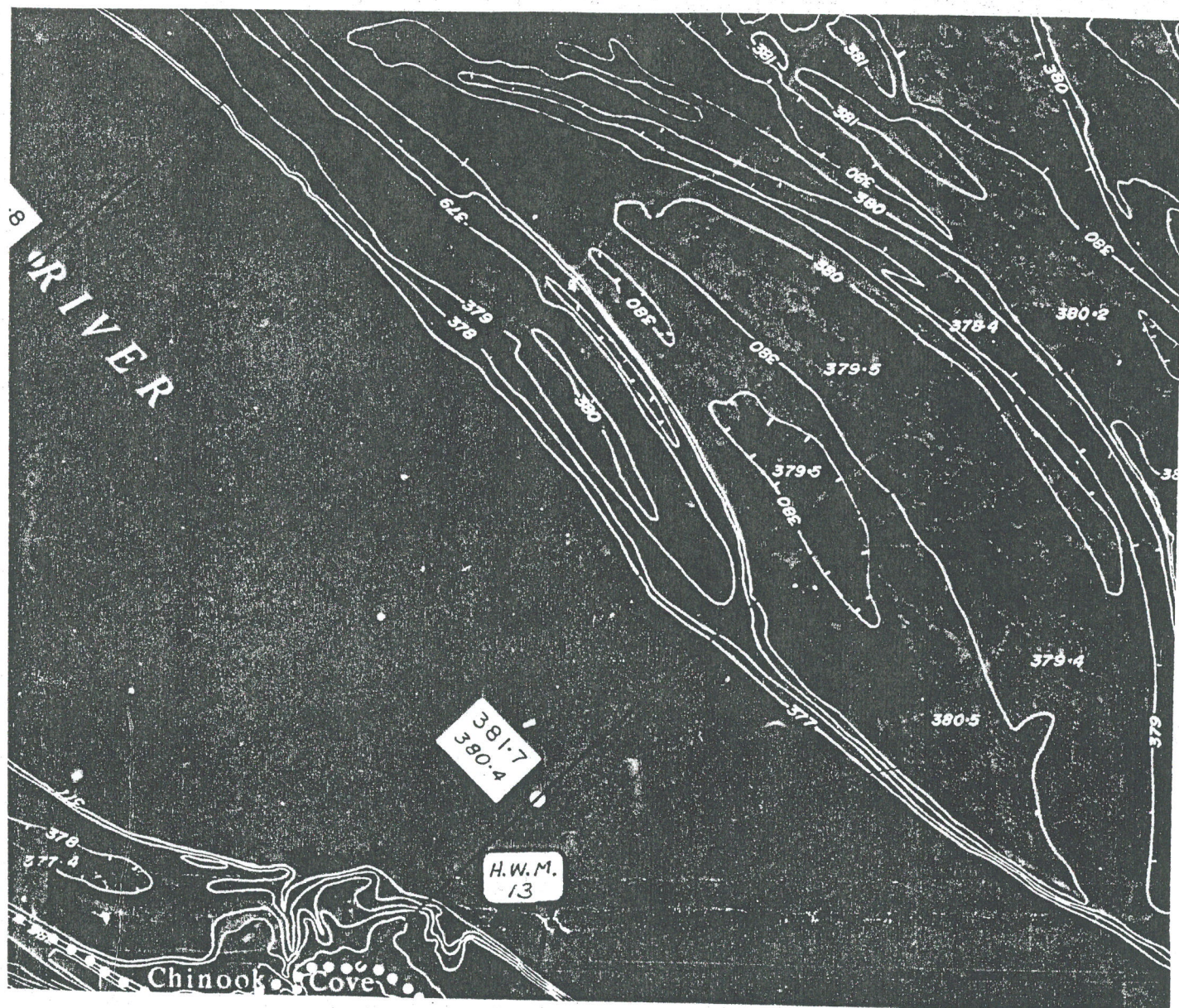
HEFFLEY



SEE DRAWING NO. A5302 - 9

H.W.M. 10 ELEV. 351.76

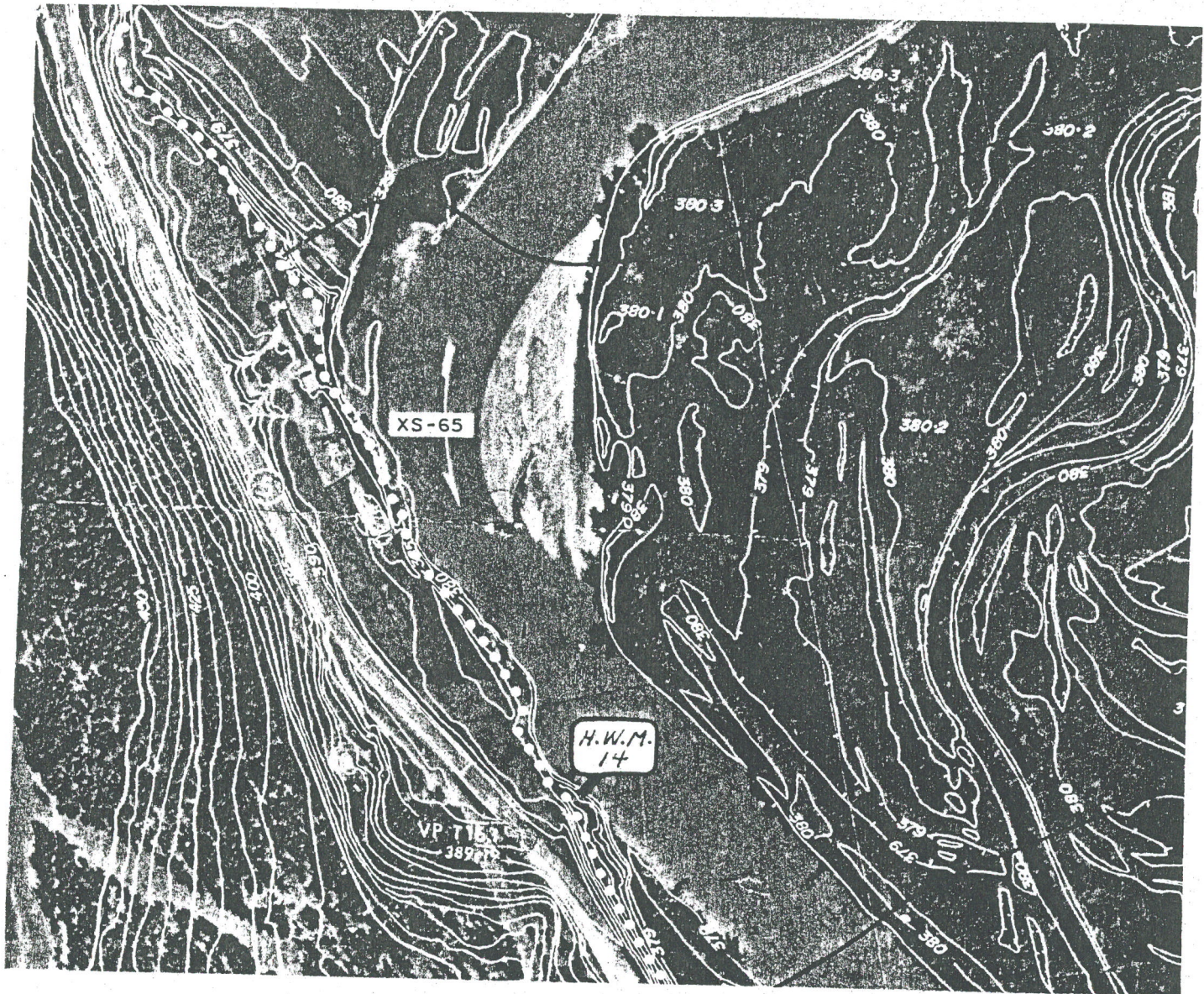
BARRIERE - LITTLE FORT



SEE DRAWING NO. A5302 - 27

H.W.M. 13 ELEV. 379.71

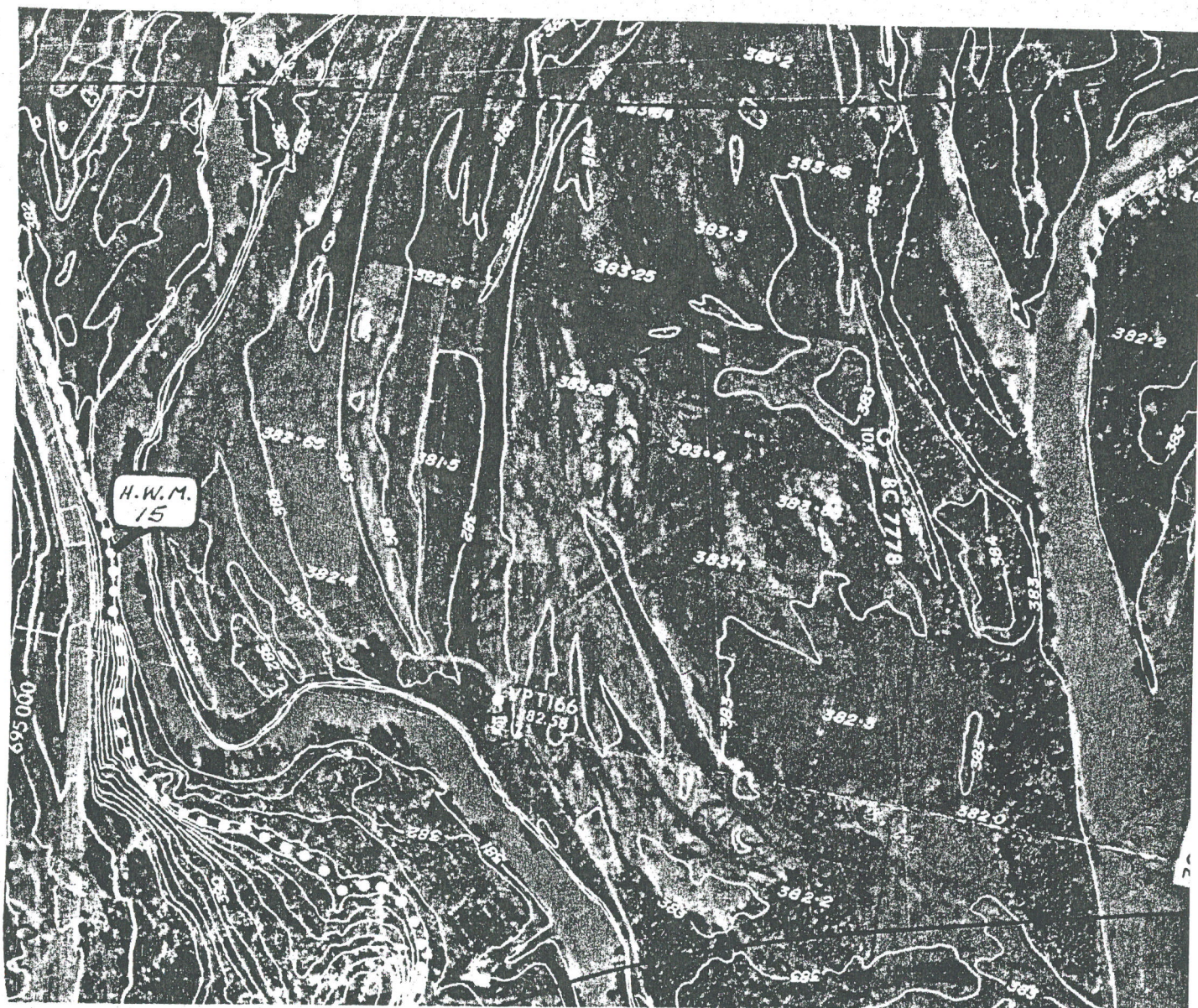
BARRIERE - LITTLE FORT



SEE DRAWING NO. A5302 - 32

H.W.M. 14 ELEV. 381.58

BARRIERE - LITTLE FORT

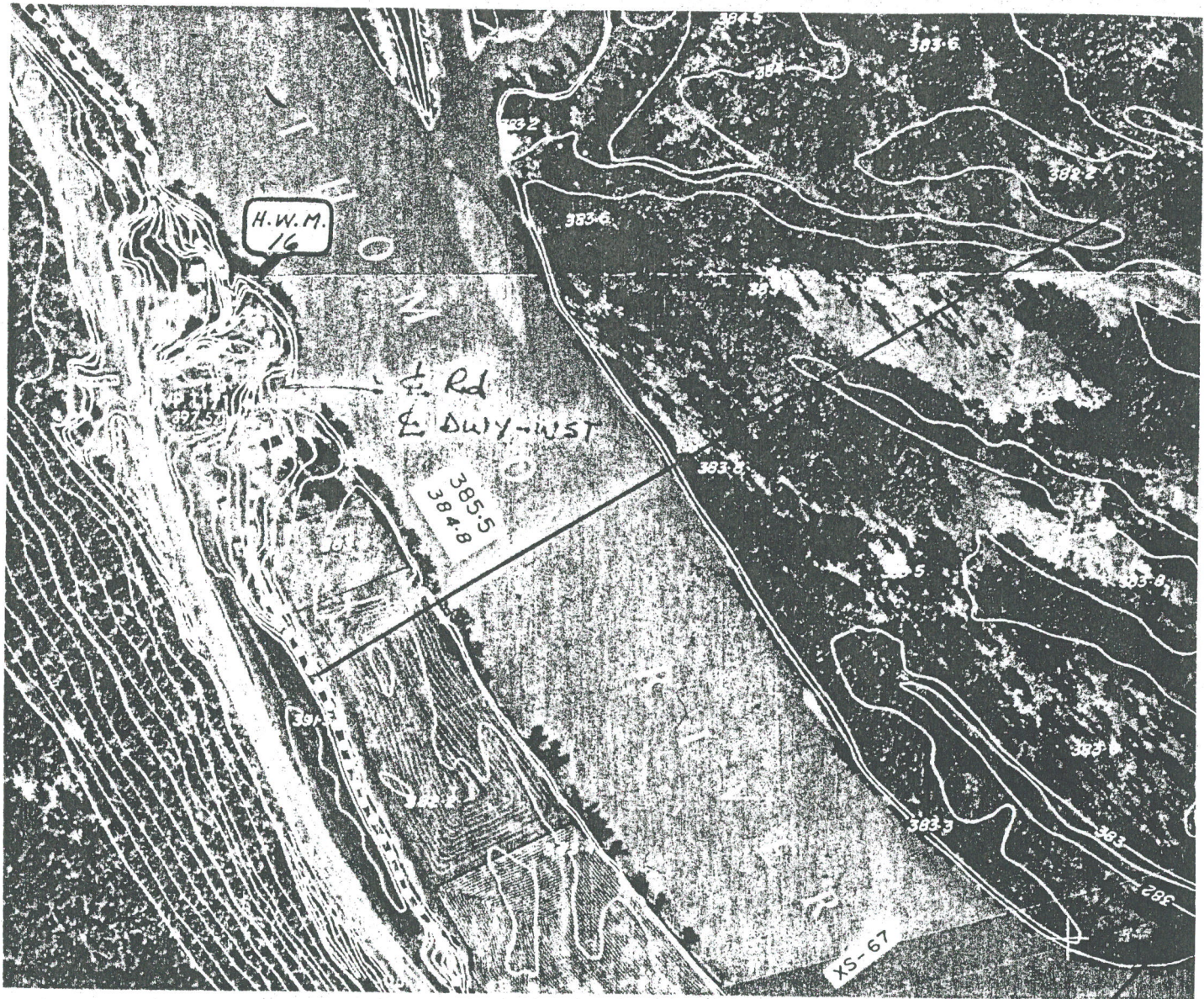


SEE DRAWING NO. A5302 - 33

H.W.M. 15

ELEV. 382.83

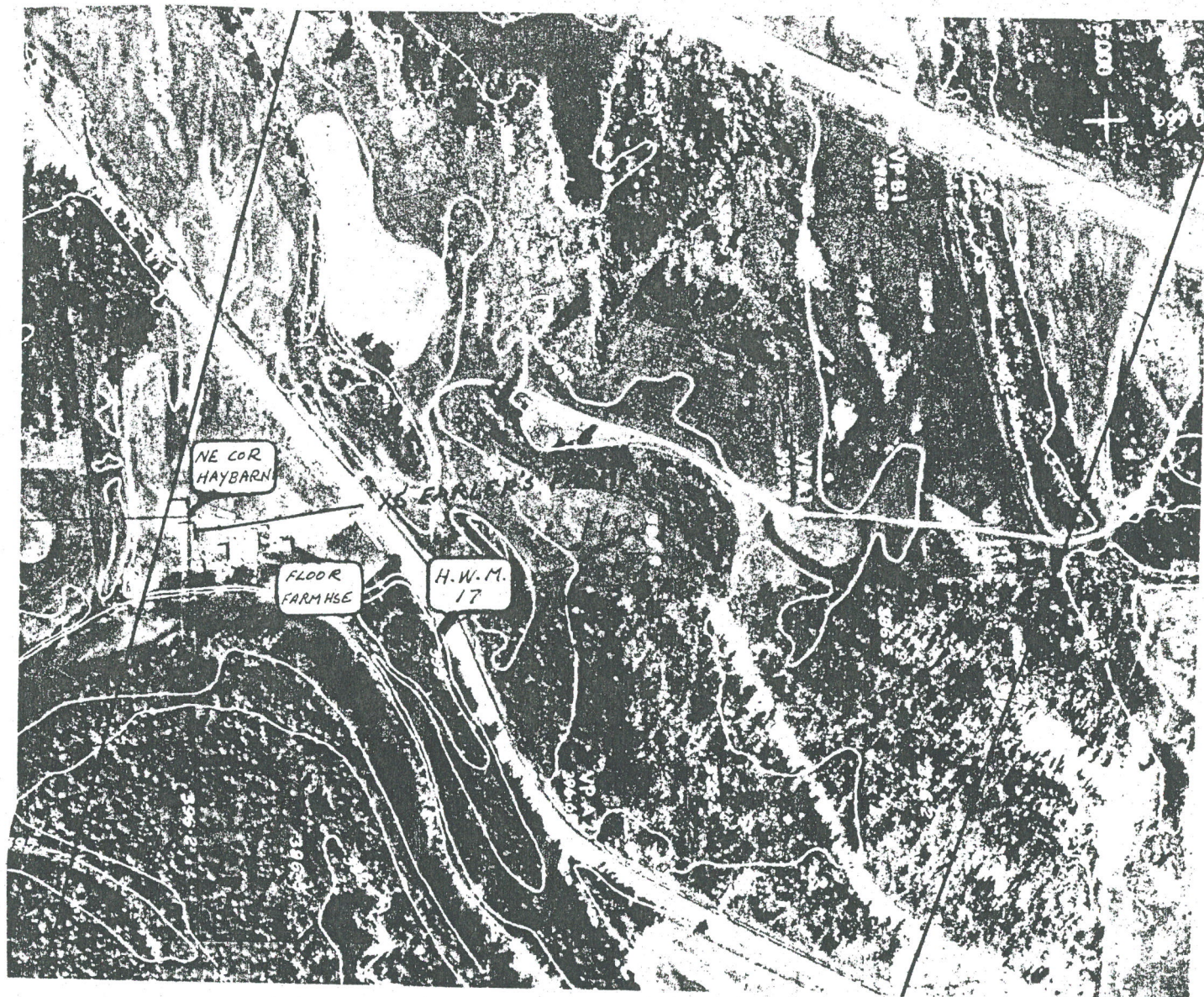
LITTLE FORT



SEE DRAWING NO. A5302 - 34

H.W.M. 16 ELEV. 383.60

BLACKPOOL



SEE DRAWING NO. A5302 - 42

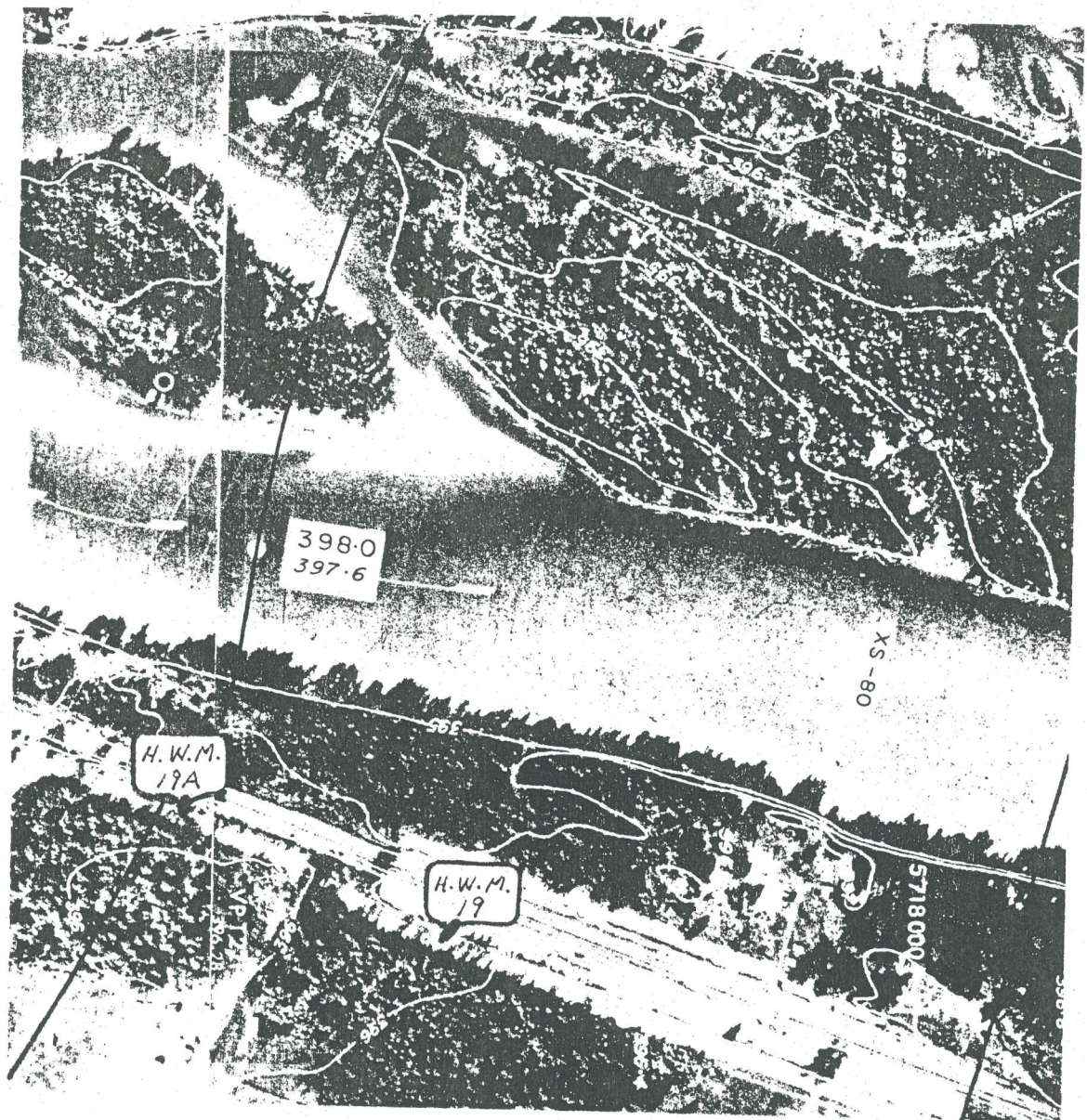
H.W.M. 17 ELEV. 396.27

FARM HOUSE FLOOR ELEV. 396.44

GROUNDLEVEL N.E. CORNER HAYBARN ELEV. 396.26

H. W. M. 18 ELEV. 401.75 = G/L
W/L = -2.90 = 398.85

BLACKPOOL



SEE DRAWING NO. A5302 - 42

H.W.M. 19 ELEV. 396.14

H.W.M. 19A ELEV. 396.04

CLEARWATER



SEE DRAWING NO. A5302 - 45

H.W.M. 22

ELEV. 406.91

BIRCH ISLAND

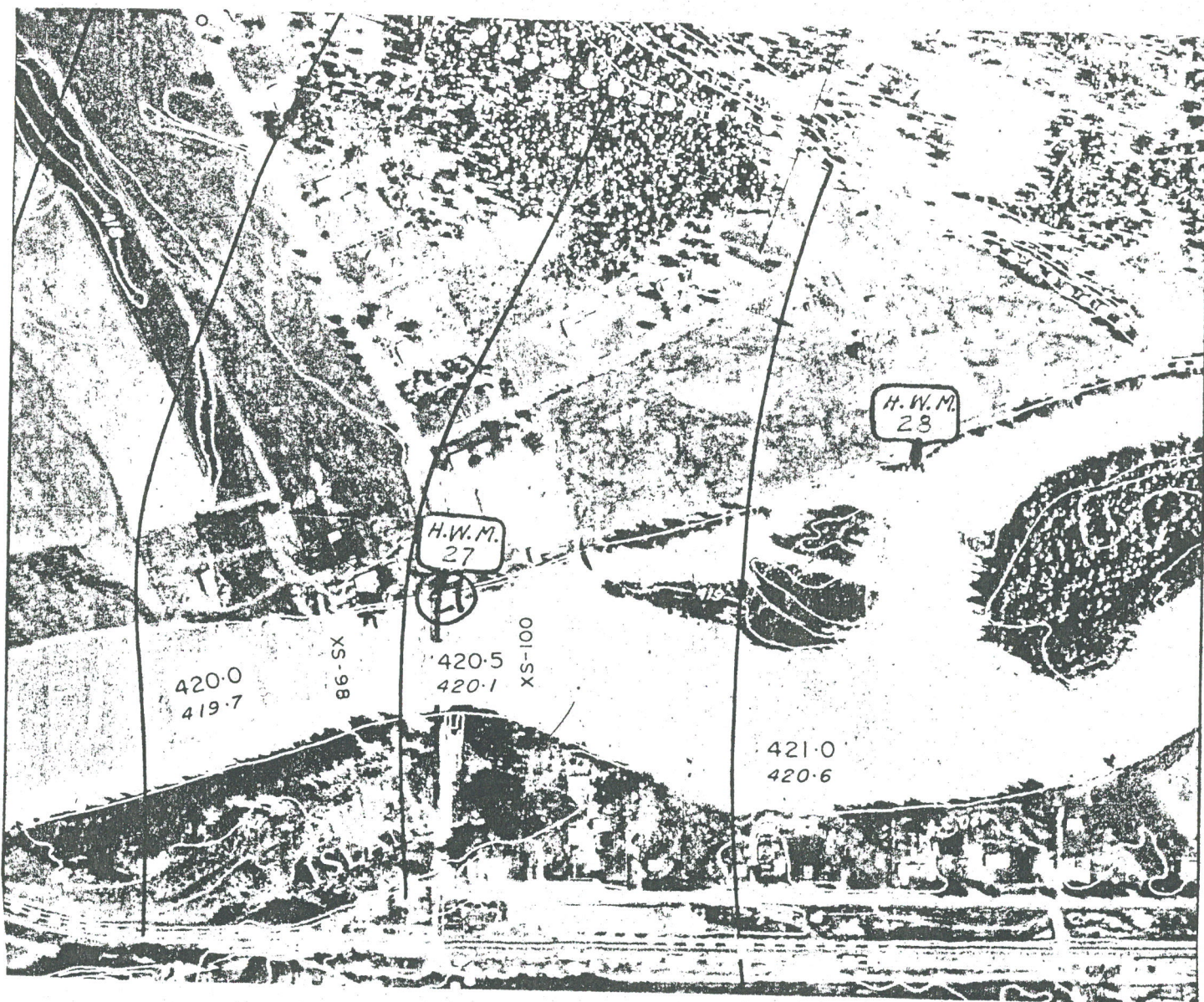


SEE DRAWING NO. A5302 - 47

H.W.M. 26

ELEV. 423.27

BIRCH ISLAND



SEE DRAWING NO. A5302 - 47

H.W.M. 27 ELEV. 419.14

H.W.M. 28 ELEV. 419.70