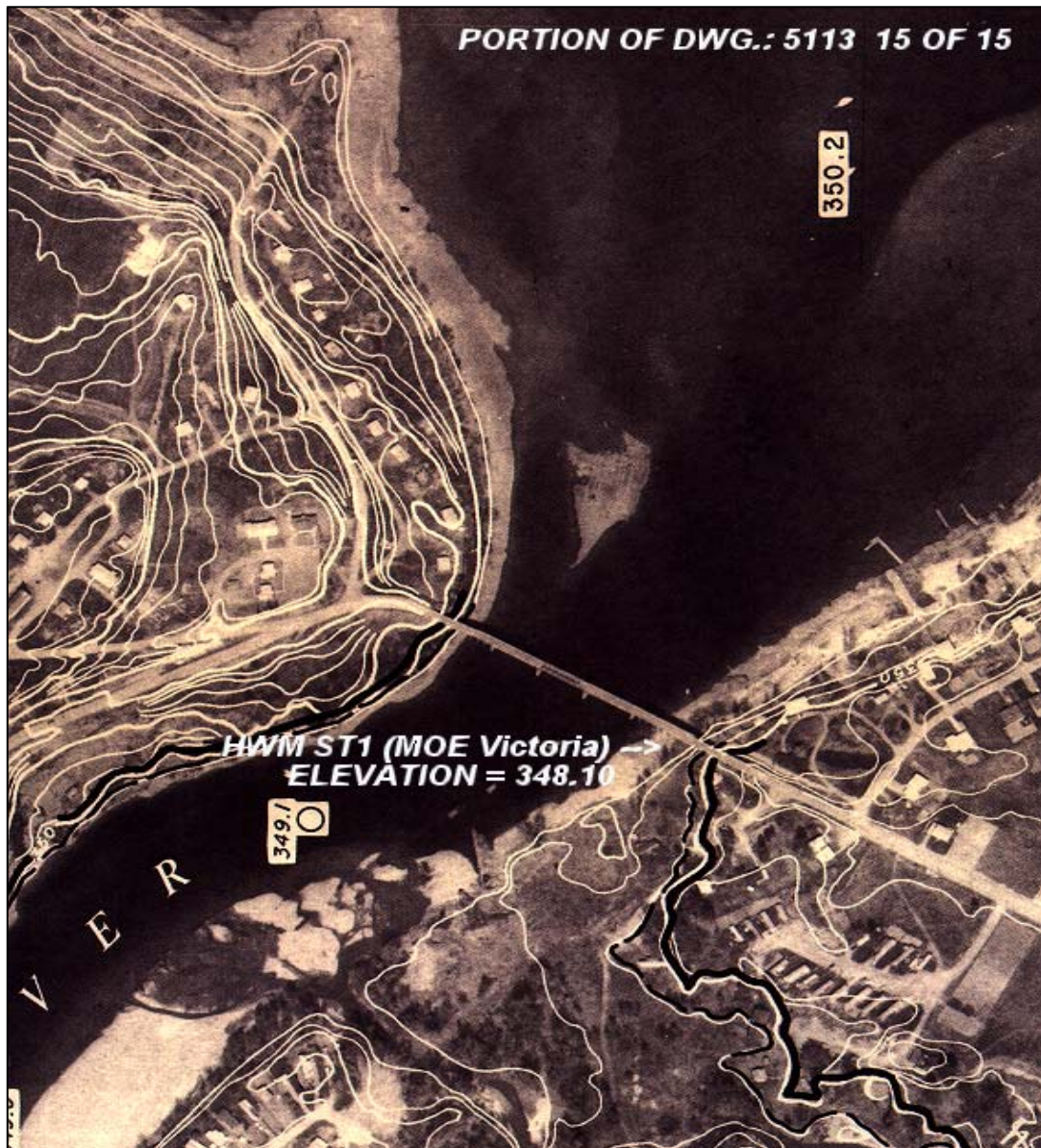


South Thompson River Project: 9715F054
1997 High Water Elevations



HWM ST1 located on the leftbank of South Thompson River

down stream side of bridge at cross section 78 in Chase

Elevation = 348.10 m.

South Thompson River Project: 9715F054
1997 High Water Elevations



HWM ST2 located on the leftbank of South Thompson River

at farm at end of VLA road

Elevation = 347.19 m.

South Thompson River Project: 9715F054
1997 High Water Elevations



HWM ST3 located on the leftbank of South Thompson River

near Harper Creek

Elevation = 346.61 m.

South Thompson River Project: 9715F054
1997 High Water Elevations

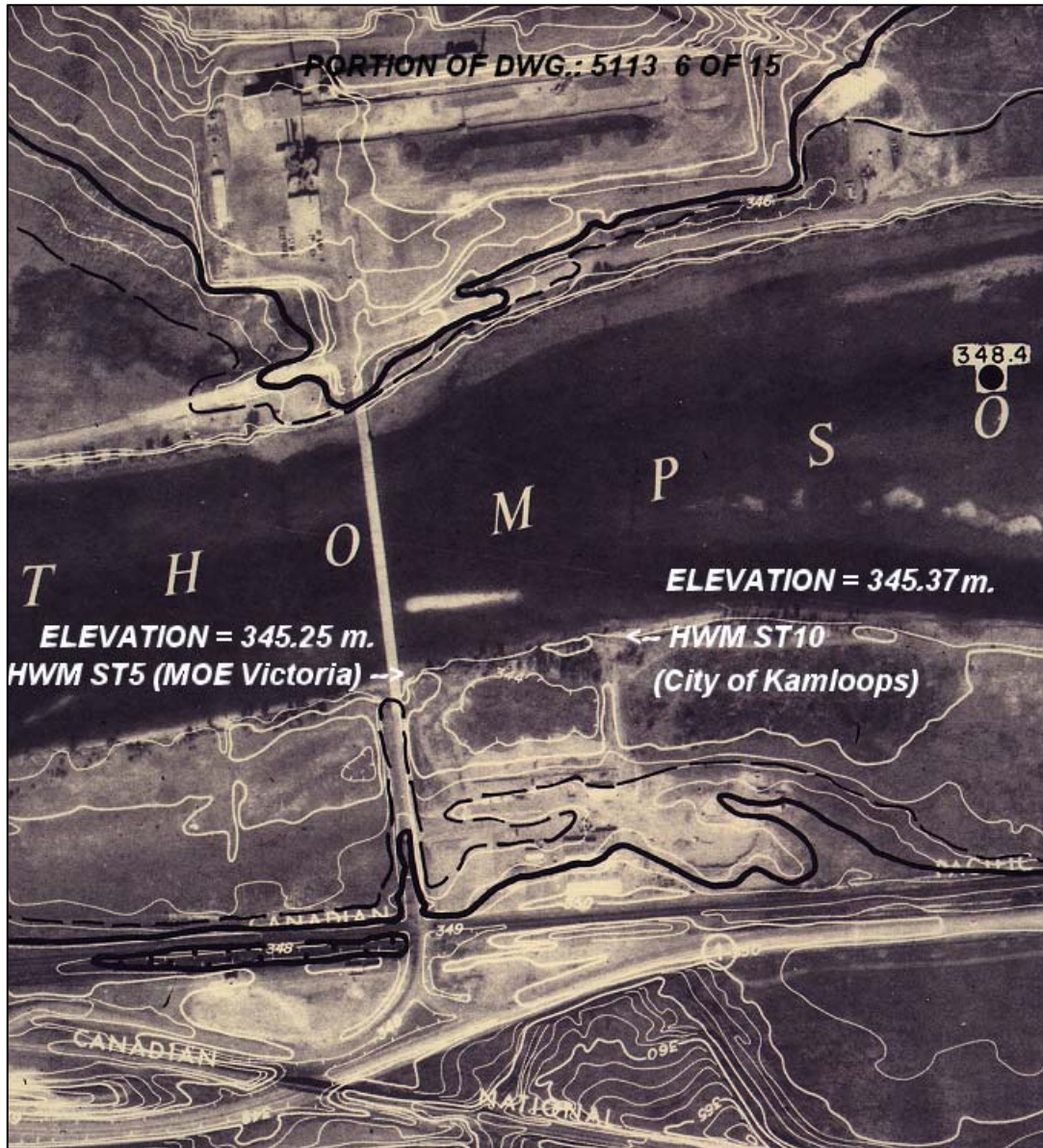


HWM ST4 located on the leftbank of South Thompson River

upstream edge of bridge at Pritchard.

HWM ST4 Elevation = 346.30 m.

South Thompson River Project: 9715F054
1997 High Water Elevations

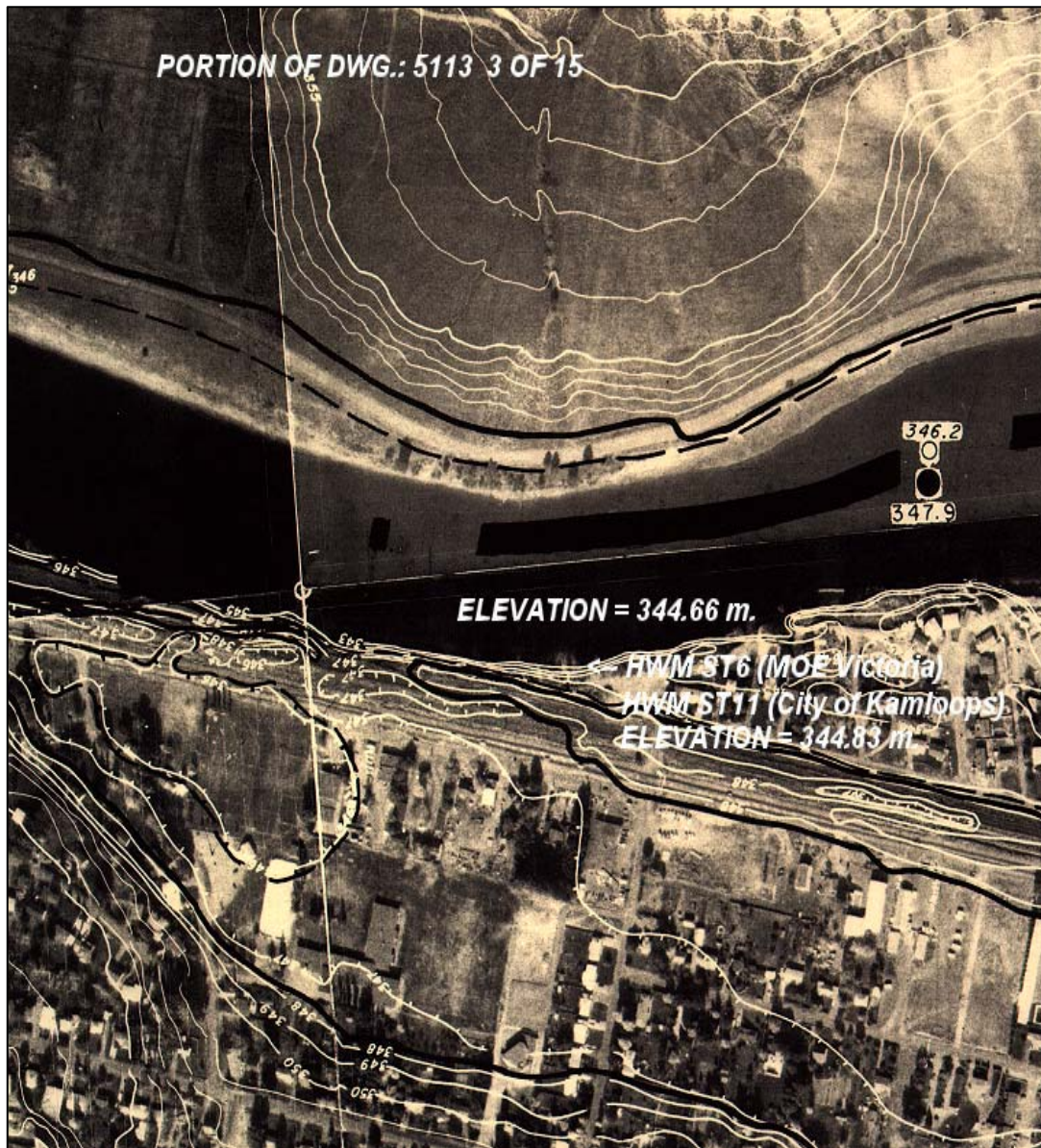


HWM ST5 located on the leftbank of South Thompson River
upstream edge of Lefarge Cement bridge.

HWM ST5 (MOE Victoria) Elevation = 345.25 m.

HWM ST10 (City of Kamloops) Elevation = 345.37 m.

South Thompson River Project: 9715F054
1997 High Water Elevations



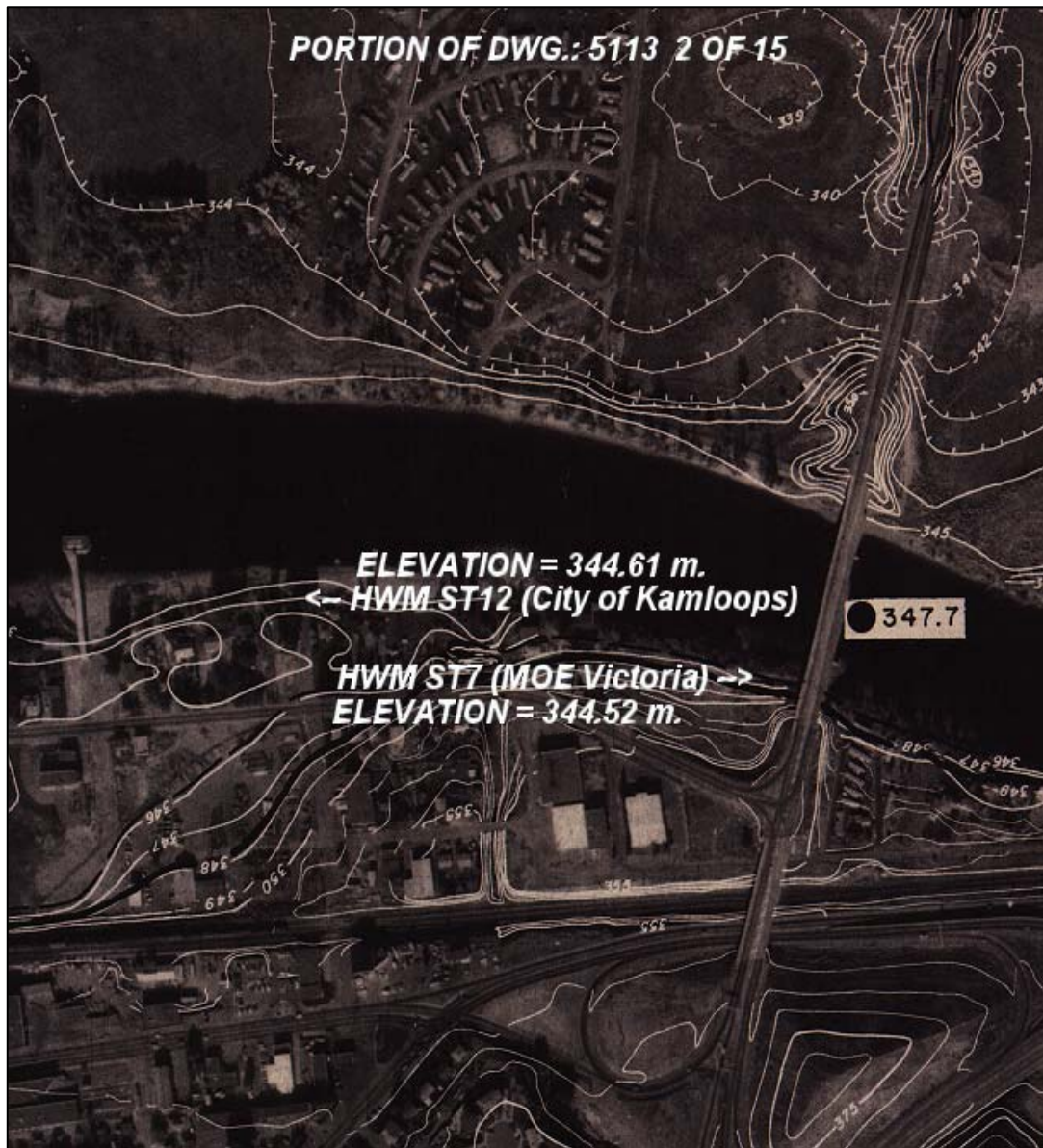
HWM ST6 located on the leftbank of South Thompson River

MOE stake at boat launch parking area

HWM ST6 (MOE Victoria) Elevation = 344.66 m.

HWM ST11 (City of Kamloops) Elevation = 344.83 m.

South Thompson River Project: 9715F054
1997 High Water Elevations



HWM ST7 located on the leftbank of South Thompson River

100 metres downstream of highway bridge

HWM ST7 (MOE Victoria) Elevation = 344.52 m.

HWM ST12 (City of Kamloops) Elevation = 344.61 m.

RIVER

PORTION OF DWG.: 5113 1 OF 15

347.6

SOUTH THOMPSON

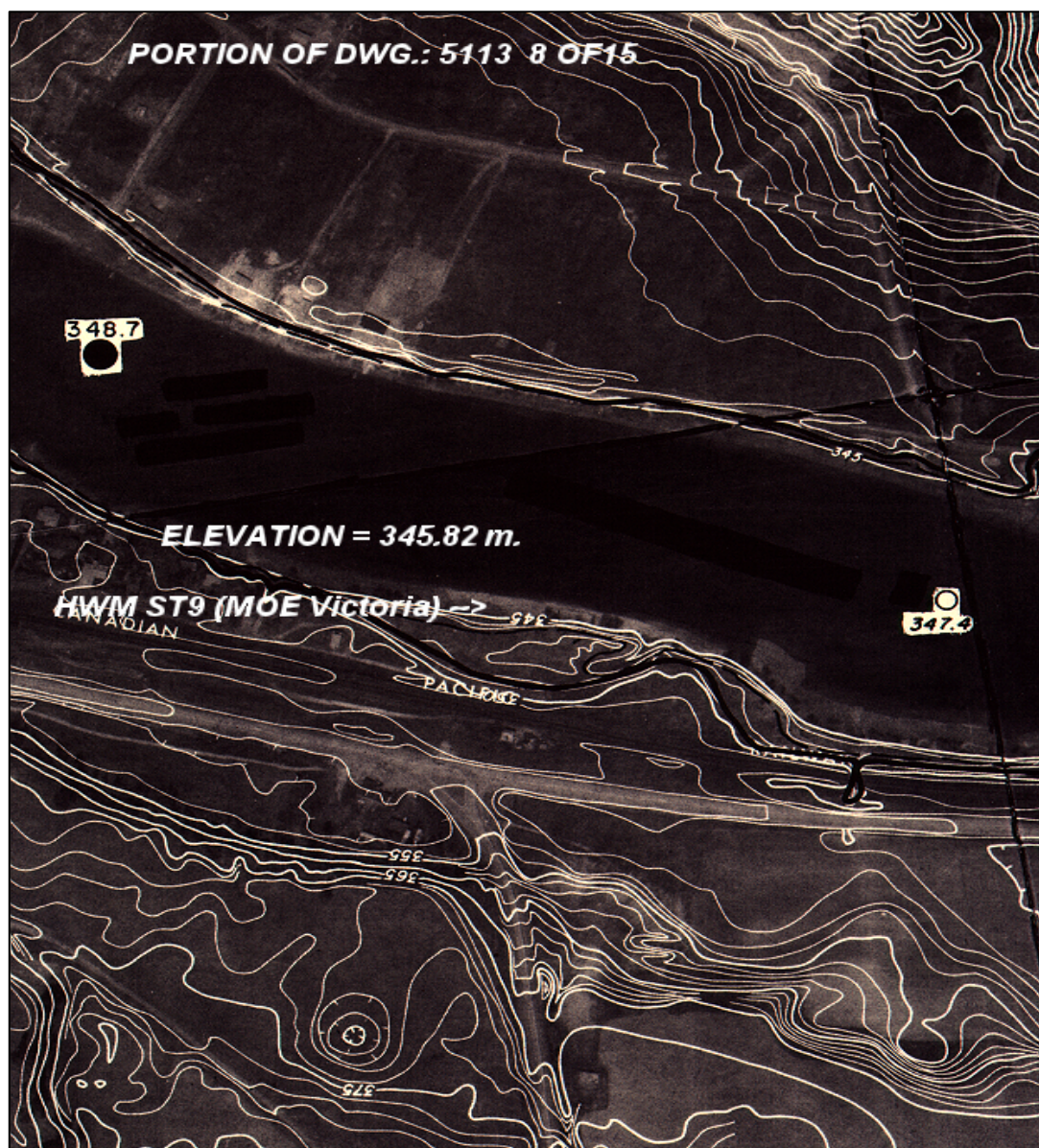
ELEVATION = 344.04 m.

HWM ST8 (MOE Victoria) ->

downstream of railway bridge

Elevation = 344.04 m.

South Thompson River Project: 9715F054
1997 High Water Elevations



HWM ST9 located on the leftbank of South Thompson River

at Old Ferry Road

Elevation = 345.82 m.

RIVER

PORTION OF DWG.: 5112 17 OF 19

(City of Kamloops)

HWM T13
ELEVATION = 344.27

(approximate location) downstream of bridge, at confluence with North and South Thompson Rivers

(City of Kamloops) Elevation = 344.27 m.

Thompson River Project: 9715F054
1997 High Water Elevations



HWM T14 located on the rightbank of Thompson River

(approximate location) opposite upstream end of island.

(City of Kamloops) Elevation = 344.16 m.

Thompson River Project: 9715F054
1997 High Water Elevations



HWM T15 located on the rightbank of Thompson River

(approximate Location)

(City of Kamloops) Elevation = 344.15 m.

North Thompson River Project: 9715F054 1997 High Water Elevations

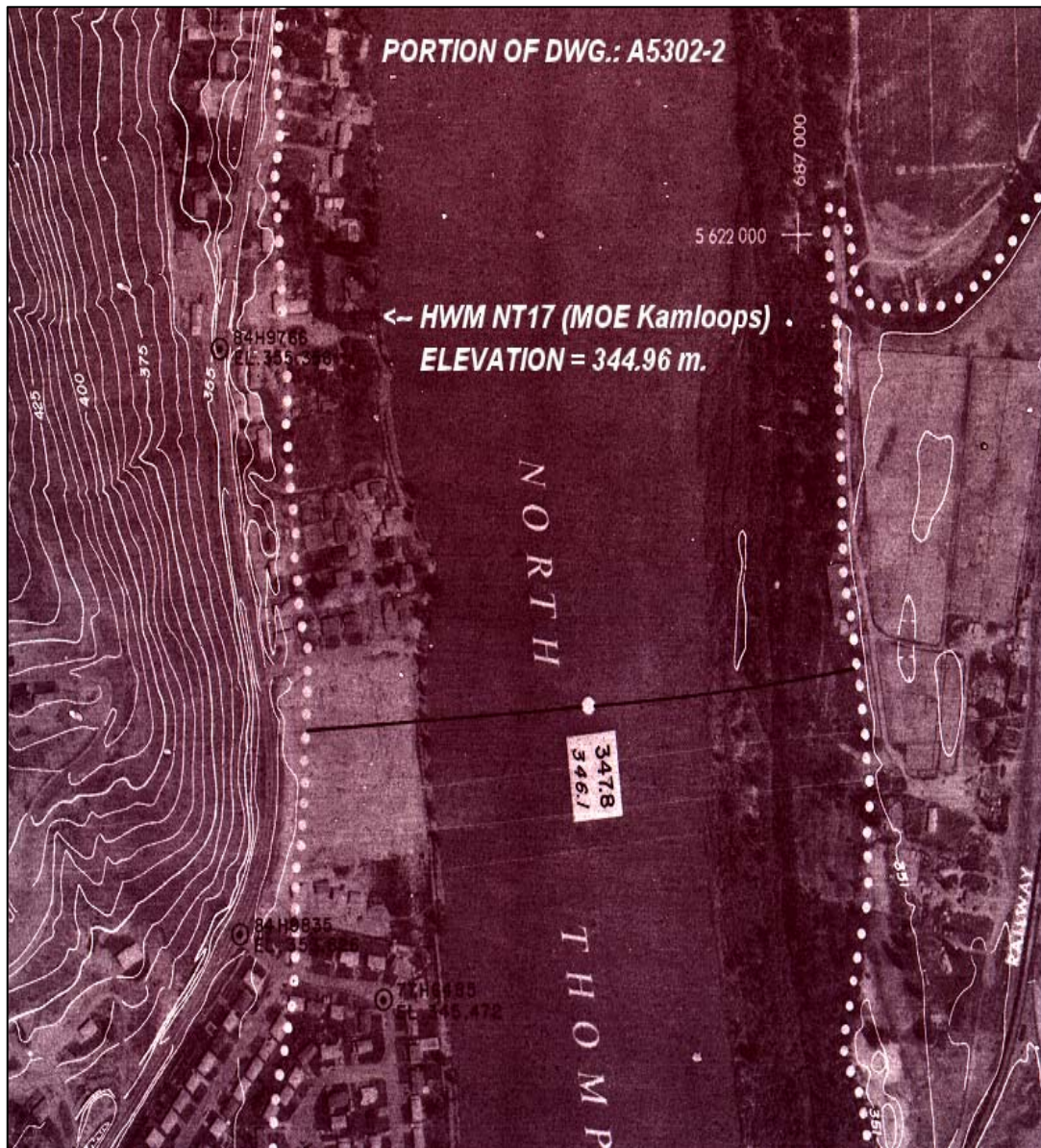


HWM NT16 located on the rightbank of North Thompson River

(approximate Location)

(MOE Kamloops) Elevation = 344.81 m.

North Thompson River Project: 9715F054
1997 High Water Elevations



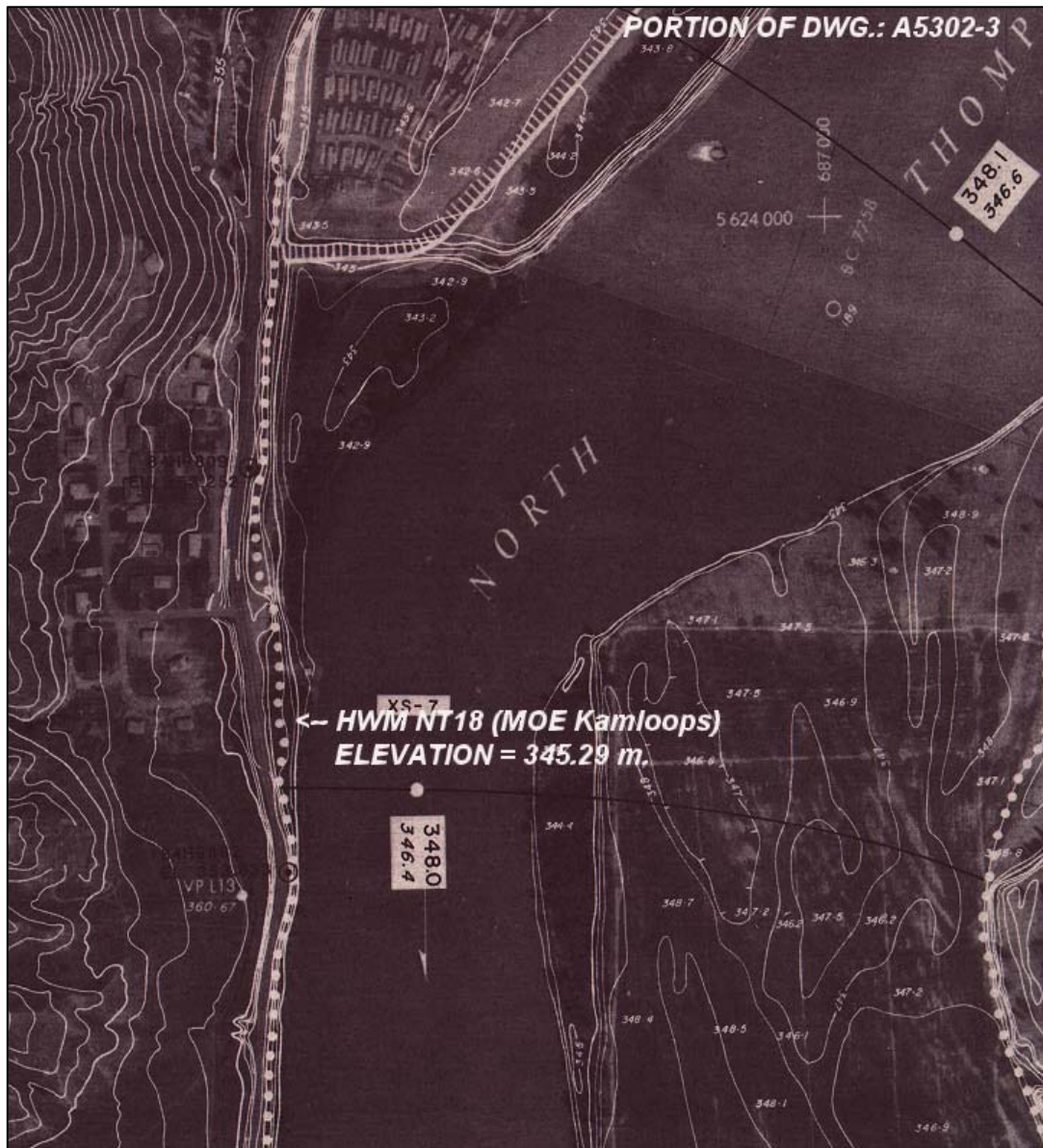
HWM NT17 located on the rightbank of North Thompson River

(approximate Location)

(MOE Kamloops) Elevation = 344.96 m.

North Thompson River Project: 9715F054

1997 High Water Elevations



HWM NT18 located on the rightbank of North Thompson River

(approximate Location)

(MOE Kamloops) Elevation = 345.29 m.

North Thompson River Project: 9715F054
1997 High Water Elevations

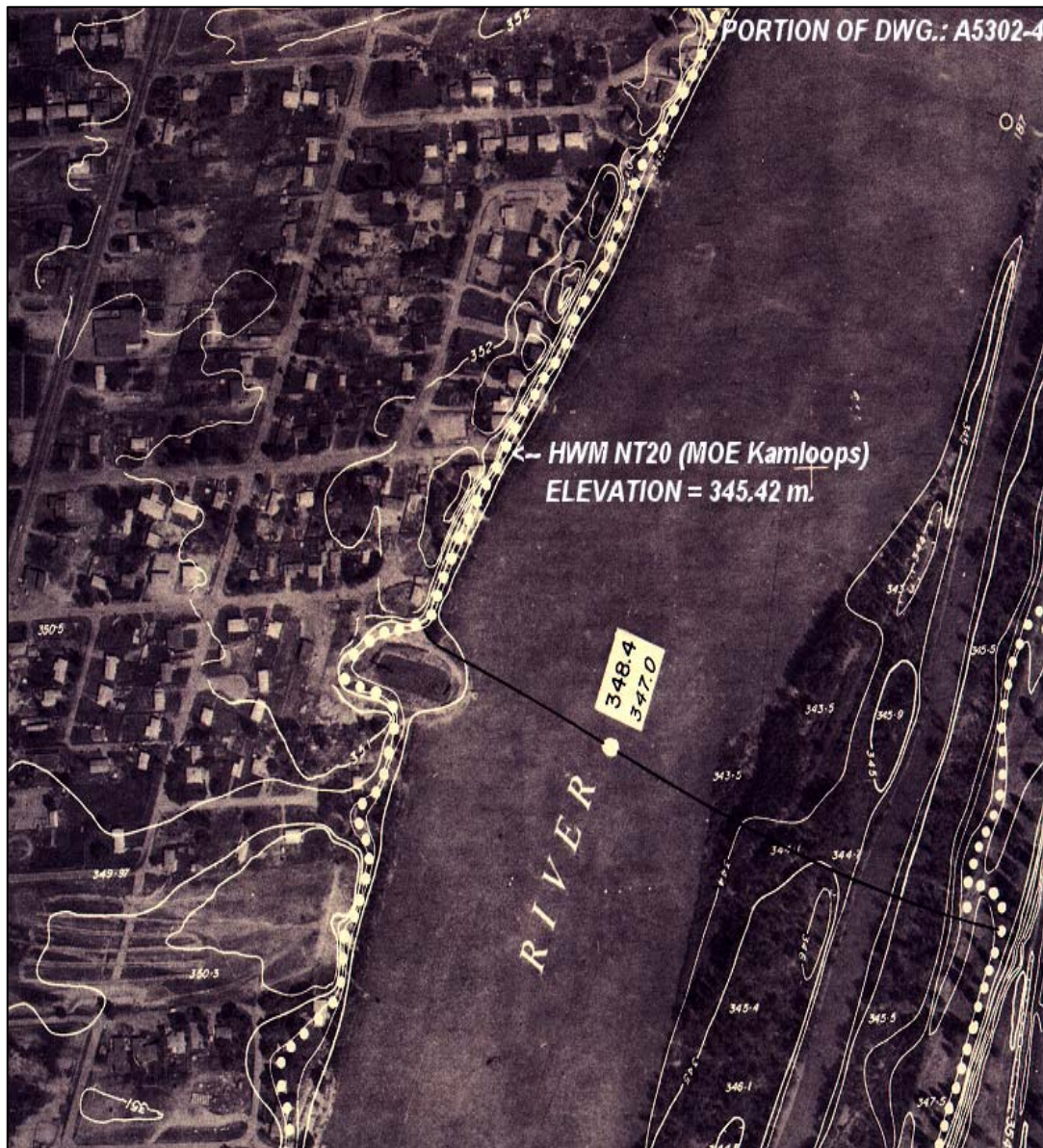


HWM NT19 located on the rightbank of North Thompson River

(approximate Location)

(MOE Kamloops) Elevation = 345.27 m.

North Thompson River Project: 9715F054
1997 High Water Elevations



HWM NT20 located on the rightbank of North Thompson River

(approximate Location)

(MOE Kamloops) Elevation = 345.42 m.

North Thompson River Project: 9715F054
1997 High Water Elevations



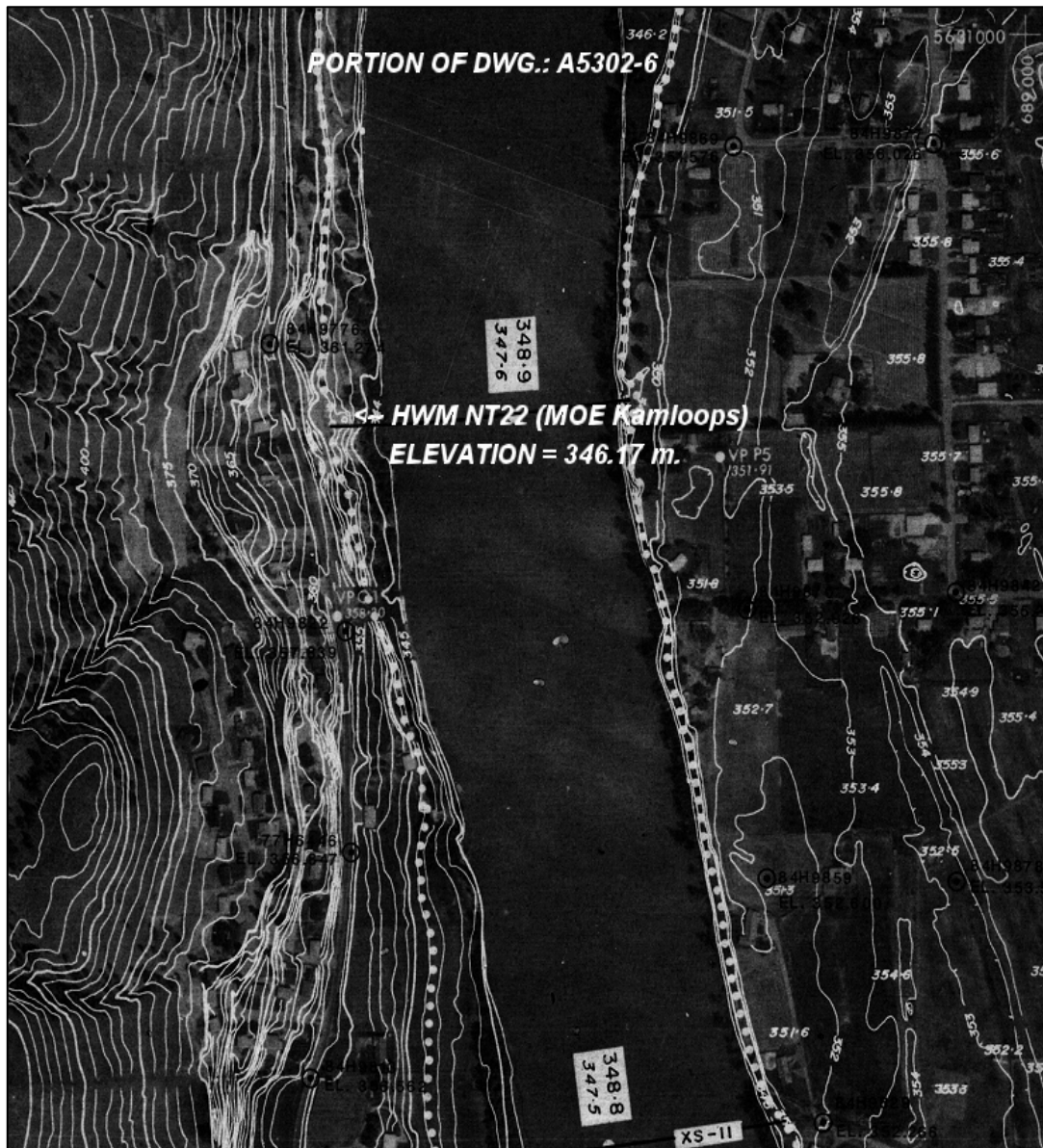
HWM NT21 located on the rightbank of North Thompson River

(approximate Location)

(MOE Kamloops) Elevation = 345.75 m.

North Thompson River Project: 9715F054

1997 High Water Elevations



HWM NT22 located on the rightbank of North Thompson River

(approximate Location)

(MOE Kamloops) Elevation = 346.17 m.

North Thompson River Project: 9715F054

1997 High Water Elevations

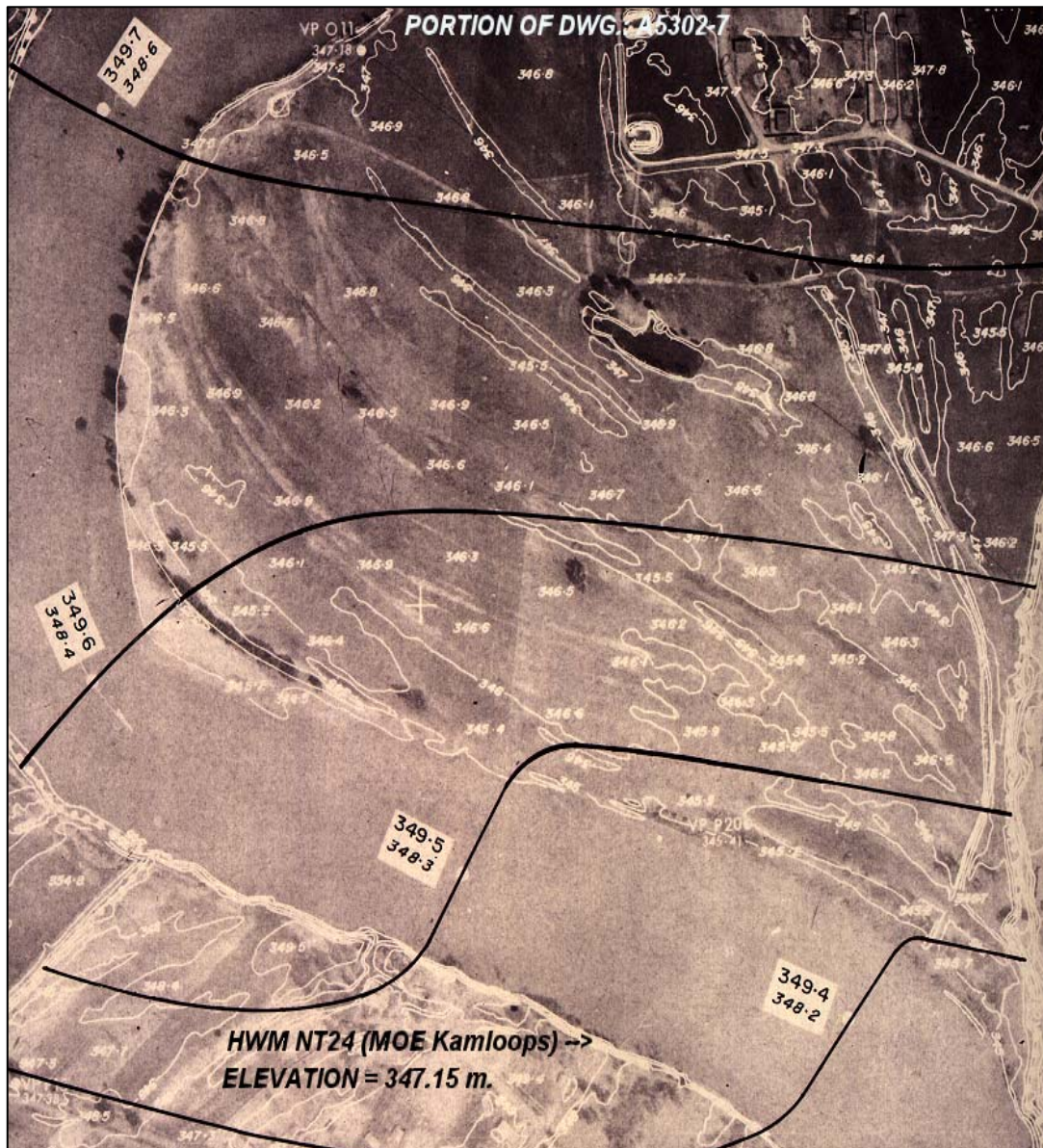


HWM NT23 located on the leftbank of North Thompson River

(approximate Location)

(MOE Kamloops) Elevation = 346.58 m.

North Thompson River Project: 9715F054
1997 High Water Elevations

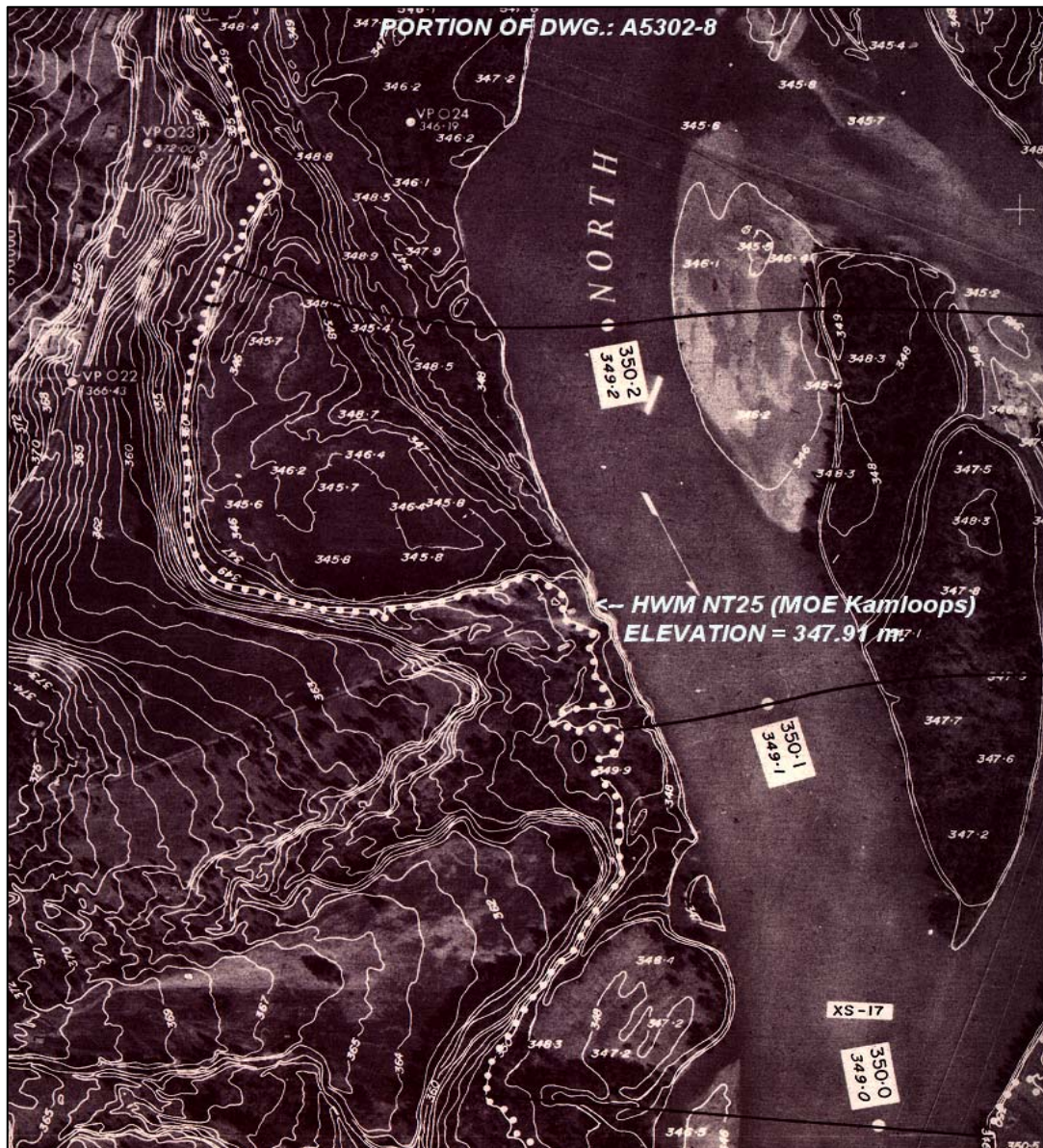


HWM NT24 located on the rightbank of North Thompson River

(approximate Location)

(MOE Kamloops) Elevation = 347.15 m.

North Thompson River Project: 9715F054
1997 High Water Elevations



HWM NT25 located on the rightbank of North Thompson River

(approximate Location)

(MOE Kamloops) Elevation = 347.91 m.

