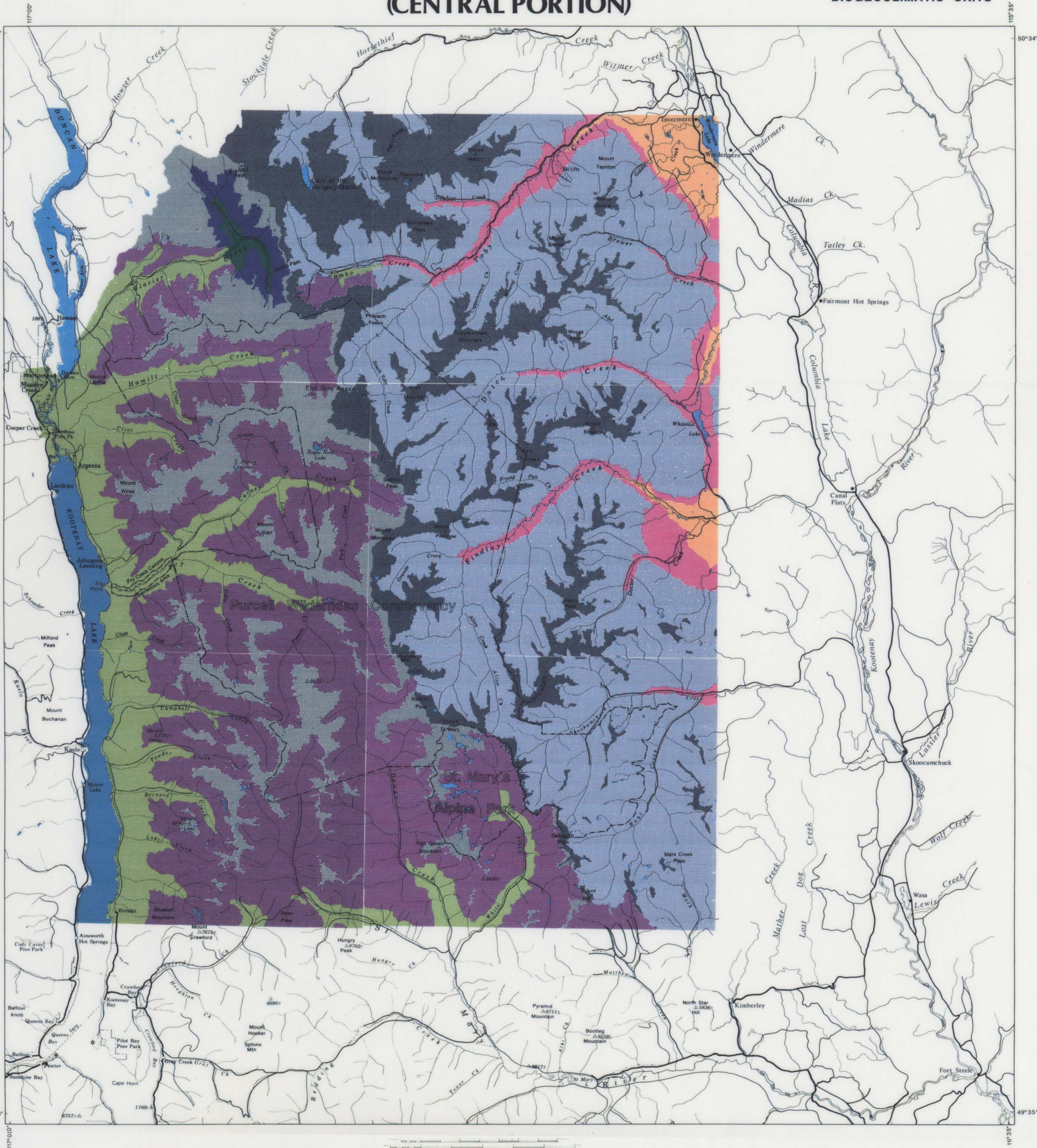
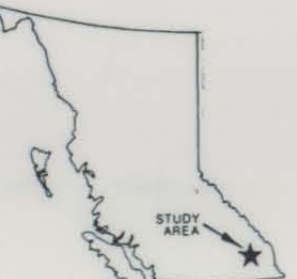


BIOPHYSICAL RESOURCES OF THE PURCELL MOUNTAINS (CENTRAL PORTION)

BIOGEOCLIMATIC UNITS



This map consists of portions of 82F/NE, 82G/NW, 82J/SW, 82K/SE and 82K/NE.
Base map supplied by Computer Graphics, Surveys and Resource Mapping
Branch, Ministry of Crown Lands, February 1989.
Elevations in feet.



BIOGEOCLIMATIC UNITS

| | | | | | |
|--|-------|--|--|-------|---|
| | Ate | Moist Interior Alpine Tundra | | ICHa | Moist Southern Interior Cedar - Hemlock |
| | ATI | Dry Southern Cordilleran Alpine Tundra | | ICHb | Wet Interior Cedar - Hemlock |
| | ESSFa | Dry Southern Cordilleran Forested Engelmann Spruce - Subalpine fir | | IDFg | Dry Cordilleran Interior Douglas fir |
| | ESSFb | Wet Forested Engelmann Spruce - Subalpine fir | | MSa | Dry Southern Cordilleran Montane Spruce |
| | ESSFc | Moist Southern Forested Engelmann Spruce - Subalpine fir | | Water | |