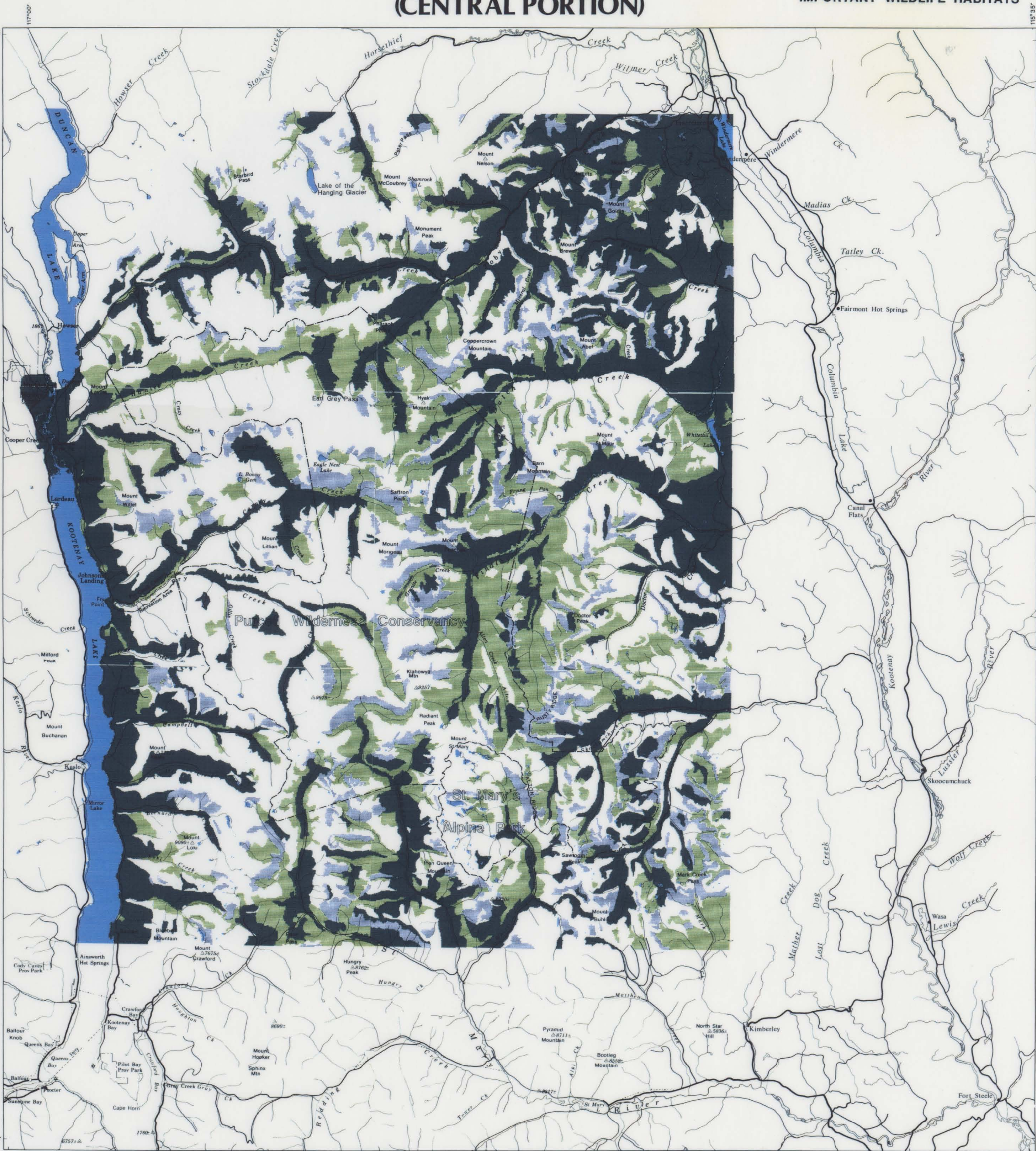
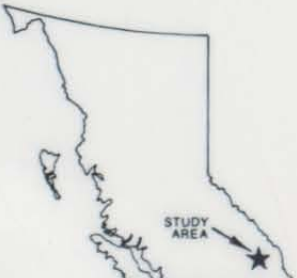


BIOPHYSICAL RESOURCES OF THE PURCELL MOUNTAINS (CENTRAL PORTION)

IMPORTANT WILDLIFE HABITATS



This map consists of portions of 82F/NE, 82G/NW, 82J/SW, 82K/SE and 82K/NE.
Base map supplied by Computer Graphics, Surveys and Resource Mapping
Branch, Ministry of Crown Lands, February 1989.
Elevations in feet.



IMPORTANT WILDLIFE HABITATS

- Winter range for ungulates and/or high grizzly bear capability
- High class ungulate summer range and/or moderate grizzly bear capability
- High class ungulate summer range (mainly goat), very low to no grizzly bear capability
- Other habitats with moderate to low capabilities
- Water

Notes:

- this map delineates those habitats with high potential to support wintering ungulates and/or grizzly bear. It is part of a map series which includes five other individual ungulate species and grizzly bear.
- the study area covers the central portion of the Purcell mountains. This includes the Purcell Wilderness Conservancy and St. Mary's Alpine Park. Similar mapping exists to the east throughout the East Kootenays.
- black line copies at 1:50,000 scale, of the wildlife species capability maps, as well as maps of terrain and biophysical habitat units are available from MAPS BC, Parliament Buildings, Victoria, B.C.
- copies of this coloured map series can be viewed at the BC Parks southern Interior Headquarters, Kamloops, or Fish and Wildlife Branch, Cranbrook, B.C.
- digital product by: Computer Data & Graphics Section, Surveys and Resource Mapping Branch, Ministry of Crown Lands.