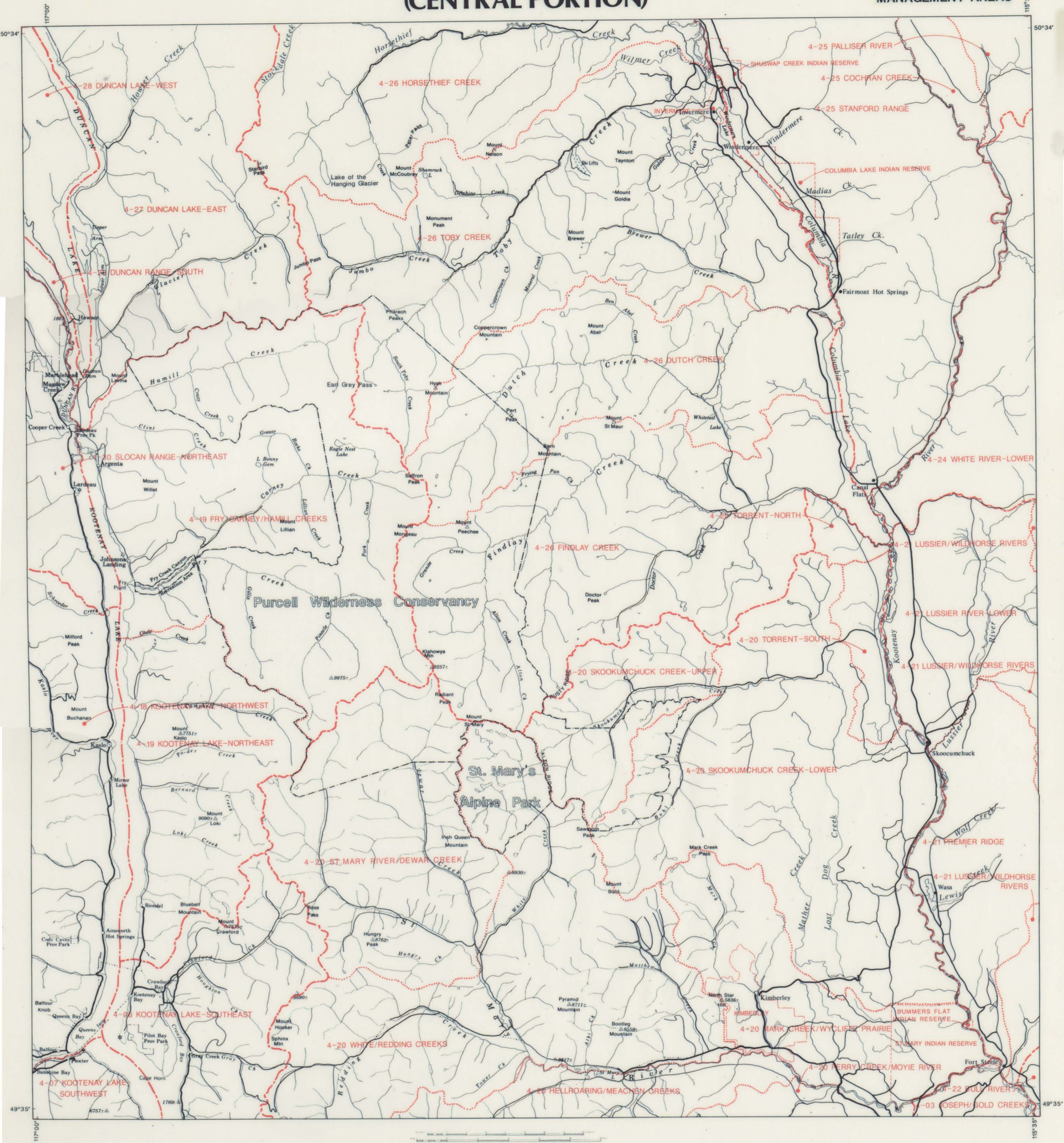


BIOPHYSICAL RESOURCES OF THE PURCELL MOUNTAINS (CENTRAL PORTION)

MANAGEMENT AREAS



This map consists of portions of 82F/NE, 82G/NW, 82J/SW, 82K/SE and 82K/NE.
Base map supplied by Computer Graphics, Surveys and Resource Mapping
Branch, Ministry of Crown Lands, February 1989.
Elevations in feet.

- MANAGEMENT UNITS
- GUIDE TERRITORIES
- MUNICIPALITIES
- INDIAN RESERVES