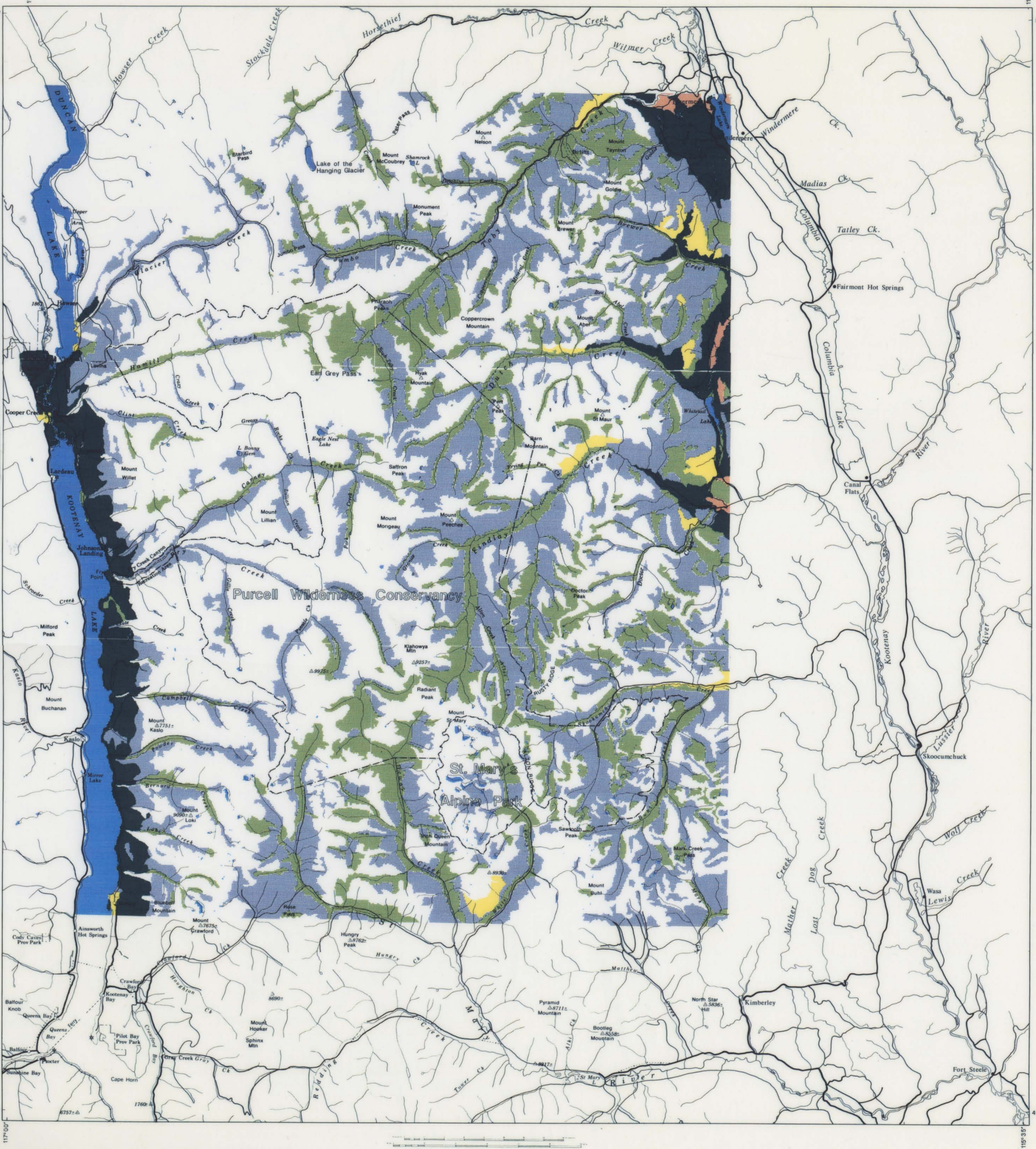
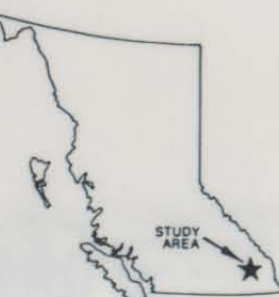


BIOPHYSICAL RESOURCES OF THE PURCELL MOUNTAINS (CENTRAL PORTION)

CAPABILITY FOR ELK



This map consists of portions of 82F/NE, 82G/NW, 82J/SW, 82K/SE and 82K/NE.
Base map supplied by Computer Graphics, Surveys and Resource Mapping
Branch, Ministry of Crown Lands, February 1989.
Elevations in feet.



HABITAT CAPABILITY FOR ROCKY MOUNTAIN ELK

Winter Classes

- Very high (Class 1)
- High (Class 2)
- Moderate (Class 3)
- Low (Class 4)

Summer Classes

- High (Class 3)
- Moderate (Class 4)
- Low (Class 5) and Nil
- Water

Notes:

- this map represents the capability or potential of the habitat in this area to support elk. It is part of a map series which includes five other ungulate species and grizzly bear.
- the study area covers the central portion of the Purcell mountains, this includes the Purcell Wilderness Conservancy and St. Mary's Alpine Park. Similar mapping exists to the east throughout the East Kootenay region.
- black line copies at 1:50,000 scale, of the capability maps, as well as maps of terrain and biophysical habitat units are available from MAPS BC, Parliament Buildings Victoria BC.
- copies of this coloured map series can be viewed at the BC Parks Southern Interior Headquarters, Kamloops or Fish and Wildlife Branch Cranbrook BC.
- digital product by: Computer Data & Graphics Section, Surveys and Resource Mapping Branch, Ministry of Crown Lands.