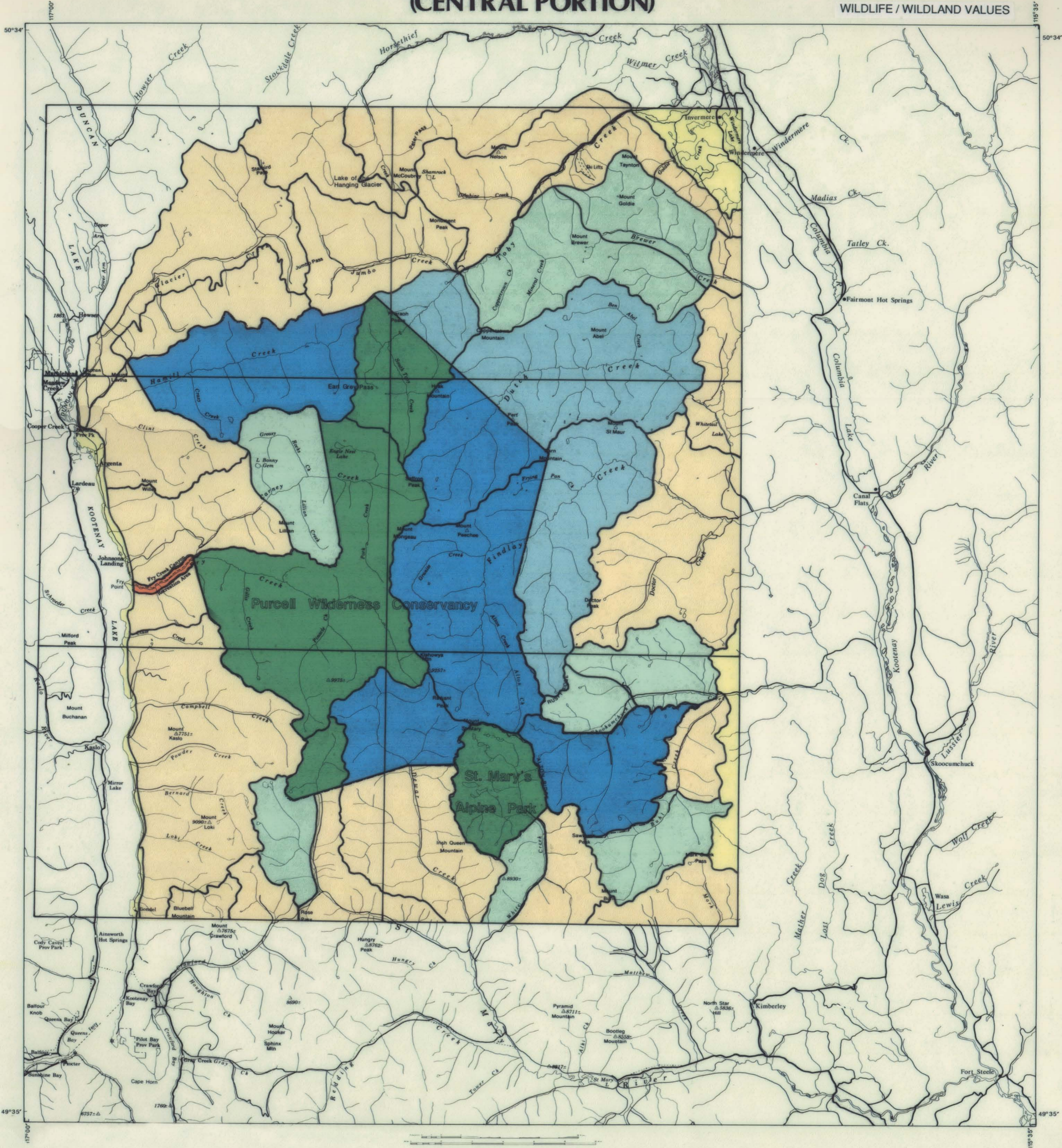


BIOPHYSICAL RESOURCES OF THE PURCELL MOUNTAINS (CENTRAL PORTION)

WILDLIFE / WILDLAND VALUES



This map consists of portions of 82F/NE, 82G/NW, 82J/SW, 82K/SE and 82K/NE.
Base map supplied by Computer Graphics, Surveys and Resource Mapping
Branch, Ministry of Crown Lands, February 1989.
Elevations in feet.



RATING	SCORE	WITHIN PARK	OUTSIDE PARK
Very High	(35+)		
High	(30 - 34)		
Moderate	(15 - 29)		
Low	(1 - 14)		

Notes:

- this map represents an analysis of various wildlife and oldgrowth resources that require wilderness status.
- the 45 different resource management "cells" used in this analysis were based on watershed/administrative units that defined small scale ecological contiguity.
- each resource management cell was analysed for each of 9 parameters: existing old-growth forests by Biogeoclimatic sub-zone; capability to support grizzly bear, mountain goat (winter and summer), woodland caribou (winter) and elk (winter and summer); ecological integration, in that the addition of an unit to the existing conservancy would form a complete big game habitat system; and the degree of access development.
- each parameter was assigned a value from 1 (low) to 6 (high) and the sum of all parameters for each resource management cell was used to determine its Wildlife/Wildland Resource Value.
- the study area covers the central portion of the Purcell Mountains, this includes the Purcell Wilderness Conservancy and St. Mary's Alpine Park.
- black line copies of the wildlife capability ratings and biophysical habitat units at 1:50,000 are available from MAPS BC, Parliament Buildings, Victoria, B.C.