

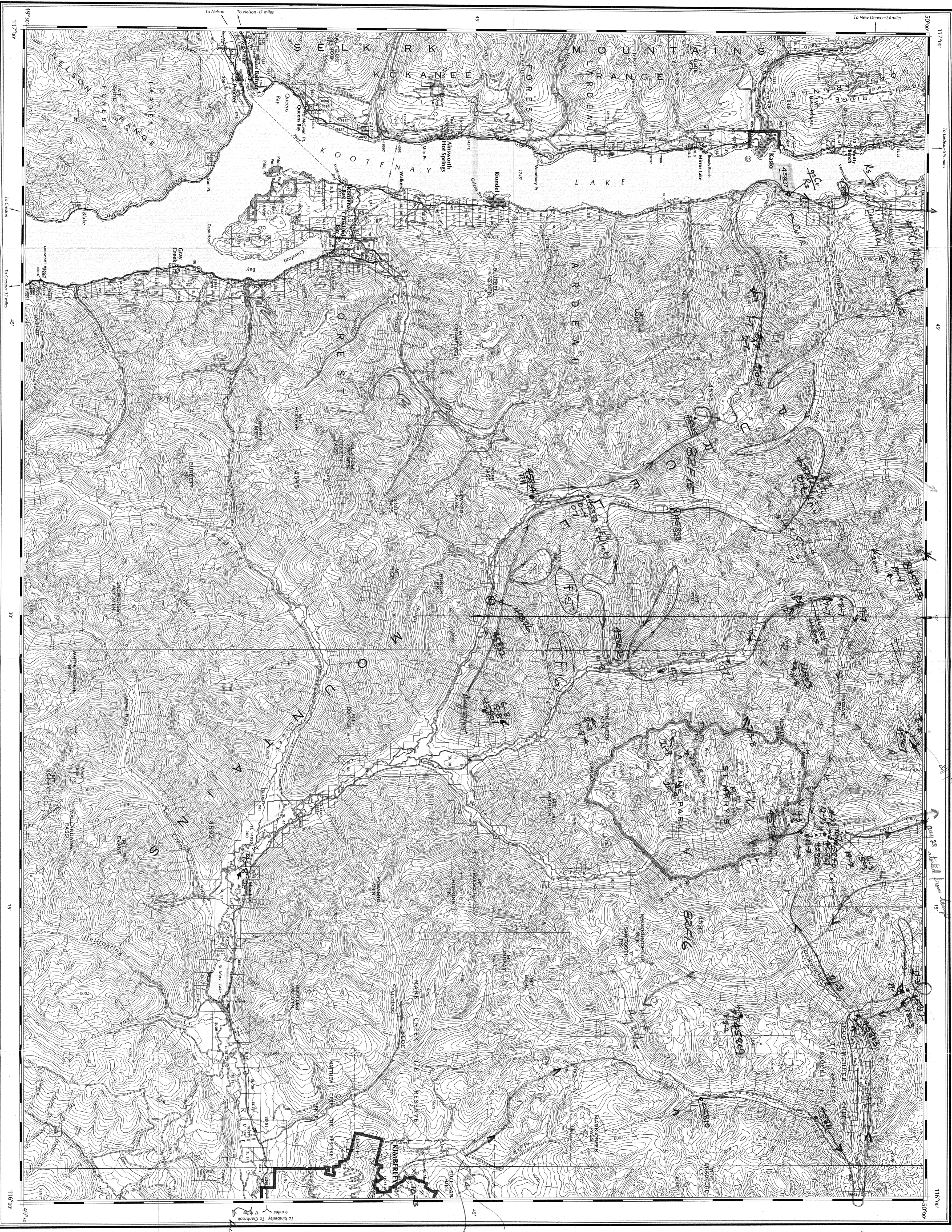
Map: Probert - 5 half

BRITISH COLUMBIA



52K1

NTS MAP 82 FNE
SECOND STATUS EDITION - February, 1973



Second Status Edition compiled and produced by the Map Production Division, Survey and Mapping Branch, Department of Lands, Forests, and Water Resources, Victoria, B.C. 1973

RESERVED LANDS
Boundaries: 10 meters
Less than 10 meters

Water Supply
Other Government Reserves

STANDARD MAP SYMBOLS
Advanced or covered by application under the Land Act

Indian Reserve
Timber or Pulp License, Licence, or Timber Sale

Municipal Boundary
Municipal Boundary (Proposed)

Historic Monument
Historic Monument (Proposed)

Post Office
School

Hospital
Church

Scale 1:125,000 or 1 inch to 2 miles approximately

Scale of Kilometres

Magnetic Declination approximately 79deg East at center of map 1973

Universal Transverse Mercator Projection
Declination approximately 7° annually

ROADS
Roads: Main, Secondary, Tertiary, Local

RAILWAYS
Railways: Main, Secondary, Tertiary, Local

WATER
Water: Main, Secondary, Tertiary, Local

INDEX TO ADJOINING SHEETS



INDEX TO ADJOINING SHEETS

Map Symbols

Map Symbols

Map Symbols

Map Symbols

Map Symbols

Map Symbols

KASLO, B.C.
MAP 82 FNE
SECOND STATUS EDITION