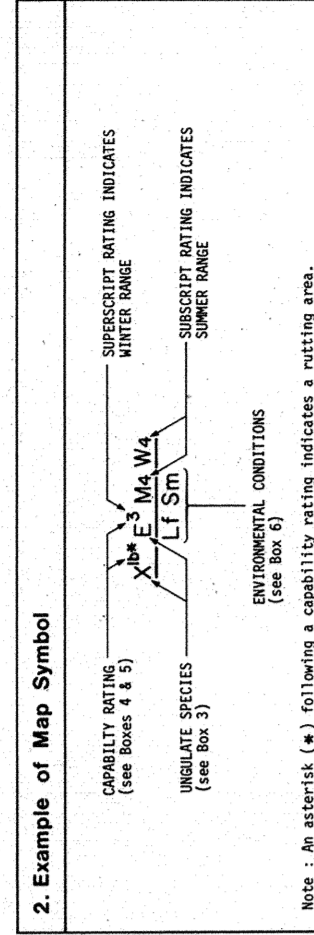


BIOPHYSICAL CLASSIFICATION FOR WILDLIFE CAPABILITY

1. Explanatory Notes
This map represents a biophysical classification of the Howser Creek area...
The biophysical classification is based on the following criteria...



3. Ungulate Species Symbols
A list of symbols used to represent different ungulate species on the map, including their scientific names and symbols.

4. Capability Classes
A list of capability classes (CLASS 1 to CLASS 5) with their corresponding symbols and descriptions of the terrain types they represent.

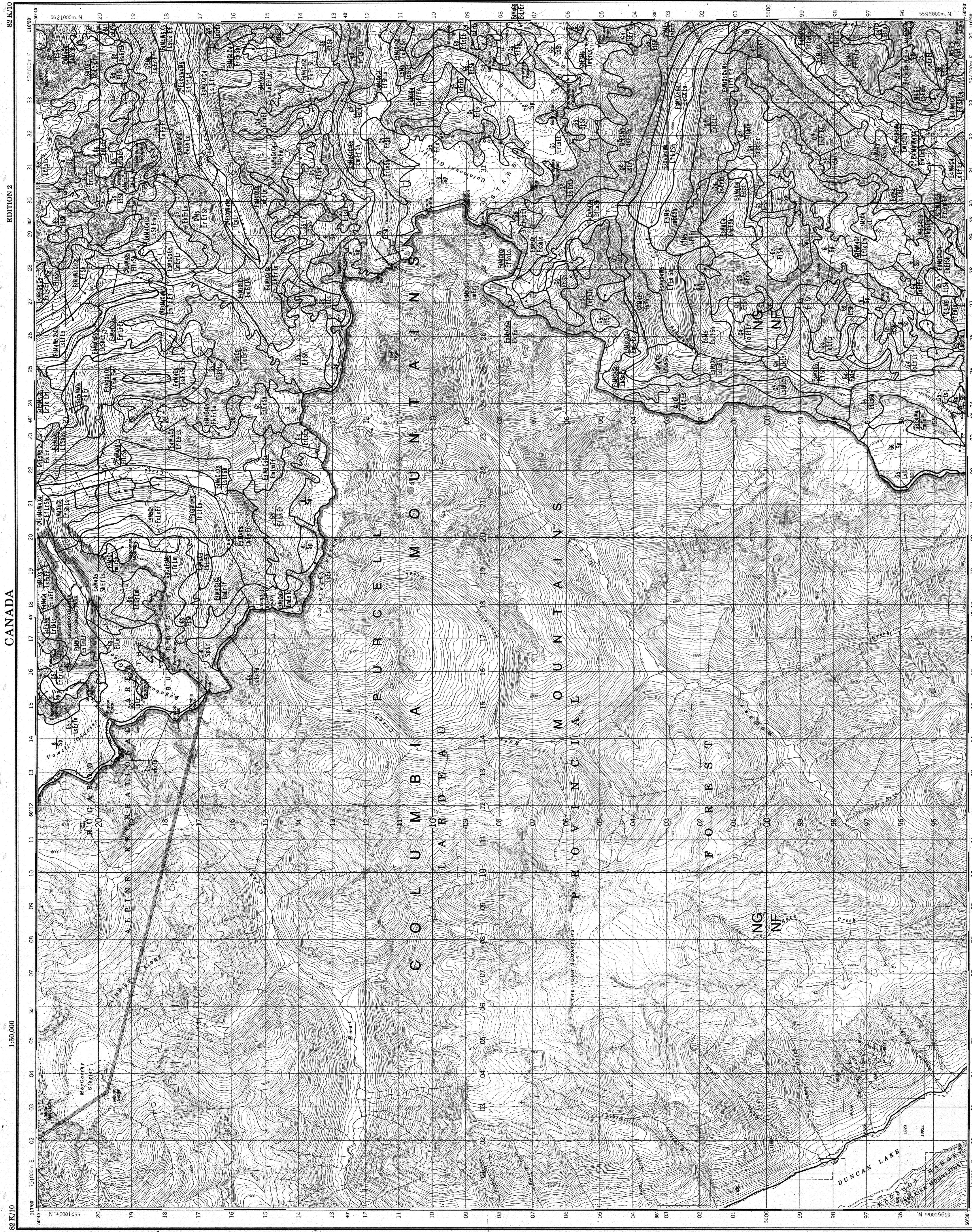
5. Biophysical Ungulate Class Carrying Capacity Estimates
A table with columns for Class, No. of ungulates per km², and No. of ungulates per 1000 ha. It lists carrying capacity estimates for various ungulate species across different biophysical classes.

6. Environmental Conditions
A list of environmental conditions that influence wildlife capability, such as slope, aspect, and vegetation cover.

7. Site Symbols
A list of symbols used to identify specific sites or features on the map, such as roads, trails, and water bodies.

8. References
A list of references used in the preparation of the map, including scientific papers, maps, and other sources.

9. Credits
A list of individuals and organizations that provided assistance or resources during the preparation of the map.



HOWSER CREEK
KOOTENAY LAND DISTRICT
BRITISH COLUMBIA
Map No. 82K/10
Scale 1:50,000
Map Date: 1985
Map Author: [Name]