

FISH SAMPLING RESULTS

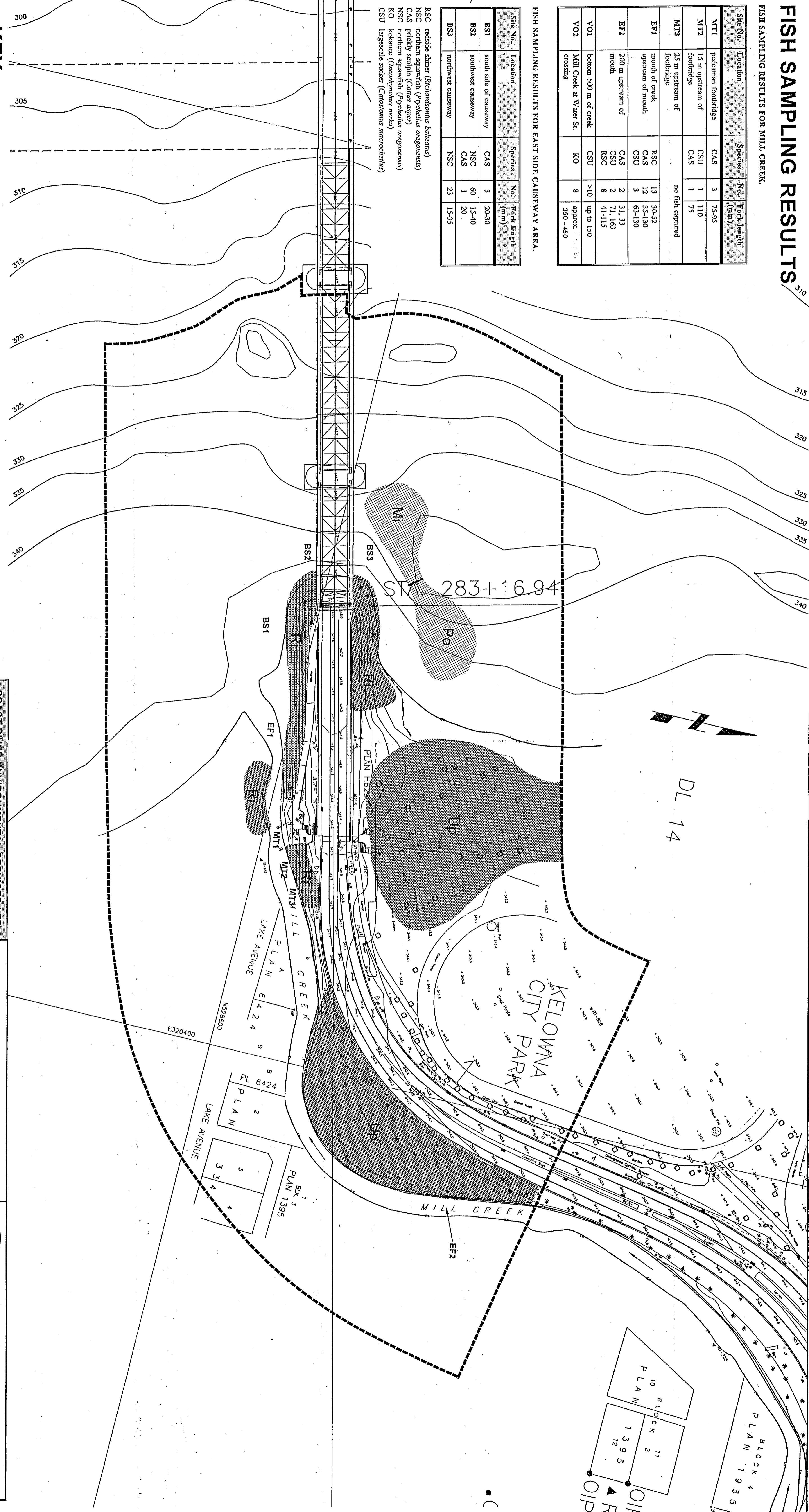
FISH SAMPLING RESULTS FOR MILL CREEK

Site No.	Location	Species	No.	Fork length (mm)
MT1	pedestrian footbridge	CAS	3	75-95
MT2	15 m upstream of footbridge	CSU	1	110
		CAS	1	75
MT3	25 m upstream of footbridge			no fish captured
EF1	mouth of creek upstream of mouth	RSC	13	30-52
		CAS	12	35-130
		CSU	3	63-130
EF2	200 m upstream of mouth	CAS	2	31, 33
		CSU	2	71, 163
		RSC	8	41-115
VO1	bottom 500 m of creek	CSU	>10	up to 150
VO2	Mill Creek at Water St crossing	KO	8	approx. 350-450

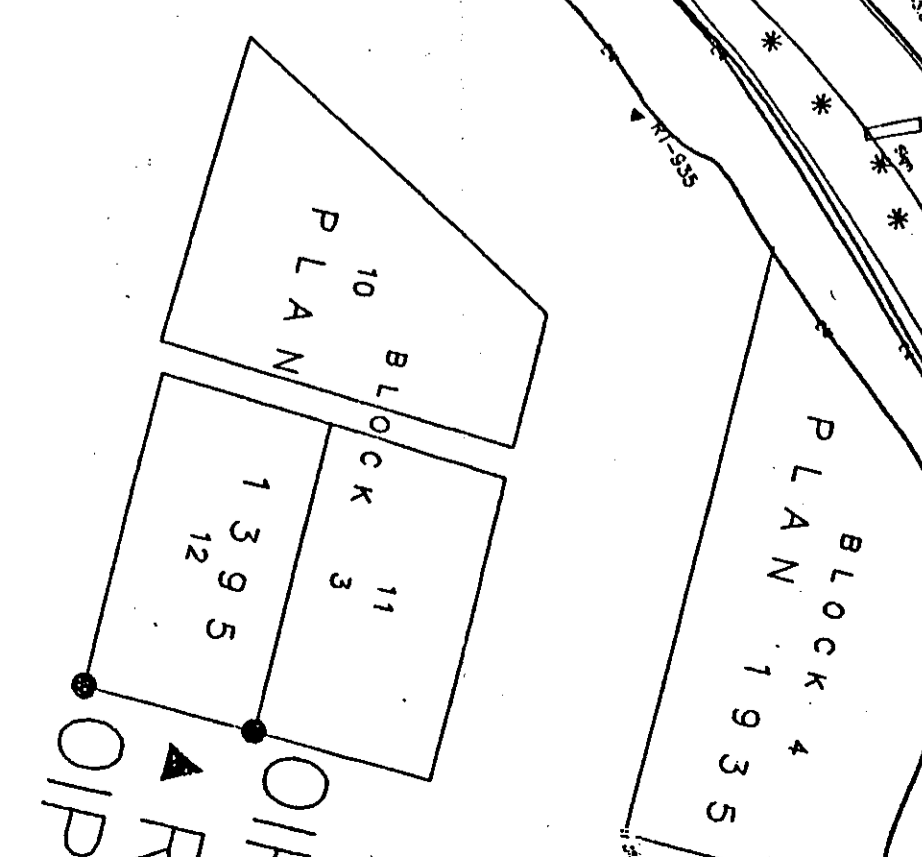
FISH SAMPLING RESULTS FOR EAST SIDE CAUSEWAY AREA.

Site No.	Location	Species	No.	Fork length (mm)
BS1	south side of causeway	CAS	3	20-30
BS2	southwest causeway	NSC	60	15-40
		CAS	1	20
BS3	northwest causeway	NSC	23	15-35

RSC redside darter (*Petichandona boltonis*)
 NSC northern squawfish (*Ptychocheilus oregonensis*)
 CAS prickly sculpin (*Cottus asper*)
 NSC northern squawfish (*Ptychocheilus oregonensis*)
 KO kokanee (*Oncorhynchus nerka*)
 CSU largescale sucker (*Catostomus macrocheilus*)



DL 14



COAST RIVER ENVIRONMENTAL SERVICES LTD.
 628 WEST 22ND AVENUE, VANCOUVER, BRITISH COLUMBIA V6N 2G9
 telephone (604) 879-5593 fax (604) 879-5594

Westmar Consultants Inc.
 Consulting Engineers - North Vancouver, B.C., Canada, Tel. (604) 885-6488

Province of British Columbia
 MINISTRY OF TRANSPORTATION AND HIGHWAYS
 BRIDGE ENGINEERING BRANCH

OKANAGAN DISTRICT
 OKANAGAN LAKE BRIDGE NO.1458
 EXISTING BRIDGE
 SHEET 1

SCALE 1:750

Rev	Date	Description	DESIGNED	CHECKED	DATE

REVISIONS

Rev	Date	Description	DESIGNED	CHECKED	DATE

PREPARED BY: _____

RECOMMENDED: _____

ACCEPTED FOR CONSTRUCTION: _____

FILE No. _____

DIRECTOR OF BRIDGE ENGINEERING: _____

DATE: _____

HEADLINE No. _____

RES. _____

DRAWING No. _____

EN1

Drawing No.: EW-2 Date: November 1995 Scale: 1:750

CANCEL PERM

CANCEL PRINTS BEARING PREVIOUS LETTER