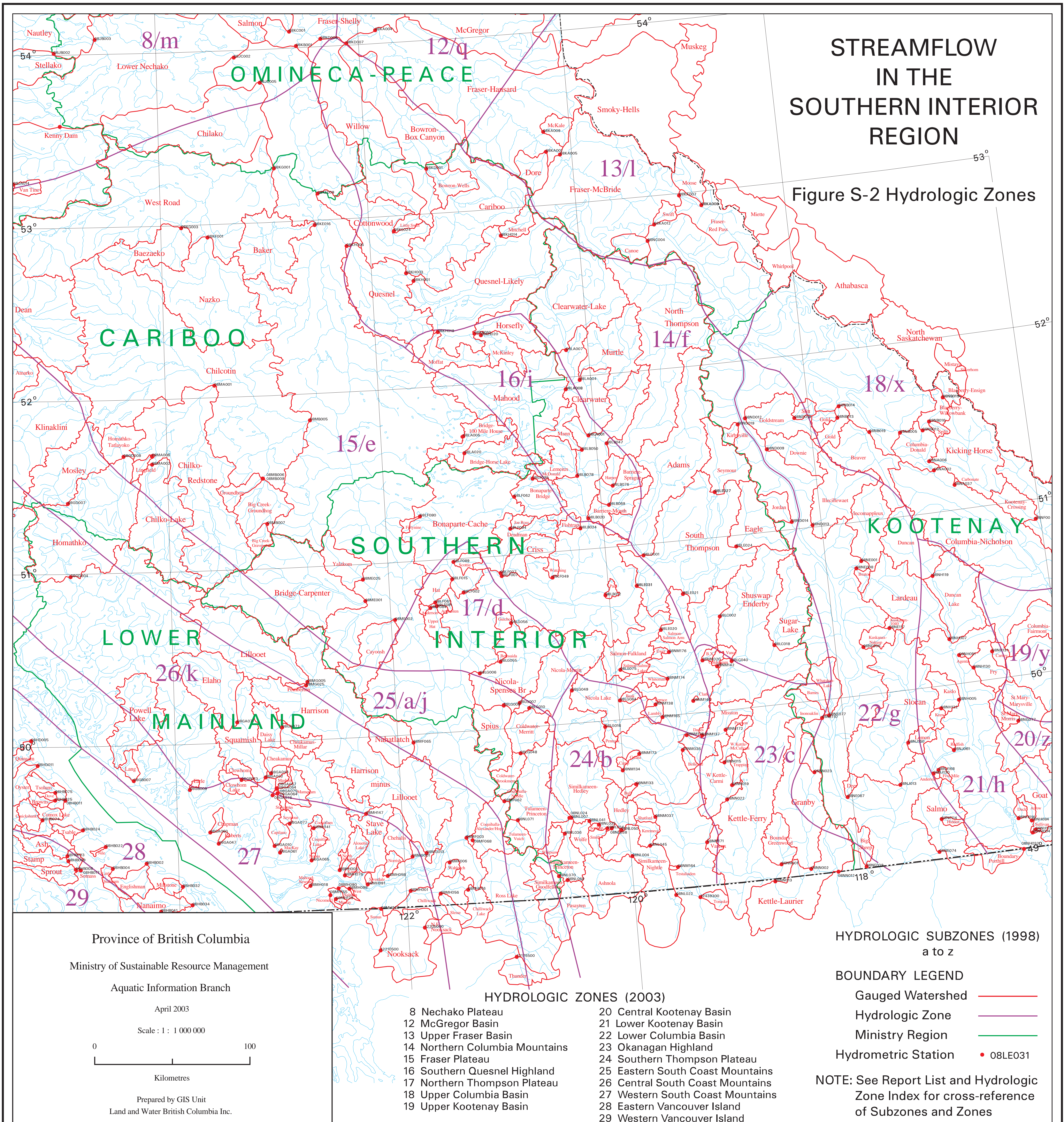


STREAMFLOW IN THE SOUTHERN INTERIOR REGION

Figure S-2 Hydrologic Zones



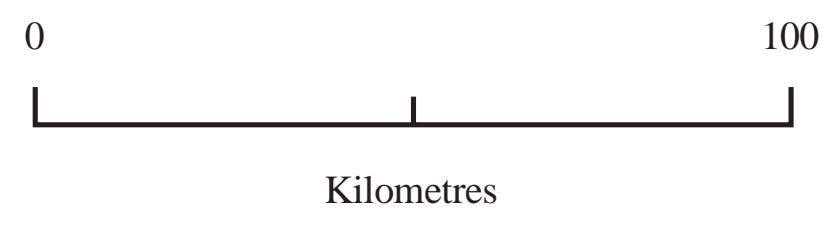
Province of British Columbia

Ministry of Sustainable Resource Management

Aquatic Information Branch

April 2003

Scale: 1 : 1 000 000



Prepared by GIS Unit
Land and Water British Columbia Inc.

HYDROLOGIC ZONES (2003)

- | | |
|--------------------------------|----------------------------------|
| 8 Nechako Plateau | 20 Central Kootenay Basin |
| 12 McGregor Basin | 21 Lower Kootenay Basin |
| 13 Upper Fraser Basin | 22 Lower Columbia Basin |
| 14 Northern Columbia Mountains | 23 Okanagan Highland |
| 15 Fraser Plateau | 24 Southern Thompson Plateau |
| 16 Southern Quesnel Highland | 25 Eastern South Coast Mountains |
| 17 Northern Thompson Plateau | 26 Central South Coast Mountains |
| 18 Upper Columbia Basin | 27 Western South Coast Mountains |
| 19 Upper Kootenay Basin | 28 Eastern Vancouver Island |
| | 29 Western Vancouver Island |

HYDROLOGIC SUBZONES (1998) a to z

BOUNDARY LEGEND

- Gauged Watershed —
- Hydrologic Zone —
- Ministry Region —
- Hydrometric Station • 08LE031

NOTE: See Report List and Hydrologic Zone Index for cross-reference of Subzones and Zones