

1. Explanatory Notes

The biophysical classification is based on the following criteria: (1) the physical environment, (2) the biological environment, and (3) the human environment. The physical environment includes topography, climate, and soil. The biological environment includes vegetation, wildlife, and insects. The human environment includes land use, population, and infrastructure.

The biophysical classification is a map showing the distribution of biophysical classes across the study area. The map is divided into cells, each of which is assigned a biophysical class code. The codes are based on the following criteria: (1) the physical environment, (2) the biological environment, and (3) the human environment.

2. Example of Map Symbol

3. Ungulate Species Symbols

Symbol for Moose: A solid black circle.

Symbol for Elk: A solid black square.

Symbol for Caribou: A solid black triangle.

Symbol for Sheep: A solid black diamond.

Symbol for Goat: A solid black hexagon.

Symbol for Horse: A solid black octagon.

Symbol for Deer: A solid black circle with a dot in the center.

Symbol for Wild Horse: A solid black circle with a horizontal line through the center.

Symbol for Pronghorn: A solid black circle with a vertical line through the center.

Symbol for Bison: A solid black circle with a horizontal line through the center and a vertical line through the center.

Symbol for Buffalo: A solid black circle with a horizontal line through the center and a vertical line through the center.

Symbol for Antelope: A solid black circle with a horizontal line through the center and a vertical line through the center.

Symbol for Gazelle: A solid black circle with a horizontal line through the center and a vertical line through the center.

Symbol for Kudu: A solid black circle with a horizontal line through the center and a vertical line through the center.

Symbol for Impresso: A solid black circle with a horizontal line through the center and a vertical line through the center.

Symbol for Topi: A solid black circle with a horizontal line through the center and a vertical line through the center.

Symbol for Oryx: A solid black circle with a horizontal line through the center and a vertical line through the center.

Symbol for Addax: A solid black circle with a horizontal line through the center and a vertical line through the center.

Symbol for Kudu: A solid black circle with a horizontal line through the center and a vertical line through the center.

Symbol for Impresso: A solid black circle with a horizontal line through the center and a vertical line through the center.

Symbol for Topi: A solid black circle with a horizontal line through the center and a vertical line through the center.

Symbol for Oryx: A solid black circle with a horizontal line through the center and a vertical line through the center.

Symbol for Addax: A solid black circle with a horizontal line through the center and a vertical line through the center.

4. Capability Classes

CLASS 1: Land in this class has very high capability to support the wild ungulate species. When present, this class may be subdivided on the basis of productivity into Class 1a, 1b, and 1c.

CLASS 2: Land in this class has high capability to support the wild ungulate species.

CLASS 3: Land in this class has moderate capability to support the wild ungulate species.

CLASS 4: Land in this class has low capability to support the wild ungulate species.

CLASS 5: Land in this class has very low capability to support the wild ungulate species.

5. Biophysical Ungulate Capacity Class Carrying Capacity Estimates

Class	Ungulate Species	Carrying Capacity (Animals/1000 Ha)
CLASS 1	Elk	10-15
	Caribou	10-15
	Deer	10-15
CLASS 2	Elk	5-10
	Caribou	5-10
	Deer	5-10
CLASS 3	Elk	2-5
	Caribou	2-5
	Deer	2-5
CLASS 4	Elk	1-2
	Caribou	1-2
	Deer	1-2
CLASS 5	Elk	0-1
	Caribou	0-1
	Deer	0-1

6. Environmental Conditions

The biophysical classification is based on the following environmental conditions: (1) physical environment, (2) biological environment, and (3) human environment. The physical environment includes topography, climate, and soil. The biological environment includes vegetation, wildlife, and insects. The human environment includes land use, population, and infrastructure.

7. On-Site Symbols

Symbol for On-Site: A solid black circle with a dot in the center.

8. References

For a more detailed description of the classification system, the reader should refer to the following references: (1) [Reference 1], (2) [Reference 2], (3) [Reference 3].

9. Credits

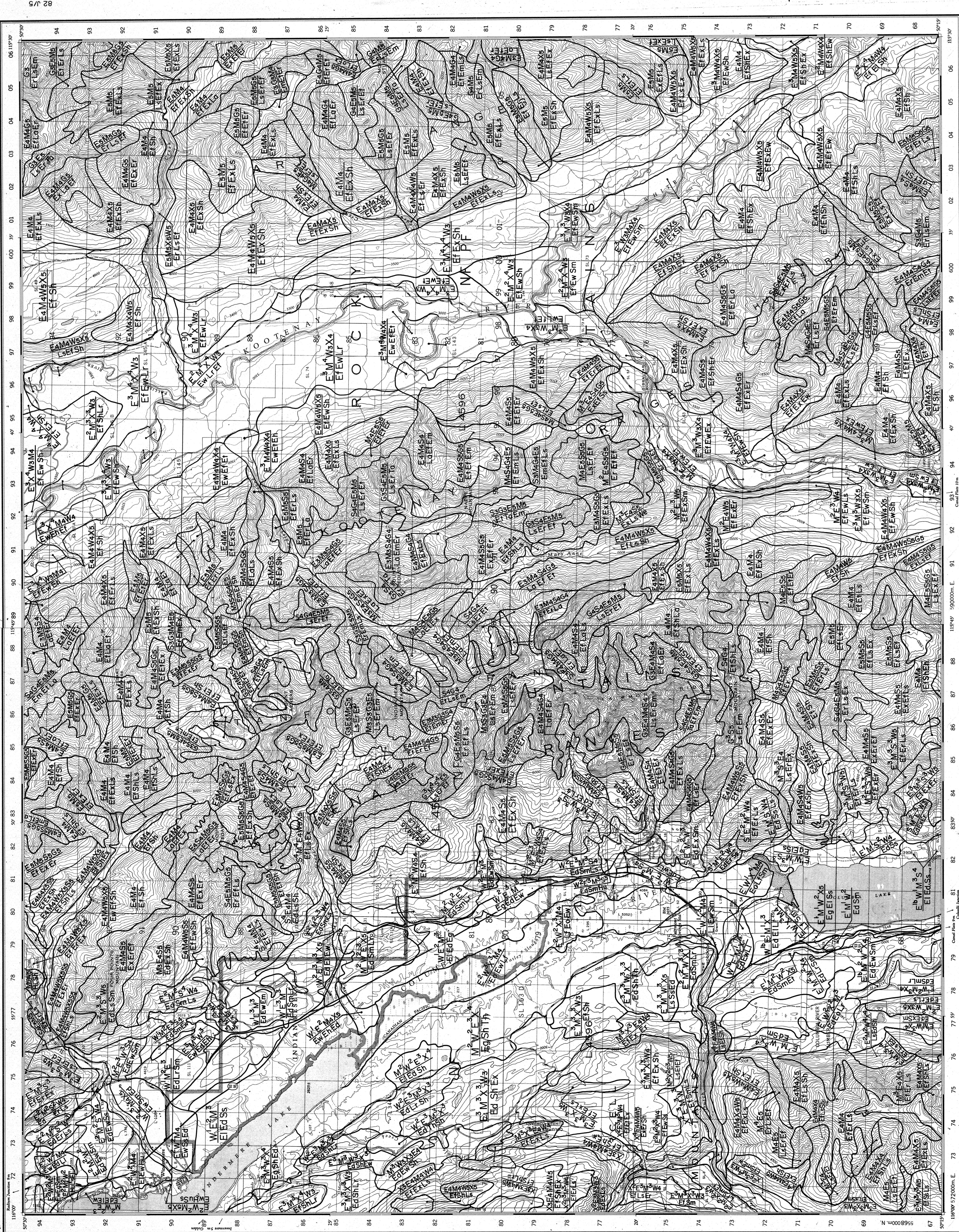
Prepared by: [Name]

Date: [Date]

Project: [Project Name]

Contract: [Contract Number]

Scale: 1:50,000



1. Explanatory Notes

The biophysical classification is based on the following criteria: (1) the physical environment, (2) the biological environment, and (3) the human environment. The physical environment includes topography, climate, and soil. The biological environment includes vegetation, wildlife, and insects. The human environment includes land use, population, and infrastructure.

The biophysical classification is a map showing the distribution of biophysical classes across the study area. The map is divided into cells, each of which is assigned a biophysical class code. The codes are based on the following criteria: (1) the physical environment, (2) the biological environment, and (3) the human environment.

2. Example of Map Symbol

3. Ungulate Species Symbols

Symbol for Moose: A solid black circle.

Symbol for Elk: A solid black square.

Symbol for Caribou: A solid black triangle.

Symbol for Sheep: A solid black diamond.

Symbol for Goat: A solid black hexagon.

Symbol for Horse: A solid black octagon.

Symbol for Deer: A solid black circle with a dot in the center.

Symbol for Wild Horse: A solid black circle with a horizontal line through the center.

Symbol for Pronghorn: A solid black circle with a vertical line through the center.

Symbol for Bison: A solid black circle with a horizontal line through the center and a vertical line through the center.

Symbol for Buffalo: A solid black circle with a horizontal line through the center and a vertical line through the center.

Symbol for Antelope: A solid black circle with a horizontal line through the center and a vertical line through the center.

Symbol for Gazelle: A solid black circle with a horizontal line through the center and a vertical line through the center.

Symbol for Kudu: A solid black circle with a horizontal line through the center and a vertical line through the center.

Symbol for Impresso: A solid black circle with a horizontal line through the center and a vertical line through the center.

Symbol for Topi: A solid black circle with a horizontal line through the center and a vertical line through the center.

Symbol for Oryx: A solid black circle with a horizontal line through the center and a vertical line through the center.

Symbol for Addax: A solid black circle with a horizontal line through the center and a vertical line through the center.

Symbol for Kudu: A solid black circle with a horizontal line through the center and a vertical line through the center.

Symbol for Impresso: A solid black circle with a horizontal line through the center and a vertical line through the center.

Symbol for Topi: A solid black circle with a horizontal line through the center and a vertical line through the center.

Symbol for Oryx: A solid black circle with a horizontal line through the center and a vertical line through the center.

Symbol for Addax: A solid black circle with a horizontal line through the center and a vertical line through the center.

4. Capability Classes

CLASS 1: Land in this class has very high capability to support the wild ungulate species. When present, this class may be subdivided on the basis of productivity into Class 1a, 1b, and 1c.

CLASS 2: Land in this class has high capability to support the wild ungulate species.

CLASS 3: Land in this class has moderate capability to support the wild ungulate species.

CLASS 4: Land in this class has low capability to support the wild ungulate species.

CLASS 5: Land in this class has very low capability to support the wild ungulate species.

5. Biophysical Ungulate Capacity Class Carrying Capacity Estimates

Class	Ungulate Species	Carrying Capacity (Animals/1000 Ha)
CLASS 1	Elk	10-15
	Caribou	10-15
	Deer	10-15
CLASS 2	Elk	5-10
	Caribou	5-10
	Deer	5-10
CLASS 3	Elk	2-5
	Caribou	2-5
	Deer	2-5
CLASS 4	Elk	1-2
	Caribou	1-2
	Deer	1-2
CLASS 5	Elk	0-1
	Caribou	0-1
	Deer	0-1

6. Environmental Conditions

The biophysical classification is based on the following environmental conditions: (1) physical environment, (2) biological environment, and (3) human environment. The physical environment includes topography, climate, and soil. The biological environment includes vegetation, wildlife, and insects. The human environment includes land use, population, and infrastructure.

7. On-Site Symbols

Symbol for On-Site: A solid black circle with a dot in the center.

8. References

For a more detailed description of the classification system, the reader should refer to the following references: (1) [Reference 1], (2) [Reference 2], (3) [Reference 3].

9. Credits

Prepared by: [Name]

Date: [Date]

Project: [Project Name]

Contract: [Contract Number]

Scale: 1:50,000

