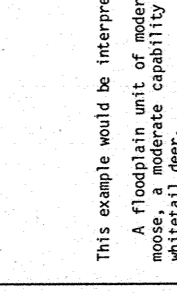


BIOPHYSICAL CLASSIFICATION FOR WILDLIFE CAPABILITY

1. Explanatory Notes
This map represents a biophysical classification for wildlife capability...



3. Ungulate Species Symbols
This symbol is used to indicate the presence of ungulate species...

4. Capability Classes
CLASS 1 Lands in this class have very high capability to support the assigned ungulate species...

Table with 4 columns: Soil, Slope, Aspect, and Capability Class. It lists various soil types and their corresponding capability classes.

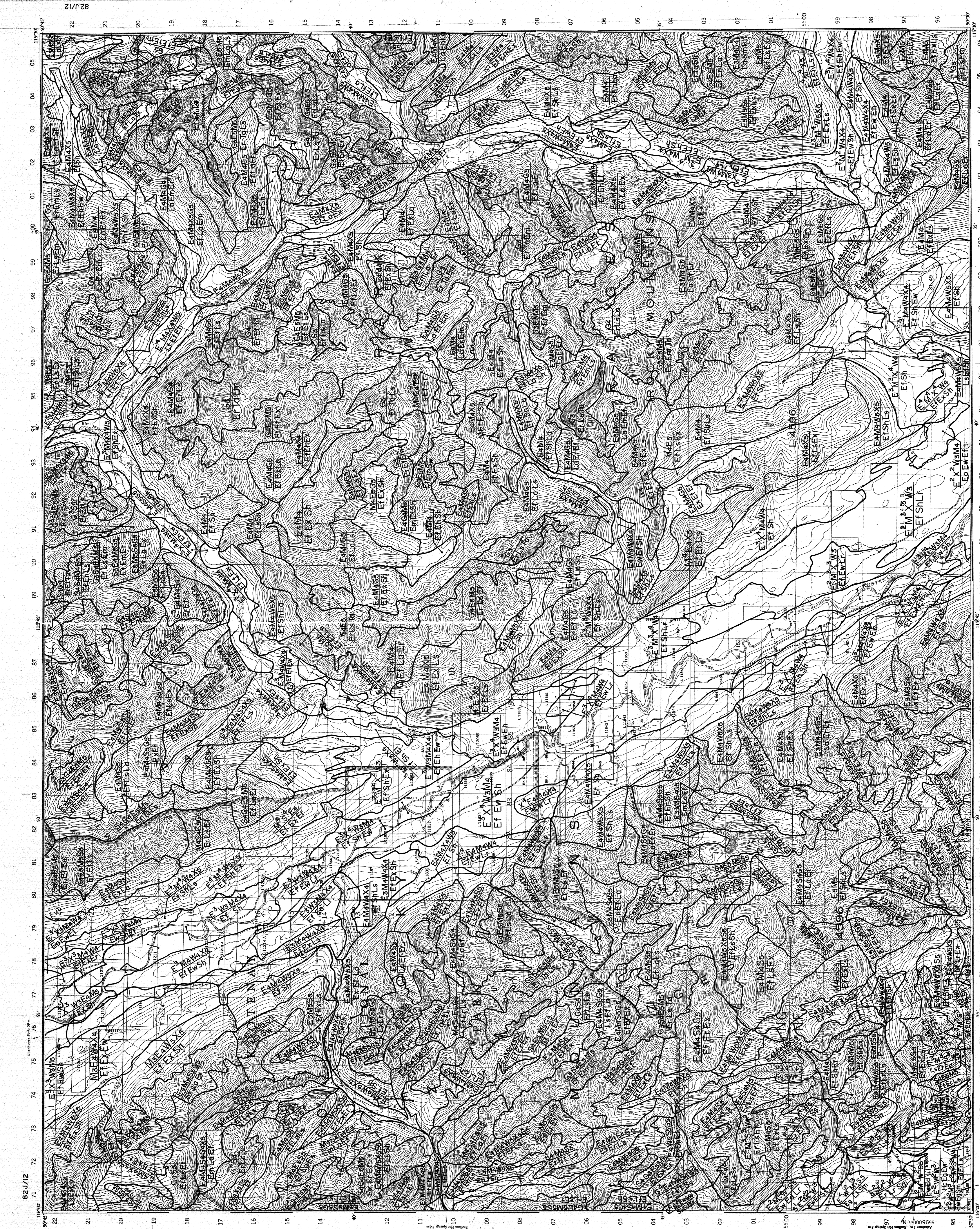
5. Biophysical Ungulate Capacity Class Carrying Capacity Estimates
This table provides carrying capacity estimates for different ungulate species across various biophysical classes.

6. Environmental Conditions
This section describes the environmental conditions that influence wildlife capability, such as climate and vegetation.

7. On-Site Symbols
This section defines the symbols used on the map to represent specific site characteristics.

8. References
This section lists the sources of data and information used in the development of the map.

9. Credits
This section acknowledges the individuals and organizations that provided support and resources for the project.



Map title: TANGLE PEAK, KOOTENAY DISTRICT, BRITISH COLUMBIA. Includes scale (1:50,000), north arrow, and grid coordinates.

Map metadata including author (D.A. Dancoff), date (March 1980), and publication details. Includes a small table of symbols and a legend.