

INTERPRETIVE MAP

FINS/Babine Forest Products
Fish and Fish Habitat Inventory
Shovel/Maxan
Mapsheet 093K024

Map 5 of 6
SCALE 1 : 20,000

KILOMETRES

Projection: ALBERS EQUAL AREA

PRINTED: May 03, 2001

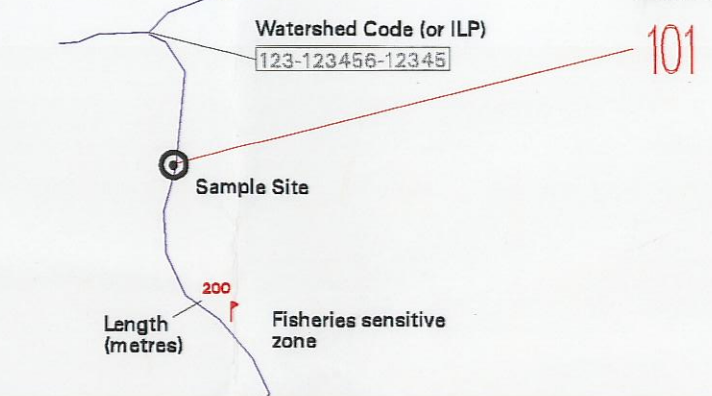
AML - y:\active\fin\am\l\fin\ff\interp99(supp).aml
Supplement AML - y:\active\fin\am\l\fin\ff\interp99(supp).aml

PREPARED BY:

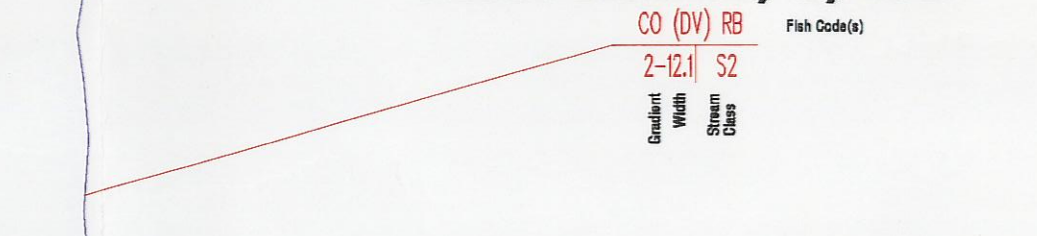


Stream Information Summary

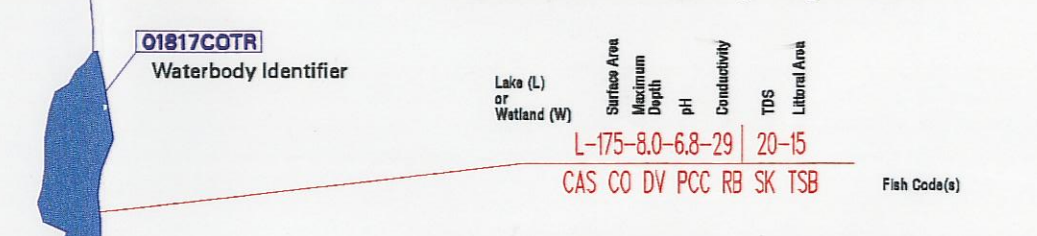
Site Data Symbol



Reach Summary Symbol



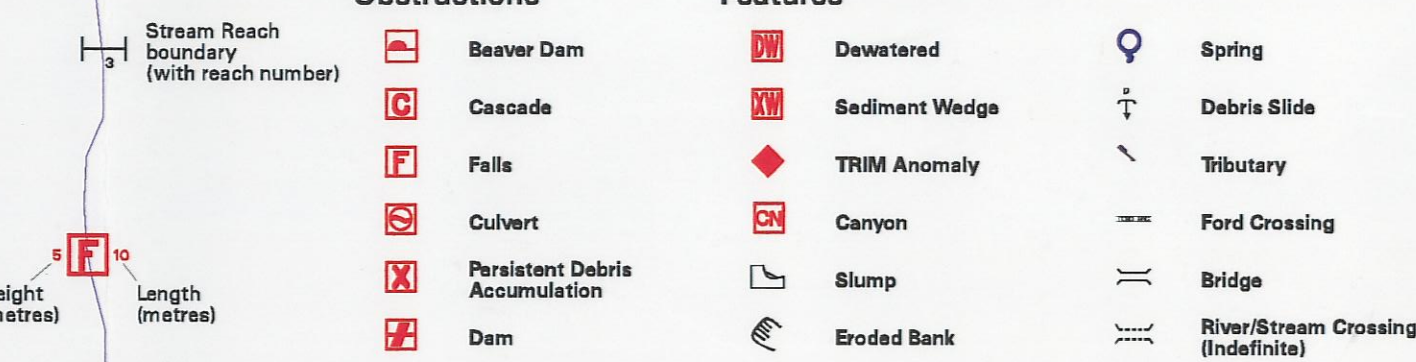
Lake Summary Symbol



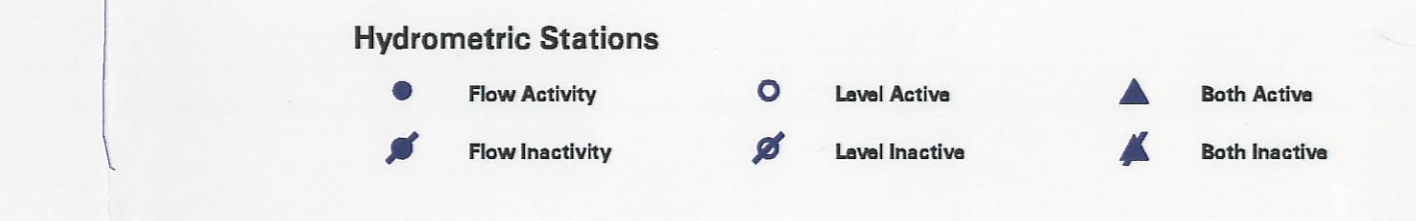
Enhancement / Management Activities



Obstructions



Hydrometric Stations



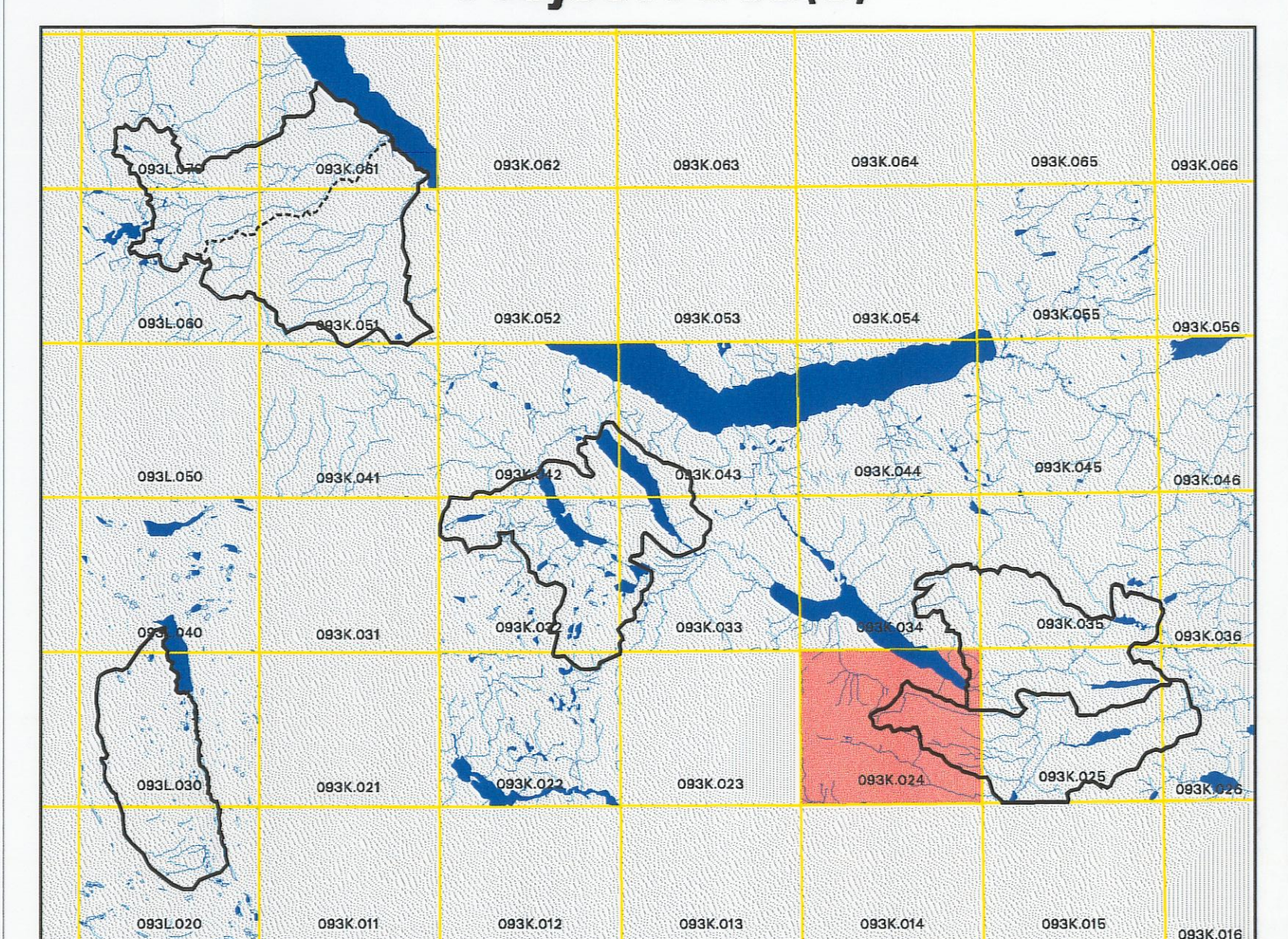
Features



TRIM Features



Project Area(s)



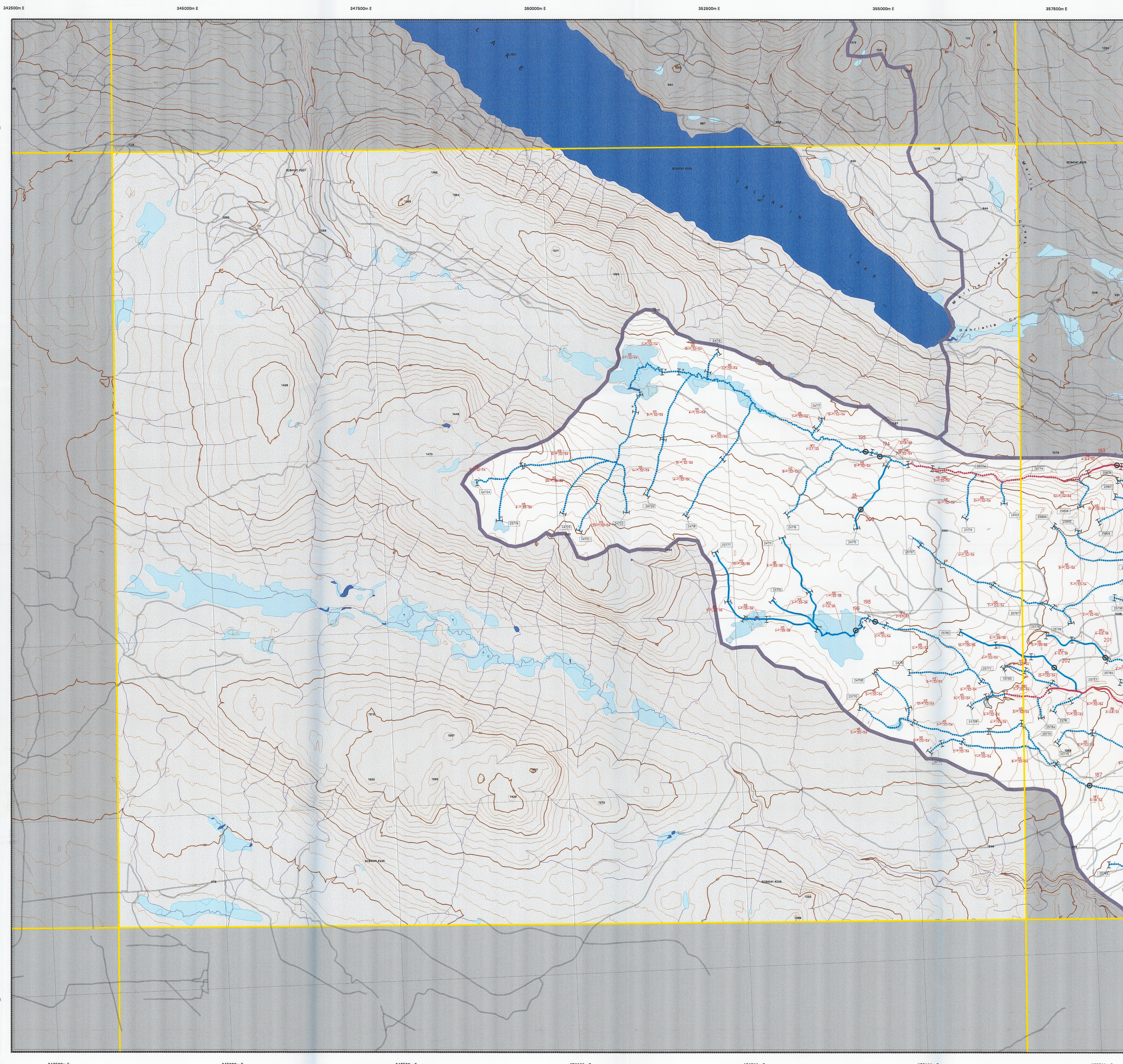
Source Information

BASE: TR
LOC: APE
HAB: INV
FISH: INV
DATE INV: October 10 - 28, 1999

STR SYM: INV
LX SYM: INV
INV MGME: MELP

MAPPING STANDARDS: BC, Ministry of Fisheries - "Standards for Fish and Fish Habitat Maps"
VERSION: 2.0
DATE: May 1998

MAP ACCURACY IS PLUS OR MINUS 20 METRES



Fish Species Codes

DVBT	Dolly Varden/Bull Trout	KO	Kokanee	WCT	Westlope Cutthroat Trout
CT	Cutthroat Trout	LKC	Lake Chub	SU	General Sucker
RB	Rainbow Trout	BB	Burbot	CO	Confined
TSL	Threespine Stickleback	CAS	Prickly Sculpin	FC	Frequently Confined
CAL	Coastrange Sculpin	C	General Minnows	OC	Occasionally Confined
PK	Pink Salmon	SK	Sockeye Salmon	UN	Unconfined
SP	Spine	CSU	Largescale Sucker	N/A	Not Applicable
CCG	Slimy Sculpin	CO	Coho Salmon		
WF	White Fish General	CC	General Sculpin		
		(I)	Presumed fish presence		

Stream Confinement Codes

Stream Pattern Codes

Stream Morphology Codes

Substrate Codes

Disturbance Indicator Codes

EN	Entrenched	ST	Straight	RP	Rifle Pool	F	Fines <2mm	O1	Beaver Dams	D1	Small woody debris
CO	Confined	SI	Sinuuous	CP	Cascade Pool	G	Gravels 2-64mm	O2	Abandoned Channels	D2	Large woody debris
FC	Frequently Confined	IR	Irregular, wandering	SP	Step Pool	C	Cobbles 64-256mm	B2	Eroding Banks	D3	Recently formed LWD jams
OC	Occasionally Confined	IM	Irregular, meandering	LC	Large Channel	B	Boulders >256mm	B3	Avulsions	S1	Homogeneous bed texture
UN	Unconfined	ME	Regular meander			R	Rock >4000mm	C1	Extensive Riffles or Cascades	S2	Sediment fingers
N/A	Not Applicable	TM	Tortuous meanders					C2	Minimal Pool Area	S3	Sediment wedges
								C3	Elevated Mid-channel Bar	S4	Extensive bars
								C4	Multiple Channels or Bars	S5	Extensively scoured zones
								C5	Disturbed Stone Lines		

This product has been accepted as being in accordance with approved standards within the limits of Ministry quality assurance procedures. Users are cautioned that interpreted information on this product developed for the purposes of the Forest Practices Code Act and Regulations, for example stream classifications, is subject to review by a statutory decision maker for the purpose of determining whether or not to approve an operational plan.