

Sensitive Ecosystem Inventory

West Island Timberlands

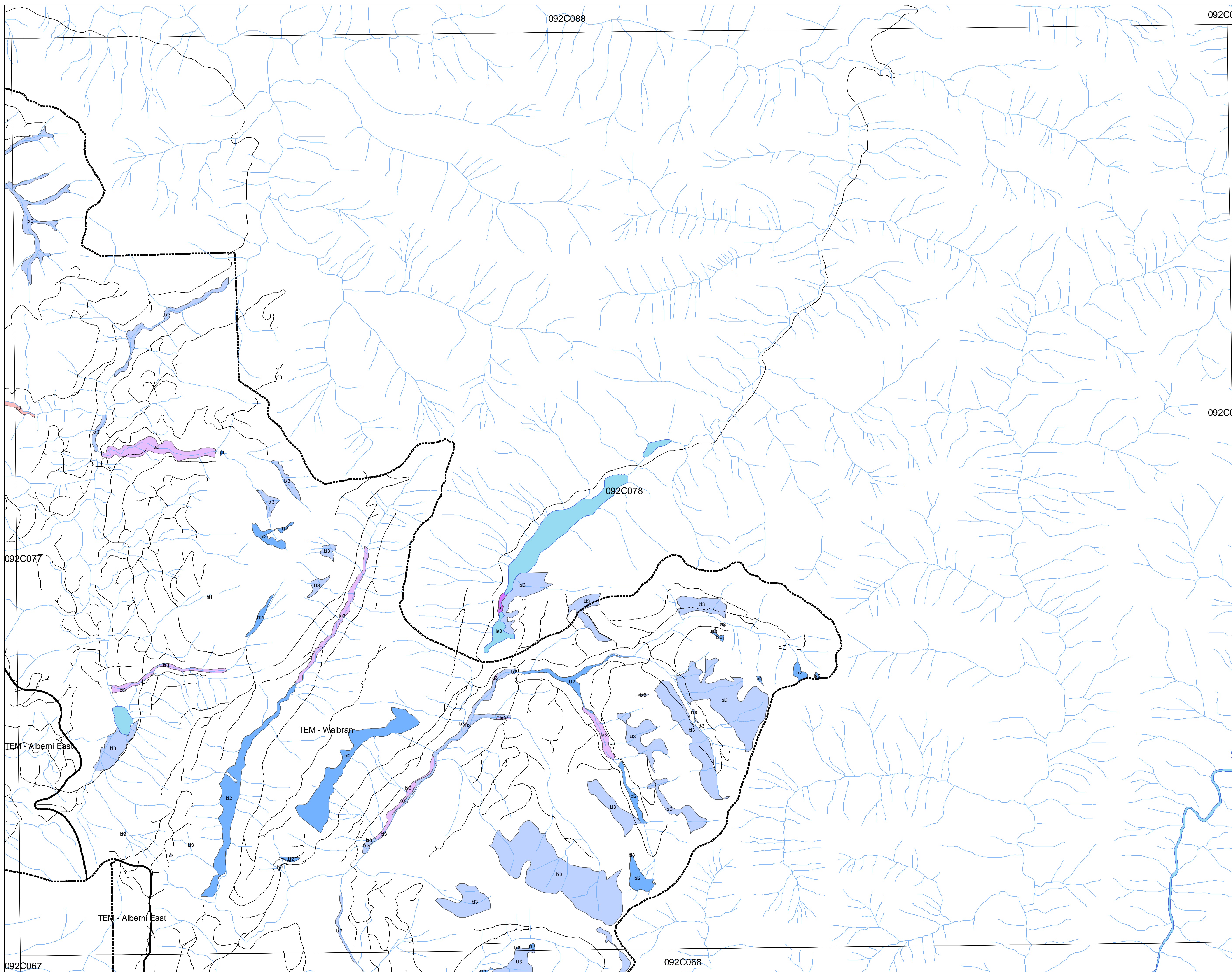
Legend

SEI Classification

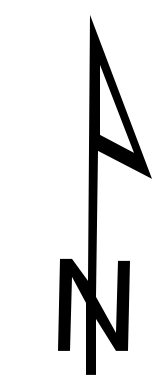
- Red List - > 70% Area
- Red List - 30% - 70% Area
- Red List - < 30% Area
- Blue List - > 70% Area
- Blue List - 30% - 70% Area
- Blue List - < 30% Area
- Landscape Rarity - 0 - 10 ha
- Landscape Rarity - 10 - 50 ha
- Landscape Rarity - 50 - 210 ha
- Cliffs
- Sparsely Vegetated
- Wetland
- Riparian
- Woodland

Other Features

- Roads
- Streams
- TEM Project Boundary
- Water
- 1:20000 Mapsheet



Plot Date: March 30, 2004



1:20,000

<p>Cliffs CL</p> <p>cc coastal cliffs ic inland cliffs</p> <p>Sparsely Vegetated / Herbaceous S/VHB</p> <p>hg* Herbaceous: a mix of grasses and forbs, as well as mosses and lichens cs Coastal herbaceous: windswept shorelines and slopes influenced by proximity to the ocean sg Spt: sand and gravel deposits with low to moderate cover of grasses and herbs du Dunes: sand dunes with low cover of grasses and herbs sh Shrub: shrubs account for more than 20% of the vegetation ta Talus slopes ap Alpine</p> <p>hg1 > 50% RO, hg2 20% - 40% RO, hg3 10% RO</p>	<p>Wetland WN</p> <p>Areas characterized by daily, seasonal or year-round water at or over the surface.</p> <p>bg Bog fn Fen sp Swamp sw Shallow water es Estuary un Undifferentiated wetland</p>	<p>Riparian RI</p> <p>Streamside areas along creeks, streams, and larger floodplains.</p> <p>rl low bench: areas flooded at least once every 2 years for part of the growing season fm medium bench: areas flooded every 1 - 6 years for short periods; usually deciduous or mixed fh high bench: areas periodically and briefly inundated by high waters; typically conifer-dominated</p>	<p>Woodland WD</p> <p>Dry, open stands of woodland, generally with between 10 - 25% tree cover</p> <p>mx Mixed conifer - deciduous</p>	<p>Rare Communities RC</p> <p>Rare plant communities or site series of rare occurrence within the DFA</p> <p>r1 Red-listed, CDC r2 Blue-listed, CDC r3 Class 1 Landscape rarity within the DFA (TFL44) - less than 10 ha r4 Class 2 Landscape rarity within the DFA (TFL44) - 10 to 50 ha r5 Class 3 Landscape rarity within the DFA (TFL44) - 50 to 210 ha</p>
--	--	---	---	--

Map Note
Inquiries relating to this map should be directed to Weyerhaeuser, West Island Timberlands Planning Group, 3406 3rd Avenue, Fort Albert, B.C. V9Y 4E5

Disclaimer
Although we take great care in the preparation of this information and are confident that it is accurate, we do not give any warranty as to its accuracy or suitability for any purpose that it might be used for. Users assume the risk associated with the accuracy and results of the contents of this document.