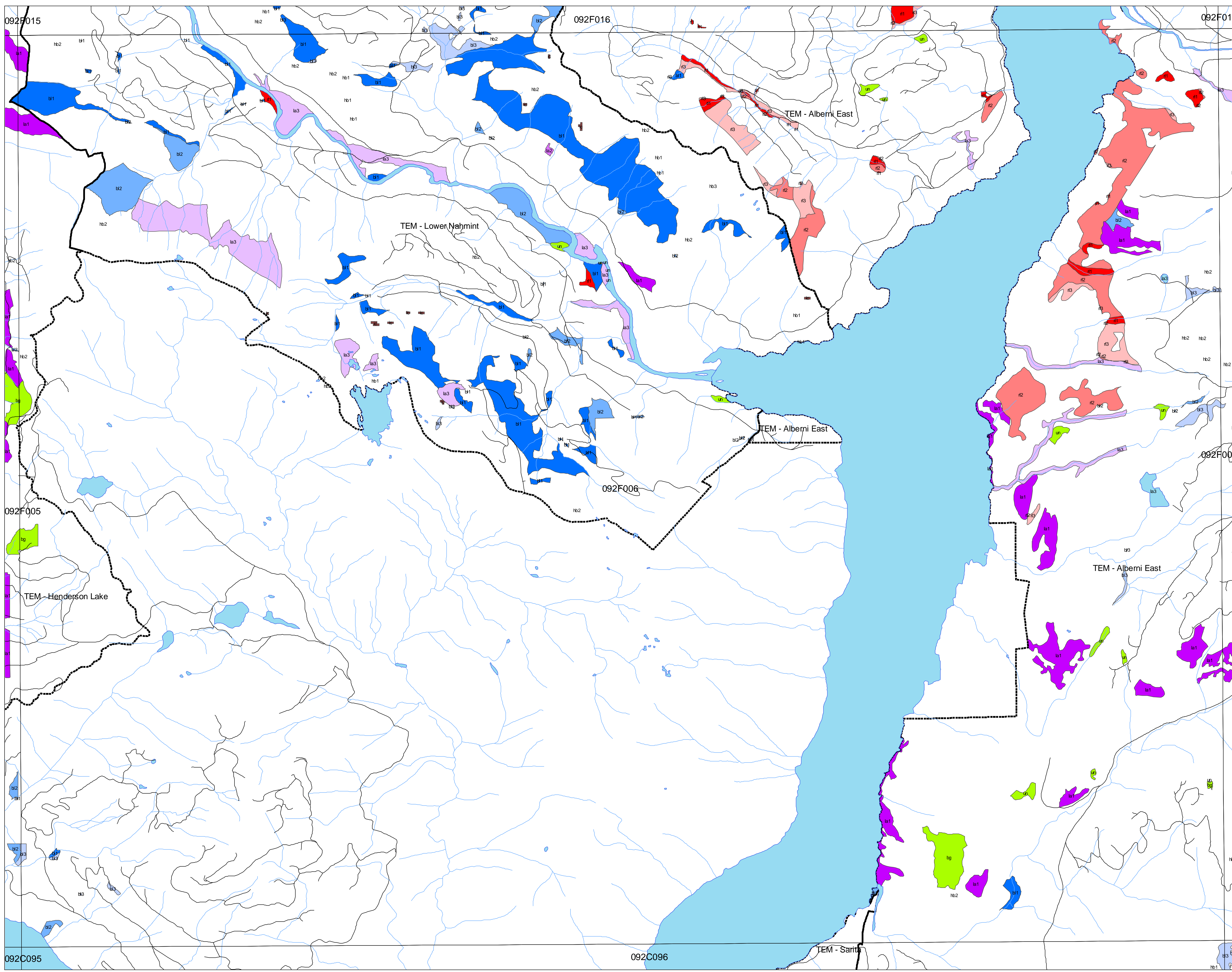


Sensitive Ecosystem Inventory

West Island Timberlands



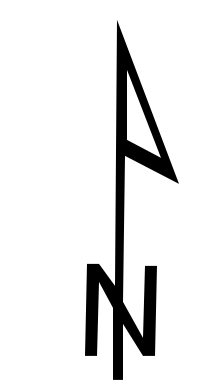
Legend

- SEI Classification**
- Red List - > 70% Area
 - Red List - 30% - 70% Area
 - Red List - < 30% Area
 - Blue List - > 70% Area
 - Blue List - 30% - 70% Area
 - Blue List - < 30% Area
 - Landscape Rarity - 0 - 10 ha
 - Landscape Rarity - 10 - 50 ha
 - Landscape Rarity - 50 - 210 ha
 - Cliffs
 - Sparsely Vegetated
 - Wetland
 - Riparian
 - Woodland

Other Features

- Roads
- Streams
- TEM Project Boundary
- Water
- 1:20000 Mapsheet

Plot Date: March 30, 2004



1:20,000

Cliffs CL cc coastal cliffs ic inland cliffs	Cliffs CL Steep slopes, often with exposed bedrock.	Sparsely Vegetated / Herbaceous S/HB hb* cs sg du sh ta ap hb1 > 50% RO, hb2 20% - 40% RO, hb3 10% RO	Non-forested ecosystems with <10% tree cover. Most have shallow soils and bedrock outcrops. hb* cs sg du sh ta ap hb1 > 50% RO, hb2 20% - 40% RO, hb3 10% RO	Wetland WN bg fn sp sw es un	Wetland WN Area characterized by daily, seasonal or year-round water at or over the surface. bg Bog fn Fen sp Swamp sw Shallow water es Estuary un Undifferentiated wetland	Riparian RI rl fm fh	Riparian RI Streamside areas along creeks, streams, and larger floodplains. rl low bench: areas flooded at least once every 2 years for part of the growing season fm medium bench: areas flooded every 1 - 6 years for short periods; usually deciduous or mixed fh High bench: areas periodically and briefly inundated by high waters; typically conifer-dominated	Woodland WD mx	Woodland WD Dry, open stands of woodland, generally with between 10 - 25% tree cover. mx Mixed conifer - deciduous	Rare Communities RC r1 r2 r3 l1 l2 l3	Rare Communities RC Rare plant communities or site series of rare occurrence within the DFA. r1 Red-list, CDC r2 Blue-list, CDC l1 Class 1 Landscape rarity within the DFA (TFL44) - less than 10 ha l2 Class 2 Landscape rarity within the DFA (TFL44) - 10 to 50 ha l3 Class 3 Landscape rarity within the DFA (TFL44) - 50 to 210 ha
--	--	---	--	--	--	---	---	-----------------------------	--	---	---

Map Note
Inquiries relating to this map should be directed to Weyerhaeuser, West Island Timberlands Planning Group, 3406 3rd Avenue, Port Alberni, B.C. V9Y 4E5

Disclaimer
Although we take great care in the preparation of this information and are confident that it is accurate, we do not give any warranty as to its accuracy or suitability for any purpose that it might be used for. Users assume the risk associated with the accuracy and results of the contents of this document.