

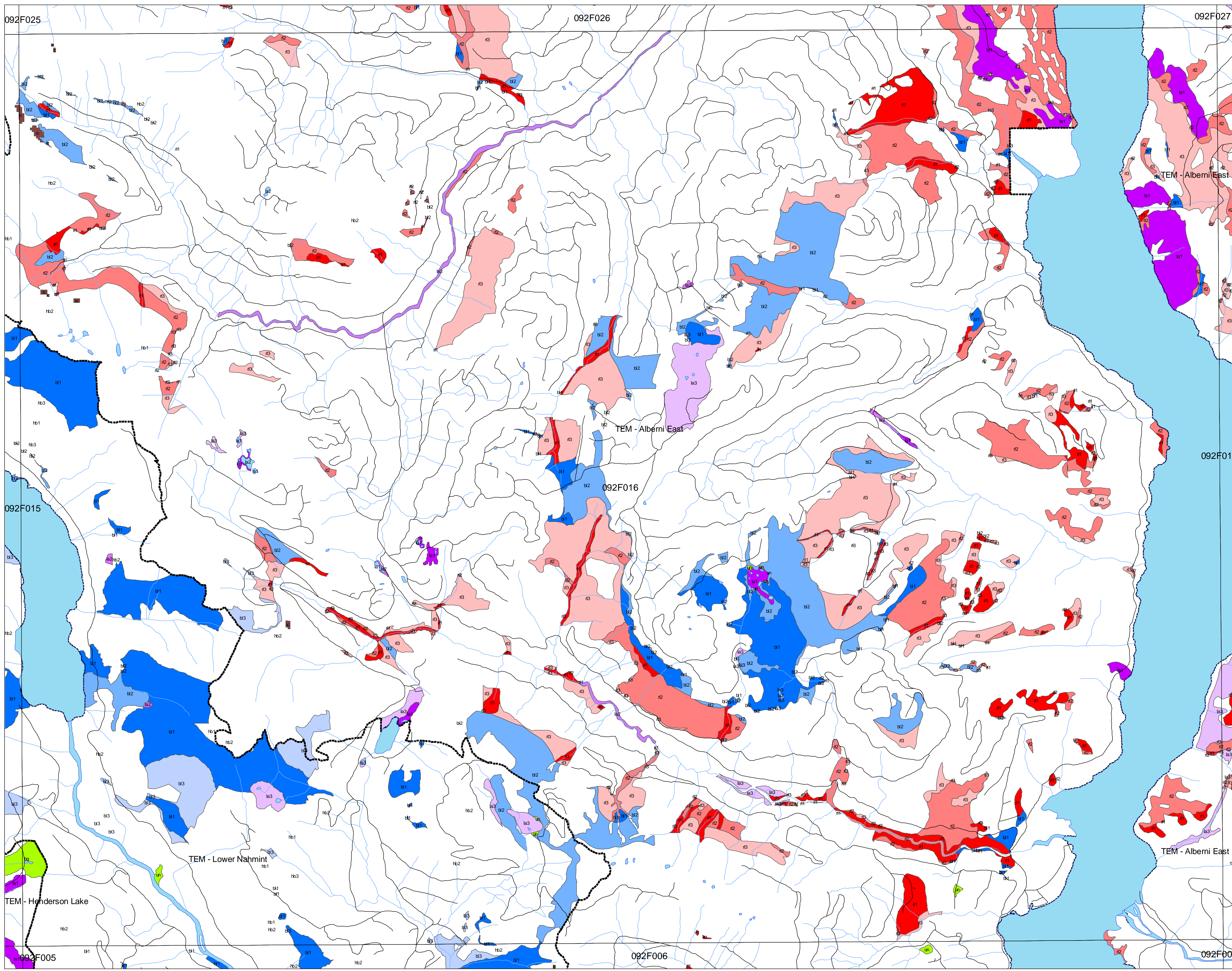
Sensitive Ecosystem Inventory

West Island Timberlands

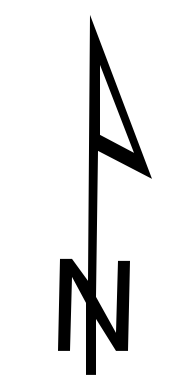
Legend

- SEI Classification**
- Red List - > 70% Area
 - Red List - 30% - 70% Area
 - Red List - < 30% Area
 - Blue List - > 70% Area
 - Blue List - 30% - 70% Area
 - Blue List - < 30% Area
 - Landscape Rarity - 0 - 10 ha
 - Landscape Rarity - 10 - 50 ha
 - Landscape Rarity - 50 - 210 ha
 - Cliffs
 - Sparsely Vegetated
 - Wetland
 - Riparian
 - Woodland

- Other Features**
- Roads
 - Streams
 - TEM Project Boundary
 - Water
 - 1:20000 Mapsheet



Plot Date: March 30, 2004



1:20,000

Cliffs Cl cc coastal cliffs ic inland cliffs	Sparsely Vegetated / Herbaceous S/HB hb* Herbaceous: a mix of grasses and forbs as well as mosses and lichens cs Coastal herbaceous: windswept shorelines and slopes influenced by proximity to the ocean sg Silt: sand and gravel deposits with low to moderate cover of grasses and herbs du Dunes: sand dunes with low cover of grasses and herbs sh Shrub: shrubs account for more than 20% of the vegetation ta Talus slopes ap Alpine hb1 > 50% RO, hb2 20% - 40% RO, hb3 10% RO	Wetland WN bg Bog fn Fen sp Swamp sw Shallow water es Estuary un Undifferentiated wetland	Riparian RI rl Streamside areas along creeks, streams, and larger floodplains fl low bench: areas flooded at least once every 2 years for part of the growing season fm medium bench: areas flooded every 1 - 6 years for short periods; usually deciduous or mixed fh high bench: areas periodically and briefly inundated by high waters; typically conifer-dominated	Woodland WD wd Dry, open stands of woodland, generally with between 10 - 25% tree cover mx Mixed conifer - deciduous	Rare Communities RC rc Rare plant communities or site series of rare occurrence within the DFA r1 Red-list, CDC r2 Blue-list, CDC r3 Class 1 Landscape rarity within the DFA (TFL44) - less than 10 ha r4 Class 2 Landscape rarity within the DFA (TFL44) - 10 to 50 ha r5 Class 3 Landscape rarity within the DFA (TFL44) - 50 to 210 ha
--	--	---	---	--	---

Weyerhaeuser
The future is growing™

Map Note
Inquiries relating to this map should be directed to Weyerhaeuser, West Island Timberlands Planning Group, 3406 3rd Avenue, Fort Albert, B.C. V9Y 4E5

Disclaimer
Although we take great care in the preparation of this information and are confident that it is accurate, we do not give any warranty as to its accuracy or suitability for any purpose that it might be used for. Users assume the risk associated with the accuracy and results of the contents of this document.