

# Sensitive Ecosystem Inventory

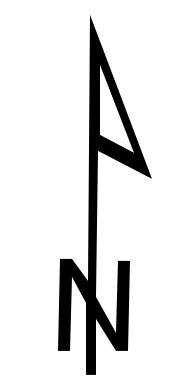
## West Island Timberlands

### Legend

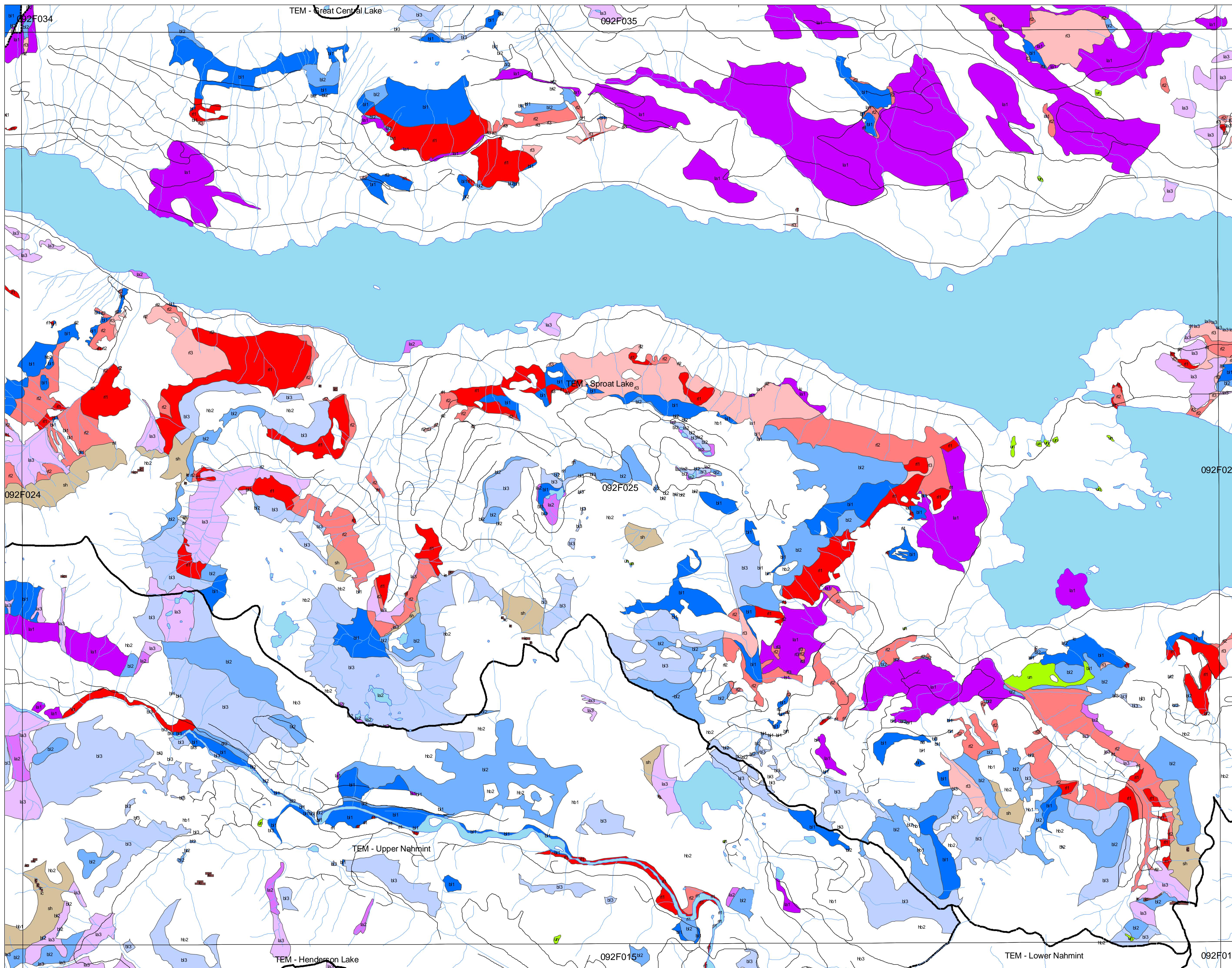
- SEI Classification**
- Red List - > 70% Area
  - Red List - 30% - 70% Area
  - Red List - < 30% Area
  - Blue List - > 70% Area
  - Blue List - 30% - 70% Area
  - Blue List - < 30% Area
  - Landscape Rarity - 0 - 10 ha
  - Landscape Rarity - 10 - 50 ha
  - Landscape Rarity - 50 - 210 ha
  - Cliffs
  - Sparsely Vegetated
  - Wetland
  - Riparian
  - Woodland

- Other Features**
- Roads
  - Streams
  - TEM Project Boundary
  - Water
  - 1:20000 Mapsheet

Plot Date: March 30, 2004



1:20,000



<b>Cliffs</b>	CL	Steep slopes, often with exposed bedrock.	<b>Sparsely Vegetated / Herbaceous</b>	SV/HB	Non-forested ecosystems with <10% tree cover. Most have shallow soils and bedrock outcrops.	<b>Wetland</b>	WN	Areas characterized by daily, seasonal or year-round water at or over the surface.	<b>Riparian</b>	RI	Streamside areas along creeks, streams, and larger floodplains.	<b>Woodland</b>	WD	Dry, open stands of woodland, generally with between 10 - 25% tree cover.	<b>Rare Communities</b>	RC	Rare plant communities or site series of rare occurrence within the DFA.
cc		coastal cliffs	hb		Herbaceous: a mix of grasses and forbs as well as mosses and lichens	bg		low bench: areas flooded at least once every 2 years for part of the growing season	mx		Mixed conifer - deciduous	r1					
ic		inland cliffs	cs		Coastal herbaceous: windwept shorelines and slopes influenced by proximity to the ocean	fn		medium bench: areas flooded every 1 - 6 years for short periods; usually deciduous or mixed	r2		Class 1 Landscape rarity within the DFA (TFL44) - less than 10 ha	un					
			sg		Silt: sand and gravel deposits with low to moderate cover of grasses and herbs	sp		high bench: areas periodically and briefly inundated by high waters; typically conifer-dominated	r3		Class 2 Landscape rarity within the DFA (TFL44) - 10 to 50 ha						
			du		Dunes: sand dunes with low cover of grasses and herbs	sw					Class 3 Landscape rarity within the DFA (TFL44) - 50 to 210 ha						
			sh		Shrub: shrubs account for more than 20% of the vegetation	es											
			ta		Talus slopes	un											
			ap		Alpine												
					hb1 > 50% RO, hb2 20% - 40% RO, hb3 10% RO												

**Map Note**  
Inquiries relating to this map should be directed to Weyerhaeuser, West Island Timberlands Planning Group, 3406 3rd Avenue, Fort Albert, B.C. V9Y 4E5

**Disclaimer**  
Although we take great care in the preparation of this information and are confident that it is accurate, we do not give any warranty as to its accuracy or suitability for any purpose that it might be used for. Users assume the risk associated with the accuracy and results of the contents of this document.