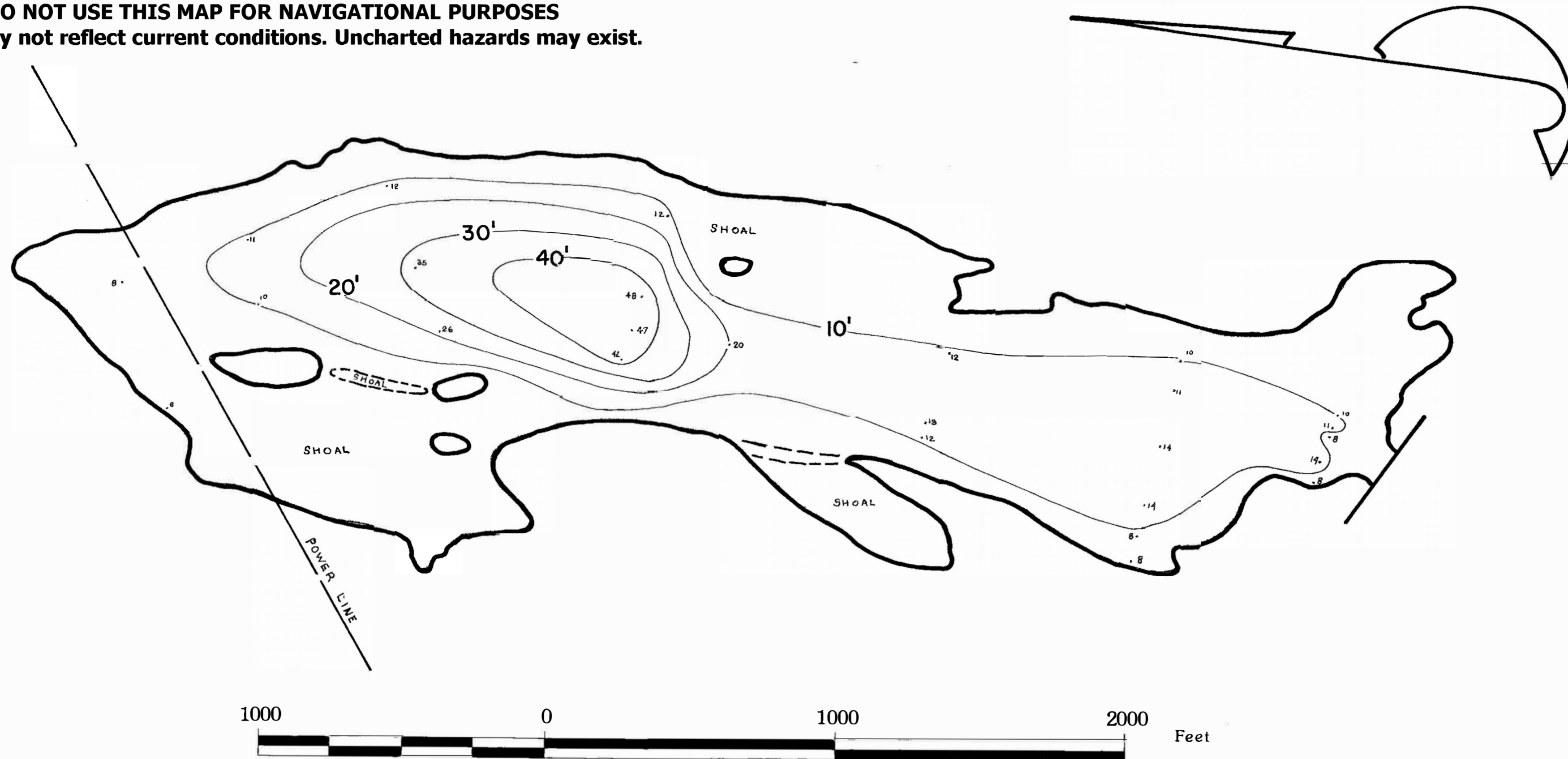


Disclaimer: The Minister and the Crown provides this data without warranty or representation as to any matter including but not limited to whether the data is correct, accurate, or free from error, defect danger, or hazard and whether it is otherwise useful or suitable for any use the user may make of it.

All boundaries and place names are shown for general orientation and reference only.

WARNING: These data are not to be used for navigation. Although these data are of high quality and may be useful for planning and modeling purposes, they are not suitable for navigational purposes as they may not reflect current conditions and uncharted hazards may exist

CAUTION: DO NOT USE THIS MAP FOR NAVIGATIONAL PURPOSES
This map may not reflect current conditions. Uncharted hazards may exist.



NOTE:  DENOTES BENCH MARK

SHORE OUTLINE FROM: AIR PHOTO DATE: AUG 28, 1970

STATISTICS AT TIME OF SURVEY

- | | |
|----------------------------|----------------------|
| 1. ELEVATION | 1350' |
| 2. SURFACE AREA | 98.3 Acres |
| 3. VOLUME | 1117 Ac. FT. |
| 4. EST. ANNUAL FLUCTUATION | |
| 5. MEAN DEPTH | 11.6' |
| 6. MAX. DEPTH | 48' |
| 7. PERIMETER | 13,410' ± Del. 1,950 |

FISH AND WILDLIFE BRANCH
DEPARTMENT OF RECREATION AND CONSERVATION

LACY LAKE

DATE: Jan. 1972

SCALE: 1" = 300'

DWG. No. 92-F-7e