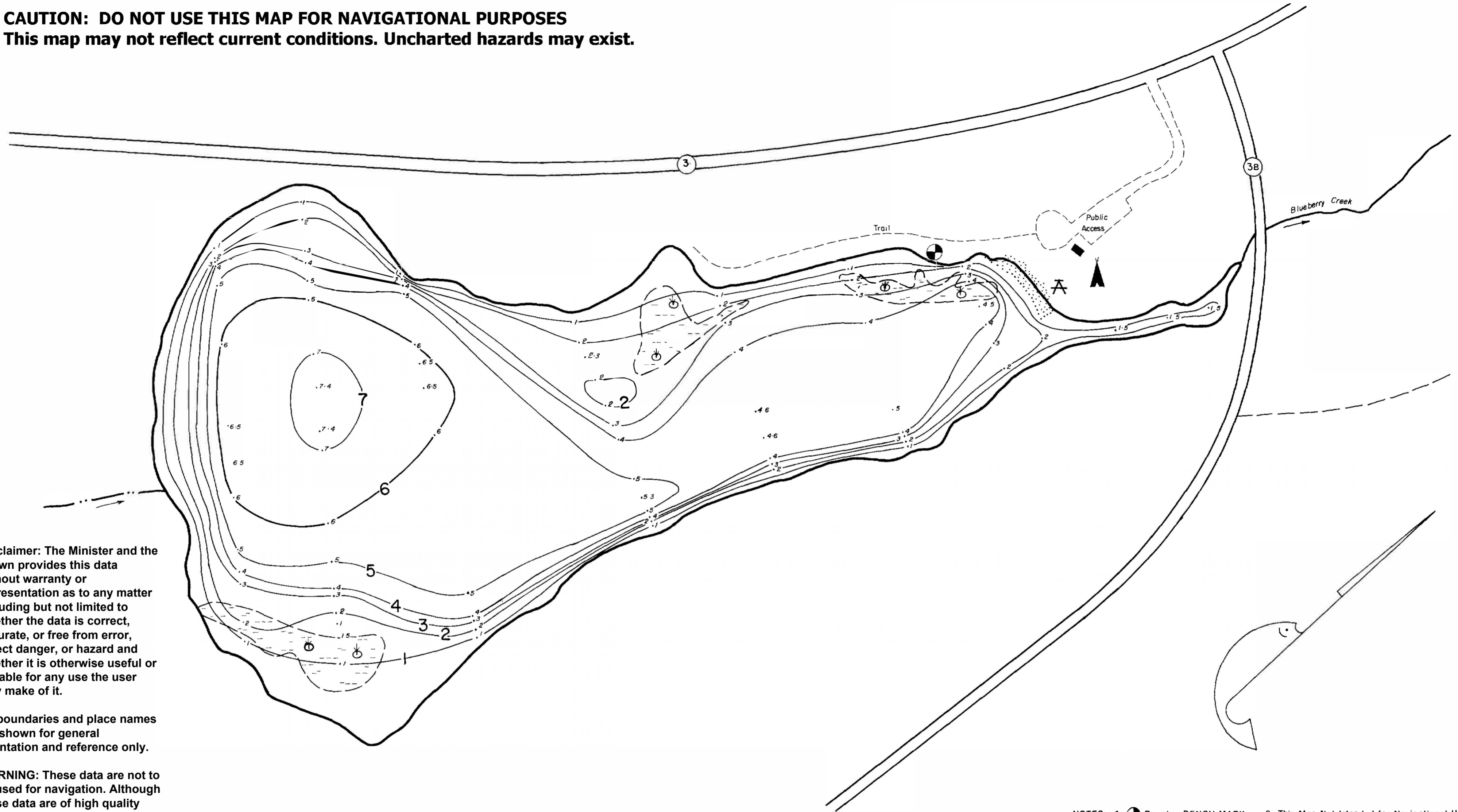


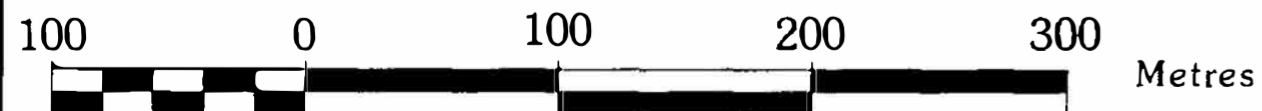
CAUTION: DO NOT USE THIS MAP FOR NAVIGATIONAL PURPOSES
This map may not reflect current conditions. Uncharted hazards may exist.



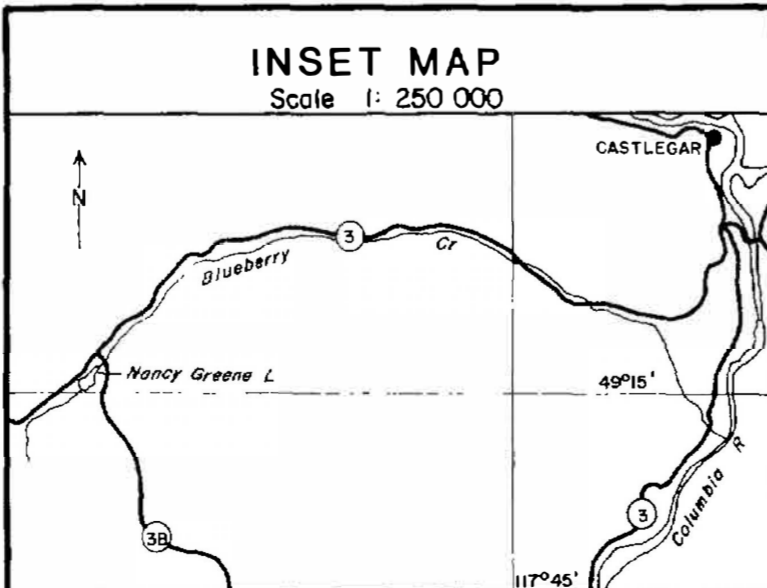
Disclaimer: The Minister and the Crown provides this data without warranty or representation as to any matter including but not limited to whether the data is correct, accurate, or free from error, defect danger, or hazard and whether it is otherwise useful or suitable for any use the user may make of it.

All boundaries and place names are shown for general orientation and reference only.

WARNING: These data are not to be used for navigation. Although these data are of high quality and may be useful for planning and modeling purposes, they are not suitable for navigational purposes as they may not reflect current conditions and uncharted hazards may exist.



NOTES: 1 Denotes BENCH MARK 2 This Map Not Intended for Navigational Use. Uncharted Rocks and Shoals May Exist.



DATE: JUNE 18, 1987
 OUTLINE SOURCE: AIRPHOTO BC 83027:177 (AUGUST 1983)

STATISTICS AT TIME OF SURVEY	
ELEVATION	1 265 m. ±
SURFACE AREA	317 000 sq. m.
AREA ABOVE 6m. CONTOUR	270 000 sq. m.
VOLUME	1 210 000 cu. m.
MEAN DEPTH	3.8 m.
MAX. DEPTH	7.4 m.
PERIMETER, MAIN SHORE	3 100 m.
PERIMETER, ISLANDS	— m.
BENCH MARK HEIGHT ABOVE WATER LEVEL	2.0 m.

Province of British Columbia
 Ministry of Environment

FISHERIES BRANCH
 INVENTORY OPERATIONS

NANCY GREENE LAKE

DEPTHS IN METERS

WATERSHED CODE: 30-1300	U.T.M. CO-ORDINATE: 11-4313-54559
MLL 4-9	REV. DATE:
DRAFT DATE: DEC 2, 1988	SCALE: 1:3000
	NT.S. NO. 82 F/5