

Disclaimer: The Minister and the Crown provides this data without warranty or representation as to any matter including but not limited to whether the data is correct, accurate, or free from error, defect danger, or hazard and whether it is otherwise useful or suitable for any use the user may make of it.

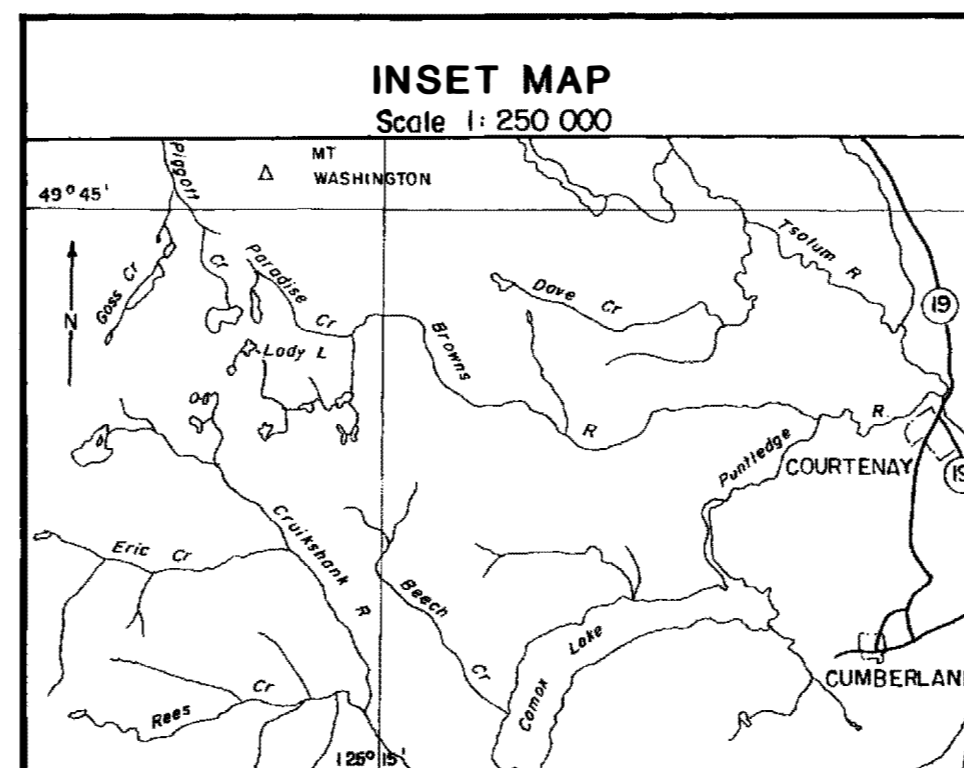
All boundaries and place names are shown for general orientation and reference only.

WARNING: These data are not to be used for navigation. Although these data are of high quality and may be useful for planning and modeling purposes, they are not suitable for navigational purposes as they may not reflect current conditions and uncharted hazards may exist.

NOTES: 1 Denotes BENCH MARK 2 This Map Not Intended For Navigational Use. Uncharted Rocks And Shoals May Exist.



CAUTION: DO NOT USE THIS MAP FOR NAVIGATIONAL PURPOSES
This map may not reflect current conditions. Uncharted hazards may exist.



DATE: AUGUST 26, 1987
OUTLINE SOURCE: AIR PHOTO BC81070: 155 (JULY, 1981)

STATISTICS AT TIME OF SURVEY

ELEVATION	1 195 m. ±
SURFACE AREA	131 600 sq.m.
AREA ABOVE 6m. CONTOUR	97 100 sq.m.
VOLUME	538 600 cu.m.
MEAN DEPTH	4.1 m.
MAX. DEPTH	10.5 m.
PERIMETER, MAIN SHORE	2 300 m.
PERIMETER, ISLANDS	— m.
BENCH MARK HEIGHT ABOVE WATER LEVEL	2.0 m.



Province of British Columbia
Ministry of Environment

FISHERIES BRANCH
INVENTORY OPERATIONS

LADY LAKE

DEPTHS IN METRES

WATERSHED CODE: 92-2800-030		U.T.M. CO-ORDINATE: 10-3333-55087	
M.U. 1-6		REV. DATE:	
		SCALE: 1:1500	
		DRAFT DATE: FEB. 11, 1987	
		N.T.S. NO: 92F/11	